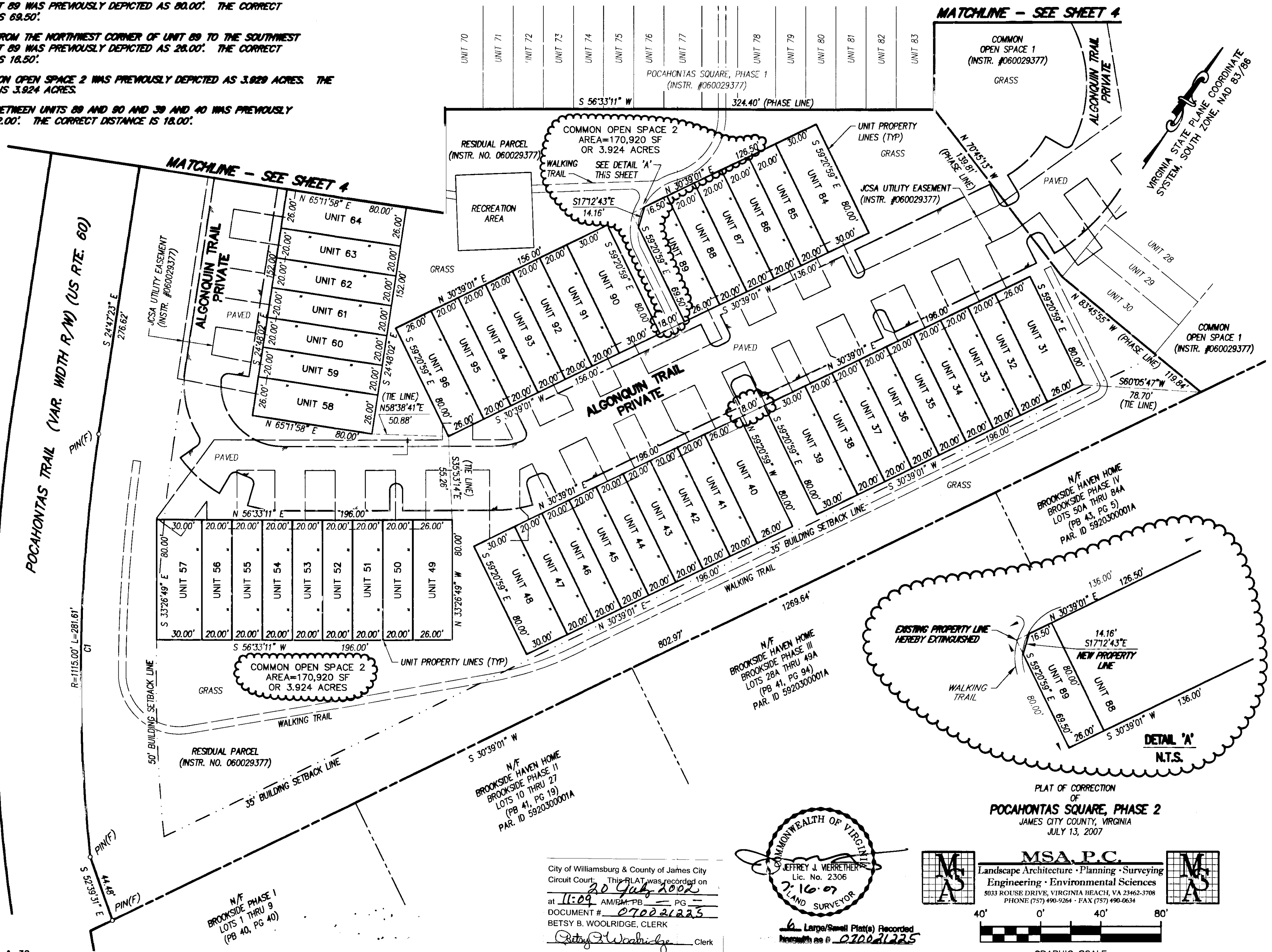


REVISION NOTES:

1. THE DISTANCE FROM THE SOUTHEAST CORNER OF UNIT 89 TO THE SOUTHWEST CORNER OF UNIT 89 WAS PREVIOUSLY DEPICTED AS 80.00'. THE CORRECT MEASUREMENT IS 69.50'.
2. THE DISTANCE FROM THE NORTHWEST CORNER OF UNIT 89 TO THE SOUTHWEST CORNER OF UNIT 89 WAS PREVIOUSLY DEPICTED AS 28.00'. THE CORRECT MEASUREMENT IS 18.50'.
3. AREA OF COMMON OPEN SPACE 2 WAS PREVIOUSLY DEPICTED AS 3.929 ACRES. THE CORRECT AREA IS 3.924 ACRES.
4. THE DISTANCE BETWEEN UNITS 89 AND 90 AND 39 AND 40 WAS PREVIOUSLY DEPICTED AS 22.00'. THE CORRECT DISTANCE IS 18.00'.

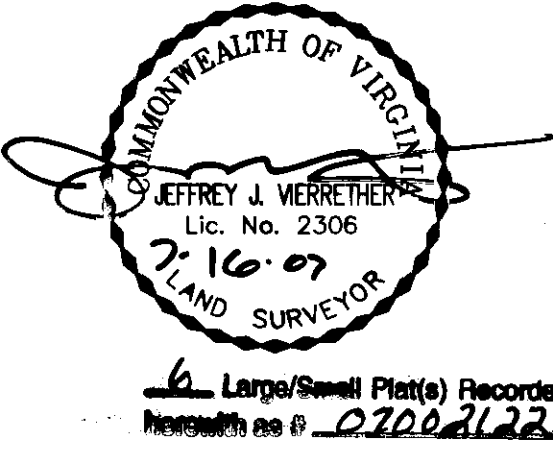
070021225



FB: CS 323, PG 25 & 32
 DRWN. BY CJS
 CHK'D. BY JJV DATE 07/13/07

SEE SHEET 1 OF 6 FOR NOTES AND CERTIFICATES
 SEE SHEETS 5 & 6 OF 6 FOR WATERWORKS EASEMENT (CITY OF NEWPORT NEWS)

City of Williamsburg & County of James City
 Circuit Court. This PLAT was recorded on
 20 July 2002
 at 11:09 AM/PM PB PG
 DOCUMENT # 070021225
 BETSY B. WOOLRIDGE, CLERK
 Betsy Woolridge Clerk



MSA, P.C.
 Landscape Architecture • Planning • Surveying
 Engineering • Environmental Sciences
 5033 ROUSE DRIVE, VIRGINIA BEACH, VA 23462-3708
 PHONE (757) 490-9264 • FAX (757) 490-0634

GRAPHIC SCALE
 1" = 40'

PLAT OF CORRECTION
 OF
POCAHONTAS SQUARE, PHASE 2
 JAMES CITY COUNTY, VIRGINIA
 JULY 13, 2007

JOB# 03066A
 SHEET 3 OF 6