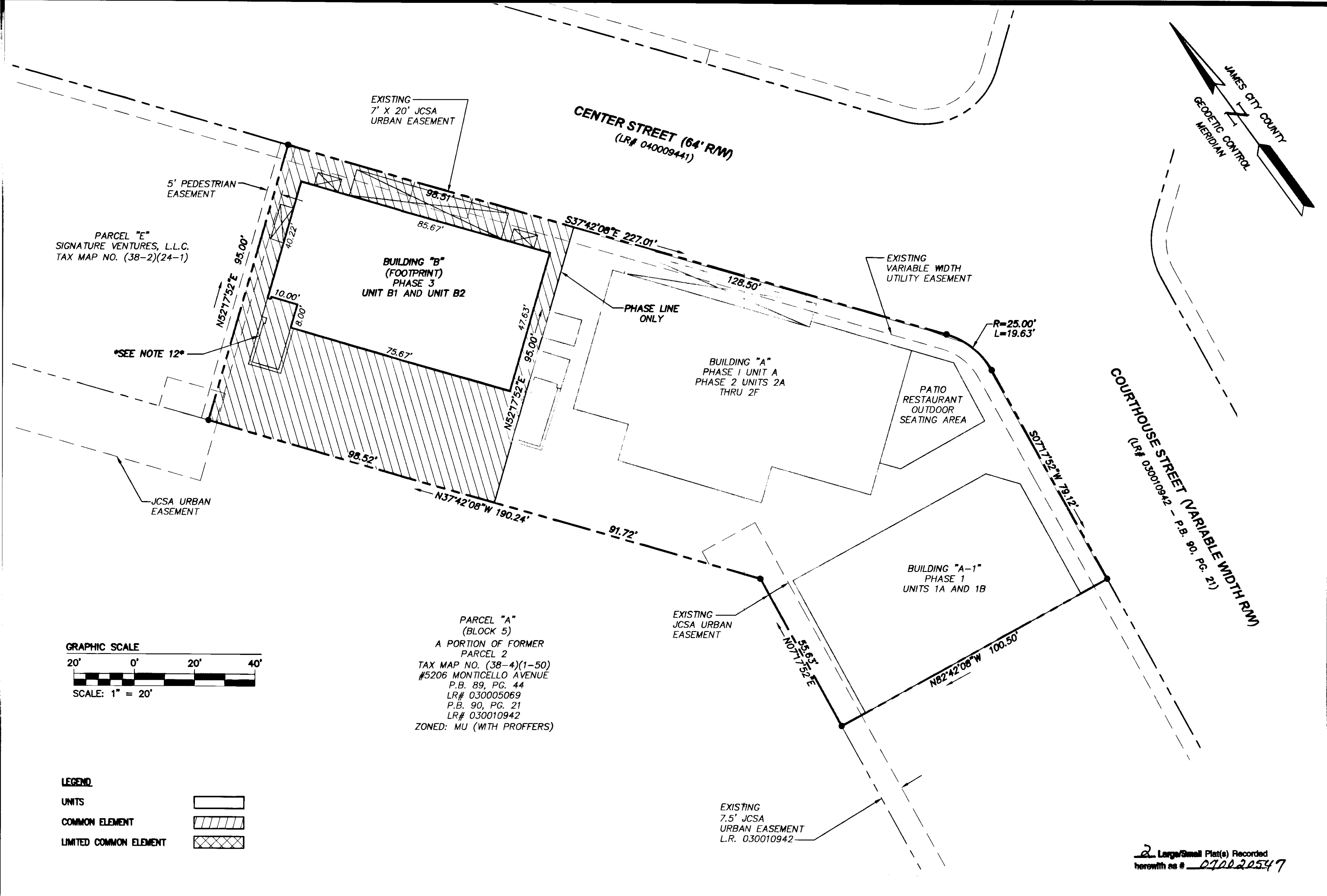
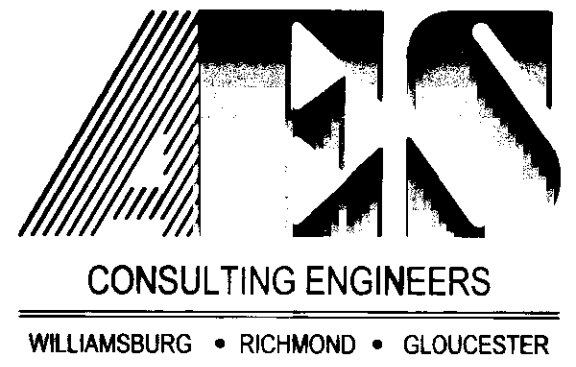


S:\Jobs\6632\E10-3 Bldg 5 Mixed Use Bldgs\dwg\Plats\CONDOMINIUM\Phase 3-Bldg B\6632E103CONDO PH3-Bld B p02.dwg, 6/1/2007 9:23:17 AM, mike apperson

070020547

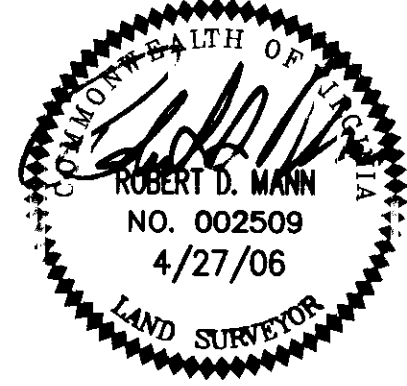


2 Large/Small Plat(s) Recorded herewith as # 070020547



5248 Olde Towne Road, Suite 1
Williamsburg, Virginia 23188
(757) 253-0040
Fax (757) 220-8994

EXHIBIT B
CORRECTED PLAT OF CONDOMINIUM
NEW TOWN CENTER STREET CONDOMINIUMS
PHASE 3
BUILDING "B"
UNIT B1 AND UNIT B2
BERKELEY DISTRICT JAMES CITY COUNTY VIRGINIA



City of Williamsburg & County of James City	
Circuit Court: This PLAT was recorded on	
at 11:24 AM/PM PG 13 July 2007	
DOCUMENT # 070020547	
BETSY B. WOOLRIDGE, CLERK	
Clerk	
1	5/30/07
CORRECTED TO INCLUDE UNIT B2	
No.	DATE
REVISION / COMMENT / NOTE	
	BY

Designed	Drawn
AES	JFS
Scale	Date
1"=20'	4/27/06
Project No.	
6632-E-10-3	
Drawing No.	
2 OF 2	