



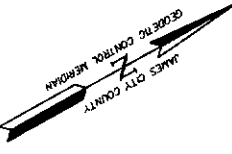
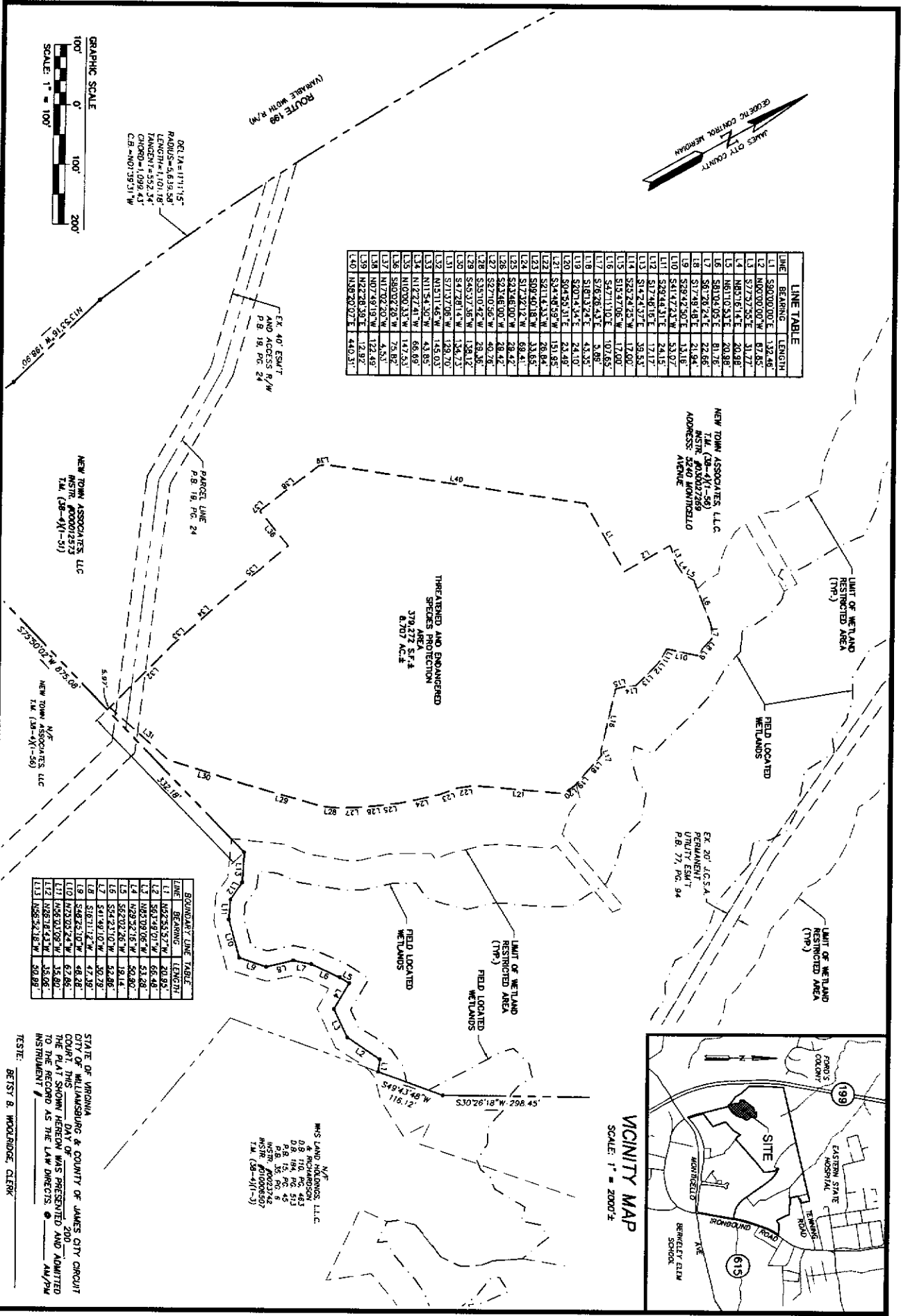
5248 Old Towne Road, Suite 1  
Williamsburg, Virginia 23188  
(757) 253-0040  
Fax (757) 220-9994

"EXHIBIT A"  
PLAT SHOWING THREATENED AND  
ENDANGERED SPECIES PROTECTION AREA  
PREPARED FOR NEW TOWN ASSOCIATES, LLC  
NEW TOWN SECTION 7 & 8  
BERKELEY DISTRICT, JAMES CITY COUNTY, VIRGINIA



No.	DATE	REVISION / COMMENT / NOTE

Designed AES	Drawn AWT
Scale 1"=100'	Date 3/26/07
Project No. 6632-E-16	Drawn No.



LINE	BEARING	LENGTH
L1	S80°00'00"E	132.48
L2	S00°00'00"W	67.65
L3	S73°29'51"E	30.72
L4	N81°01'41"E	60.88
L5	N80°04'32"E	60.88
L6	S80°04'32"E	20.68
L7	S80°26'24"E	20.68
L8	S17°48'48"E	22.88
L9	S78°42'50"E	13.16
L10	S41°47'22"E	53.07
L11	S28°44'31"E	24.15
L12	S17°48'16"E	17.17
L13	S14°24'37"E	39.53
L14	S25°24'25"W	17.00
L15	S15°47'06"W	17.00
L16	S42°11'16"E	107.65
L17	S76°26'43"E	9.89
L18	S18°13'24"E	43.35
L19	S20°14'44"E	24.10
L20	S04°55'31"E	23.48
L21	S34°46'59"W	151.85
L22	S21°13'33"W	26.84
L23	S09°40'18"W	33.65
L24	S17°32'12"W	69.41
L25	S32°46'00"W	28.47
L26	S32°46'00"W	28.47
L27	S27°10'56"W	40.78
L28	S35°10'42"W	29.35
L29	S45°37'58"W	138.12
L30	S17°28'18"W	148.12
L31	S17°28'18"W	148.12
L32	N01°11'48"W	148.02
L33	N11°54'30"W	43.89
L34	N12°22'41"W	66.69
L35	N10°00'13"W	147.53
L36	S80°02'26"W	75.82
L37	N17°02'20"W	4.53
L38	N07°49'19"W	122.48
L39	N22°28'39"E	12.97
L40	N38°20'07"E	440.31

LINE	BEARING	LENGTH
L1	N62°55'57"W	20.93
L2	S67°49'01"W	66.48
L3	N83°09'06"W	53.28
L4	N69°52'16"W	50.90
L5	S62°02'26"W	18.14
L6	S54°21'10"W	52.86
L7	S11°49'10"W	92.78
L8	S10°11'12"W	47.38
L9	S48°23'10"W	88.28
L10	S23°03'42"W	62.88
L11	N82°34'02"W	32.88
L12	N82°34'02"W	32.88
L13	N82°34'18"W	50.88

STATE OF VIRGINIA  
CITY OF WILLIAMSBURG & COUNTY OF JAMES CITY CIRCUIT  
THE PLAT SHOWN HEREON WAS PREPARED AND ADMITTED  
TO THE RECORD AS THE LAW DIRECTS.  
TESTE: BETSY B. WOODRIDGE, CLERK

N/E  
M/S LAND HOLDINGS, LLC  
& RICHARDSON  
D.B. 100 PG. 613  
P.B. 15, PG. 45  
P.B. 15, PG. 8  
NSTR. #010006307  
T.M. (#8-41-1-3)

