

# 070017891

PLAT OF SUBDIVISION

# LANDFALL VILLAGE

(PART OF THE LANDFALL AT JAMESTOWN DEVELOPMENT)

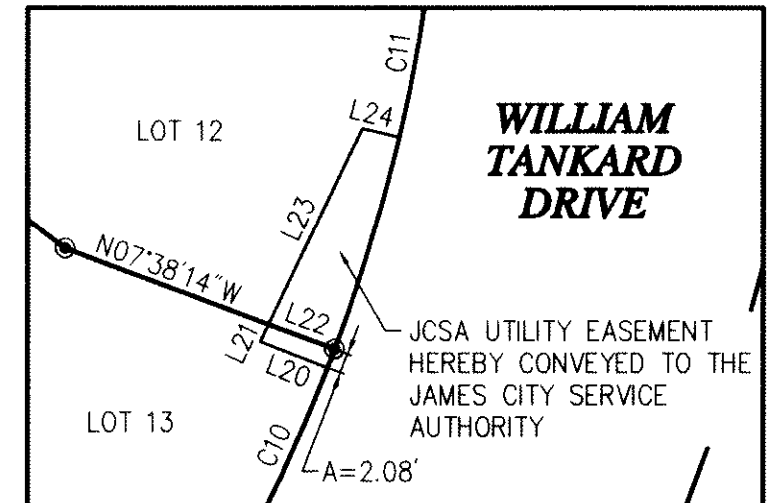
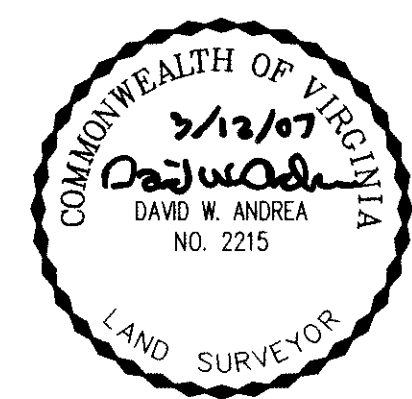
JAMESTOWN MAGISTERIAL DISTRICT  
JAMES CITY COUNTY, VIRGINIA

DATE: 09/15/06    SHEET 4 OF 4    SCALE: 1"=40'

PROJECT NO: 31825.01    DRAWN BY: DWP

**VHB** Vanasse Hangen Brustlin, Inc.  
Transportation Land Development Environmental Services  
11832 Rock Landing Drive, Suite 207  
Newport News, Virginia 23606-4231  
(757) 873-3386 • FAX (757) 873-0757

REVISED: 3/12/07

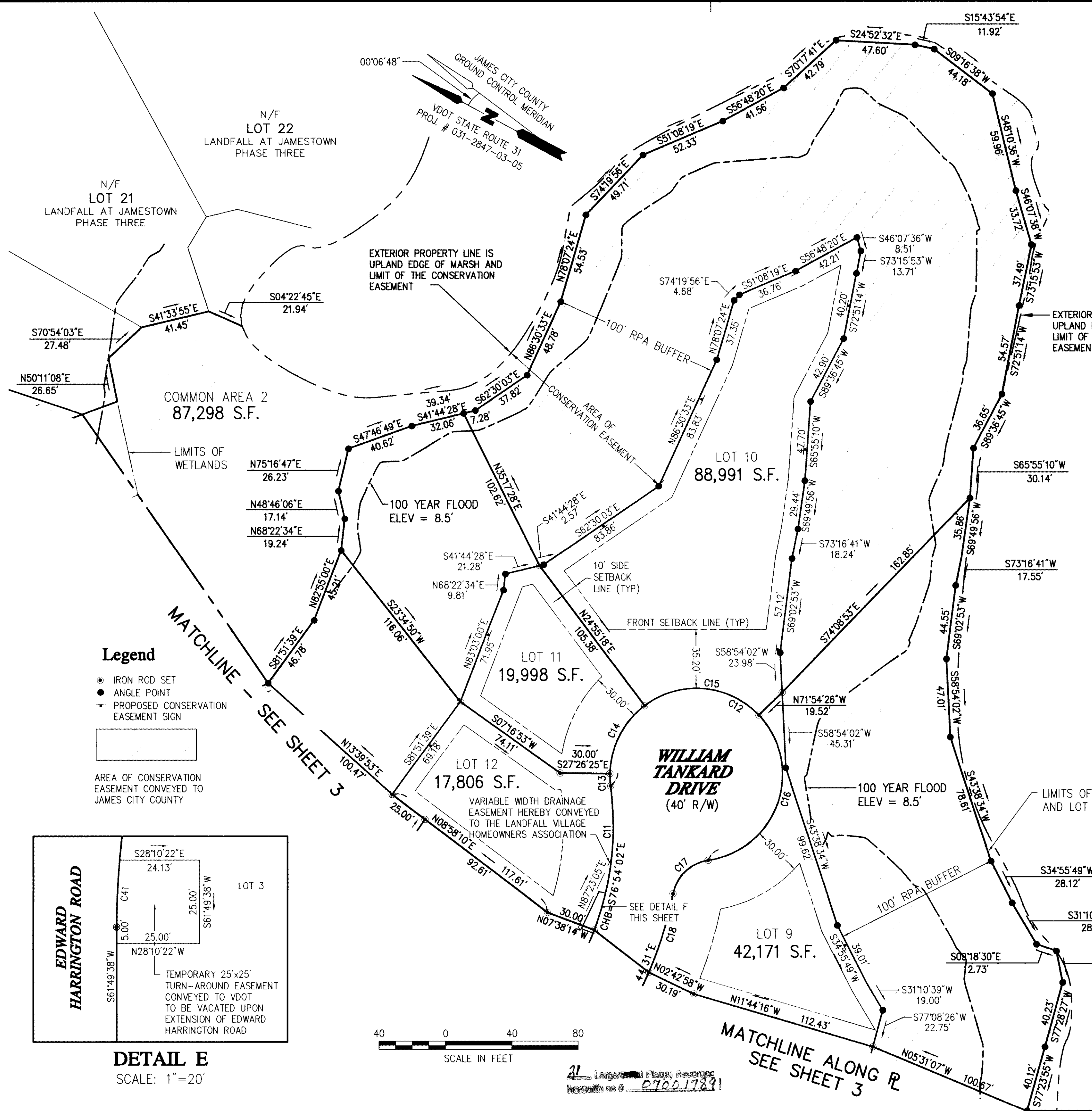


**DETAIL F**  
SCALE: 1"=20'

City of Williamsburg & County of James City  
Circuit Court. This PLAT was recorded on  
21 June 2007  
at 12:56 PM, PG     
DOCUMENT # 070017891  
BETSY B. WOOLRIDGE, CLERK  
*Betsy B. Woolridge* Clerk

N/F  
JAMESTOWN YACHT BASIN, LLD  
INSTRUMENT #010013768  
ZONE B1

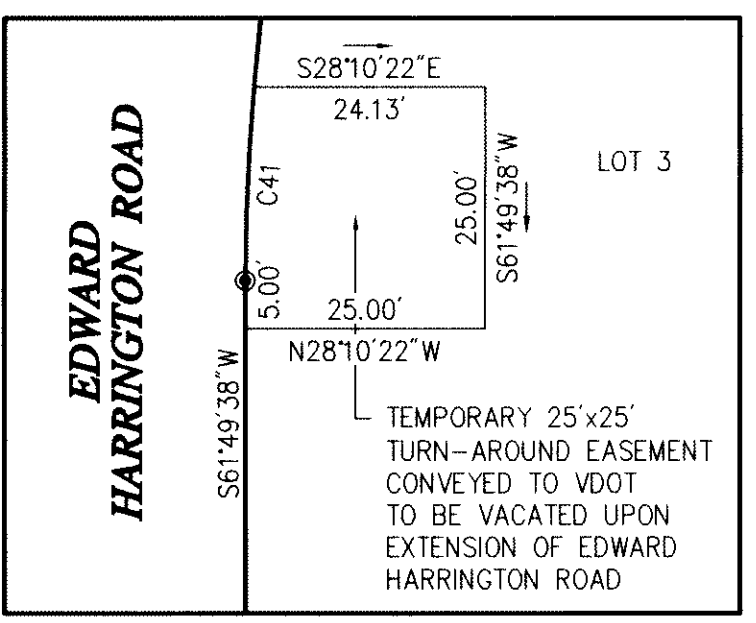
LINE TABLE		
LINE	LENGTH	BEARING
L20	7.49'	N06°58'36"W
L21	2.00'	N87°23'05"E
L22	7.32'	N07°38'14"W
L23	22.61'	N87°23'05"E
L24	3.90'	S14°59'11"E



**Legend**

- IRON ROD SET
- ANGLE POINT
- PROPOSED CONSERVATION EASEMENT SIGN

AREA OF CONSERVATION EASEMENT CONVEYED TO JAMES CITY COUNTY



**DETAIL E**  
SCALE: 1"=20'



21  
# 070017891