

#070017891

PLAT OF SUBDIVISION  
**LANDFALL VILLAGE**  
 (PART OF THE LANDFALL AT JAMESTOWN DEVELOPMENT)  
 JAMESTOWN MAGISTERIAL DISTRICT  
 JAMES CITY COUNTY, VIRGINIA

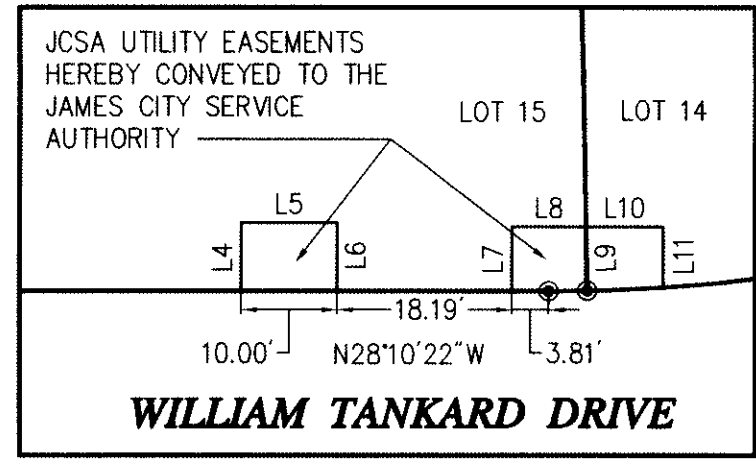
DATE: 09/15/06 SHEET 3 OF 4 SCALE: 1"=40'  
 PROJECT NO: 31825.01 DRAWN BY: DWP

**VHB** Vanasse Hangen Brustlin, Inc.  
 Transportation Land Development Environmental Services  
 11832 Rock Landing Drive, Suite 207  
 Newport News, Virginia 23606-4231  
 (757) 873-3386 • FAX (757) 873-0757

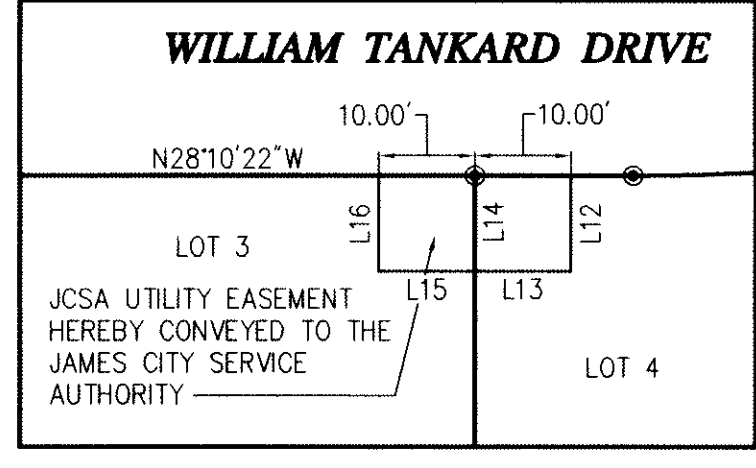
REVISED: 3/12/07



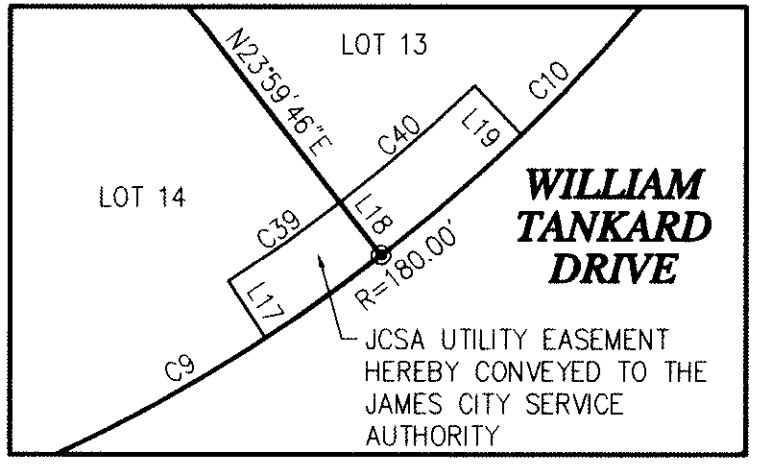
LINE	LENGTH	BEARING
L1	44.47'	S40°36'59"E
L2	49.13'	S56°09'45"E
L3	53.79'	S73°17'24"E
L4	7.06'	N61°49'38"E
L5	10.00'	S28°10'22"E
L6	7.06'	S61°49'38"W
L7	6.65'	N61°49'38"E
L8	7.72'	S28°10'22"E
L9	6.60'	N60°32'13"E
L10	8.09'	S28°10'22"E
L11	6.25'	S61°49'38"W
L12	10.00'	S61°49'38"W
L13	10.00'	N28°10'22"W
L14	10.00'	S61°49'38"W
L15	10.00'	N28°10'22"W
L16	10.00'	N61°49'38"E
L17	7.00'	N28°42'45"E
L18	7.00'	N23°59'46"E
L19	7.00'	S17°51'21"W



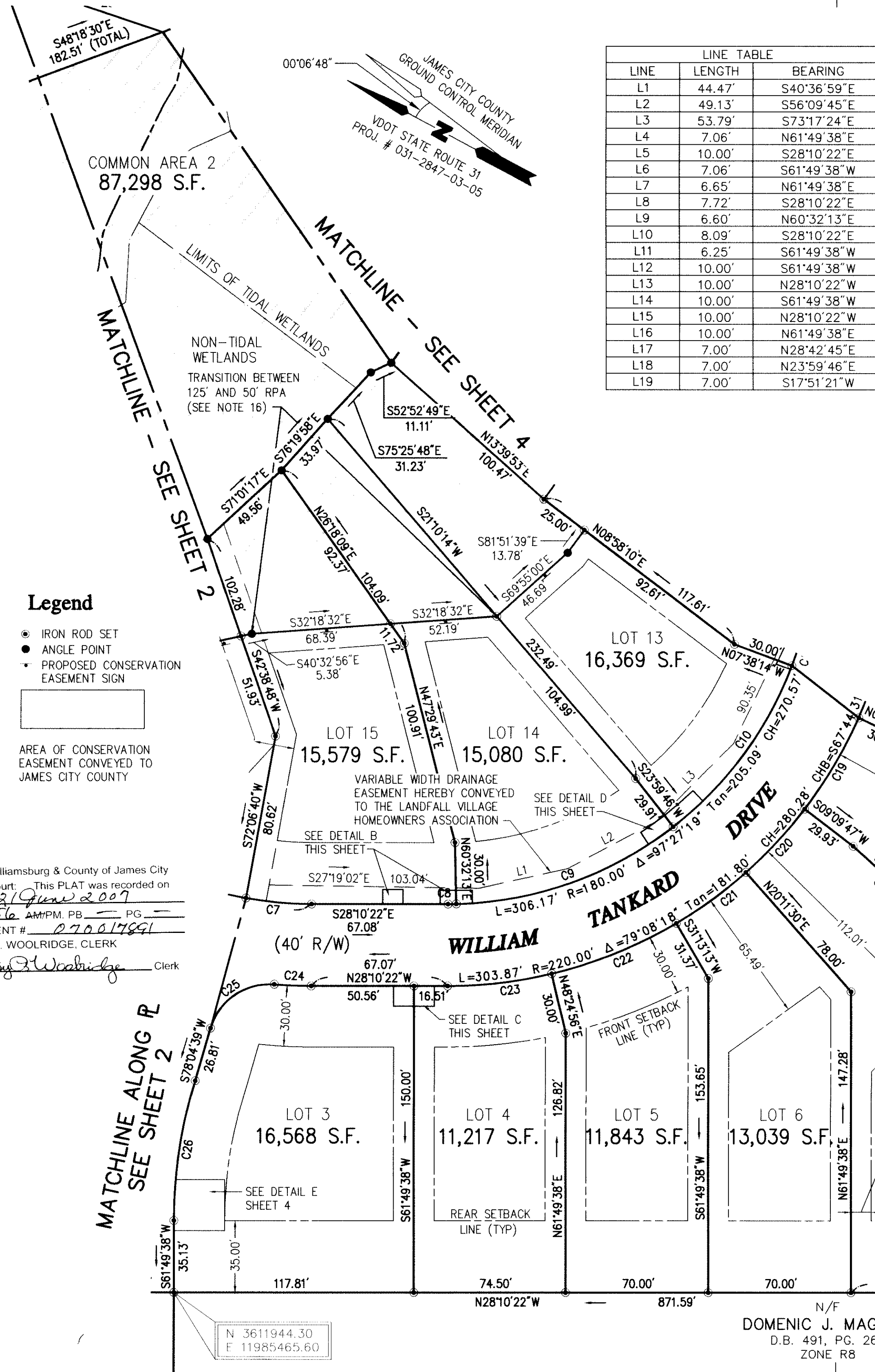
**DETAIL B**  
 SCALE: 1"=20'



**DETAIL C**  
 SCALE: 1"=20'



**DETAIL D**  
 SCALE: 1"=20'



**Legend**

- IRON ROD SET
- ANGLE POINT
- PROPOSED CONSERVATION EASEMENT SIGN
- AREA OF CONSERVATION EASEMENT CONVEYED TO JAMES CITY COUNTY

City of Williamsburg & County of James City Circuit Court: This PLAT was recorded on 2/9/07 at 12:56 AM/PM. PG. DOCUMENT # 070017891 BETSY B. WOOLRIDGE, CLERK

N 3611944.30  
 F 11985465.60

N/F DOMENIC J. MAGLIERI  
 D.B. 491, PG. 269  
 ZONE R8

4 Large/Small Plans Recorded  
 Instrument # 070017891