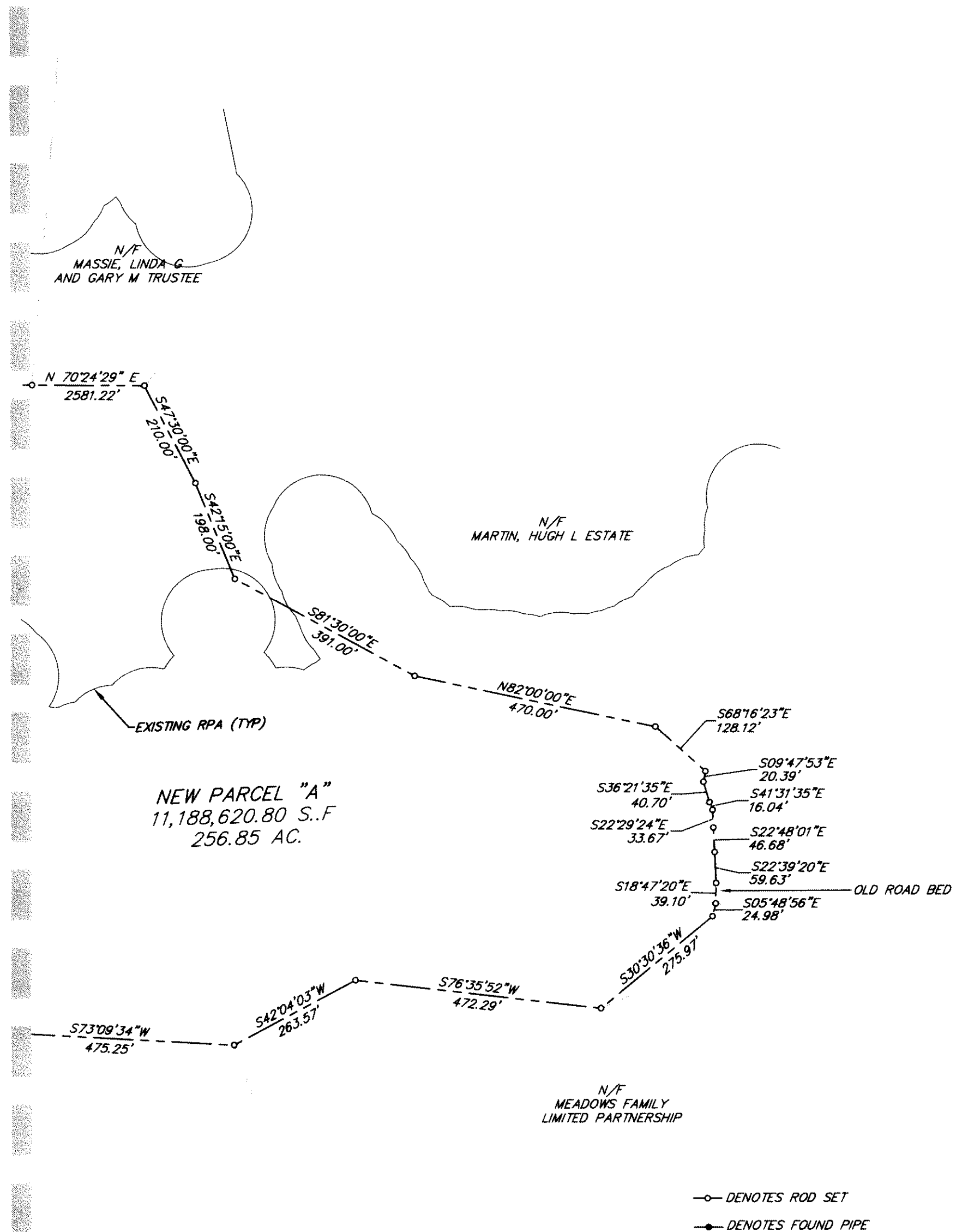
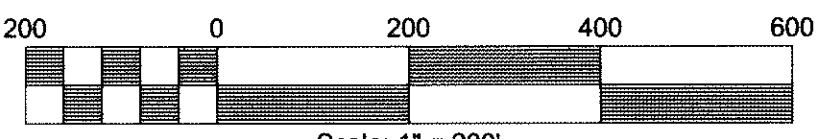


#070015684

MATCHLINE SHEET 3 OF 5

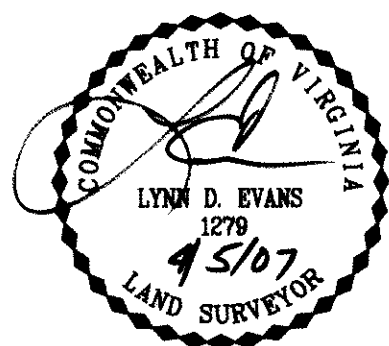


○ DENOTES ROD SET
 ● DENOTES FOUND PIPE



Scale: 1" = 200'
 SHEET 4 OF 5

5 Large/Small Plat(s) Recorded
 herewith as # 070015684



Bury+Partners
 ENGINEERING SOLUTIONS
 4095 Ironbound Road, Suite 200
 Williamsburg, Virginia 23188
 Tel. (757) 229-1776 Fax (757) 229-4663
 Bury+Partners, Inc. ©Copyright 2006

BOUNDARY LINE ADJUSTMENT
 OF
 LOT 20
 MERRY OAKS, SECTION ONE
 AND THE PROPERTY OF
 MC REAL ESTATE HOLDINGS, LLC

STONEHOUSE DISTRICT
 JAMES CITY COUNTY, VIRGINIA
 JANUARY 9, 2007, SHEET 4 OF 5

City of Williamsburg & County of James City
 Circuit Court: This PLAT was recorded on
 at 11:50 AM on 4 June 07 PG. 1
 DOCUMENT # 070015684
 BETSY B. WOOLRIDGE, CLERK
 Betsy B. Woolridge Clerk

REVISED: APRIL 5, 2007 REVISION DATE: MARCH 15, 2007