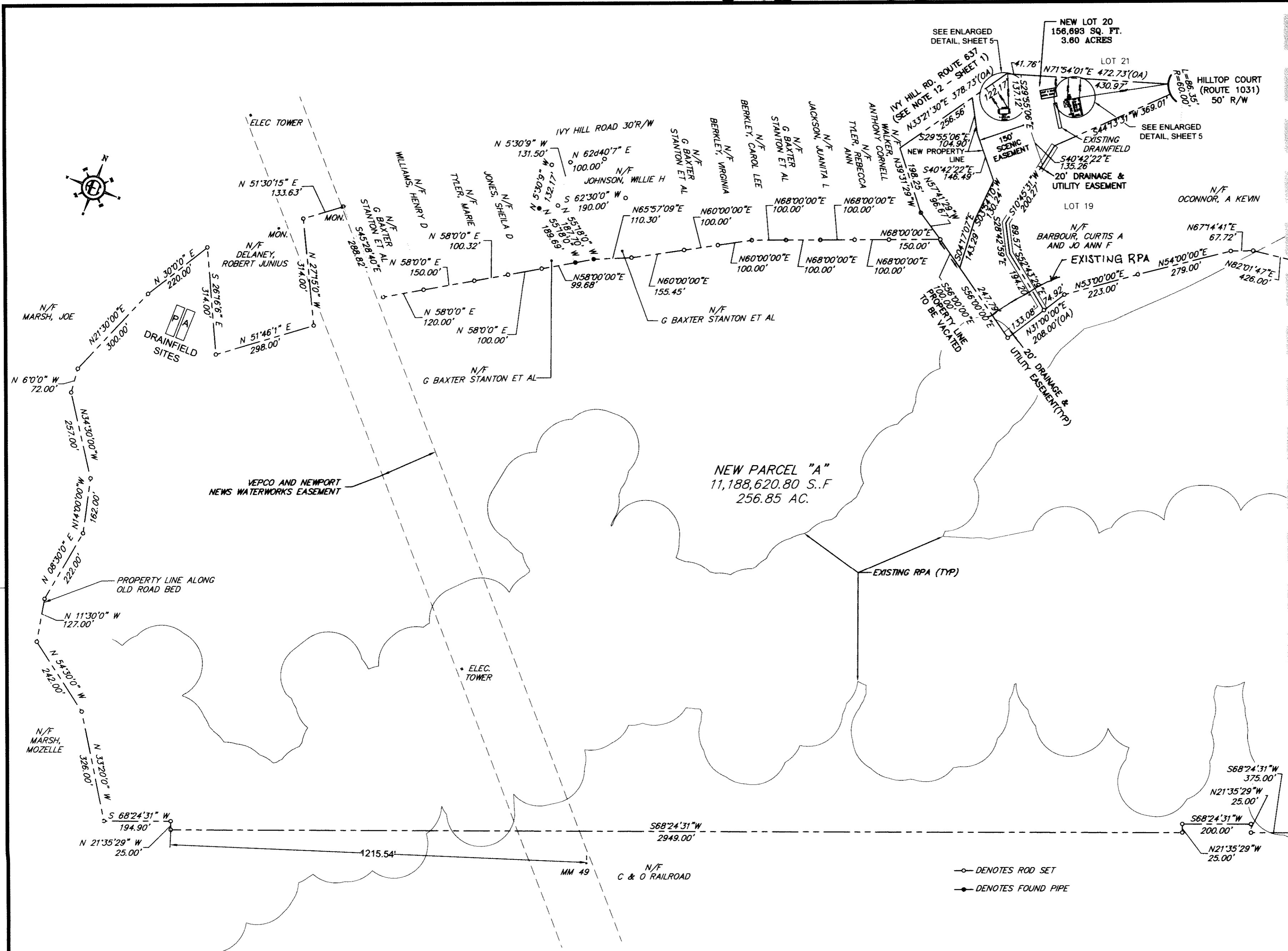
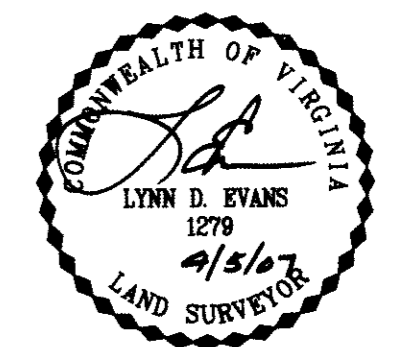


#070015684

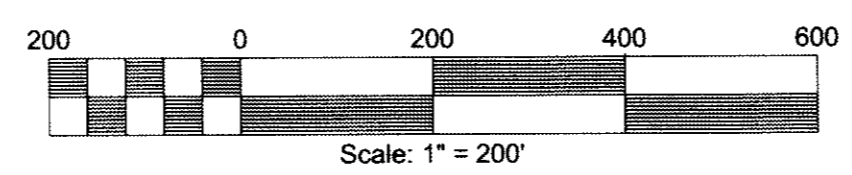


MATCHLINE SHEET 3 OF 5



Bury+Partners
ENGINEERING SOLUTIONS
4095 Ironbound Road, Suite 200
Williamsburg, Virginia 23188
Tel. (757) 229-1776 Fax (757) 229-4683
Bury+Partners, Inc. ©Copyright 2006

SUBDIVISION PARCEL ACREAGE
BEFORE:
LOT 20: 229,185 SQ. FT. OR 5.26 ACRES
NEW PARCEL "A": 11,116,219.8 SQ. FT. OR 255.19 ACRES
AFTER:
LOT 20: 156,693 SQ. FT. OR 3.60 ACRES
NEW PARCEL "A": 11,188,620.8 SQ. FT. OR 256.85 ACRES



5 Large/Small Plat(s) Recorded
herein as 070015684

SHEET 2 OF 5

City of Williamsburg & County of James City
Circuit Court This PLAT was recorded on
4 June 07
at 11:50 AM/PM. PB PG
DOCUMENT # 070015684
BETSY B. WOOLRIDGE, CLERK
Clerk

**BOUNDARY LINE ADJUSTMENT
OF
LOT 20
MERRY OAKS, SECTION ONE
AND THE PROPERTY OF
MC REAL ESTATE HOLDINGS, LLC**
**STONEHOUSE DISTRICT
JAMES CITY COUNTY, VIRGINIA**
REVISOR: MAY 2, 2007
REVISOR: APRIL 5, 2007
REVISION DATE: MARCH 15, 2007