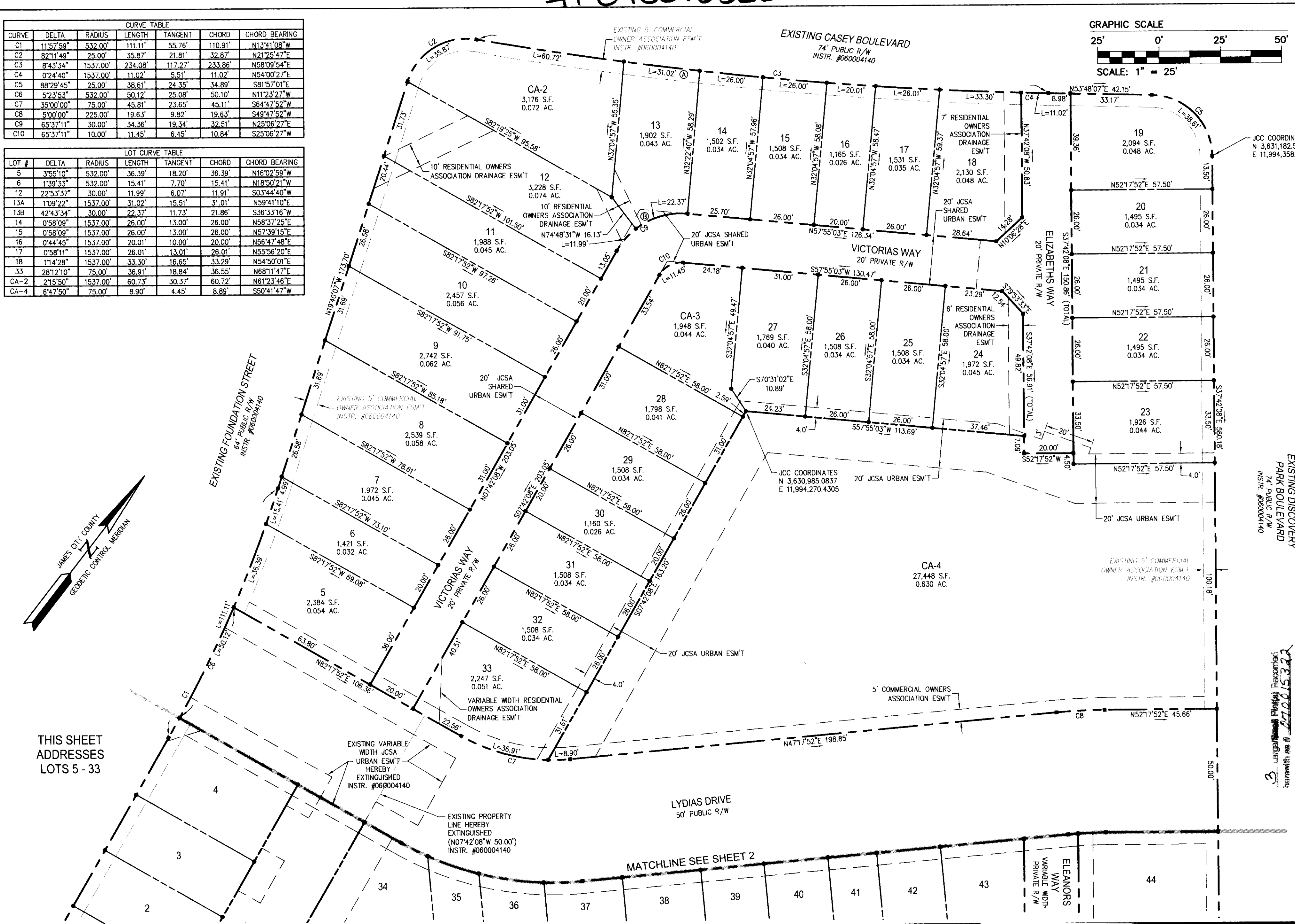
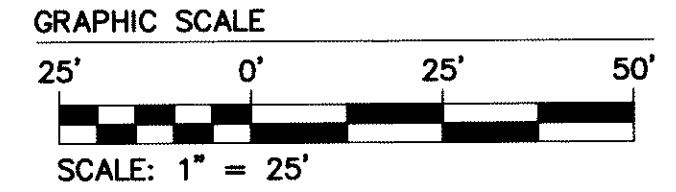


#070015322

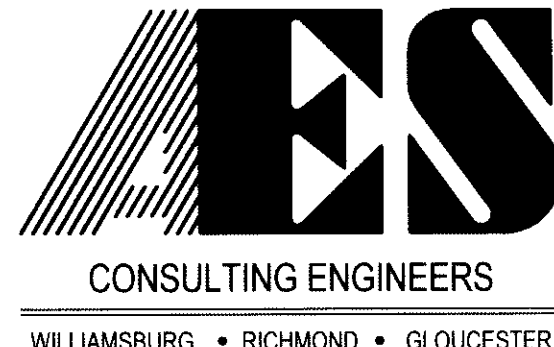
CURVE	DELTA	RADIUS	LENGTH	TANGENT	CHORD	CHORD BEARING
C1	11°57'59"	532.00'	111.11'	55.76'	110.91'	N13°41'08"W
C2	82°11'49"	25.00'	35.87'	21.81'	32.87'	N21°25'47"E
C3	8°43'34"	1537.00'	234.08'	117.27'	233.86'	N58°09'54"E
C4	0°24'40"	1537.00'	11.02'	5.51'	11.02'	N54°00'27"E
C5	88°29'45"	25.00'	38.61'	24.35'	34.89'	S81°57'01"E
C6	5°23'53"	532.00'	50.12'	25.08'	50.10'	N11°23'27"W
C7	35°00'00"	75.00'	45.81'	23.65'	45.11'	S64°47'52"W
C8	5°00'00"	225.00'	19.63'	9.82'	19.63'	S49°47'52"W
C9	65°37'11"	30.00'	34.36'	19.34'	32.51'	N25°06'27"E
C10	65°37'11"	10.00'	11.45'	6.45'	10.84'	S25°06'27"W

LOT #	DELTA	RADIUS	LENGTH	TANGENT	CHORD	CHORD BEARING
5	3°55'10"	532.00'	36.39'	18.20'	36.39'	N16°02'59"W
6	1°39'33"	532.00'	15.41'	7.70'	15.41'	N18°50'21"W
12	22°53'37"	30.00'	11.99'	6.07'	11.91'	S03°44'40"W
13A	1°09'22"	1537.00'	31.02'	15.51'	31.01'	N59°41'10"E
13B	42°43'34"	30.00'	22.37'	11.73'	21.86'	S36°33'16"W
14	0°58'09"	1537.00'	26.00'	13.00'	26.00'	N58°37'25"E
15	0°58'09"	1537.00'	26.00'	13.00'	26.00'	N57°39'15"E
16	0°44'45"	1537.00'	20.01'	10.00'	20.00'	N56°47'48"E
17	0°58'11"	1537.00'	26.01'	13.01'	26.01'	N55°56'20"E
18	1°14'28"	1537.00'	33.30'	16.65'	33.29'	N54°50'01"E
33	28°12'10"	75.00'	36.91'	18.84'	36.55'	N68°11'47"E
CA-2	2°15'50"	1537.00'	60.73'	30.37'	60.72'	N61°23'46"E
CA-4	6°47'50"	75.00'	8.90'	4.45'	8.89'	S50°41'47"W



THIS SHEET ADDRESSES LOTS 5 - 33

S:\Jobs\66321\24-5-BLK10-Residential\dwg\Plats\66321\24-5-SUBD SH3.dwg, 1/17/2006 3:00:44 PM, mayauda.hawkins



5248 Olde Towne Road, Suite 1
Williamsburg, Virginia 23188
(757) 253-0040
Fax (757) 220-8994

PLAT OF SUBDIVISION & LOT LINE EXTINGUISHMENT
NEW TOWN
SECTION 2 & 4, BLOCK 10, PARCEL A, E & F
LOTS 1 THRU 69
BEING A PORTION OF THE PROPERTY OWNED BY
NEW TOWN ASSOCIATES, LLC & HHJV, LLC
BERKELEY DISTRICT JAMES CITY COUNTY VIRGINIA



City of Williamsburg & County of James City Circuit Court: This PLAT was recorded on 30 May 2007 at 3:24 AM/PM, PG. 1 DOCUMENT # 070015322 BETSY B. WOOLRIDGE, CLERK Betsy B. Woolridge Clerk		
1	10/3/06	REVISED PER JCC COMMENT LETTERS
No.	DATE	REVISION / COMMENT / NOTE
		AWT
		BY

Designed REC	Drawn AWT
Scale 1"=25'	Date 8/21/06
Project No. 6632-E-24-5	
Drawing No. 3 OF 3	

3
 Plat of Subdivision & Lot Line Extinguishment
 #070015322
 as the upland