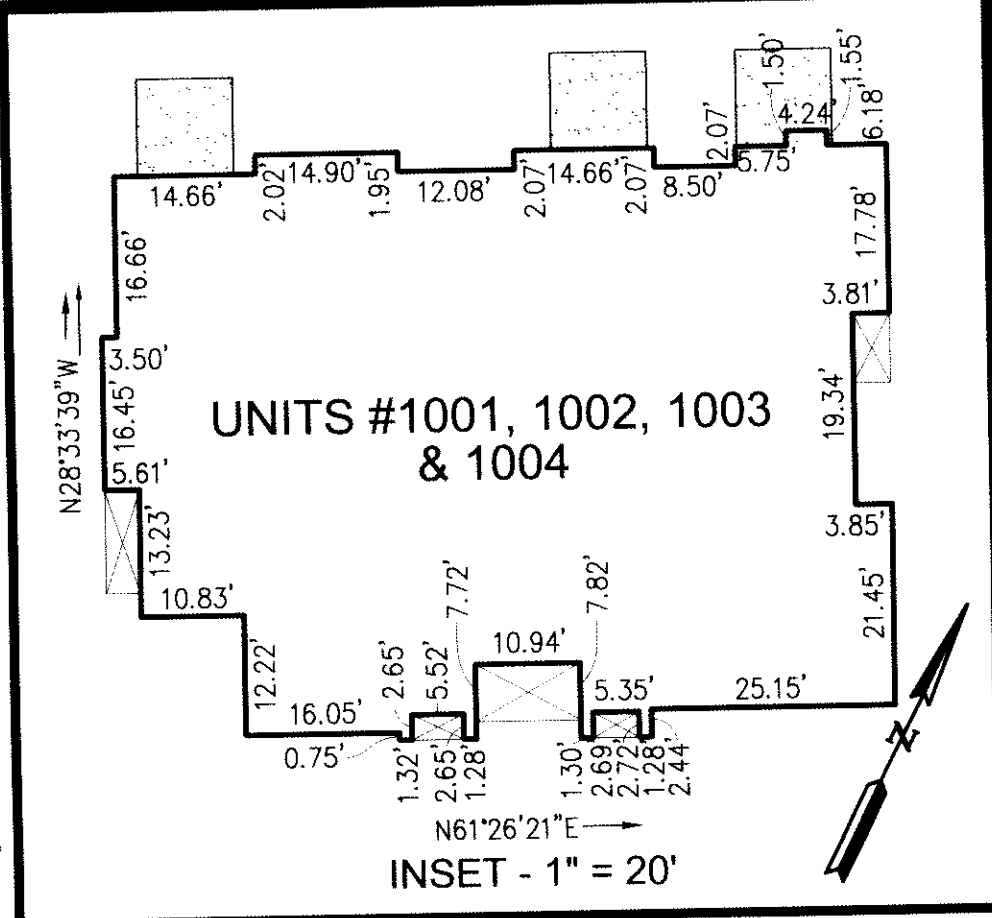
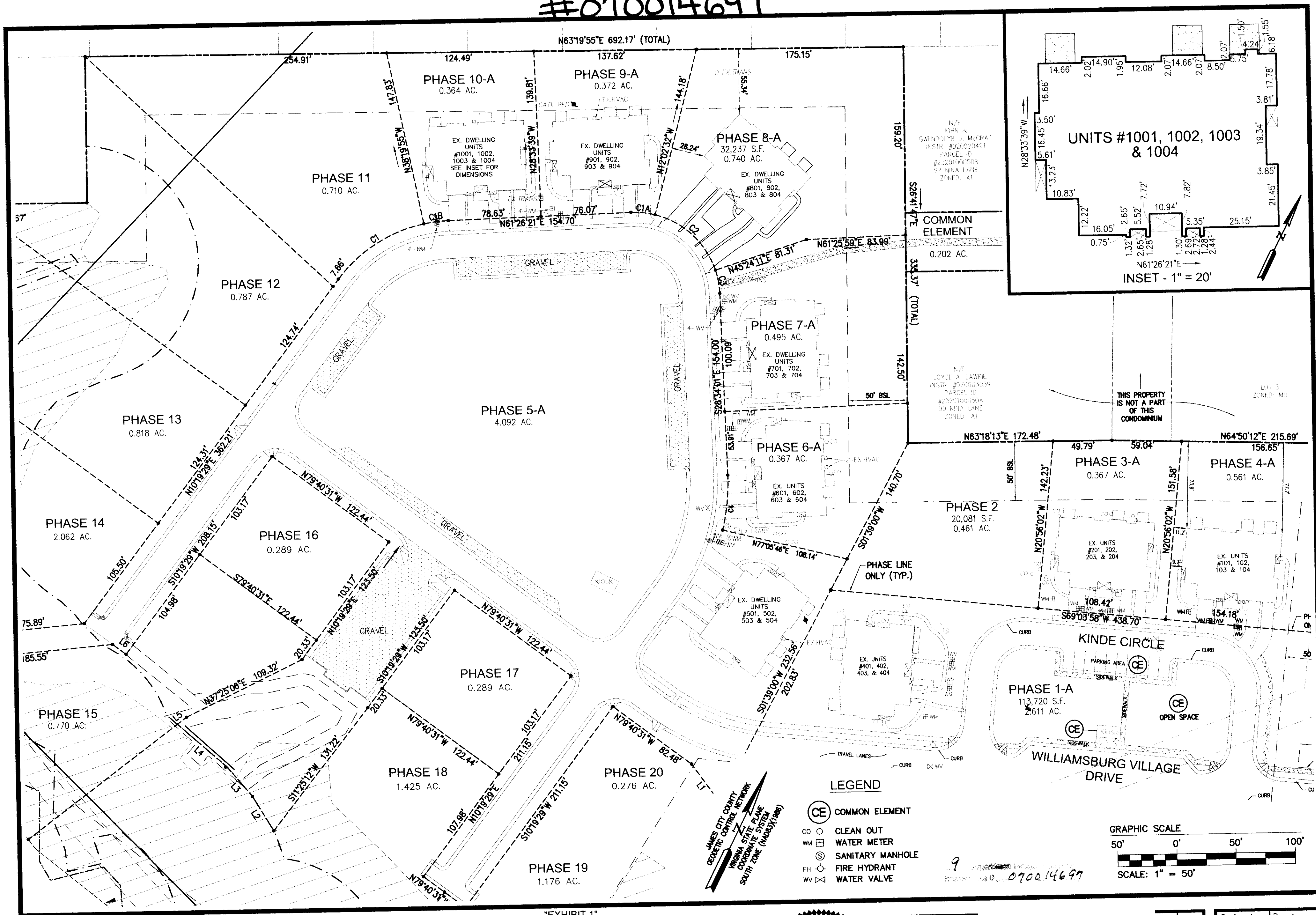


#070014697

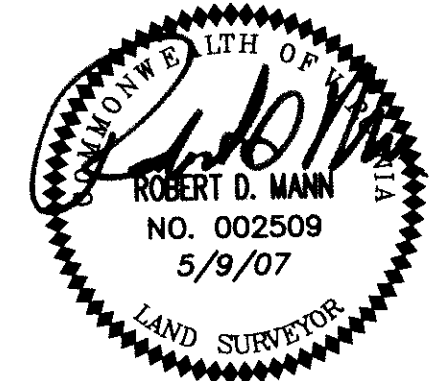


"EXHIBIT 1"



5248 Olde Towne Road, Suite 1
Williamsburg, Virginia 23188
(757) 253-0040
Fax (757) 220-8994

PLAT OF CONDOMINIUM
WILLIAMSBURG VILLAGE AT NORGE CONDOMINIUM
PHASE 10-A
UNITS #1001, 1002, 1003, AND
1004
STONEHOUSE DISTRICT COUNTY OF JAMES CITY VIRGINIA



City of Williamsburg & County of James City Circuit Court. This PLAT was recorded on 18 May 2007 at 11:38 AM/PM PB PG DOCUMENT # 070014697 BETSY B. WOOLRIDGE, CLERK Betsy B. Woolridge Clerk			
No.	DATE	REVISION / COMMENT / NOTE	BY

Designed VMB/JAG	Drawn AWT/MLH
Scale 1"=50'	Date 5/9/07
Project No. 9286-2	
Drawing No. 2 of 9	