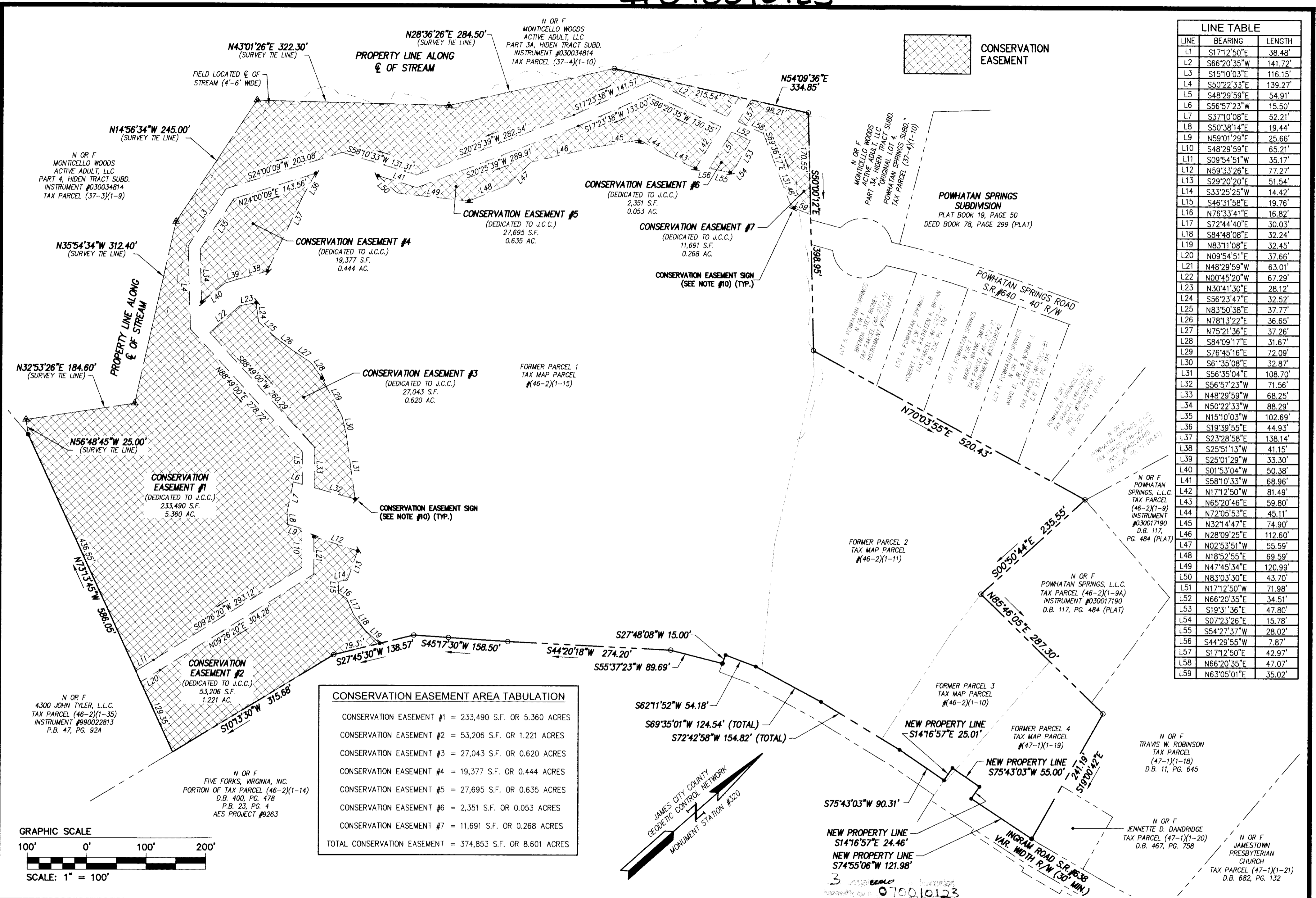
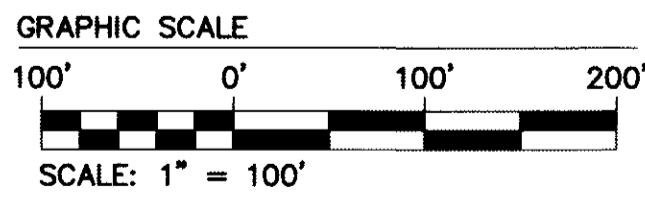


#070010123



LINE TABLE		
LINE	BEARING	LENGTH
L1	S17°12'50"E	38.48'
L2	S66°20'35"W	141.72'
L3	S15°10'03"E	116.15'
L4	S50°22'33"E	139.27'
L5	S48°29'59"E	54.91'
L6	S56°57'23"W	15.50'
L7	S37°10'08"E	52.21'
L8	S50°38'14"E	19.44'
L9	N59°01'29"E	25.66'
L10	S48°29'59"E	65.21'
L11	S09°54'51"W	35.17'
L12	N59°33'26"E	77.27'
L13	S29°20'20"E	51.54'
L14	S33°25'25"W	14.42'
L15	S46°31'58"E	19.76'
L16	N76°33'41"E	16.82'
L17	S72°44'40"E	30.03'
L18	S84°48'08"E	32.24'
L19	N83°11'08"E	32.45'
L20	N09°54'51"E	37.66'
L21	N48°29'59"W	63.01'
L22	N00°45'20"W	67.29'
L23	N30°41'30"E	28.12'
L24	S56°23'47"E	32.52'
L25	N83°50'38"E	37.77'
L26	N78°13'22"E	36.65'
L27	N75°21'36"E	37.26'
L28	S84°09'17"E	31.67'
L29	S76°45'16"E	72.09'
L30	S61°35'08"E	32.87'
L31	S56°35'04"E	108.70'
L32	S56°57'23"W	71.56'
L33	N48°29'59"W	68.25'
L34	N50°22'33"W	88.29'
L35	N15°10'03"W	102.69'
L36	S19°39'55"E	44.93'
L37	S23°28'58"E	138.14'
L38	S25°51'13"W	41.15'
L39	S25°01'29"W	33.30'
L40	S01°53'04"W	50.38'
L41	S58°10'33"W	68.96'
L42	N17°12'50"W	81.49'
L43	N65°20'46"E	59.80'
L44	N72°05'53"E	45.11'
L45	N32°14'47"E	74.90'
L46	N28°09'25"E	112.60'
L47	N02°53'51"W	55.59'
L48	N18°52'55"E	69.59'
L49	N47°45'34"E	120.99'
L50	N83°03'30"E	43.70'
L51	N17°12'50"W	71.98'
L52	N66°20'35"E	34.51'
L53	S19°31'36"E	47.80'
L54	S07°23'26"E	15.78'
L55	S54°27'37"W	28.02'
L56	S44°29'55"W	7.87'
L57	S17°12'50"E	42.97'
L58	N66°20'35"E	47.07'
L59	N63°05'01"E	35.02'

CONSERVATION EASEMENT AREA TABULATION	
CONSERVATION EASEMENT #1	= 233,490 S.F. OR 5.360 ACRES
CONSERVATION EASEMENT #2	= 53,206 S.F. OR 1.221 ACRES
CONSERVATION EASEMENT #3	= 27,043 S.F. OR 0.620 ACRES
CONSERVATION EASEMENT #4	= 19,377 S.F. OR 0.444 ACRES
CONSERVATION EASEMENT #5	= 27,695 S.F. OR 0.635 ACRES
CONSERVATION EASEMENT #6	= 2,351 S.F. OR 0.053 ACRES
CONSERVATION EASEMENT #7	= 11,691 S.F. OR 0.268 ACRES
<b>TOTAL CONSERVATION EASEMENT</b>	<b>= 374,853 S.F. OR 8.601 ACRES</b>



**CONSULTING ENGINEERS**  
WILLIAMSBURG • RICHMOND • GLOUCESTER

5248 Olde Towne Road, Suite 1  
Williamsburg, Virginia 23188  
(757) 253-0040  
Fax (757) 220-8994

**PLAT SHOWING PROPERTY LINE EXTINGUISHMENT,  
VARIOUS EASEMENTS AND  
RIGHT-OF-WAY DEDICATION**

VILLAS AT FIVE FORKS, LLC

BERKELEY DISTRICT      JAMES CITY COUNTY      VIRGINIA



City of Williamsburg & County of James City Circuit Court: This PLAT was recorded on <b>4-06-2007</b>	
at <b>1:40</b> PM, PG. <b>3</b>	
DOCUMENT # <b>070010123</b>	
BETSY B. WOOLRIDGE, CLERK	
<i>Betsy B. Woolridge</i> Clerk	
1 1/4/07 SHEET ADDED PER J.C.C. COMMENT LETTER	AWT AWT
No. DATE REVISION / COMMENT / NOTE	REVISED BY REVIEWED BY

Designed <b>ABS</b>	Drawn <b>AWT</b>
Scale <b>1"=100'</b>	Date <b>7/17/06</b>
Project No. <b>9444-0</b>	
Drawing No. <b>3 of 3</b>	

S:\Jobs\9444-0-Villas at Jamestown\dwg\Sur\Plats\9444-001.dwg, 1/8/2007 11:03:15 AM, Plotter: HP 500 Mylar.pc3