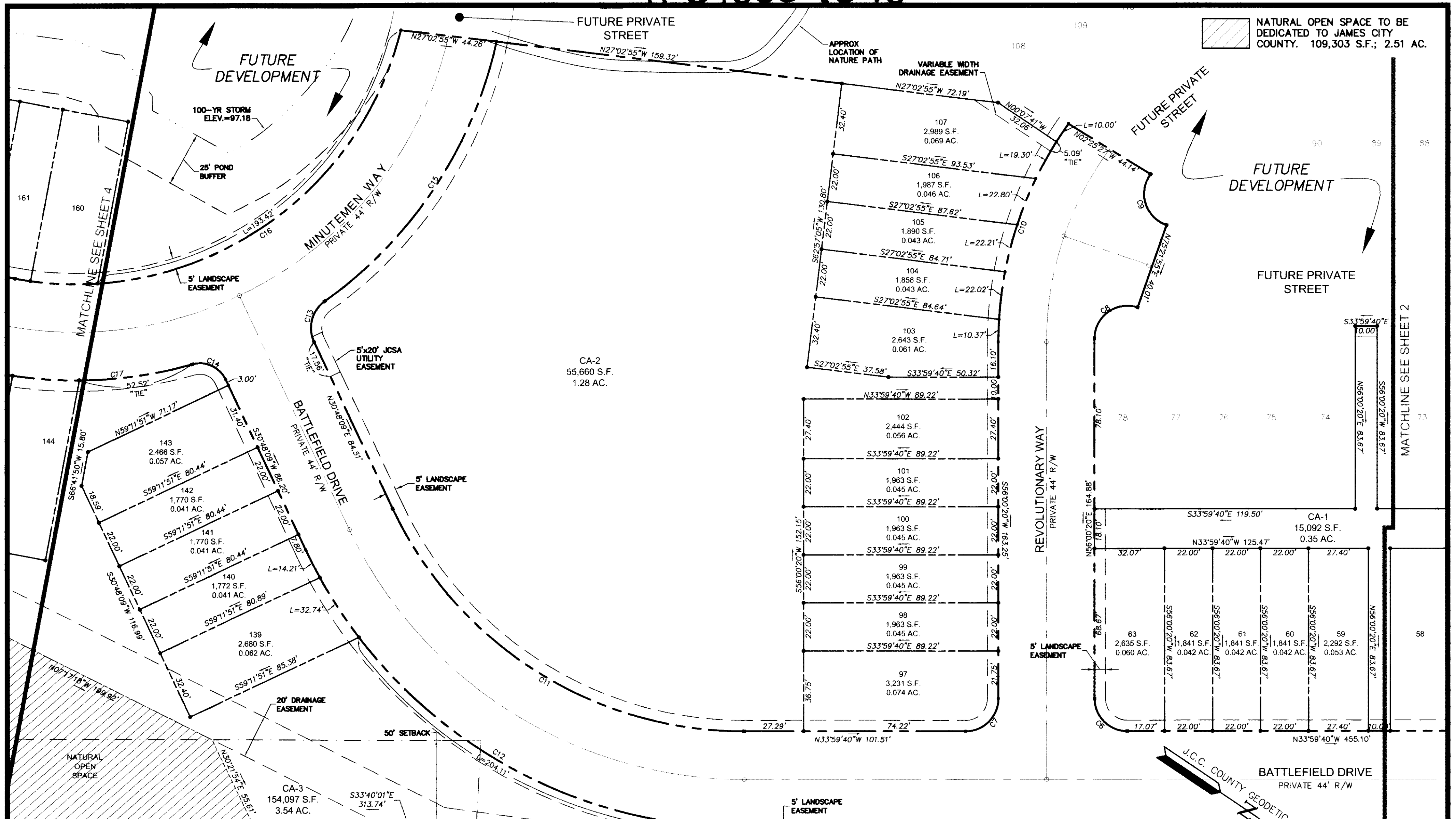
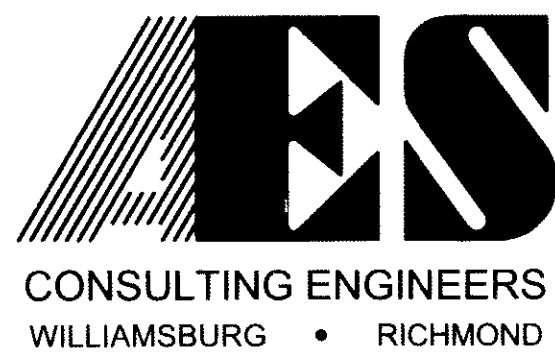
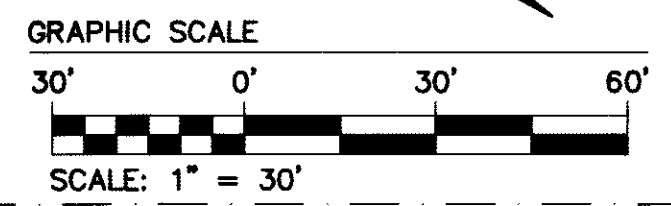


070009013



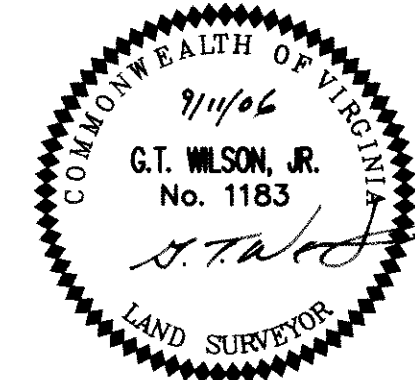
CURVE	DELTA	RADIUS	LENGTH	TANGENT	CHORD	CHORD BEARING
C6	90°00'00"	15.00'	23.56'	15.00'	21.21'	N11°00'20"E
C7	90°00'00"	15.00'	23.56'	15.00'	21.21'	N78°59'40"W
C8	108°22'50"	15.00'	28.37'	20.79'	24.33'	S69°48'15"E
C9	108°49'50"	15.00'	28.49'	20.96'	24.40'	N38°30'00"E
C10	35°32'29"	172.00'	106.70'	55.13'	104.99'	S73°46'34"W
C11	64°47'49"	178.00'	201.30'	112.96'	190.75'	N01°35'46"W
C12	64°47'49"	222.00'	251.06'	140.88'	237.90'	S01°35'46"E
C13	79°56'55"	15.00'	20.93'	12.58'	19.27'	N70°46'37"E
C14	80°21'39"	13.00'	18.23'	10.98'	16.78'	S09°25'24"E
C15	42°19'24"	197.00'	145.52'	76.26'	142.23'	N89°35'22"E
C16	86°41'15"	153.00'	231.49'	144.40'	210.03'	N66°38'47"W
C17	26°18'02"	197.00'	90.43'	46.03'	89.64'	S36°27'11"E

NOTE:
 1. THIS SHEET ADDRESS LOTS 59-63, 97-107, 139-143, CA-1, CA-2 & CA-3
 2. SEE SHEET 5 FOR LOT CURVE TABLE.



5248 Olde Towne Road, Suite 1
 Williamsburg, Virginia 23188
 (757) 253-0040
 Fax (757) 220-8994

PLAT OF SUBDIVISION
PHASE 1
LIBERTY CROSSING
 LOTS 49 THRU 63, 97 THRU 107 &
 139 THRU 186
 STONEHOUSE DISTRICT JAMES CITY COUNTY VIRGINIA



City of Williamsburg & County of James City Circuit Court. This PLAT was recorded on <u>28 March 2007</u> at <u>10:53 AM</u> P.M. PG. <u>1</u> DOCUMENT # <u>070009075</u>	
BETSY B. WOOLRIDGE, CLERK	
<i>Betsy B. Woolridge</i> Clerk	
No.	DATE
1	12/4/06
REVISION / COMMENT / NOTE	
	MJR
	BY

Designed JAG	Drawn GVC/JTH
Scale 1"=30'	Date 9/11/06
Project No. 9353-05	
Drawing No. 3 OF 5	