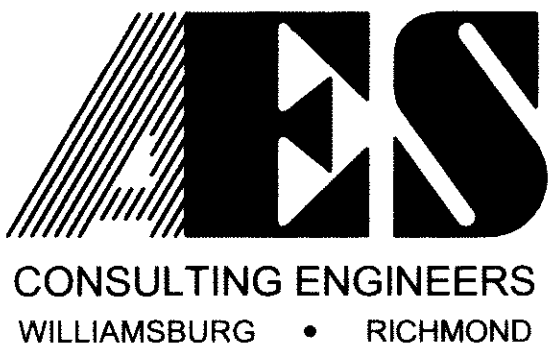
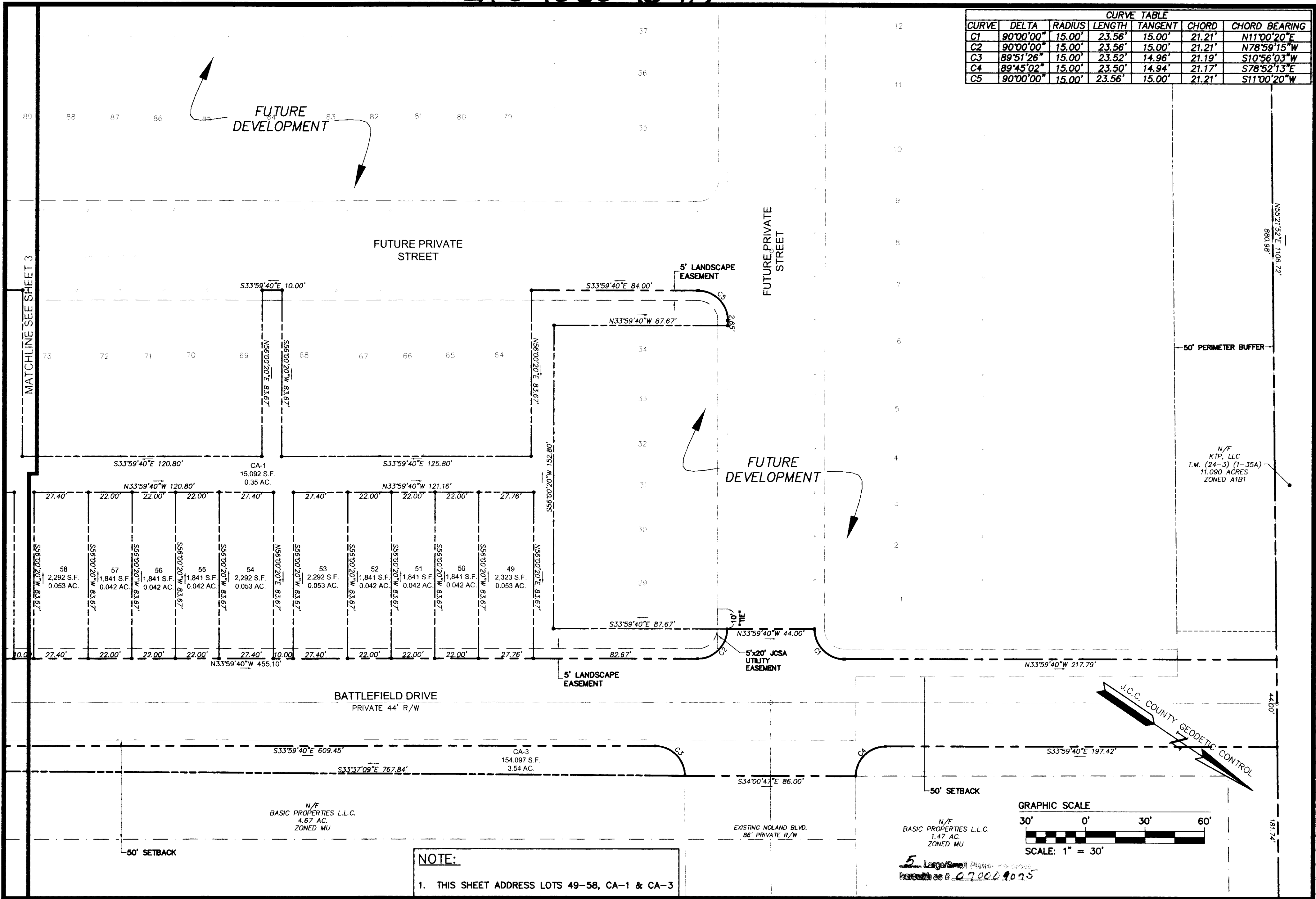


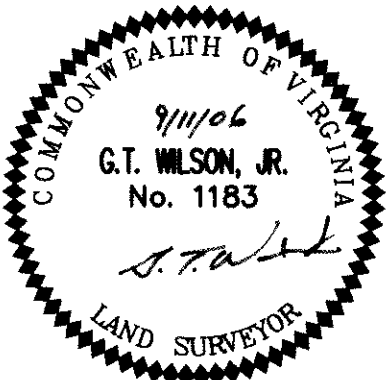
#010009015

CURVE TABLE						
CURVE	DELTA	RADIUS	LENGTH	TANGENT	CHORD	CHORD BEARING
C1	90°00'00"	15.00'	23.56'	15.00'	21.21'	N11°00'20"E
C2	90°00'00"	15.00'	23.56'	15.00'	21.21'	N78°59'15"W
C3	89°51'26"	15.00'	23.52'	14.96'	21.19'	S10°56'03"W
C4	89°45'02"	15.00'	23.50'	14.94'	21.17'	S78°52'13"E
C5	90°00'00"	15.00'	23.56'	15.00'	21.21'	S11°00'20"W



5248 Olde Towne Road, Suite 1
Williamsburg, Virginia 23188
(757) 253-0040
Fax (757) 220-8994

PLAT OF SUBDIVISION
PHASE 1
LIBERTY CROSSING
LOTS 49 THRU 63, 97 THRU 107 &
139 THRU 186
STONEHOUSE DISTRICT JAMES CITY COUNTY VIRGINIA



City of Williamsburg & County of James City			
Circuit Court: This PLAT was recorded on			
28 March 2007			
at 10:53 AM/PM-PB PG			
DOCUMENT # 070009015			
BETSY B. WOOLRIDGE, CLERK			
Betsy B. Woolridge Clerk			
No.	DATE	REVISION / COMMENT / NOTE	BY
1	12/4/06	REVISED PER J.C.C. COMMENTS DATED 10/11/06	MJR

Designed	Drawn
JAG	GVC/JTH
Scale	Date
1"=30'	9/11/06
Project No.	
9353-05	
Drawing No.	
2 OF 5	