

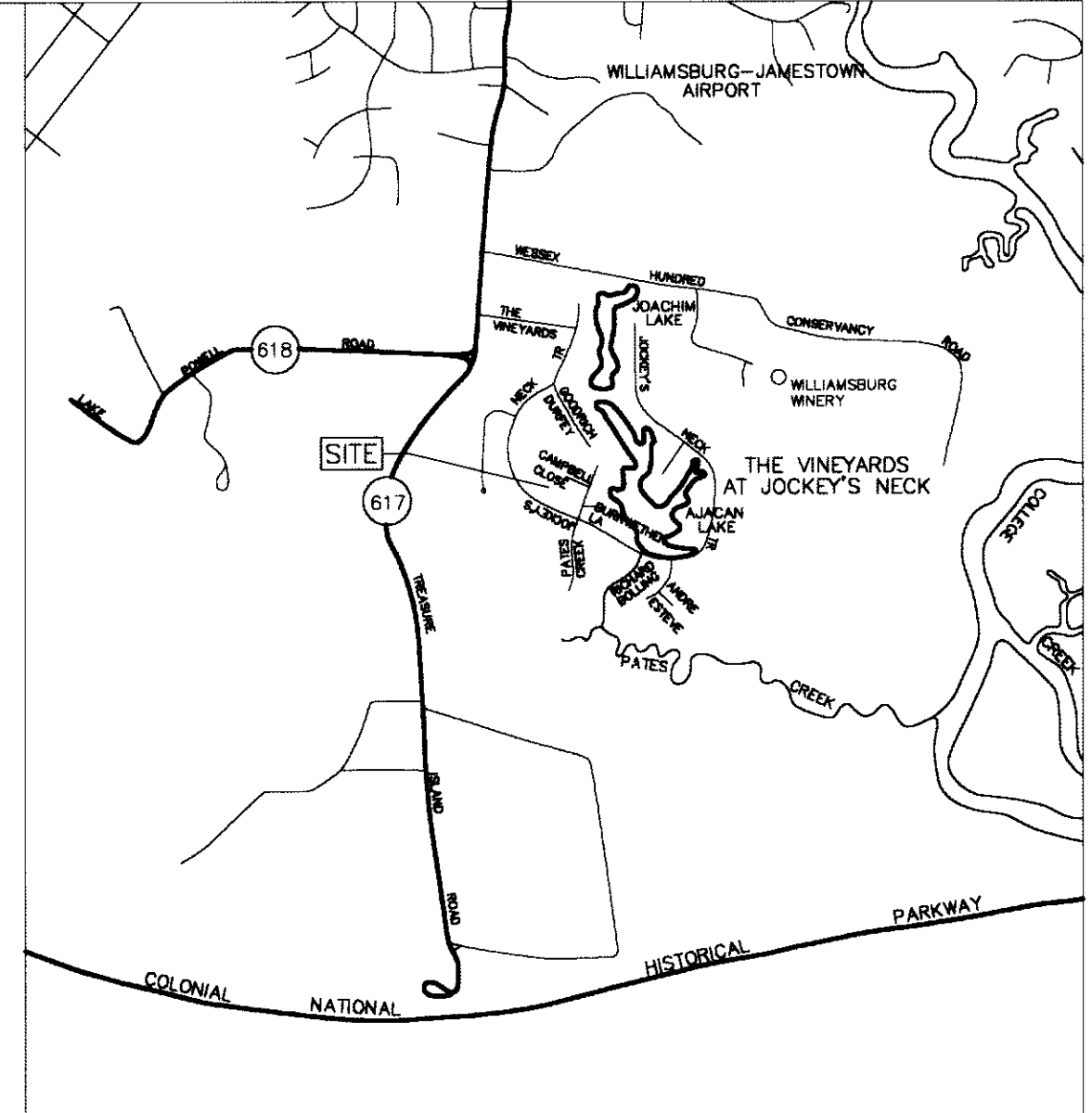
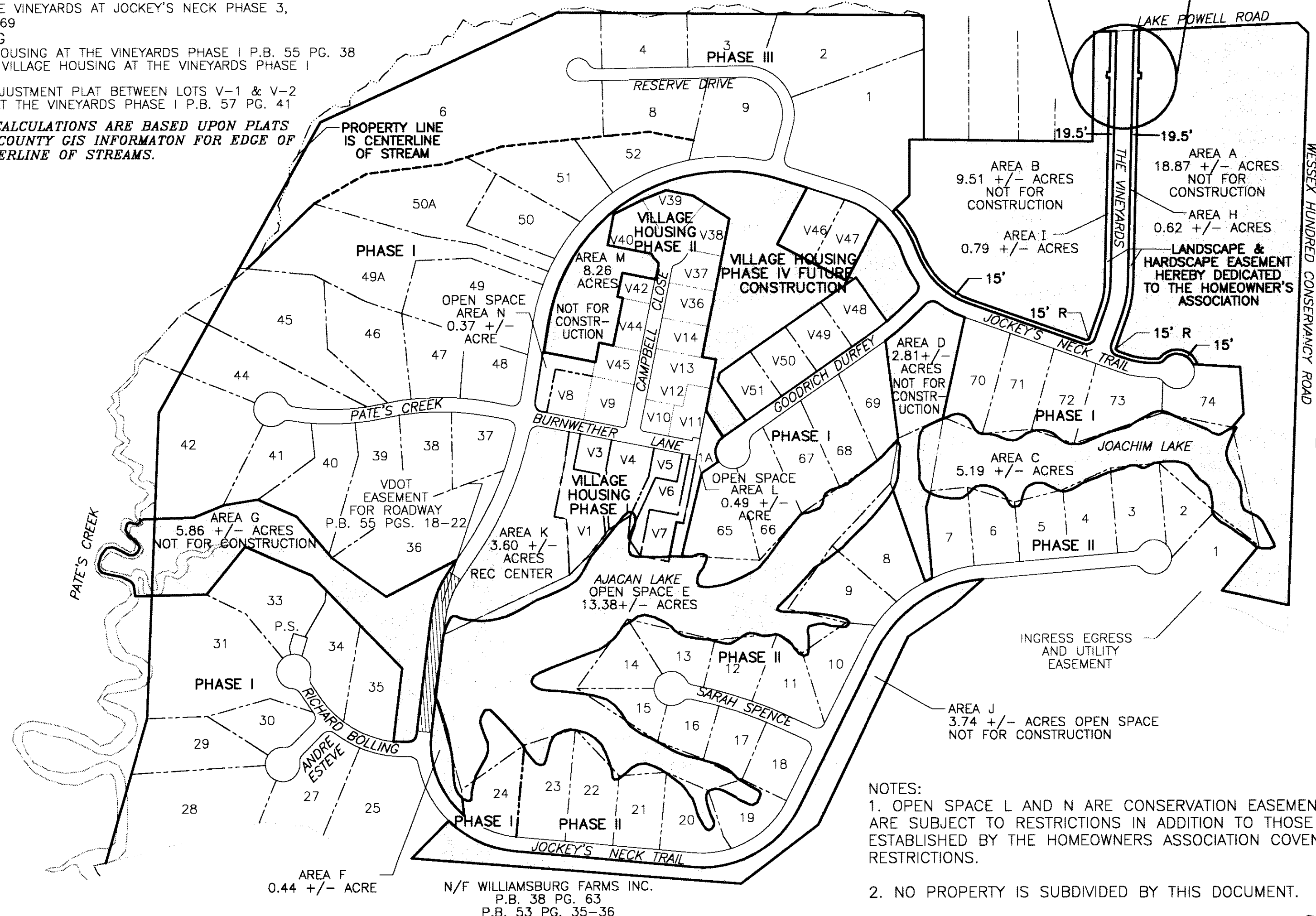
#070007019

REFERENCE PLATS:  
 VINEYARDS AT JOCKEY'S NECK  
 PHASE I  
 PLAT OF THE VINEYARDS AT JOCKEY'S NECK PHASE I P.B. 51 PGS. 88-92  
 AMENDED PLAT OF THE VINEYARDS AT JOCKEY'S NECK PHASE I P.B. 55 PGS. 18-22  
 RESUBDIVISION OF LOTS 30,31 & 32 THE VINEYARDS AT JOCKEY'S NECK PHASE I P.B. 57 PG. 10  
 PLAT OF PROPERTY LINE EXTINGUISHMENT LOTS 42 & 43 PHASE I THE VINEYARDS AT JOCKEY'S NECK P.B. 60 PG. 51  
 PLAT OF PROPERTY LINE EXTINGUISHMENT LOTS 25 & 26 PHASE I THE VINEYARDS AT JOCKEY'S NECK P.B. 61 PG. 10  
 RESUBDIVISION OF LOTS 49 & 50 THE VINEYARDS AT JOCKEY'S NECK PHASE I P.B. 62 PG. 44.  
 PHASE II  
 PLAT OF THE VINEYARDS AT JOCKEY'S NECK PHASE II P.B. 52 PGS. 58-59  
 AMENDED PLAT OF THE VINEYARDS AT JOCKEY'S NECK PHASE II P.B. 55 PGS. 23-24  
 PROPERTY LINE ADJUSTMENT LOT 10 THE VINEYARDS AT JOCKEY'S NECK PHASE II P.B. 61 PG. 7

VILLAGE HOUSING  
 PLAT OF VILLAGE HOUSING AT THE VINEYARDS PHASE II P.B. 59 PG. 93  
 PLAT OF BOUNDARY LINE ADJUSTMENT VILLAGE HOUSING AT THE VINEYARDS PHASE I AND PHASE II LOTS 9,45 & 46 P.B. 67 PG. 36  
 PLAT OF BOUNDARY LINE ADJUSTMENT VILLAGE HOUSING AT THE VINEYARDS PHASE II LOT 40 P.B. 66 PG. 95  
 PLAT OF SUBDIVISION VILLAGE HOUSING AT THE VINEYARDS PHASE II LOT 39 P.B. 69 PG. 32  
 BOUNDARY LINE ADJUSTMENT OF LOTS 12,13 & 14, SUBDIVISION OF LOTS 36,37, & 38 VILLAGE HOUSING AT THE VINEYARDS PHASE II P.B. 78 PG. 56  
 BOUNDARY LINE ADJUSTMENT OF LOTS 13 & 14 PHASE II VILLAGE HOUSING AT THE VINEYARDS PHASE II P.B. 80 PG. 61  
 BOUNDARY LINE ADJUSTMENT OF LOTS 13,14,36,37 & 38 PHASE II VILLAGE HOUSING AT THE VINEYARDS P.B. 83 PG. 72  
 BOUNDARY LINE ADJUSTMENT OF LOTS 8,9, 45, & CONSERVATION EASEMENT PHASE I VILLAGE HOUSING AT THE VINEYARDS P.B. 83 PG. 83  
 VILLAGE HOUSING AT THE VINEYARDS BOUNDARY LINE ADJUSTMENT OF LOTS 11,41, & 42 P.B. 86 PGS. 24-25.  
 BOUNDARY LINE EXTINGUISHMENT OF THE PROPERTY OF GRAZIADEI, DOCUMENT NO. 050015149  
 BOUNDARY LINE ADJUSTMENT BETWEEN THE PROPERTY OF WESSEX HUNDRED DEVELOPMENT, INC. AND GRAZIADEI, DOCUMENT NO. 060017146  
 PLAT TO EXTINGUISH A PROPERTY LINE BETWEEN PROPERTIES OF LASHINGER, P.B. 85, PG. 75  
 PLAT OF VILLAGE HOUSING AT THE VINEYARDS PHASE IV INST. NO. 070002025

PHASE III  
 PLAT OF THE VINEYARDS AT JOCKEY'S NECK PHASE III P.B. 79 PGS. 71-73  
 SUBDIVISION OF LOT 1, PHASE 3, THE VINEYARDS AT JOCKEY'S NECK DOCUMENT NO. 040009703  
 BOUNDARY LINE ADJUSTMENT OF LOTS 5, 6, 7 & 8 AND RIGHT OF WAY VACATION PLAT, THE VINEYARDS AT JOCKEY'S NECK PHASE 3, INST. NO. 070006869  
 VILLAGE HOUSING  
 PLAT OF VILLAGE HOUSING AT THE VINEYARDS PHASE I P.B. 55 PG. 38  
 AMENDED PLAT OF VILLAGE HOUSING AT THE VINEYARDS PHASE I P.B. 56 PG. 96  
 BOUNDARY LINE ADJUSTMENT PLAT BETWEEN LOTS V-1 & V-2 VILLAGE HOUSING AT THE VINEYARDS PHASE I P.B. 57 PG. 41

NOTE: ACREAGE CALCULATIONS ARE BASED UPON PLATS OF RECORD AND COUNTY GIS INFORMATION FOR EDGE OF WATER AND CENTERLINE OF STREAMS.



VICINITY MAP SCALE: 1" = 2000'

OPEN SPACE SUMMARY

CURRENT TOTAL OPEN SPACE	65.67 ACRES
PROPOSED VILLAGE HOUSING PHASE III OPEN SPACE	8.26 ACRES
RESIDUAL OPEN SPACE	73.93 ACRES

N/F WILLIAMSBURG FARMS INC.  
 P.B. 38 PG. 63  
 P.B. 53 PG. 35-36

EXHIBIT SHOWING  
 LANDSCAPE AND HARDSCAPE  
 EASEMENT & OPEN SPACE EXHIBIT  
 VINEYARDS AT JOCKEY'S NECK

JAMESTOWN DISTRICT  
 JAMES CITY COUNTY, VIRGINIA  
 SCALE: 1" = 300' 03/09/07  
 SHEET 1 OF 1



4029 Ironbound Road Suite 100 Williamsburg, VA 23188  
 Tel. (757) 253-2975 Fax (757) 229-0049 Email: lmdg@landmarkdg.com  
 5544 Greenwich Road Suite 200 Virginia Beach, VA 23462  
 Tel. (757) 473-2000 Fax (757) 497-7933 Email: lmdg@landmarkdg.com



NOTES:  
 1. OPEN SPACE L AND N ARE CONSERVATION EASEMENTS AND ARE SUBJECT TO RESTRICTIONS IN ADDITION TO THOSE ESTABLISHED BY THE HOMEOWNERS ASSOCIATION COVENANTS AND RESTRICTIONS.  
 2. NO PROPERTY IS SUBDMIDED BY THIS DOCUMENT.

Large/Small Plat(s) Recorded herewith as # 070007019

STATE OF VIRGINIA  
 COUNTY OF JAMES CITY  
 IN THE CLERK'S OFFICE OF THE CIRCUIT COURT FOR THE COUNTY OF JAMES CITY THIS 12th DAY OF March 2007 THIS MAP WAS PRESENTED AND ADMITTED TO THE RECORD AS THE LAW DIRECTS.

TESTE: Betsy B. Woolridge CLERK  
 DOCUMENT NO. 070007019

City of Williamsburg & County of James City  
 Circuit Court: This PLAT was recorded on 12 March 2007  
 at 3:01 P.M. PG. 1  
 DOCUMENT # 070007019  
 BETSY B. WOOLRIDGE, CLERK  
Betsy B. Woolridge Clerk