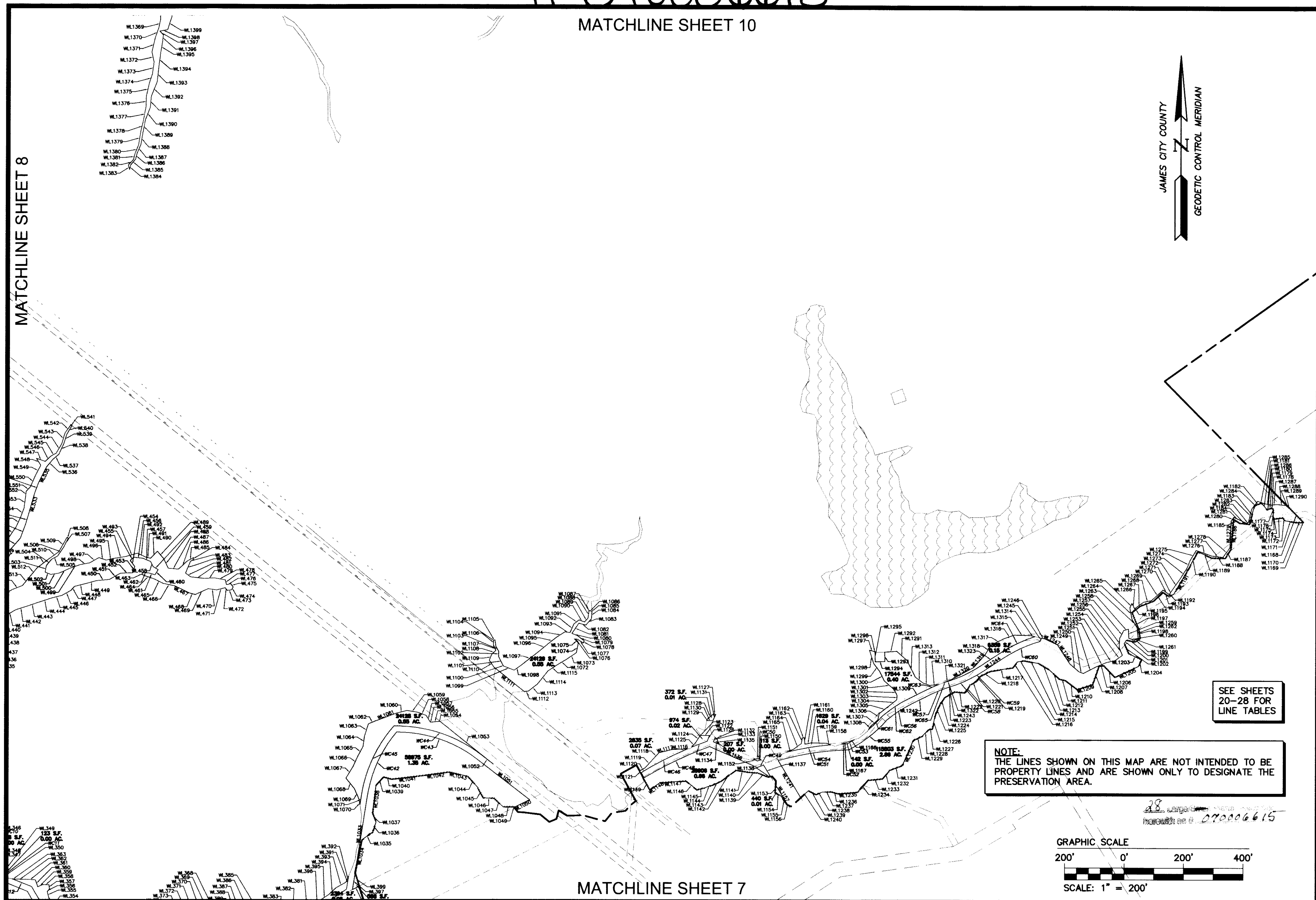
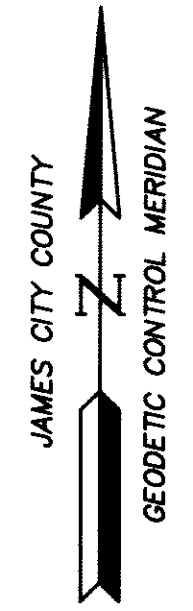


#070006615

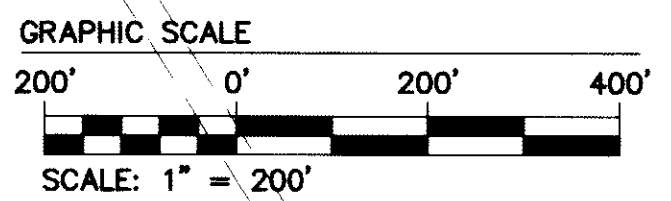
MATCHLINE SHEET 10

MATCHLINE SHEET 8

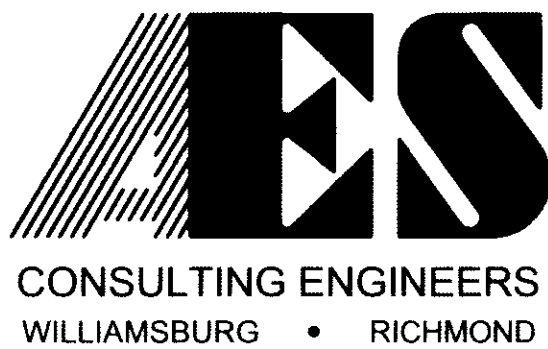


SEE SHEETS 20-28 FOR LINE TABLES

NOTE:
THE LINES SHOWN ON THIS MAP ARE NOT INTENDED TO BE PROPERTY LINES AND ARE SHOWN ONLY TO DESIGNATE THE PRESERVATION AREA.



S:\Jobs\888111L-Preservation Map and Exhibit-DEQ\dwg\CadMap SHOWING PRESERVATION AREAS.dwg, 3/2/2007 10:56:48 AM, roy.pennington



5248 Olde Towne Road, Suite 1
Williamsburg, Virginia 23188
(757) 253-0040
Fax (757) 220-8994

MAP SHOWING PRESERVATION AREAS

LOCATED ON THE PROPERTY OWNED BY
COLONIAL HERITAGE

STONEHOUSE DISTRICT COUNTY OF JAMES CITY VIRGINIA

| | | | | |
|-----|------|--|------------|-------------|
| No. | DATE | REVISION / COMMENT / NOTE | REVISED BY | REVIEWED BY |
| | | City of Williamsburg & County of James City Circuit Court. This PLAT was recorded on <u>8 March 2007</u> at <u>8:57</u> AM/PM-PB PG. DOCUMENT # <u>070006615</u> Betsy B. Woolridge, CLERK <u>Betsy B. Woolridge</u> Clerk | | |

| | |
|--------------------------|--------------------|
| Designed AES | Drawn AES |
| Scale 1"=200' | Date 01/15/2007 |
| Project No. 8881-11-O | |
| Drawing No. 9 of 28 | |