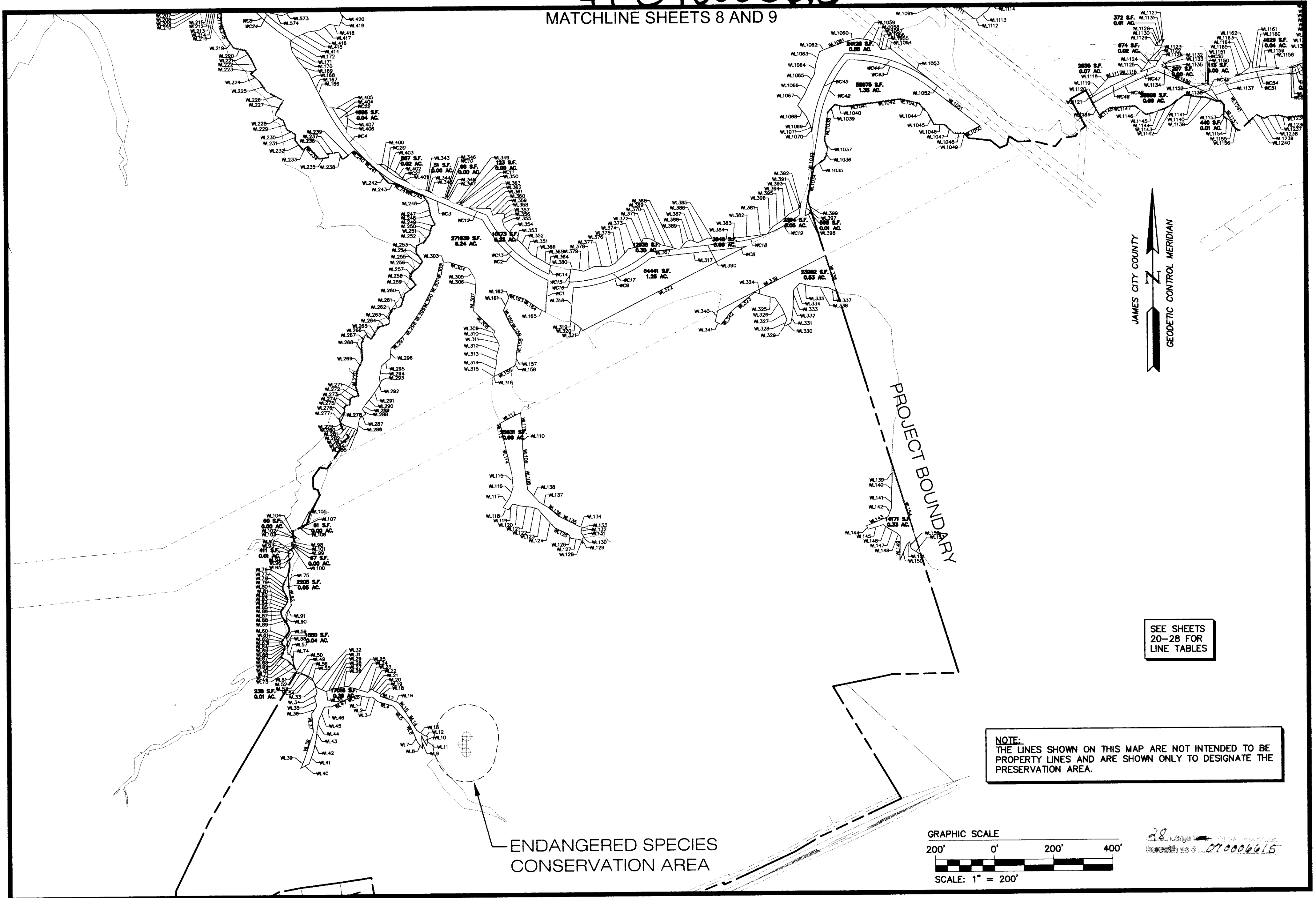
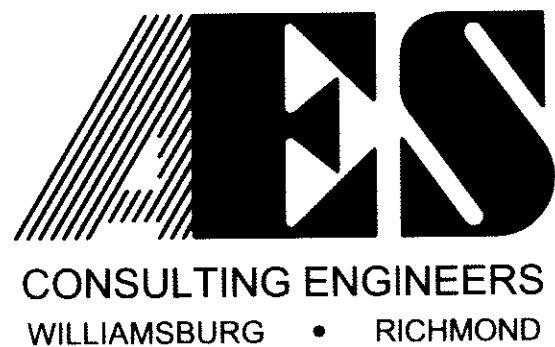


070006615

MATCHLINE SHEETS 8 AND 9



S:\Jobs\888111\11-Preservation Map and Exhibit-DEQ\dwg\CadMAP SHOWING PRESERVATION AREAS.dwg, 3/2/2007 10:31:14 AM, roy.pennington



5248 Olde Towne Road, Suite 1
 Williamsburg, Virginia 23188
 (757) 253-0040
 Fax (757) 220-8994

MAP SHOWING PRESERVATION AREAS

LOCATED ON THE PROPERTY OWNED BY
 COLONIAL HERITAGE

STONEHOUSE DISTRICT COUNTY OF JAMES CITY VIRGINIA

No.	DATE	REVISION / COMMENT / NOTE	REVISED BY	REVIEWED BY

City of Williamsburg & County of James City
 Circuit Court: This PLAT was recorded on
8 March 2007
 at 9:51 AM/PM PG 1
 DOCUMENT # 070006615
 BETSY B. WOOLRIDGE, CLERK
Betsy B. Woolridge Clerk

Designed AES	Drawn AES
Scale 1"=200'	Date 01/15/2007
Project No. 8881-11-O	
Drawing No. 7 of 28	