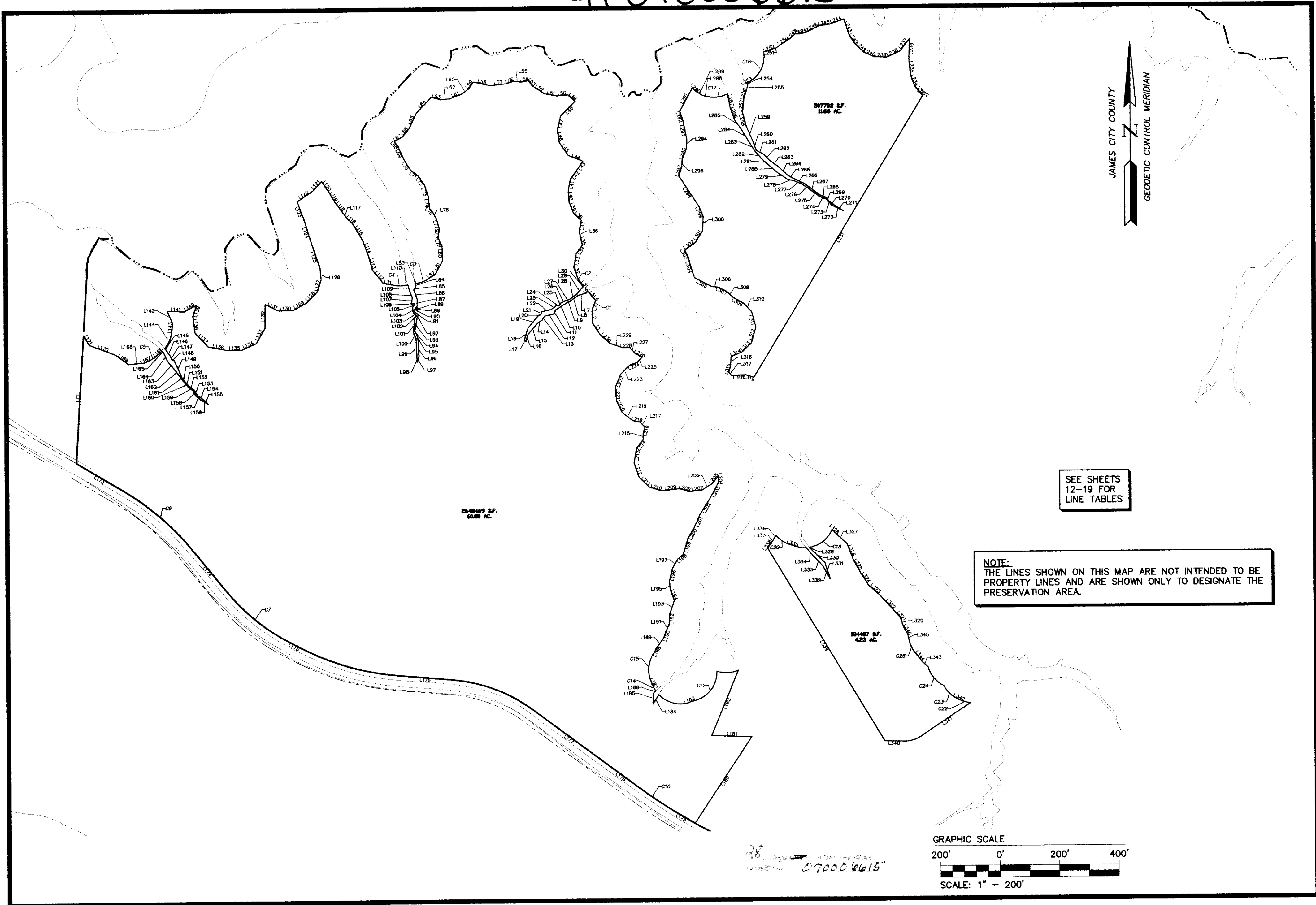
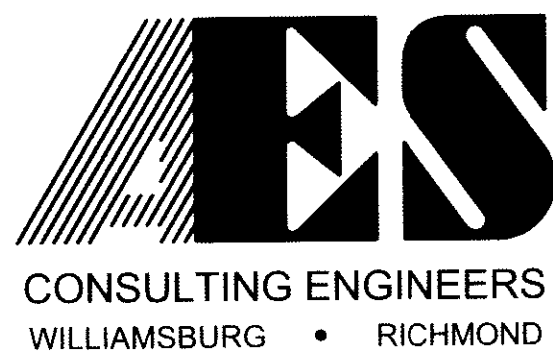


#070006615



S:\Jobs\8881111-Preservation Map and Exhibit\DEQ\dwg\Cad\MAP SHOWING PRESERVATION AREAS.dwg, 3/2/2007 8:34:22 AM, roy.pennington



5248 Olde Towne Road, Suite 1  
 Williamsburg, Virginia 23188  
 (757) 253-0040  
 Fax (757) 220-8994

**MAP SHOWING PRESERVATION AREAS**  
 LOCATED ON THE PROPERTY OWNED BY  
**COLONIAL HERITAGE**

STONEHOUSE DISTRICT COUNTY OF JAMES CITY VIRGINIA

City of Williamsburg & County of James City			
Circuit Court. This PLAT was recorded on			
at 8:51 AM on 01/15/2007			
DOCUMENT # 070006615			
BETSY B. WOOLRIDGE, CLERK			
<i>Betsy B. Woolridge</i> Clerk			
No.	DATE	REVISION / COMMENT / NOTE	REVISED BY

Designed AES	Drawn AES
Scale 1"=200'	Date 01/15/2007
Project No. 8881-11-O	
Drawing No. 6 of 28	