

#07000 4613

NOTES:

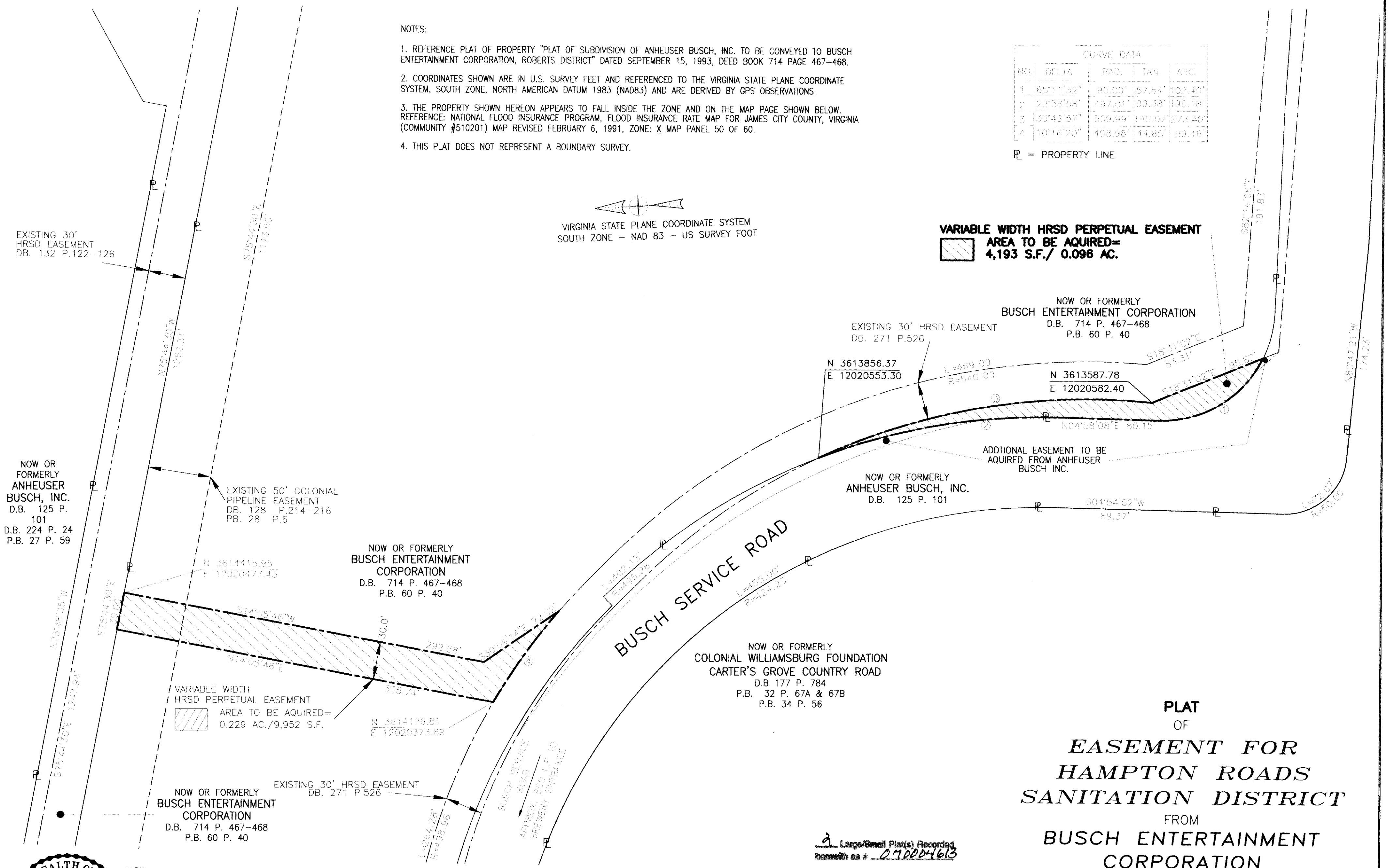
1. REFERENCE PLAT OF PROPERTY "PLAT OF SUBDIVISION OF ANHEUSER BUSCH, INC. TO BE CONVEYED TO BUSCH ENTERTAINMENT CORPORATION, ROBERTS DISTRICT" DATED SEPTEMBER 15, 1993, DEED BOOK 714 PAGE 467-468.
2. COORDINATES SHOWN ARE IN U.S. SURVEY FEET AND REFERENCED TO THE VIRGINIA STATE PLANE COORDINATE SYSTEM, SOUTH ZONE, NORTH AMERICAN DATUM 1983 (NAD83) AND ARE DERIVED BY GPS OBSERVATIONS.
3. THE PROPERTY SHOWN HEREON APPEARS TO FALL INSIDE THE ZONE AND ON THE MAP PAGE SHOWN BELOW. REFERENCE: NATIONAL FLOOD INSURANCE PROGRAM, FLOOD INSURANCE RATE MAP FOR JAMES CITY COUNTY, VIRGINIA (COMMUNITY #510201) MAP REVISED FEBRUARY 6, 1991, ZONE: X MAP PANEL 50 OF 60.
4. THIS PLAT DOES NOT REPRESENT A BOUNDARY SURVEY.

CURVE DATA				
NO.	DELTA	RAD.	TAN.	ARC.
1	65°11'32"	90.00'	57.54'	102.40'
2	22°36'58"	497.01'	99.38'	196.18'
3	30°42'57"	509.99'	140.07'	275.40'
4	10°16'20"	498.98'	44.85'	89.46'

PL = PROPERTY LINE

VIRGINIA STATE PLANE COORDINATE SYSTEM
SOUTH ZONE - NAD 83 - US SURVEY FOOT

VARIABLE WIDTH HRSD PERPETUAL EASEMENT
AREA TO BE ACQUIRED=
4,193 S.F./ 0.096 AC.



EXISTING 30' HRSD EASEMENT
DB. 132 P.122-126

NOW OR FORMERLY
ANHEUSER
BUSCH, INC.
D.B. 125 P. 101
D.B. 224 P. 24
P.B. 27 P. 59

EXISTING 50' COLONIAL
PIPELINE EASEMENT
DB. 128 P.214-216
PB. 28 P.6

NOW OR FORMERLY
BUSCH ENTERTAINMENT
CORPORATION
D.B. 714 P. 467-468
P.B. 60 P. 40

VARIABLE WIDTH
HRSD PERPETUAL EASEMENT
AREA TO BE ACQUIRED=
0.229 AC./9,952 S.F.

NOW OR FORMERLY
BUSCH ENTERTAINMENT
CORPORATION
D.B. 714 P. 467-468
P.B. 60 P. 40

EXISTING 30' HRSD EASEMENT
DB. 271 P.526

N 3613856.37
E 12020553.30

NOW OR FORMERLY
BUSCH ENTERTAINMENT CORPORATION
D.B. 714 P. 467-468
P.B. 60 P. 40

N 3613587.78
E 12020582.40

ADDITIONAL EASEMENT TO BE
ACQUIRED FROM ANHEUSER
BUSCH INC.

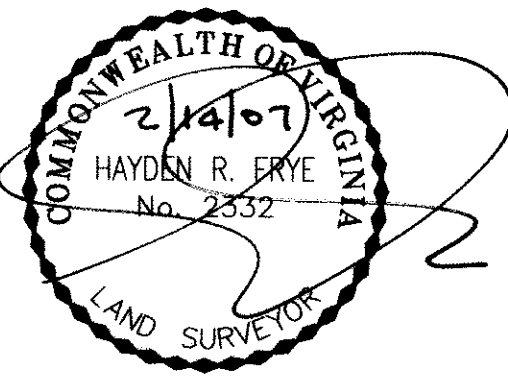
NOW OR FORMERLY
ANHEUSER BUSCH, INC.
D.B. 125 P. 101

NOW OR FORMERLY
COLONIAL WILLIAMSBURG FOUNDATION
CARTER'S GROVE COUNTRY ROAD
D.B. 177 P. 784
P.B. 32 P. 67A & 67B
P.B. 34 P. 56

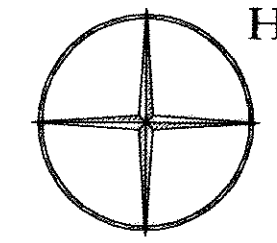
PLAT
OF
**EASEMENT FOR
HAMPTON ROADS
SANITATION DISTRICT**
FROM
**BUSCH ENTERTAINMENT
CORPORATION**

TAX PARCEL #5040100001 & 5140100009
D.B. 714 P. 467-468
P.B. 60 P.40
JAMES CITY COUNTY, VIRGINIA
SEPTEMBER 14, 2006

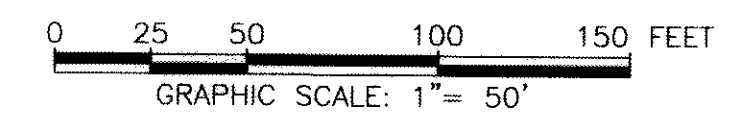
A Large/Small Plat(s) Recorded
herewith as # 070004613



City of Williamsburg & County of James City
Circuit Court: This PLAT was recorded on
16 February 2007
at 12:35 AM/PM PB 1 PG 1
DOCUMENT # 070004613
BETSY B. WOOLRIDGE, CLERK
Betsy B. Woolridge Clerk



Hayden Frye and Associates, Inc.
Land Surveyors
612 NEVAN ROAD, SUITE 108
VIRGINIA BEACH, VA., 23451
PH: (757) 491-7228 FX:(757) 491-7229



#070004613

NOTES:

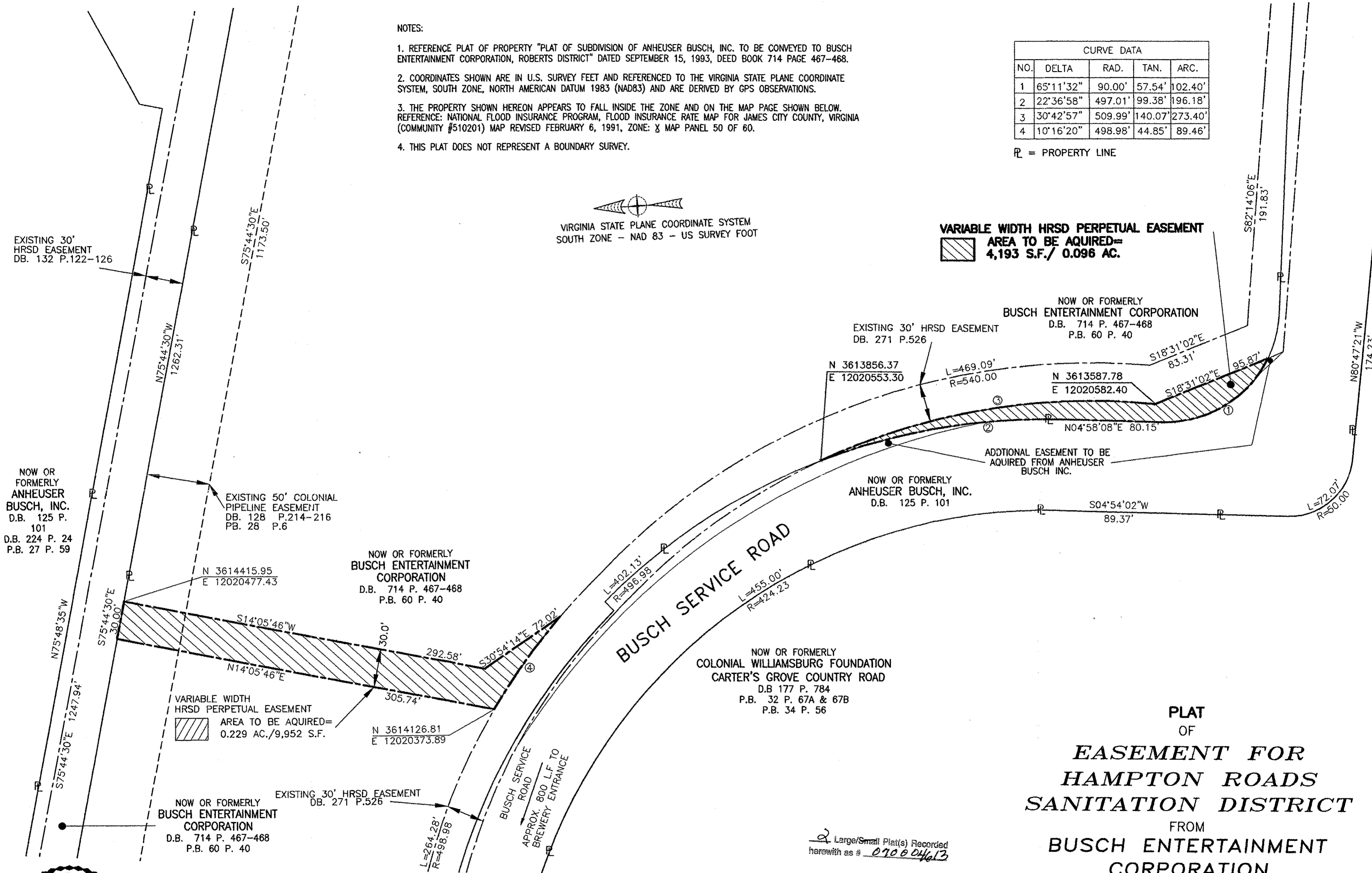
1. REFERENCE PLAT OF PROPERTY "PLAT OF SUBDIVISION OF ANHEUSER BUSCH, INC. TO BE CONVEYED TO BUSCH ENTERTAINMENT CORPORATION, ROBERTS DISTRICT" DATED SEPTEMBER 15, 1993, DEED BOOK 714 PAGE 467-468.
2. COORDINATES SHOWN ARE IN U.S. SURVEY FEET AND REFERENCED TO THE VIRGINIA STATE PLANE COORDINATE SYSTEM, SOUTH ZONE, NORTH AMERICAN DATUM 1983 (NAD83) AND ARE DERIVED BY GPS OBSERVATIONS.
3. THE PROPERTY SHOWN HEREON APPEARS TO FALL INSIDE THE ZONE AND ON THE MAP PAGE SHOWN BELOW. REFERENCE: NATIONAL FLOOD INSURANCE PROGRAM, FLOOD INSURANCE RATE MAP FOR JAMES CITY COUNTY, VIRGINIA (COMMUNITY #510201) MAP REVISED FEBRUARY 6, 1991, ZONE: X MAP PANEL 50 OF 60.
4. THIS PLAT DOES NOT REPRESENT A BOUNDARY SURVEY.

CURVE DATA				
NO.	DELTA	RAD.	TAN.	ARC.
1	65°11'32"	90.00'	57.54'	102.40'
2	22°36'58"	497.01'	99.38'	196.18'
3	30°42'57"	509.99'	140.07'	273.40'
4	10°16'20"	498.98'	44.85'	89.46'

PL = PROPERTY LINE

VIRGINIA STATE PLANE COORDINATE SYSTEM
SOUTH ZONE - NAD 83 - US SURVEY FOOT

VARIABLE WIDTH HRSD PERPETUAL EASEMENT
AREA TO BE ACQUIRED=
4,193 S.F./ 0.096 AC.

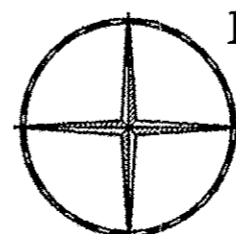


PLAT
OF
**EASEMENT FOR
HAMPTON ROADS
SANITATION DISTRICT**
FROM
**BUSCH ENTERTAINMENT
CORPORATION**

TAX PARCEL #5040100001 & 5140100009
D.B. 714 P. 467-468
P.B. 60 P.40
JAMES CITY COUNTY, VIRGINIA
SEPTEMBER 14, 2006

2 Large/Small Plat(s) Recorded
herewith as # 070004613

City of Williamsburg & County of James City
Circuit Court: This PLAT was recorded on
16 February 2007
at 12:35 AM/PM, P.B. PG
DOCUMENT # 070004613
BETSY B. WOOLRIDGE, CLERK
Betsy B. Woolridge Clerk



Hayden Frye and Associates, Inc.
Land Surveyors
612 NEVAN ROAD, SUITE 108
VIRGINIA BEACH, VA, 23451
PH: (757) 491-7228 FX: (757) 491-7229

0 25 50 100 150 FEET
GRAPHIC SCALE: 1" = 50'

