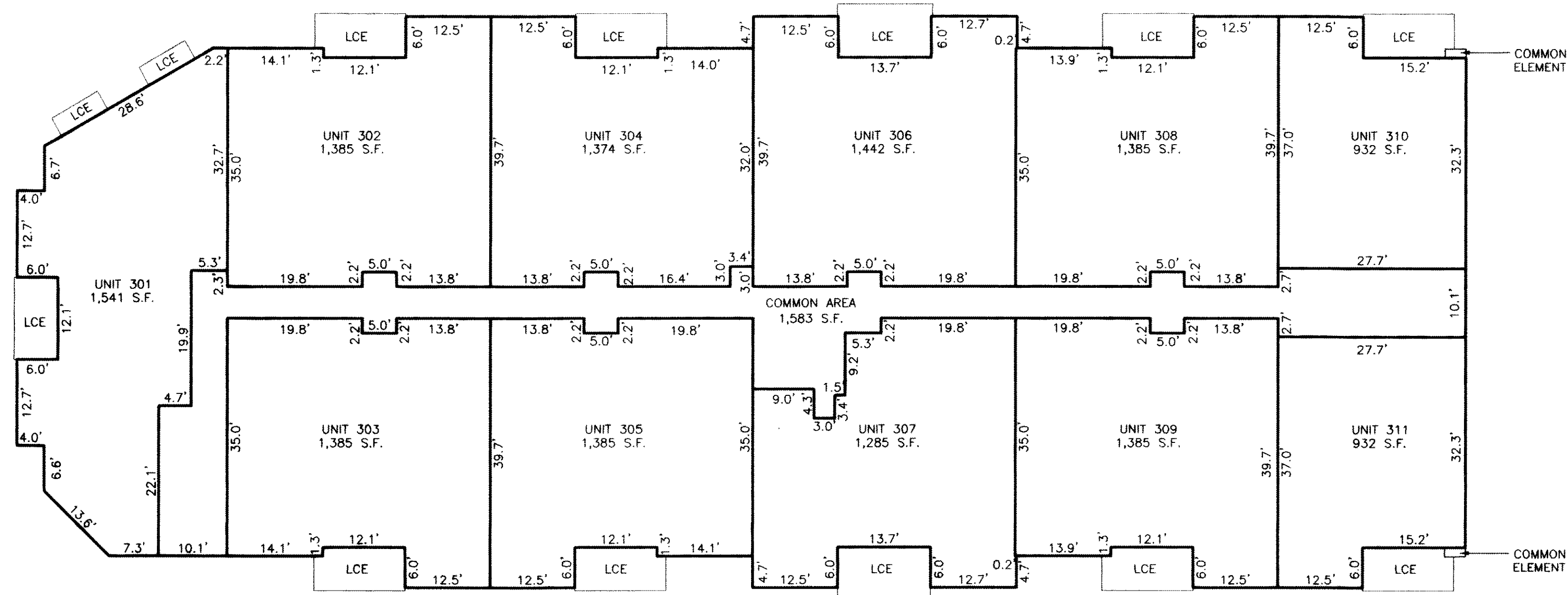
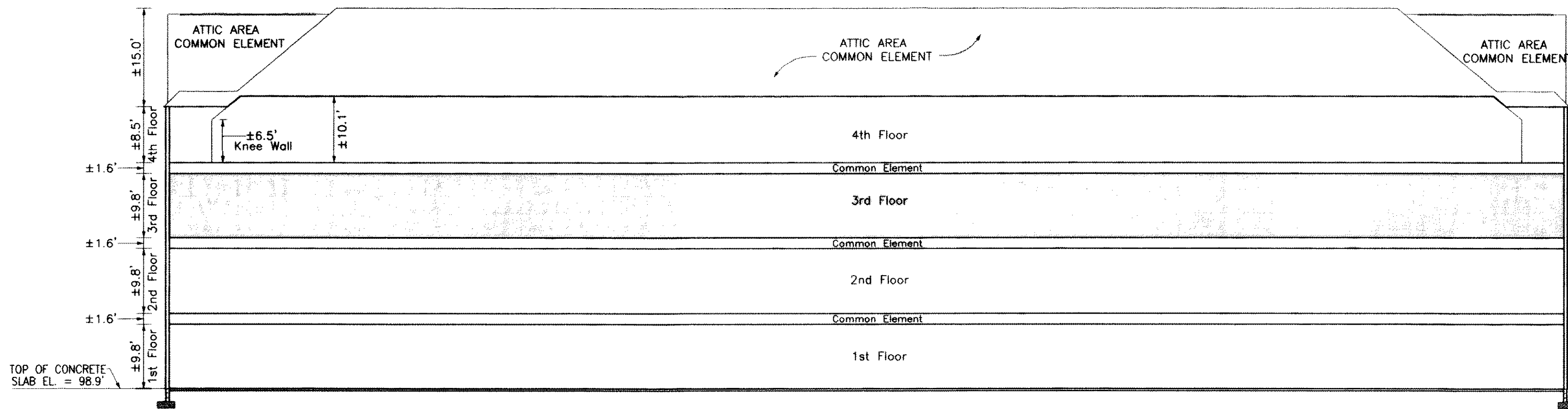


# 070004489

LEGEND  
LCE = LIMITED COMMON ELEMENT



THIRD FLOOR PLAN



SECTION "A" FLOOR ELEVATIONS

**BENNINGTON ON THE PARK  
A CONDOMINIUM**

NEW TOWN, SECTION 2 & 4  
BLOCK 8, PARCEL E  
JAMES CITY COUNTY, VIRGINIA

DATE: 02-05-07 JOB# 05-838

SHEET 4 OF 5

**SURVEYOR'S CERTIFICATE**

I CERTIFY THAT THESE PLANS ARE ACCURATE AND COMPLY WITH THE PROVISIONS OF SECTION 55-79.58(B) OF THE CODE OF VIRGINIA 1950 AS AMENDED AND THAT ALL UNITS DEPICTED HEREON HAVE BEEN SUBSTANTIALLY COMPLETED.

*Matthew H. Connolly*  
MATTHEW H. CONNOLLY

2/05/2007  
DATE



**AREA BREAKDOWN**

LIMITED COMMON ELEMENT (LCE) = ±844 S.F.  
COMMON ELEMENT(BUILDING) = ±8 S.F.  
COMMON AREA = 1,583 S.F.  
RESIDENTIAL UNITS = 14,431 S.F.

5 Large/Small (Plus) Recorded  
herewith as # 070004489

City of Williamsburg & County of James City  
Circuit Court. This PLAT was recorded on  
15 February 2007  
at 3:23 AM/PM, PG  
DOCUMENT # 070004489  
BETSY B. WOOLRIDGE, CLERK  
*Betsy B. Woolridge* Clerk

**LandTech**  
Resources, Inc.  
Surveying • Mapping • Land Design  
5810-F Mooretown Road, Williamsburg, VA 23188  
Phone: (757) 565-1677 Fax: (757) 565-0782  
web: landtechresources.com