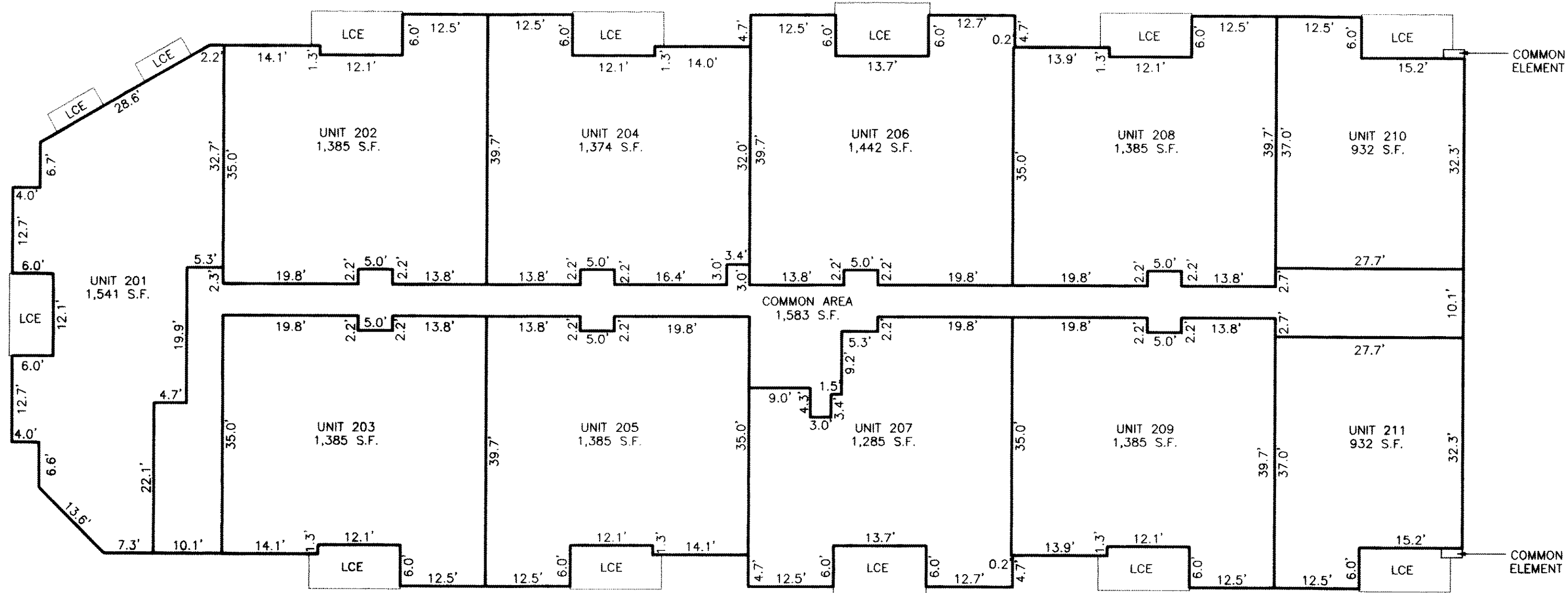
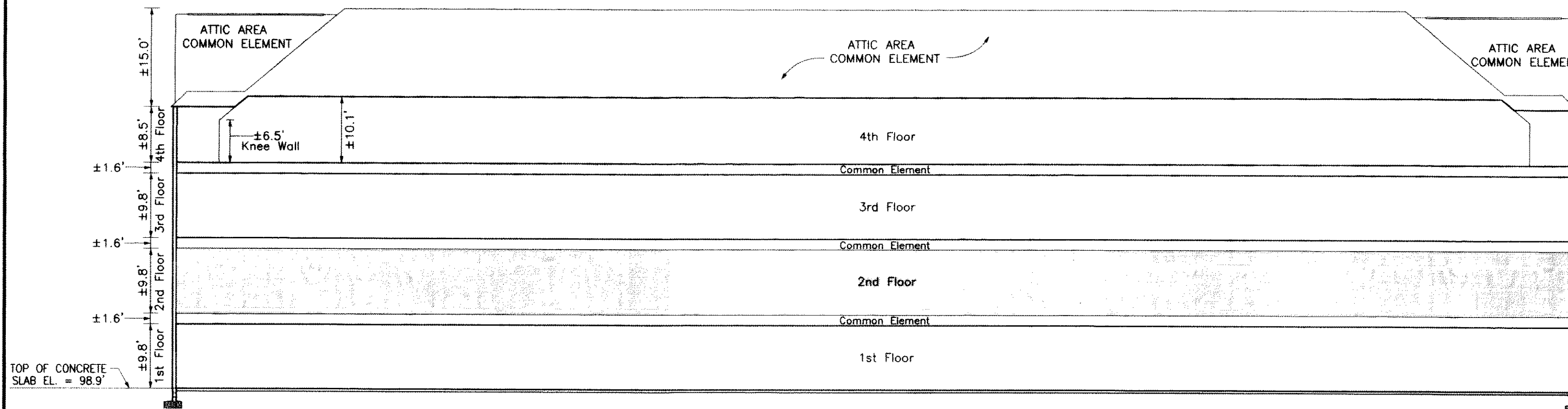


#070004489

LEGEND
LCE = LIMITED COMMON ELEMENT



SECOND FLOOR PLAN



SECTION "A" FLOOR ELEVATIONS

SURVEYOR'S CERTIFICATE

I CERTIFY THAT THESE PLANS ARE ACCURATE AND COMPLY WITH THE PROVISIONS OF SECTION 55-79.58(B) OF THE CODE OF VIRGINIA 1950 AS AMENDED AND THAT ALL UNITS DEPICTED HEREON HAVE BEEN SUBSTANTIALLY COMPLETED.

Matthew H. Connolly
MATTHEW H. CONNOLLY

2/05/2007
DATE



AREA BREAKDOWN

LIMITED COMMON ELEMENT (LCE) = ±844 S.F.
COMMON ELEMENT(BUILDING) = ±8 S.F.
COMMON AREA = 1,583 S.F.
RESIDENTIAL UNITS = 14,431 S.F.

City of Williamsburg & County of James City
Circuit Court: This PLAT was recorded on
15 February 2007
at 3:23 AM PM, PG. 1
DOCUMENT # 070004489
BETSY B. WOOLRIDGE, CLERK
Betsy B. Woolridge Clerk

5 Large/Small Plates Recorded
herein as # 070004489

**BENNINGTON ON THE PARK
A CONDOMINIUM**

NEW TOWN, SECTION 2 & 4
BLOCK 8, PARCEL E
JAMES CITY COUNTY, VIRGINIA

DATE: 02-05-07 JOB# 05-838

SHEET 3 OF 5

LandTech
Resources, Inc.
Surveying • Mapping • Land Design
5810-F Mooretown Road, Williamsburg, VA 23188
Phone: (757) 565-1677 Fax: (757) 565-0782
web: landtechresources.com