

#070002549

DENOTES AREA OF NATURAL OPEN SPACE

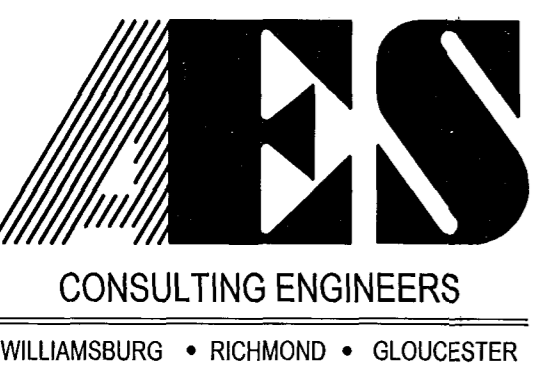
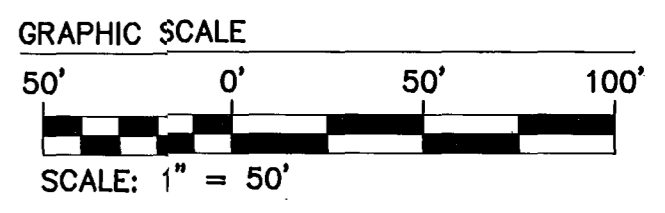
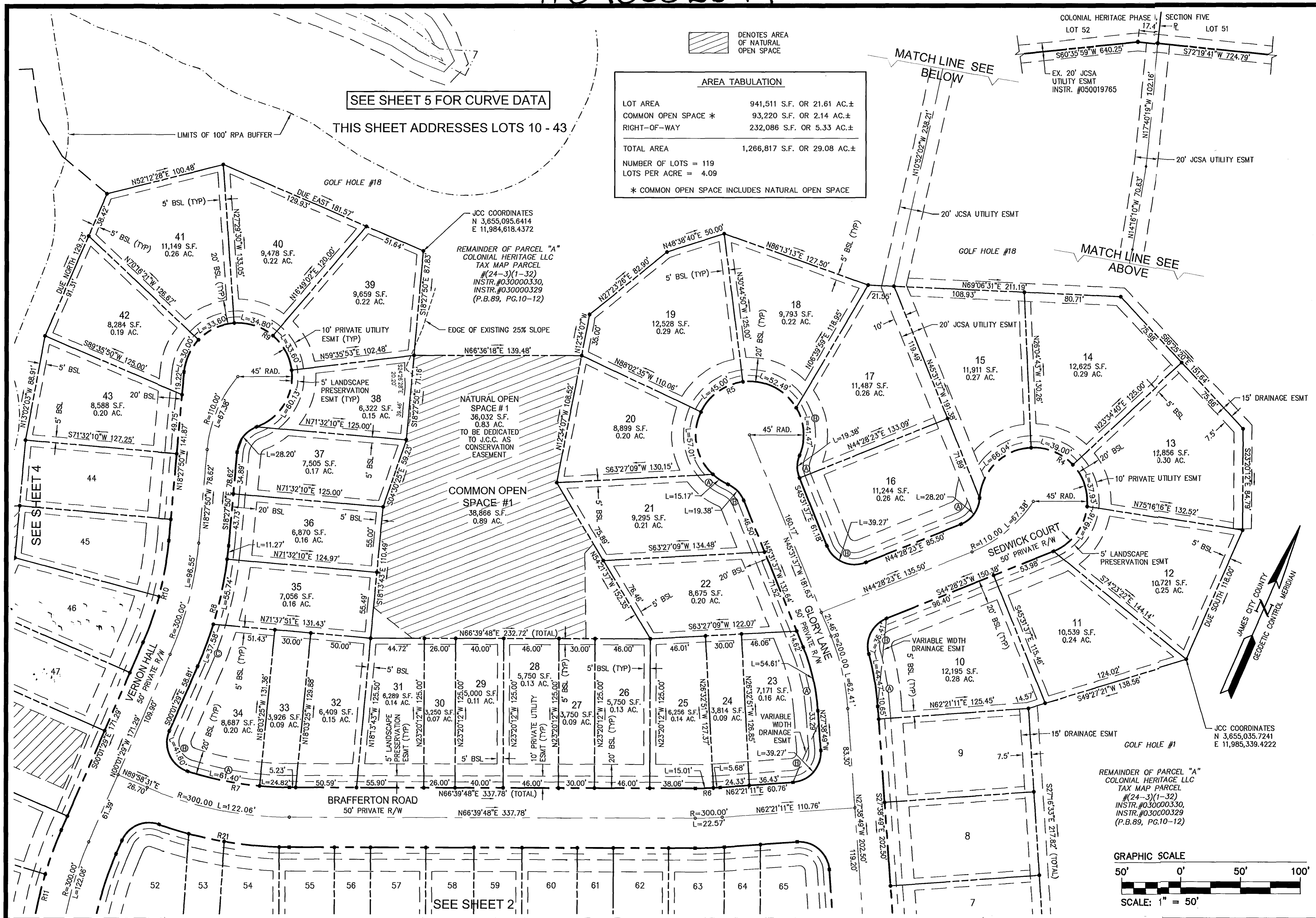
SEE SHEET 5 FOR CURVE DATA

THIS SHEET ADDRESSES LOTS 10 - 43

AREA TABULATION

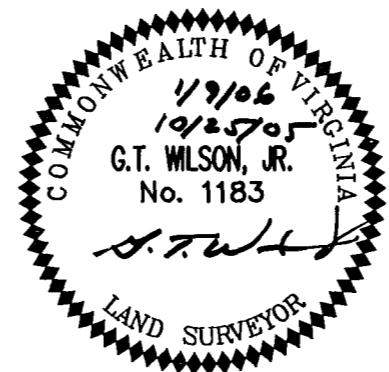
LOT AREA	941,511 S.F. OR 21.61 AC.±
COMMON OPEN SPACE *	93,220 S.F. OR 2.14 AC.±
RIGHT-OF-WAY	232,086 S.F. OR 5.33 AC.±
TOTAL AREA	1,266,817 S.F. OR 29.08 AC.±
NUMBER OF LOTS = 119	
LOTS PER ACRE = 4.09	

\* COMMON OPEN SPACE INCLUDES NATURAL OPEN SPACE



5248 Olde Towne Road, Suite 1  
Williamsburg, Virginia 23188  
(757) 253-0040  
Fax (757) 220-8994  
Large/Small Plat(s) Recorded  
herewith as # 070002549

PLAT OF SUBDIVISION  
**COLONIAL HERITAGE**  
PHASE III, SECTION 1 LOTS 1-119  
PREPARED FOR COLONIAL HERITAGE LLC  
STONEHOUSE DISTRICT JAMES CITY COUNTY VIRGINIA



City of Williamsburg & County of James City	
Circuit Court: This PLAT was recorded on	
26 February 2007	
at 3:20 AM/PM, PG. -	
DOCUMENT # 070002549	
BETSY B. WOOLRIDGE, CLERK	
Betsy B. Woolridge Clerk	
No.	DATE
1	1/9/06
REVISED PER J.C.C. COMMENT LETTERS DATED 11/23/05 & 1/9/06	
BY	AWT

Designed	Drawn
HWP	AWT
Scale	Date
1"=50'	10/25/05
Project No.	
8881-31	
Drawing No.	
3 of 5	