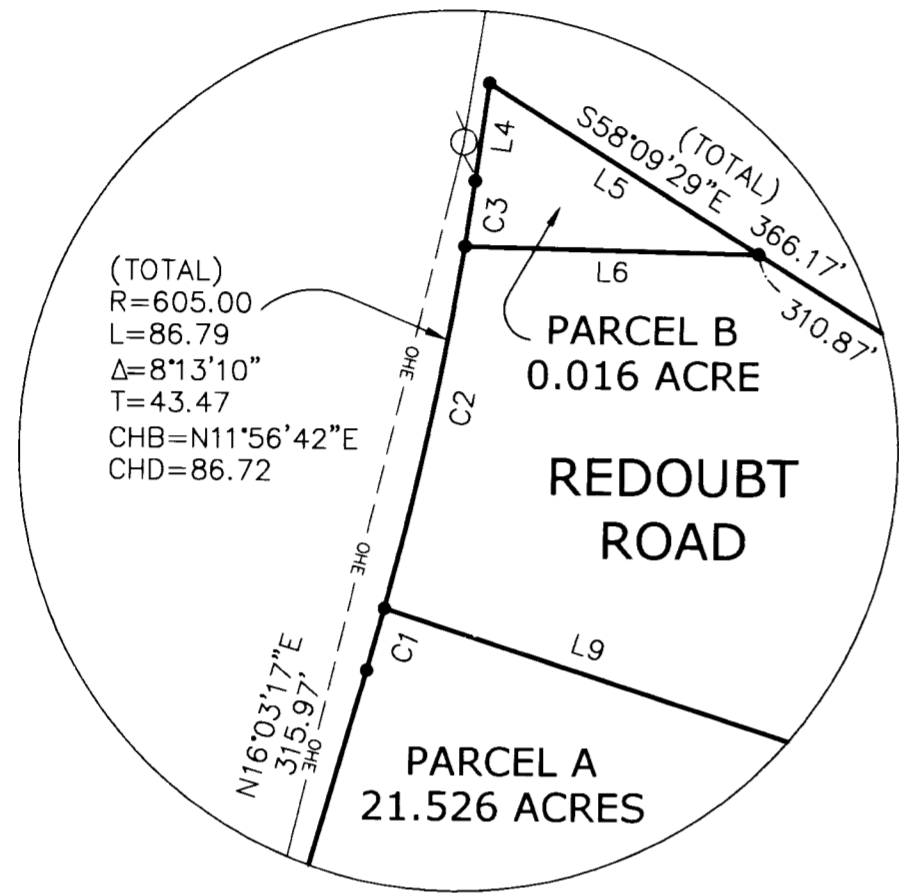
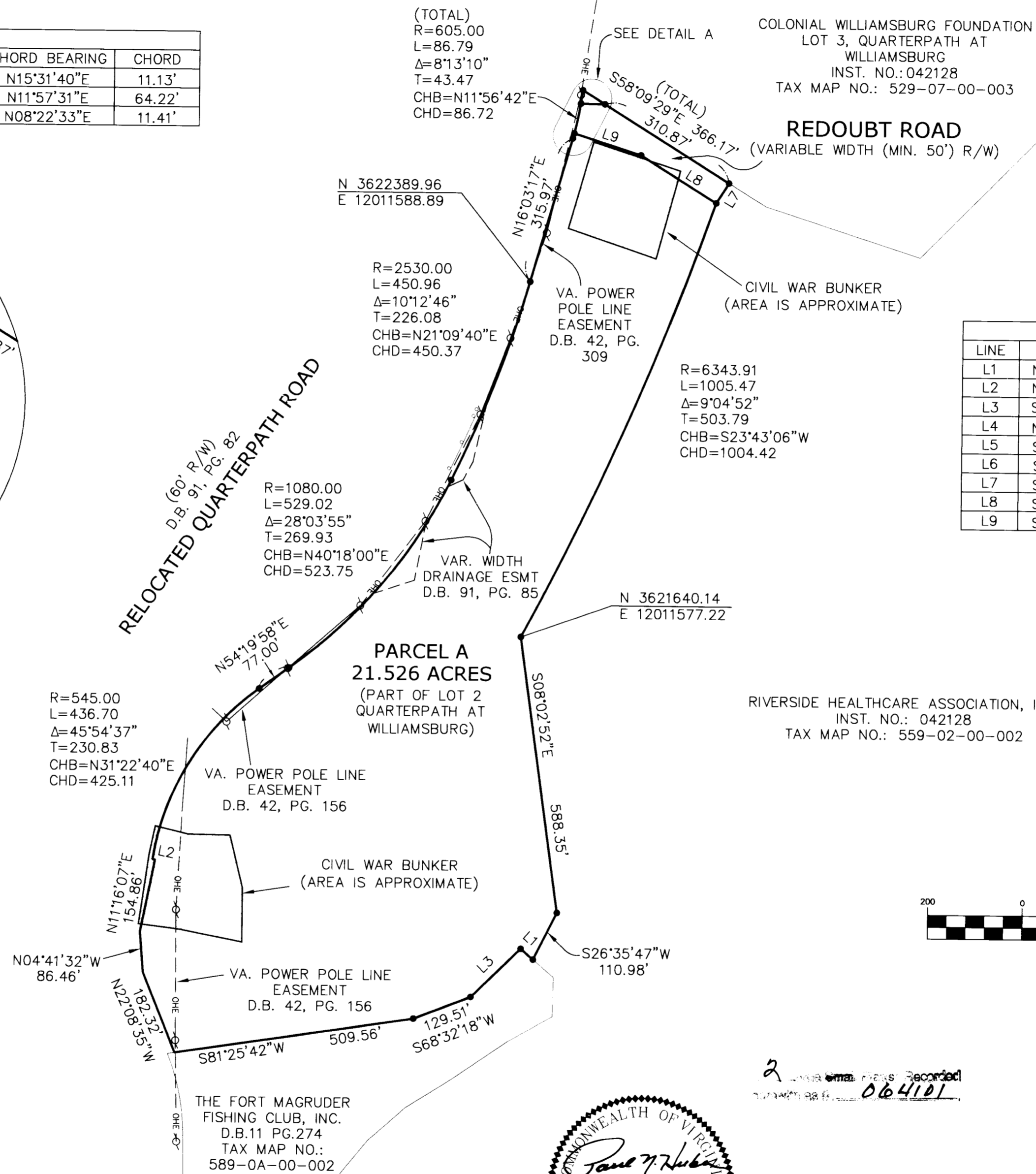


#064101

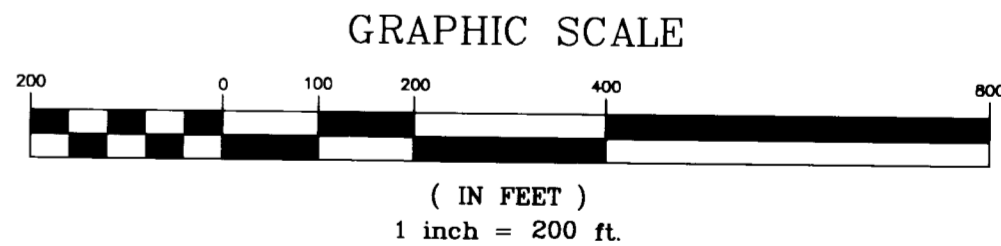
CURVE TABLE						
CURVE	RADIUS	LENGTH	TANGENT	DELTA	CHORD BEARING	CHORD
C1	605.00'	11.13'	5.56'	1°03'14"	N15°31'40"E	11.13'
C2	605.00'	64.25'	32.15'	6°05'05"	N11°57'31"E	64.22'
C3	605.00'	11.41'	5.71'	1°04'51"	N08°22'33"E	11.41'



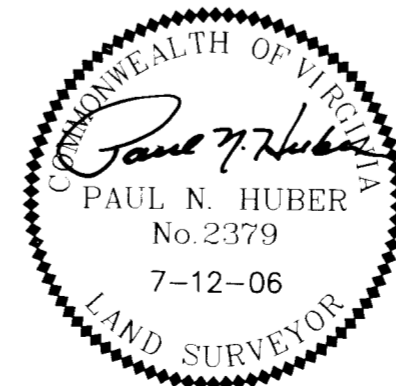
DETAIL A
(NO SCALE)



LINE TABLE		
LINE	BEARING	DISTANCE
L1	N49°14'35"W	34.32'
L2	N81°34'36"W	5.20'
L3	S45°45'25"W	146.80'
L4	N07°50'09"E	17.09'
L5	S58°09'29"E	55.30'
L6	S88°55'31"E	50.98'
L7	S31°50'31"W	50.00'
L8	S58°09'29"E	188.58'
L9	S72°20'45"E	148.79'



City of Williamsburg & County of James City
Circuit Court. This PLAT was recorded on
29 November 2006
at 3:42 AM/PM. PG.
DOCUMENT # 064101
BETSY B. WOOLRIDGE, CLERK
Betsy B. Woolridge Clerk



REDOUBT PARK

CITY OF WILLIAMSBURG, VIRGINIA
DATE: JULY 12, 2006 SCALE: 1"=200'

THIS DRAWING PREPARED AT THE CORPORATE OFFICE
 1001 Boulders Parkway, Suite 300 | Richmond, VA 23225
 TEL 804.260.6500 FAX 804.560.1016 www.timmons.com
Timmons
 Infrastructure Residential Site Development