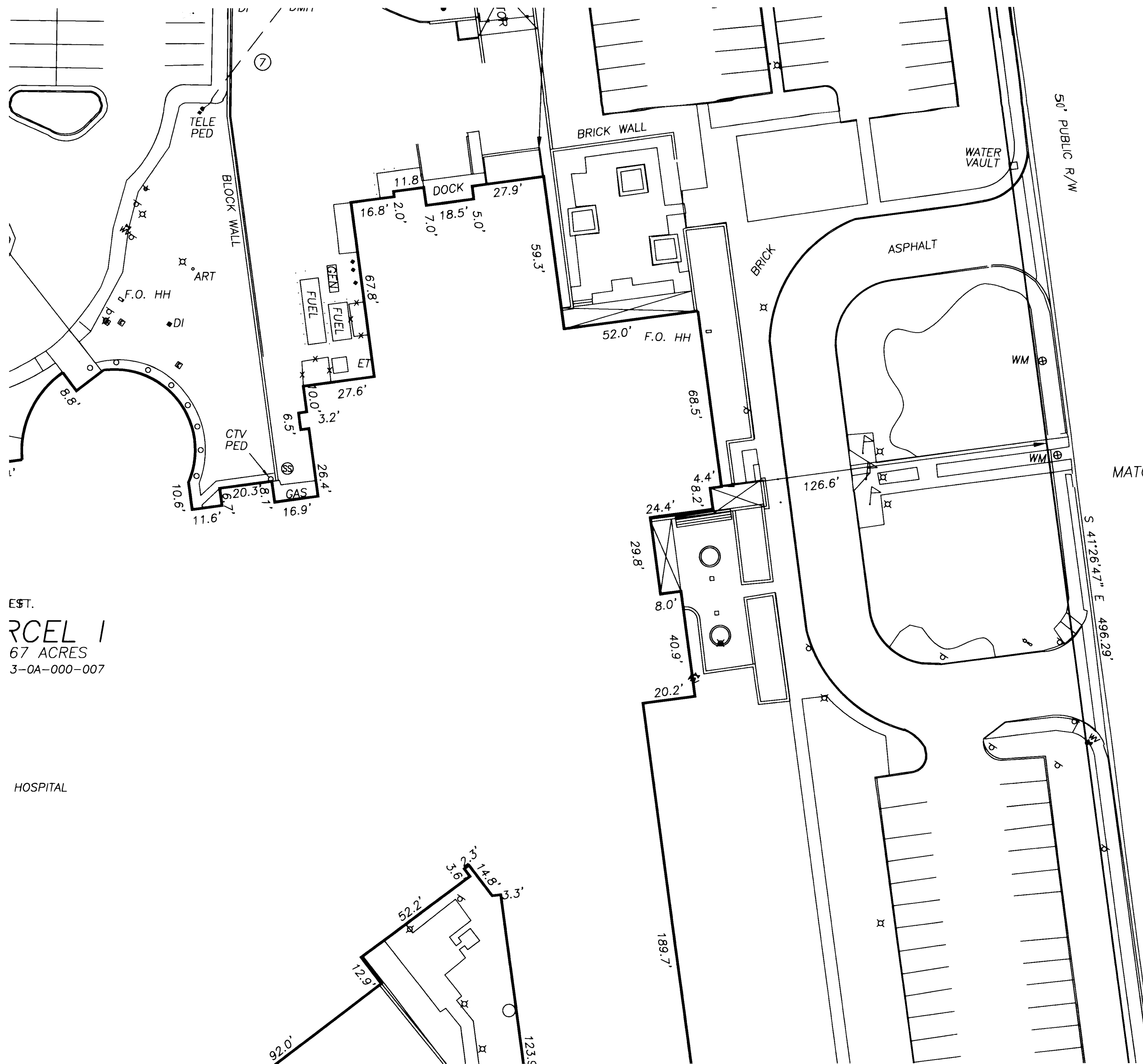


#063941

R=472.50'
Δ=06°01'49"
C LEN=49.71'
BRG=N 35°59'50" W

L=31.42'
R=20.00'
Δ=90°00'00"
C LEN=28.28'
BRG=N 12°03'03" E

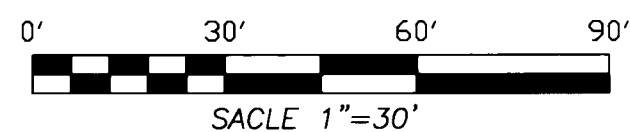
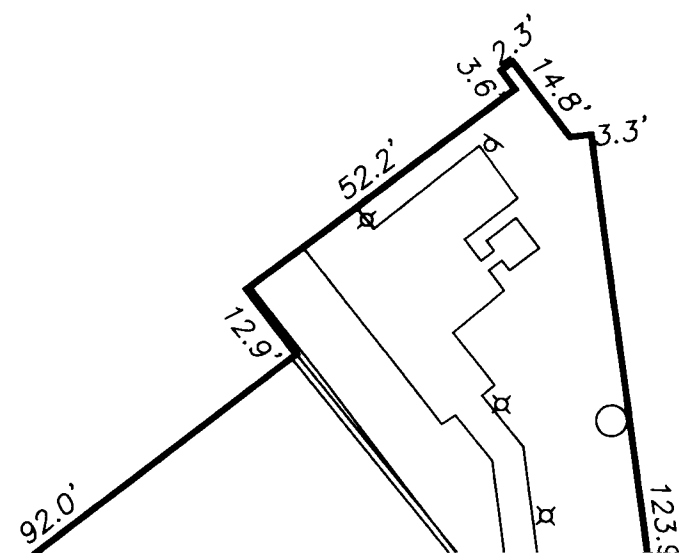
Ⓐ WILLIAMSBURG IMPROVEMENTS, LLC
INST. 010606
T.M. 433-01-00-001&2



MOUNT VERNON AVE.
50' PUBLIC R/W

EST.
RCEL I
67 ACRES
3-0A-000-007

HOSPITAL



11
063941

City of Williamsburg & County of James City
Circuit Court. This PLAT was recorded on
8 November 2006
at 12:14 AM PM, PG
DOCUMENT # 063941
BETSY B. WOOLRIDGE, CLERK
Betsy B. Woolridge Clerk

ALTA / ACSM LAND TITLE SURVEY OF SENTARA WILLIAMSBURG COMMUNITY HOSPITAL

CITY OF WILLIAMSBURG ~ VIRGINIA
MARCH 3, 2006
REVISED AUG. 20, 2006