

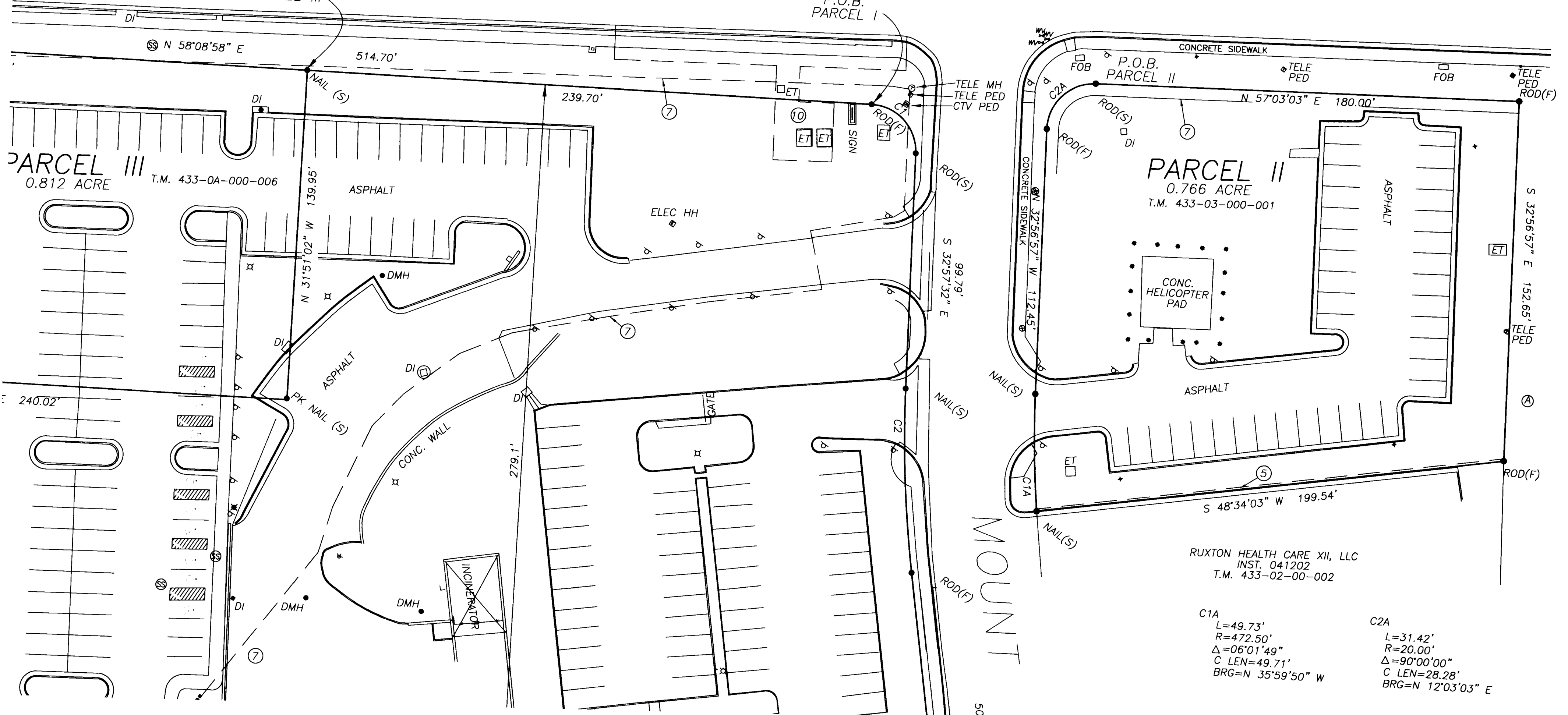
#063941

MONTICELLO AVE.

60' PUBLIC R/W

P.O.B. PARCEL III

P.O.B. PARCEL I



PARCEL III
0.812 ACRE
T.M. 433-0A-000-006

PARCEL II
0.766 ACRE
T.M. 433-03-000-001

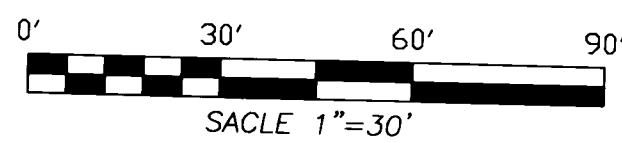
RUXTON HEALTH CARE XII, LLC
INST. 041202
T.M. 433-02-00-002

C1A
L=49.73'
R=472.50'
Δ=06°01'49"
C LEN=49.71'
BRG=N 35°59'50" W

C2A
L=31.42'
R=20.00'
Δ=90°00'00"
C LEN=28.28'
BRG=N 12°03'03" E

ALTA / ACSM LAND TITLE SURVEY
OF
SENTARA WILLIAMSBURG
COMMUNITY HOSPITAL

CITY OF WILLIAMSBURG ~ VIRGINIA
MARCH 3, 2006
REVISED AUG. 20, 2006



11
063941

City of Williamsburg & County of James City
Circuit Court. This PLAT was recorded on
8 November 2006
at 12:14 AM/PM PB PG
DOCUMENT # 063941
BETSY B. WOOLRIDGE, CLERK
Betsy B. Woolridge Clerk