

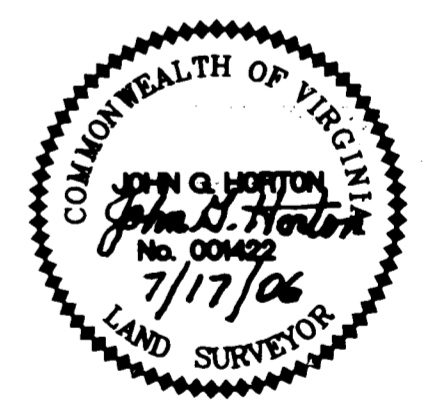
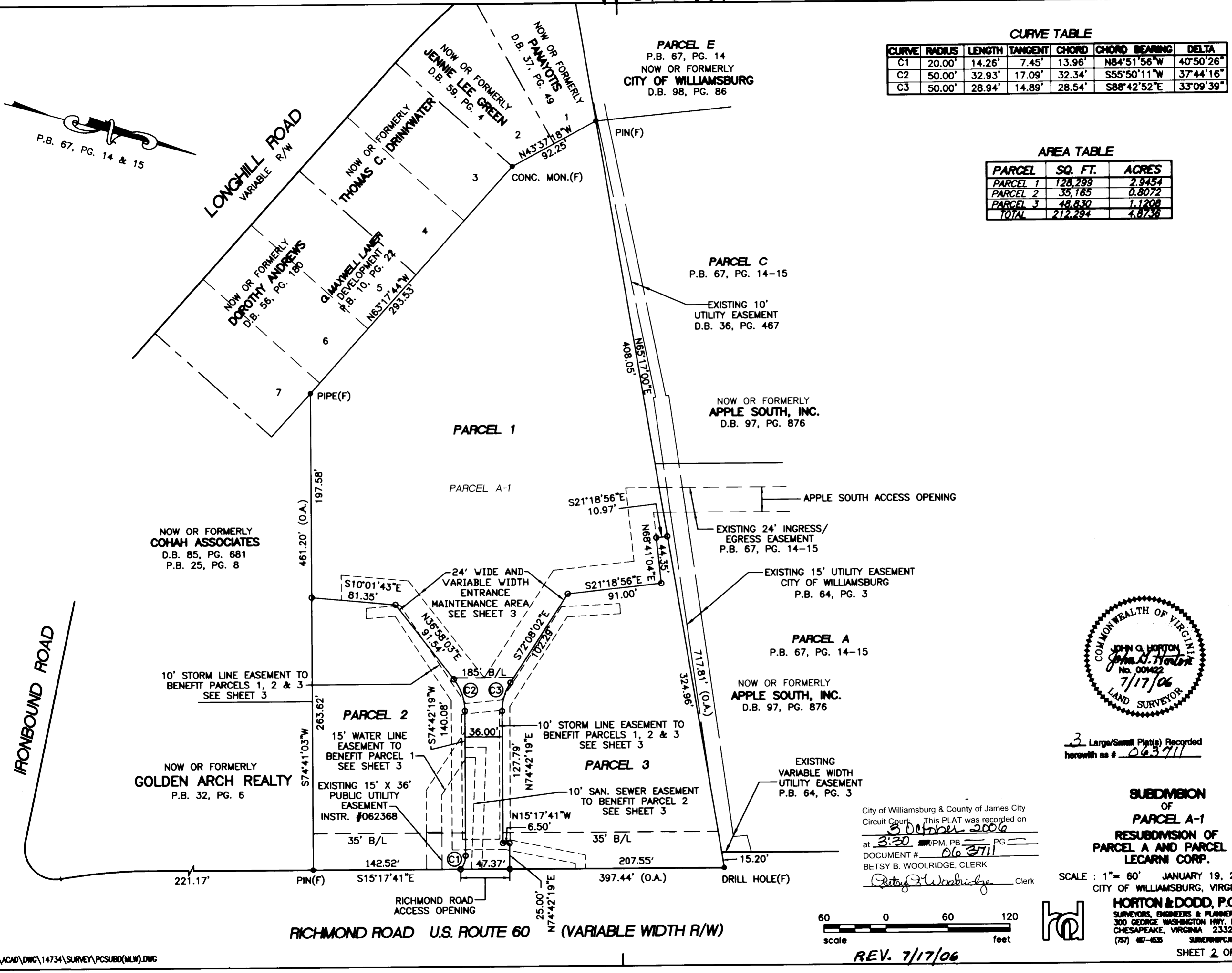
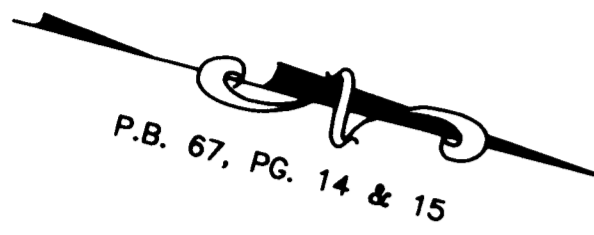
#063711

CURVE TABLE

CURVE	RADIUS	LENGTH	TANGENT	CHORD	CHORD BEARING	DELTA
C1	20.00'	14.26'	7.45'	13.96'	N84°51'56"W	40°50'26"
C2	50.00'	32.93'	17.09'	32.34'	S55°50'11"W	37°44'16"
C3	50.00'	28.94'	14.89'	28.54'	S88°42'52"E	33°09'39"

AREA TABLE

PARCEL	SQ. FT.	ACRES
PARCEL 1	128,299	2.9454
PARCEL 2	35,165	0.8072
PARCEL 3	48,830	1.1208
TOTAL	212,294	4.8736



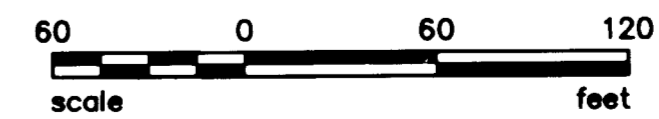
3 Large/Small Plat(s) Recorded
herewith as # 063711

SUBMISSION
OF
PARCEL A-1
RESUBMISSION OF
PARCEL A AND PARCEL B
LECARNI CORP.

City of Williamsburg & County of James City
Circuit Court. This PLAT was recorded on
3 October 2006
at 3:30 PM. PB PG
DOCUMENT # 063711
BETSY B. WOOLRIDGE, CLERK
Betsy B. Woolridge Clerk

SCALE : 1" = 60' JANUARY 19, 2006
CITY OF WILLIAMSBURG, VIRGINIA

HORTON & DODD, P.C.
SURVEYORS, ENGINEERS & PLANNERS
300 GEORGE WASHINGTON HWY. N.
CHESAPEAKE, VIRGINIA 23323
(757) 467-6535 SURVEY@HPC.NET



REV. 7/17/06



F:\acad\dwg\14734\SURVEY\PCSUBD\MLW.DWG Model: 7/17/2006 4:32:02 PM, 1.60, MLW