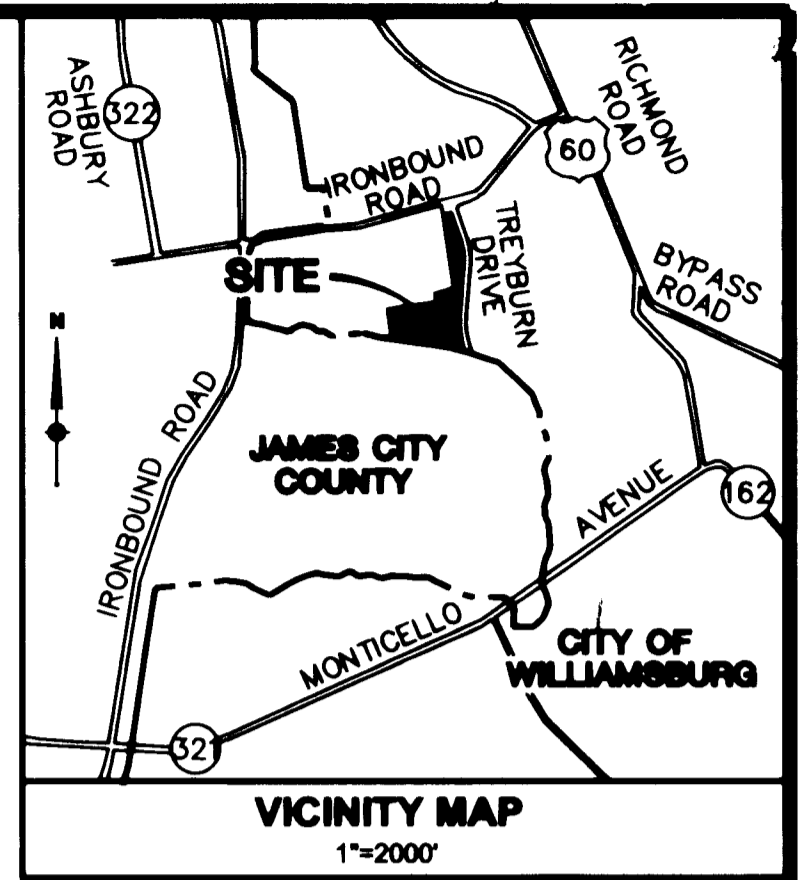
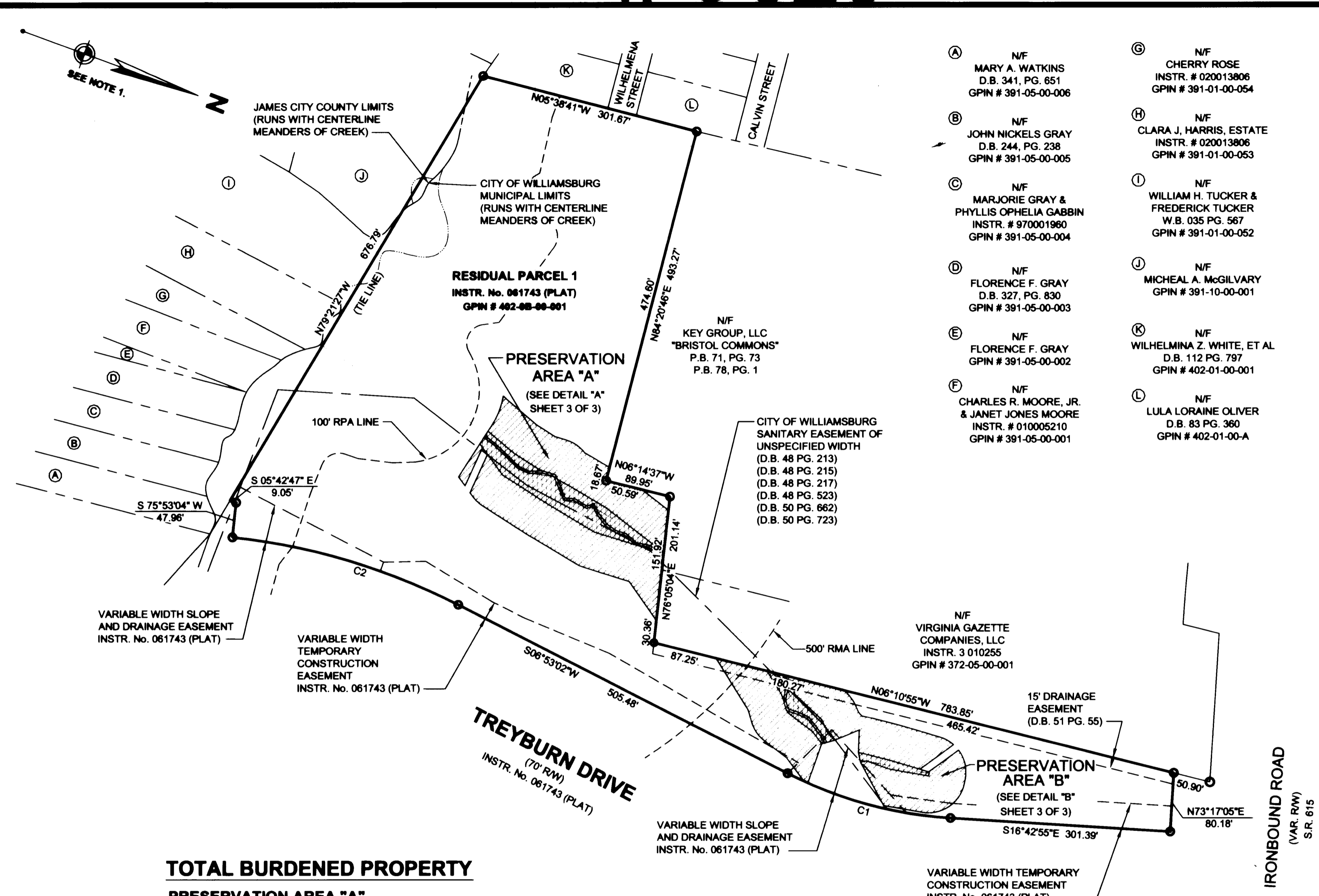


#062546



- NOTES:**
- BEARINGS AND DISTANCES SHOWN HEREON ARE BASED ON VIRGINIA STATE PLANE COORDINATE SYSTEM, SOUTH ZONE, NAD 83, CITY OF WILLIAMSBURG CONTROL NETWORK.
 - THE MUNICIPAL LINE BETWEEN THE CITY OF WILLIAMSBURG AND JAMES CITY COUNTY IS THE CENTERLINE MEANDERS OF THE CREEK; TIE LINES ARE DEPICTED HEREON.
 - BUFFER AREAS, JURISDICTIONAL WETLANDS AND STREAM CHANNEL AREAS BASED ON DRAWING ENTITLED "JURISDICTIONAL AREA IMPACTS MAP, HIGH STREET, CITY OF WILLIAMSBURG, VIRGINIA" DATED JUNE 24, 2005, REVISED SEPTEMBER 29, 2005, PREPARED BY WILLIAMSBURG ENVIRONMENTAL GROUP, INC.



- (A) N/F MARY A. WATKINS D.B. 341, PG. 651 GPIN # 391-05-00-006
- (B) N/F JOHN NICKELS GRAY D.B. 244, PG. 238 GPIN # 391-05-00-005
- (C) N/F MARJORIE GRAY & PHYLLIS OPHELIA GABBIN INSTR. # 970001960 GPIN # 391-05-00-004
- (D) N/F FLORENCE F. GRAY D.B. 327, PG. 830 GPIN # 391-05-00-003
- (E) N/F FLORENCE F. GRAY GPIN # 391-05-00-002
- (F) N/F CHARLES R. MOORE, JR. & JANET JONES MOORE INSTR. # 010005210 GPIN # 391-05-00-001
- (G) N/F CHERRY ROSE INSTR. # 020013806 GPIN # 391-01-00-054
- (H) N/F CLARA J. HARRIS, ESTATE INSTR. # 020013806 GPIN # 391-01-00-053
- (I) N/F WILLIAM H. TUCKER & FREDERICK TUCKER W.B. 035 PG. 567 GPIN # 391-01-00-052
- (J) N/F MICHEAL A. MCGILVARY GPIN # 391-10-00-001
- (K) N/F WILHELMINA Z. WHITE, ET AL D.B. 112 PG. 797 GPIN # 402-01-00-001
- (L) N/F LULA LORRAINE OLIVER D.B. 83 PG. 360 GPIN # 402-01-00-00A

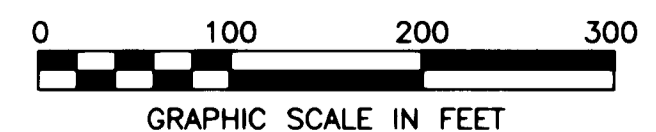
TOTAL BURDENED PROPERTY

PRESERVATION AREA "A"	
BUFFER AREA	= 0.67 ACRES
JURISDICTIONAL WETLANDS AND STREAM CHANNEL	= 0.20 ACRES
PRESERVATION AREA	= 0.87 ACRES

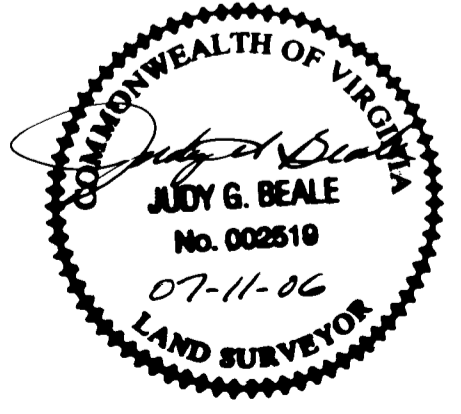
PRESERVATION AREA "B"	
BUFFER AREA	= 0.58 ACRES
JURISDICTIONAL WETLANDS AND STREAM CHANNEL	= 0.08 ACRES
PRESERVATION AREA	= 0.66 ACRES

LEGEND

- IRON PIPE FOUND
- IRON PIN FOUND
- - - C/L DITCH
- - - C/L CREEK
- [Hatched Box] PRESERVATION AREA
- [Dotted Box] JURISDICTIONAL WETLANDS AND STREAM CHANNEL
- [White Box] BUFFER AREA



VIRGINIA:
 IN THE CLERK'S OFFICE OF THE CIRCUIT COURT OF THE CITY OF WILLIAMSBURG, VIRGINIA ON THIS 17 DAY OF July, 2006, THIS PLAT WAS RECEIVED AND ADMITTED TO RECORD IN MAP BOOK AT PAGE AT 12:24 PM
 TESTE: Betsy B. Woolridge CLERK
By Claudia M. Beale, Esq.



City of Williamsburg & County of James City Circuit Court: This PLAT was recorded on 17 July 2006 at 12:24 AM/PM, PB PG DOCUMENT # 062546 BETSY B. WOOLRIDGE, CLERK
Betsy B. Woolridge Clerk

2 Large/Small Plat(s) Recorded
 Search as # 062546

EXHIBIT OF PRESERVATION AREAS
 PER DECLARATION OF RESTRICTIONS
 PROPERTY OF
CITY OF WILLIAMSBURG, VA
 (D.B. 121 PG. 321, INSTR. No. 980769, INSTR. No. 031671 & INSTR. No. 040340)
 WILLIAMSBURG, VIRGINIA

DES. N/A	JOB NO. 62896.04
DRN. RDA	SCALE: 1"=100'
CKD. JGB	DATE 7-06-06

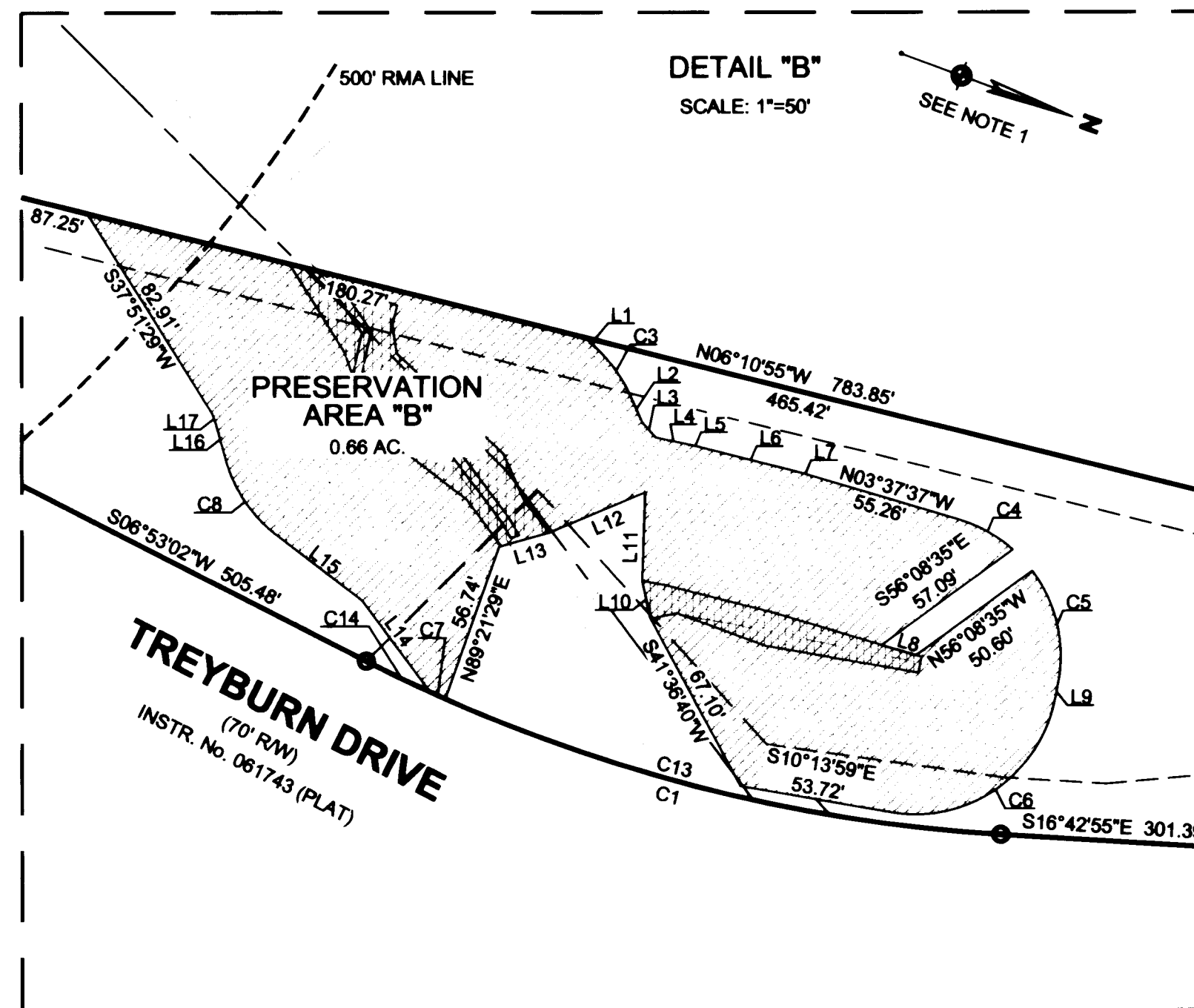
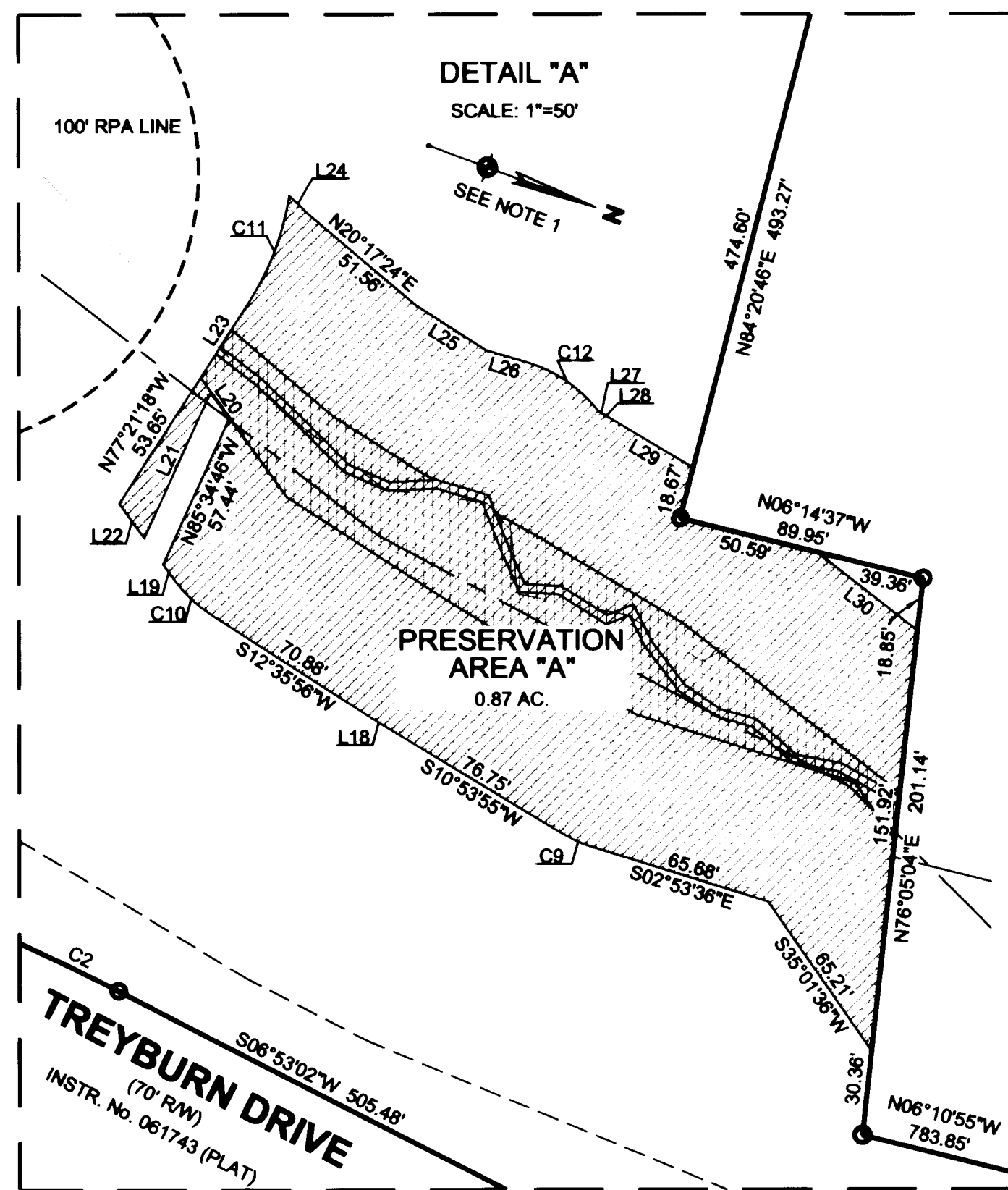
WOOLPERT, INC.
 415 PORT CENTRE PARKWAY
 SUITE 101
 PORTSMOUTH, VA 23704-4924
 TEL: 757.399.6882 FAX: 757.399.6869

SHEET NO. 1 OF 2
 FILE NO. Wetlands ease.dwg

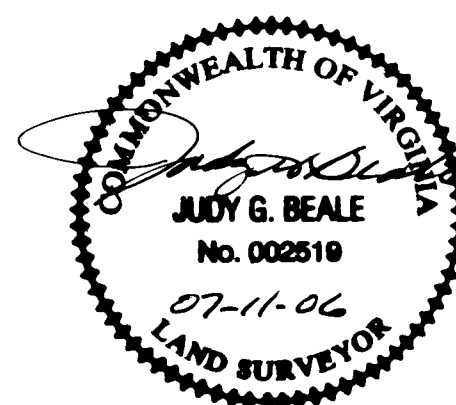
#062546

CURVE TABLE		
CURVE	RADIUS	LENGTH
C1	565.00	232.72'
C2	885.00	324.36'
C3	50.00	19.93'
C4	50.00	21.84'
C5	50.00	42.00'
C6	50.00	77.39'
C7	565.00	5.80'
C8	50.00	35.79'
C9	50.00	12.04'
C10	50.00	18.59'
C11	100.00	41.87'
C12	50.00	32.07'
C13	565.00	201.96'
C14	565.00	24.96'

LINE TABLE		
LINE	BEARING	LENGTH
L1	N22°59'30"E	5.99'
L2	N45°49'41"E	10.62'
L3	N28°02'11"E	6.92'
L4	N08°20'00"W	12.85'
L5	N07°26'36"W	2.69'
L6	N05°54'12"W	37.63'
L7	N04°45'54"W	1.99'
L8	N03°37'37"W	12.60'
L9	N81°05'07"E	5.71'
L10	S58°03'22"W	13.25'
L11	S71°47'26"W	30.97'
L12	S42°57'23"E	36.42'
L13	S35°40'28"E	18.42'
L14	S33°06'08"W	40.15'
L15	S17°17'13"W	36.10'
L16	S54°15'36"W	11.65'
L17	S50°42'44"W	3.47'
L18	S11°44'55"W	1.48'
L19	S33°53'57"W	6.77'
L20	S33°53'57"W	11.49'
L21	S85°34'46"E	57.44'
L22	S33°53'57"W	15.24'
L23	N77°21'18"W	32.09'
L24	N24°23'35"E	8.64'
L25	N12°24'32"E	30.13'
L26	N03°51'13"W	15.37'
L27	N08°21'18"E	2.02'
L28	N09°26'45"E	1.90'
L29	N10°31'56"E	35.40'
L30	N17°48'03"E	45.85'

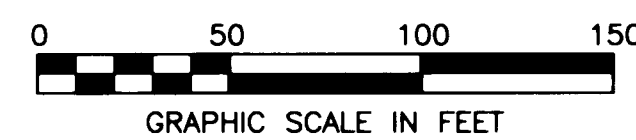


City of Williamsburg & County of James City
Circuit Court: This PLAT was recorded on
17 July 2006
at 12:24 AM/PM. PG. 1
DOCUMENT # 062546
BETSY B. WOOLRIDGE, CLERK
Betsy B. Woolridge Clerk



LEGEND

- IRON PIPE FOUND
- IRON PIN FOUND
- CAL DITCH
- CAL CREEK
- ▨ PRESERVATION AREA
- ▨ JURISDICTIONAL WETLANDS AND STREAM CHANNEL
- ▨ BUFFER AREA



2 Large/Small Plat(s) Recorded
herein as # 062546

SEE SHEET 1 OF 2 NOTES & CERTIFICATIONS

EXHIBIT
OF
PRESERVATION AREAS
PER DECLARATION OF RESTRICTIONS
PROPERTY OF
CITY OF WILLIAMSBURG, VA
(D.B. 121 PG. 321, INSTR. No. 980769, INSTR. No. 031671 & INSTR. No. 040340)
WILLIAMSBURG, VIRGINIA

	WOOLPERT, INC.	DES. N/A	JOB NO. 62896.04
	415 PORT CENTRE PARKWAY	DRN. RDA	SCALE 1"=50'
	SUITE 101	CKD. JGB	DATE 7-06-06
PORTSMOUTH, VA 23704-4924		SHEET NO. <u>2</u> OF <u>2</u>	
TEL: 757.399.6882 FAX: 757.399.6869		FILE NO. <u>wetlands ease.dwg</u>	

VIRGINIA:

IN THE CLERK'S OFFICE OF THE CIRCUIT COURT OF THE CITY OF WILLIAMSBURG, VIRGINIA ON THIS 17 DAY OF July, 2006, THIS PLAT WAS RECEIVED AND ADMITTED TO RECORD IN MAP BOOK AT PAGE AT 12:24 P.M.

TESTE: *Betsy B. Woolridge* CLERK
Betsy B. Woolridge Clerk