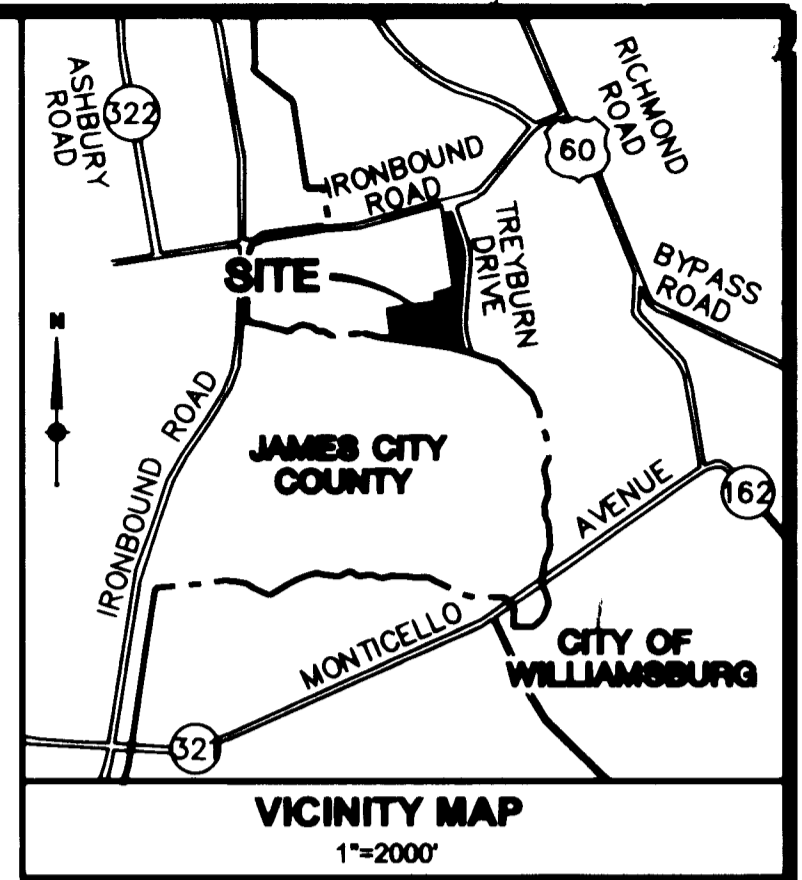
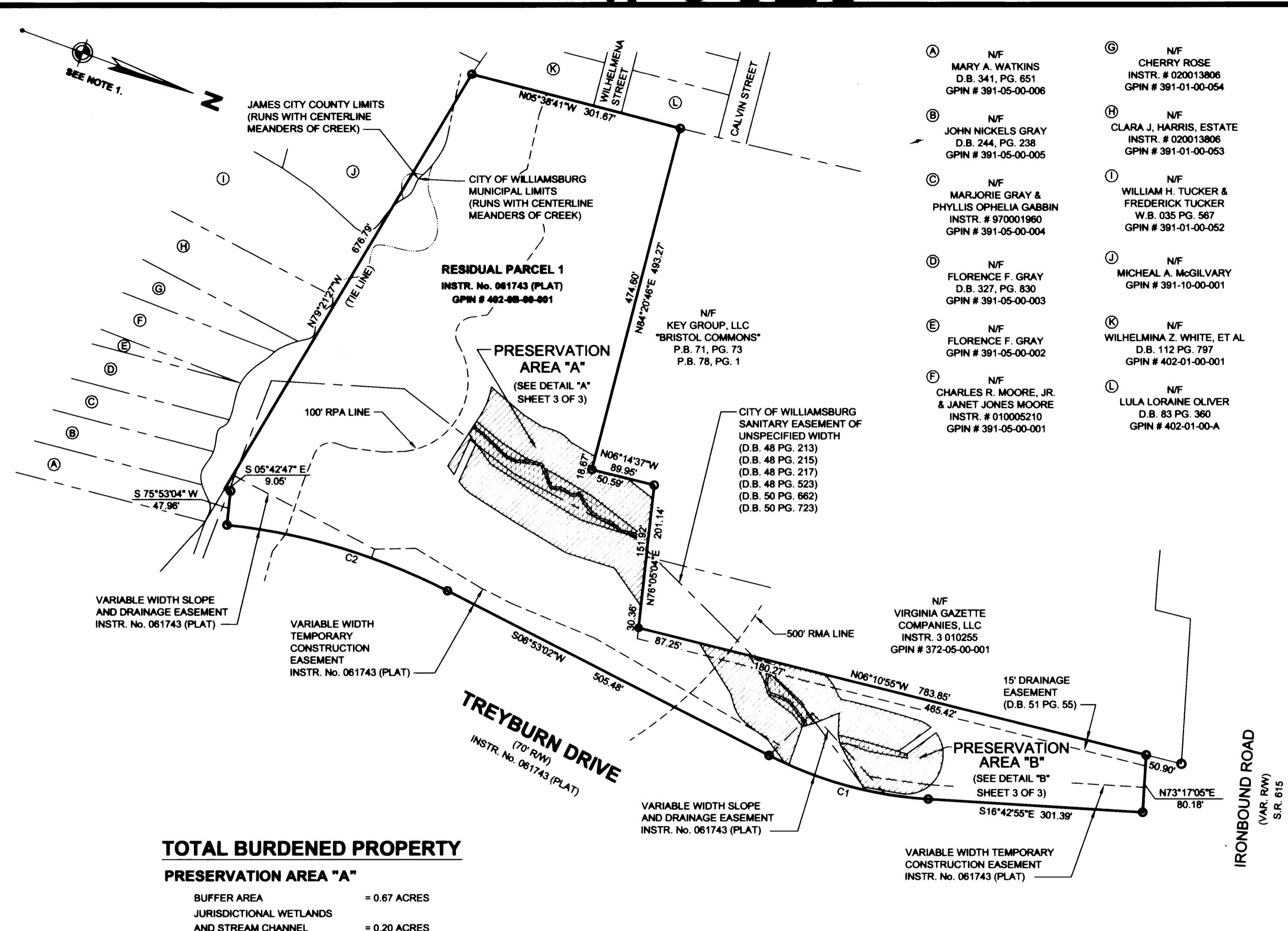


# #062546



- NOTES:**
- BEARINGS AND DISTANCES SHOWN HEREON ARE BASED ON VIRGINIA STATE PLANE COORDINATE SYSTEM, SOUTH ZONE, NAD 83, CITY OF WILLIAMSBURG CONTROL NETWORK.
  - THE MUNICIPAL LINE BETWEEN THE CITY OF WILLIAMSBURG AND JAMES CITY COUNTY IS THE CENTERLINE MEANDERS OF THE CREEK; TIE LINES ARE DEPICTED HEREON.
  - BUFFER AREAS, JURISDICTIONAL WETLANDS AND STREAM CHANNEL AREAS BASED ON DRAWING ENTITLED "JURISDICTIONAL AREA IMPACTS MAP, HIGH STREET, CITY OF WILLIAMSBURG, VIRGINIA" DATED JUNE 24, 2005, REVISED SEPTEMBER 29, 2005, PREPARED BY WILLIAMSBURG ENVIRONMENTAL GROUP, INC.



**TOTAL BURDENED PROPERTY**

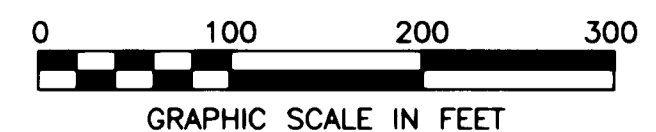
PRESERVATION AREA "A"	
BUFFER AREA	= 0.67 ACRES
JURISDICTIONAL WETLANDS AND STREAM CHANNEL	= 0.20 ACRES
PRESERVATION AREA	= 0.87 ACRES

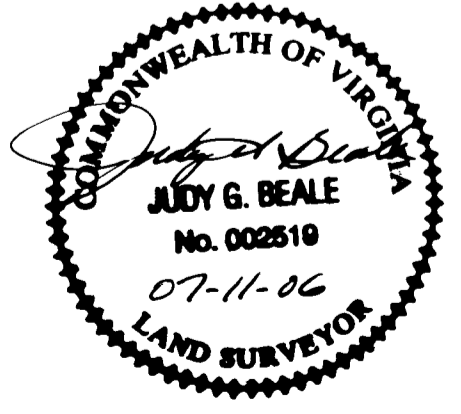
PRESERVATION AREA "B"	
BUFFER AREA	= 0.58 ACRES
JURISDICTIONAL WETLANDS AND STREAM CHANNEL	= 0.08 ACRES
PRESERVATION AREA	= 0.66 ACRES

**LEGEND**

- IRON PIPE FOUND
- IRON PIN FOUND
- - - C/L DITCH
- - - C/L CREEK
- [Hatched Box] PRESERVATION AREA
- [Dotted Box] JURISDICTIONAL WETLANDS AND STREAM CHANNEL
- [White Box] BUFFER AREA



VIRGINIA:  
 IN THE CLERK'S OFFICE OF THE CIRCUIT COURT OF THE CITY OF WILLIAMSBURG, VIRGINIA ON THIS 17 DAY OF July, 2006, THIS PLAT WAS RECEIVED AND ADMITTED TO RECORD IN MAP BOOK        AT PAGE        AT 12:24 PM  
 TESTE: Betsy B. Woolridge CLERK  
By Claudia M. Beale, Esq.



City of Williamsburg & County of James City Circuit Court. This PLAT was recorded on 17 July 2006 at 12:24 AM/PM, PB        PG        DOCUMENT # 062546 BETSY B. WOOLRIDGE, CLERK  
Betsy B. Woolridge Clerk

2 Large/Small Plat(s) Recorded  
 Search as # 062546

**EXHIBIT OF PRESERVATION AREAS**  
 PER DECLARATION OF RESTRICTIONS  
 PROPERTY OF  
**CITY OF WILLIAMSBURG, VA**  
 (D.B. 121 PG. 321, INSTR. No. 980769, INSTR. No. 031671 & INSTR. No. 040340)  
 WILLIAMSBURG, VIRGINIA

DES. <u>N/A</u>	JOB NO. <u>62896.04</u>
DRN. <u>RDA</u>	SCALE: <u>1"=100'</u>
CKD. <u>JGB</u>	DATE <u>7-06-06</u>
SHEET NO. <u>1</u> OF <u>2</u>	
FILE NO. <u>Wetlands ease.dwg</u>	

**WOOLPERT, INC.**  
 415 PORT CENTRE PARKWAY  
 SUITE 101  
 PORTSMOUTH, VA 23704-4924  
 TEL: 757.399.6882 FAX: 757.399.6869