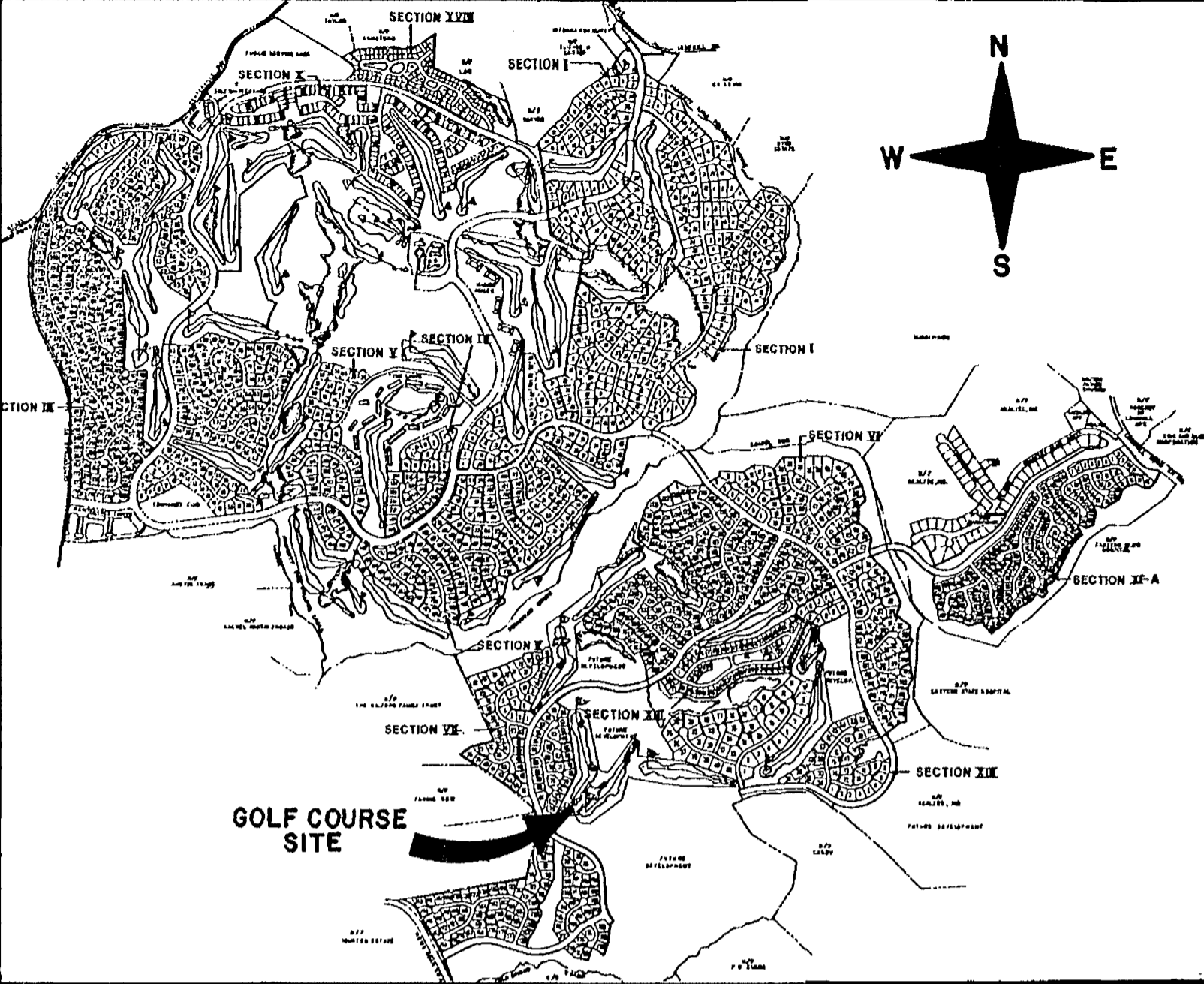
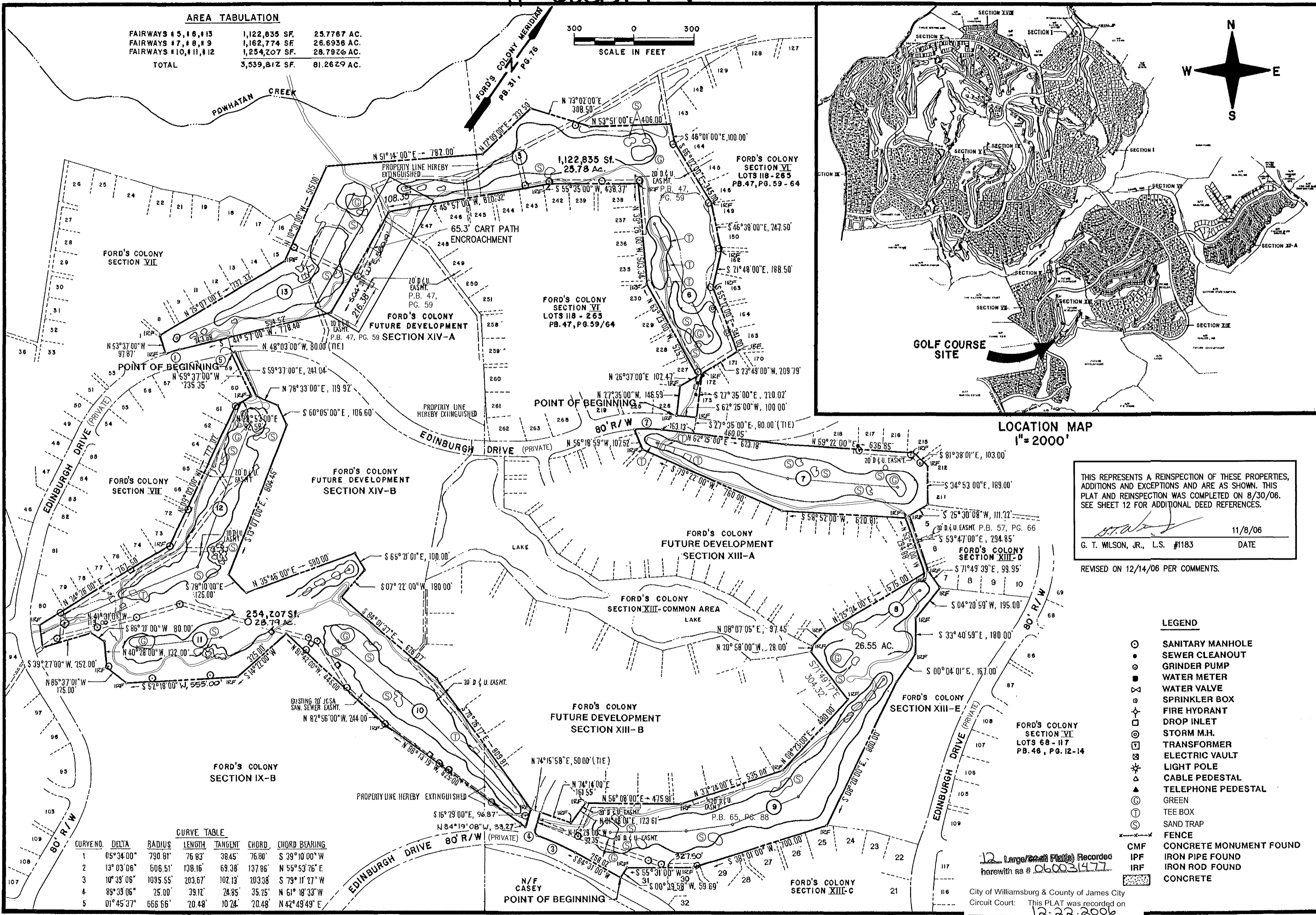
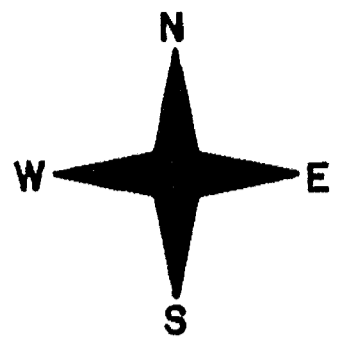
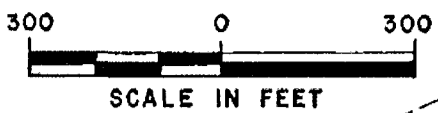


#060031477

AREA TABULATION

FAIRWAYS # 5, # 8, # 13	1,122,835 SF.	25.7787 AC.
FAIRWAYS # 7, # 8, # 9	1,162,774 SF.	26.6936 AC.
FAIRWAYS # 10, # 11, # 12	1,254,207 SF.	28.7926 AC.
TOTAL	3,539,812 SF.	81.2629 AC.



LOCATION MAP
1"=2000'

THIS REPRESENTS A REINSPECTION OF THESE PROPERTIES, ADDITIONS AND EXCEPTIONS AND ARE AS SHOWN. THIS PLAT AND REINSPECTION WAS COMPLETED ON 8/30/06. SEE SHEET 12 FOR ADDITIONAL DEED REFERENCES.

G.T. Wilson, Jr. 11/8/06
G. T. WILSON, JR., L.S. #1183 DATE

REVISED ON 12/14/06 PER COMMENTS.

LEGEND

- SANITARY MANHOLE
- SEWER CLEANOUT
- ⊗ GRINDER PUMP
- ⊕ WATER METER
- ⊞ WATER VALVE
- ⊠ SPRINKLER BOX
- ⊡ FIRE HYDRANT
- ⊟ DROP INLET
- ⊞ STORM M.H.
- ⊠ TRANSFORMER
- ⊞ ELECTRIC VAULT
- ⊡ LIGHT POLE
- ⊟ CABLE PEDESTAL
- ⊞ TELEPHONE PEDESTAL
- ⊠ GREEN
- ⊞ TEE BOX
- ⊟ SAND TRAP
- ⊞ FENCE
- ⊠ CMF CONCRETE MONUMENT FOUND
- ⊞ IPF IRON PIPE FOUND
- ⊟ IRF IRON ROD FOUND
- ⊞ CONCRETE

CURVE TABLE

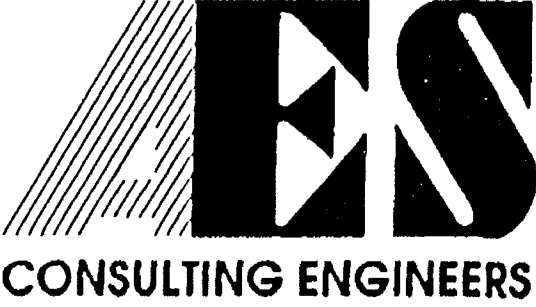
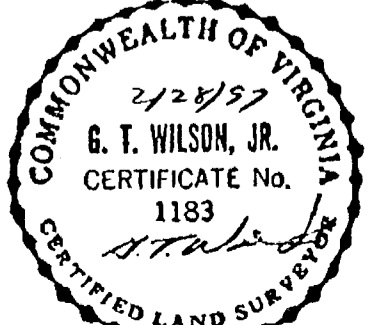
CURVE NO.	DELTA	RADIUS	LENGTH	TANGENT	CHORD	CHORD BEARING
1	05°34'00"	790.81'	76.83'	38.45'	76.80'	S 39°10'00" W
2	13°03'06"	606.51'	138.16'	69.38'	137.86'	S 55°53'26" E
3	10°39'06"	1095.55'	203.67'	102.13'	203.38'	S 79°11'27" W
4	89°39'06"	25.00'	39.12'	24.85'	35.25'	N 61°18'33" W
5	01°45'37"	666.66'	20.48'	10.24'	20.48'	N 42°49'49" E

12 Large (22 x 34) Plats Recorded
herewith as # 060031477

City of Williamsburg & County of James City
Circuit Court: This PLAT was recorded on
12-22-2006
at 1149 AM, PG. PB. PG.
DOCUMENT # 060031477
BETSY B. WOOLRIDGE, CLERK
Betsy Woolridge Clerk

EXHIBIT 'B' - TRACT 8 (SEE SH. 12)

ALTA / ACSM LAND TITLE SURVEY
WILLIAMSBURG WEST 9 HOLE
THE GOLF COURSE PROPERTIES
OWNED BY
FORD'S COLONY COUNTRY CLUB, INC.



5248 Olde Towne Road, Suite 1
Williamsburg, Virginia 23188
(804) 253-0040
Fax (804) 220-8994

POWHATAN DISTRICT JAMES CITY COUNTY VIRGINIA

NO	DATE	REVISION / COMMENT / NOTE	BY
3	12/21/06	REVISED PER COMMENTS	GTW
2	8/30/06	REINSPECTION	GTW
1	4/16/97	REVISED PER COMMENTS	BTW

Designed LCA/AES	Drawn BB
Scale 1"=300'	Date 2/28/97
Project No. 5652	
Drawing No. 9 of 12	