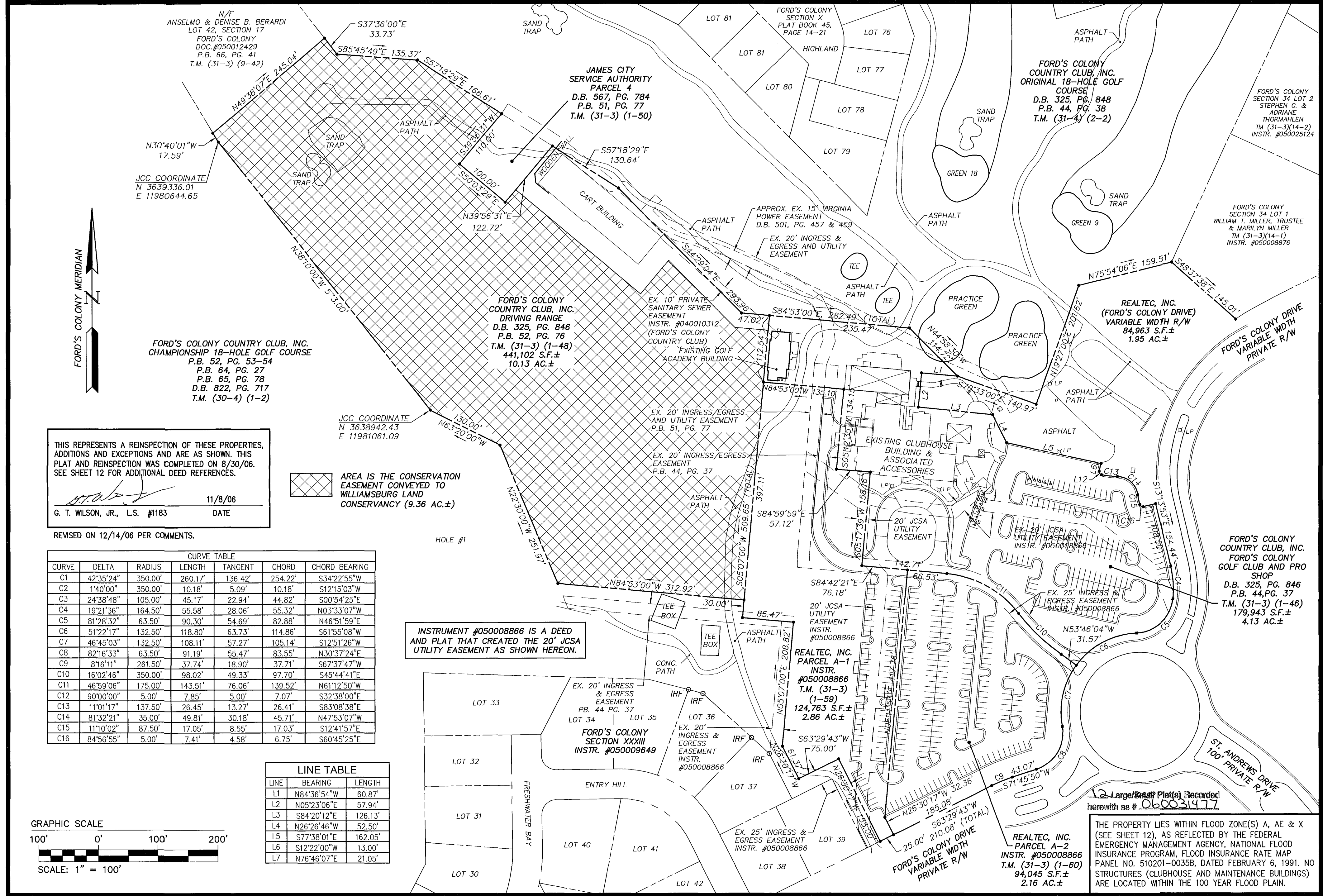


#060031477



N/F
ANSELMO & DENISE B. BERARDI
LOT 42, SECTION 17
FORD'S COLONY
DOC. #050012429
P.B. 66, PG. 41
T.M. (31-3) (9-42)

JAMES CITY
SERVICE AUTHORITY
PARCEL 4
D.B. 567, PG. 784
P.B. 51, PG. 77
T.M. (31-3) (1-50)

FORD'S COLONY
COUNTRY CLUB, INC.
ORIGINAL 18-HOLE GOLF
COURSE
D.B. 325, PG. 848
P.B. 44, PG. 38
T.M. (31-4) (2-2)

JCC COORDINATE
N 3639336.01
E 11980644.65

FORD'S COLONY COUNTRY CLUB, INC.
CHAMPIONSHIP 18-HOLE GOLF COURSE
P.B. 52, PG. 53-54
P.B. 64, PG. 27
P.B. 65, PG. 78
D.B. 822, PG. 717
T.M. (30-4) (1-2)

JCC COORDINATE
N 3638942.43
E 11981061.09

FORD'S COLONY
COUNTRY CLUB, INC.
DRIVING RANGE
D.B. 325, PG. 846
P.B. 52, PG. 76
T.M. (31-3) (1-48)
441,102 S.F.±
10.13 AC.±

EX. 10' PRIVATE
SANITARY SEWER
EASEMENT
INSTR. #040010312
(FORD'S COLONY
COUNTRY CLUB)
EXISTING GOLF
ACADEMY BUILDING

EXISTING CLUBHOUSE
BUILDING &
ASSOCIATED
ACCESSORIES

REALTEC, INC.
(FORD'S COLONY DRIVE)
VARIABLE WIDTH R/W
84,963 S.F.±
1.95 AC.±

FORD'S COLONY
SECTION 34 LOT 1
WILLIAM T. MILLER, TRUSTEE
& MARILYN MILLER
TM (31-3)(14-1)
INSTR. #050008876

FORD'S COLONY
COUNTRY CLUB, INC.
FORD'S COLONY
GOLF CLUB AND PRO
SHOP
D.B. 325, PG. 846
P.B. 44, PG. 37
T.M. (31-3) (1-46)
179,943 S.F.±
4.13 AC.±

THIS REPRESENTS A REINSPECTION OF THESE PROPERTIES,
ADDITIONS AND EXCEPTIONS AND ARE AS SHOWN. THIS
PLAT AND REINSPECTION WAS COMPLETED ON 8/30/06.
SEE SHEET 12 FOR ADDITIONAL DEED REFERENCES.

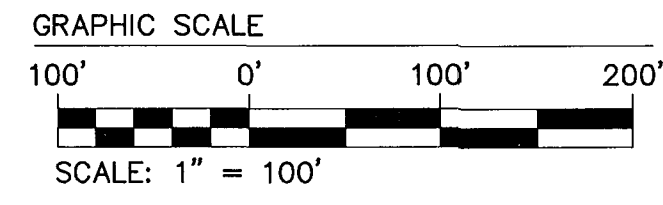
G.T. Wilson, Jr. 11/8/06
G. T. WILSON, JR., L.S. #1183 DATE

AREA IS THE CONSERVATION
EASEMENT CONVEYED TO
WILLIAMSBURG LAND
CONSERVANCY (9.36 AC.±)

REVISED ON 12/14/06 PER COMMENTS.

CURVE TABLE						
CURVE	DELTA	RADIUS	LENGTH	TANGENT	CHORD	CHORD BEARING
C1	42°35'24"	350.00'	260.17'	136.42'	254.22'	S34°22'55"W
C2	1°40'00"	350.00'	10.18'	5.09'	10.18'	S12°15'03"W
C3	24°38'48"	105.00'	45.17'	22.94'	44.82'	S00°54'25"E
C4	19°21'36"	164.50'	55.58'	28.06'	55.32'	N03°33'07"W
C5	81°28'32"	63.50'	90.30'	54.69'	82.88'	N46°51'59"E
C6	51°22'17"	132.50'	118.80'	63.73'	114.86'	S61°55'08"W
C7	46°45'03"	132.50'	108.11'	57.27'	105.14'	S12°51'26"W
C8	82°16'33"	63.50'	91.19'	55.47'	83.55'	N30°37'24"E
C9	8°16'11"	281.50'	37.74'	18.90'	37.71'	S67°37'47"W
C10	16°02'46"	350.00'	98.02'	49.33'	97.70'	S45°44'41"E
C11	46°59'06"	175.00'	143.51'	76.06'	139.52'	N61°12'50"W
C12	90°00'00"	5.00'	7.85'	5.00'	7.07'	S32°38'00"E
C13	11°01'17"	137.50'	26.45'	13.27'	26.41'	S83°08'38"E
C14	81°32'21"	35.00'	49.81'	30.18'	45.71'	N47°53'07"W
C15	11°10'02"	87.50'	17.05'	8.55'	17.03'	S12°41'57"E
C16	84°56'55"	5.00'	7.41'	4.58'	6.75'	S60°45'25"E

LINE TABLE		
LINE	BEARING	LENGTH
L1	N84°36'54"W	60.87'
L2	N05°23'06"E	57.94'
L3	S84°20'12"E	126.13'
L4	N26°26'46"W	52.50'
L5	S77°38'01"E	162.05'
L6	S12°22'00"W	13.00'
L7	N76°46'07"E	21.05'

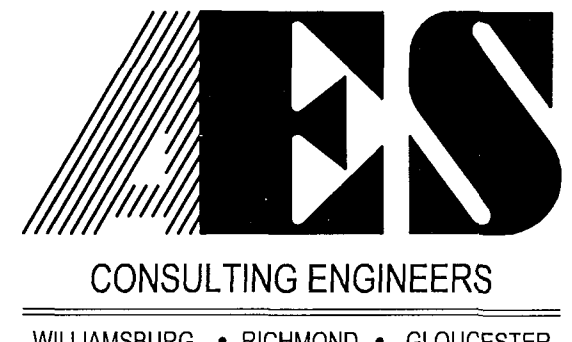


INSTRUMENT #050008866 IS A DEED
AND PLAT THAT CREATED THE 20' JCSA
UTILITY EASEMENT AS SHOWN HEREON.

12 Large/Small Plat(s) Recorded
herewith as # 060031477

THE PROPERTY LIES WITHIN FLOOD ZONE(S) A, AE & X
(SEE SHEET 12), AS REFLECTED BY THE FEDERAL
EMERGENCY MANAGEMENT AGENCY, NATIONAL FLOOD
INSURANCE PROGRAM, FLOOD INSURANCE RATE MAP
PANEL NO. 510201-0035B, DATED FEBRUARY 6, 1991. NO
STRUCTURES (CLUBHOUSE AND MAINTENANCE BUILDINGS)
ARE LOCATED WITHIN THE 100 YEAR FLOOD PLAIN.

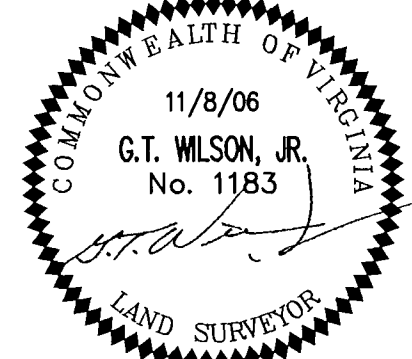
EXHIBIT 'A' - TRACT 5 (SEE SH. 12)



5248 Olde Towne Road, Suite 1
Williamsburg, Virginia 23188
(757) 253-0040
Fax (757) 220-8994

ALTA / ACSM LAND TITLE SURVEY
PORTION FORMER PARCELS 1, 3 & 5
NOW DRIVING RANGE, GOLF CLUB & PRO SHOP
THE GOLF COURSE PROPERTIES
OWNED BY
FORD'S COLONY COUNTRY CLUB, INC.

POWhatan DISTRICT JAMES CITY COUNTY VIRGINIA



City of Williamsburg & County of James City Circuit Court: This PLAT was recorded on 12-22-2006 at 11:49 AM/PM PG. 1	
DOCUMENT # 060031477 BETSY B. WOOLRIDGE, CLERK <i>Betsy Woolridge</i> Clerk	
1	12/21/06 REVISED PER COMMENTS BY
No.	DATE REVISION / COMMENT / NOTE BY

Designed JAG	Drawn AWT
Scale 1"=100'	Date 11/1/06
Project No. 5652-33	
Drawing No. 6 OF 12	