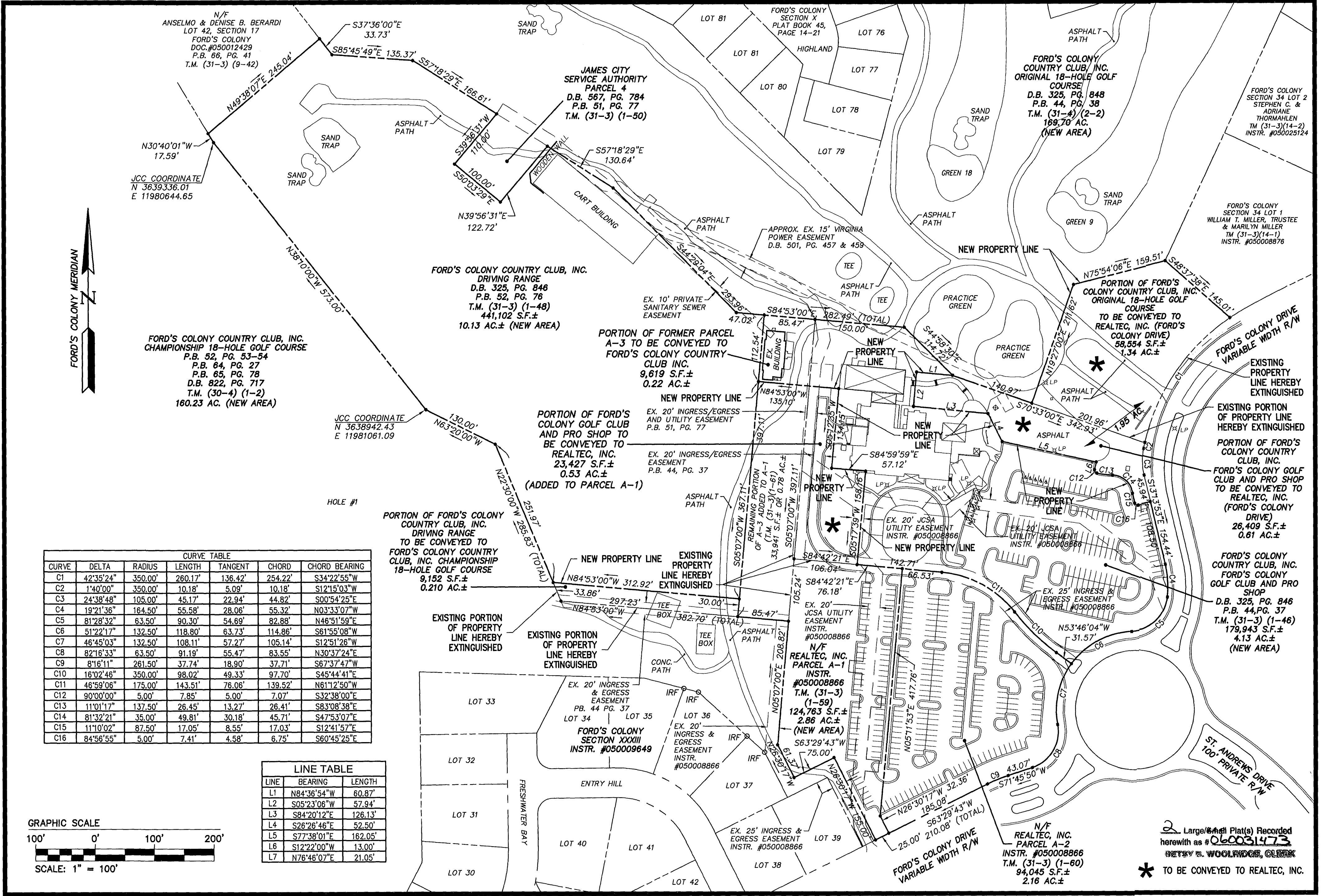
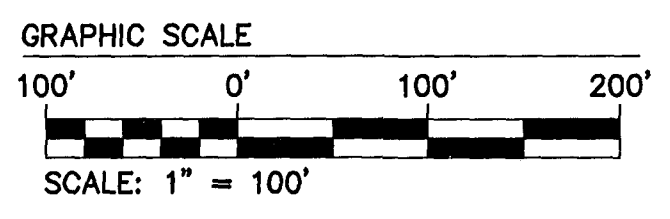


#060031473

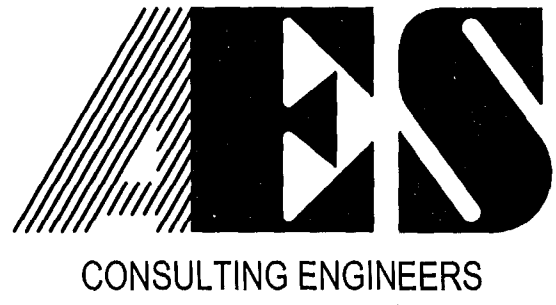


CURVE TABLE						
CURVE	DELTA	RADIUS	LENGTH	TANGENT	CHORD	CHORD BEARING
C1	42°35'24"	350.00'	260.17'	136.42'	254.22'	S34°22'55"W
C2	1°40'00"	350.00'	10.18'	5.09'	10.18'	S12°15'03"W
C3	24°38'48"	105.00'	45.17'	22.94'	44.82'	S00°54'25"E
C4	19°21'36"	164.50'	55.58'	28.06'	55.32'	N03°33'07"W
C5	81°28'32"	63.50'	90.30'	54.69'	82.88'	N46°51'59"E
C6	51°22'17"	132.50'	118.80'	63.73'	114.86'	S61°55'08"W
C7	46°45'03"	132.50'	108.11'	57.27'	105.14'	S12°51'26"W
C8	82°16'33"	63.50'	91.19'	55.47'	83.55'	N30°37'24"E
C9	81°16'11"	261.50'	37.74'	18.90'	37.71'	S67°37'47"W
C10	16°02'46"	350.00'	98.02'	49.33'	97.70'	S45°44'41"E
C11	46°59'06"	175.00'	143.51'	76.06'	139.52'	N61°12'50"W
C12	90°00'00"	5.00'	7.85'	5.00'	7.07'	S32°38'00"E
C13	11°01'17"	137.50'	26.45'	13.27'	26.41'	S83°08'38"E
C14	81°32'21"	35.00'	49.81'	30.18'	45.71'	S47°53'07"E
C15	11°10'02"	87.50'	17.05'	8.55'	17.03'	S12°41'57"E
C16	84°56'55"	5.00'	7.41'	4.58'	6.75'	S60°45'25"E

LINE TABLE		
LINE	BEARING	LENGTH
L1	N84°36'54"W	60.87'
L2	S05°23'06"W	57.94'
L3	S84°20'12"E	126.13'
L4	S26°26'46"E	52.50'
L5	S77°38'01"E	162.05'
L6	S12°22'00"W	13.00'
L7	N76°46'07"E	21.05'

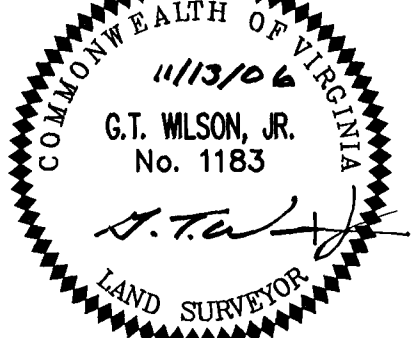


2 Large Sheet Plat(s) Recorded herewith as #060031473
 BETSY B. WOOLRIDGE, CLERK
 * TO BE CONVEYED TO REALTEC, INC.



5248 Olde Towne Road, Suite 1
 Williamsburg, Virginia 23188
 (757) 253-0040
 Fax (757) 220-8994

BOUNDARY LINE ADJUSTMENT AND LOT LINE EXTINGUISHMENT BETWEEN THE PROPERTIES OF FORD'S COLONY COUNTRY CLUB AND REALTEC, INC.
FORD'S COLONY @ WILLIAMSBURG
 POWHATAN DISTRICT JAMES CITY COUNTY VIRGINIA



City of Williamsburg & County of James City Circuit Court: This PLAT was recorded on 12-22-2006 at 11:36 AM, PG. 12-22-2006 DOCUMENT # 060031473 BETSY B. WOOLRIDGE, CLERK	
No.	DATE
REVISION / COMMENT / NOTE	
BY	

Designed AES	Drawn AWT
Scale 1"=100'	Date 11/13/06
Project No. 5652-99	
Drawing No. 2 OF 2	

S:\Jobs\5652\99\dwg\Plats\5652-99.BLA.GOLF-BNDY.SH.2.dwg, 12/11/2006 1:06:38 PM