

#060031464

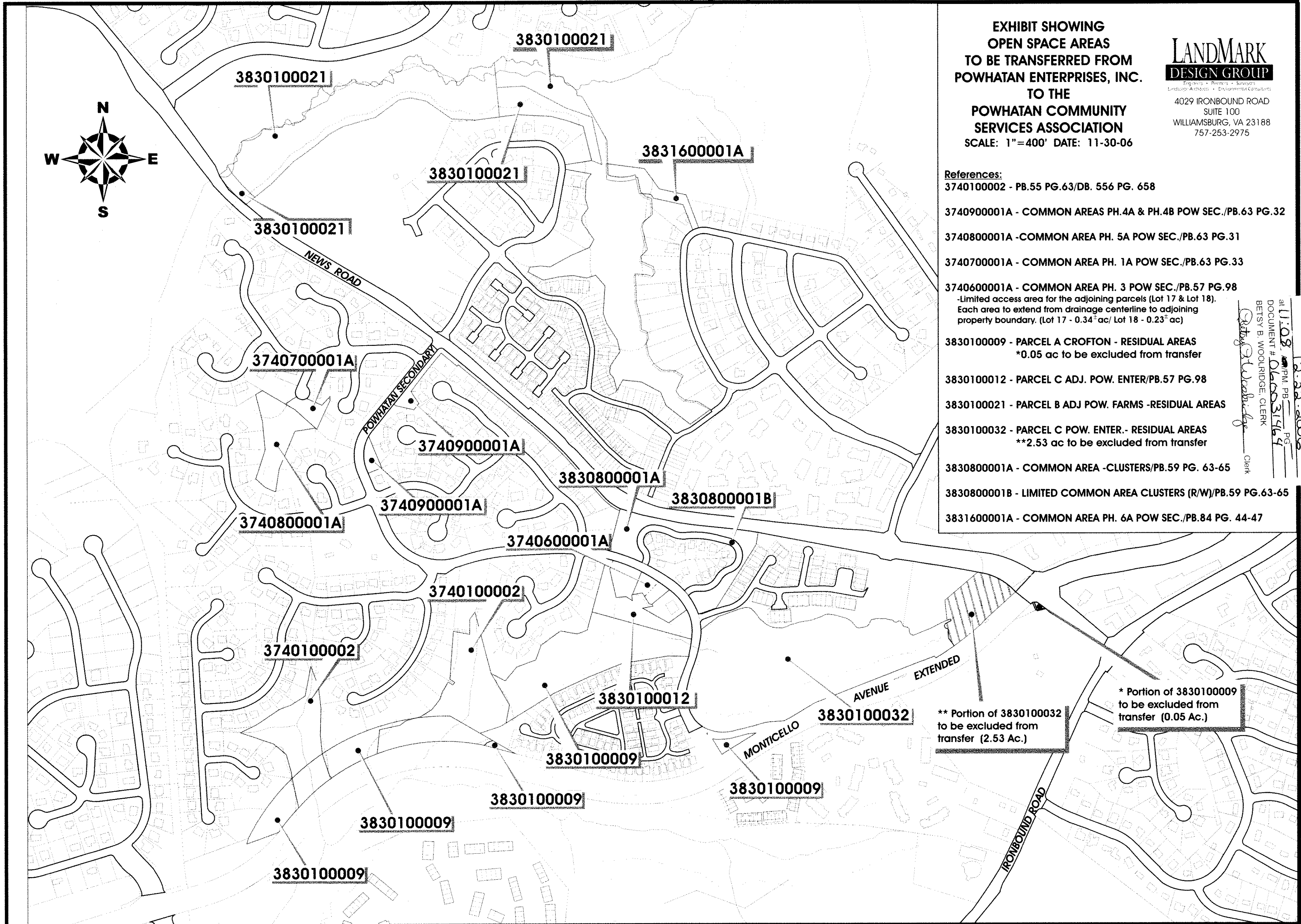
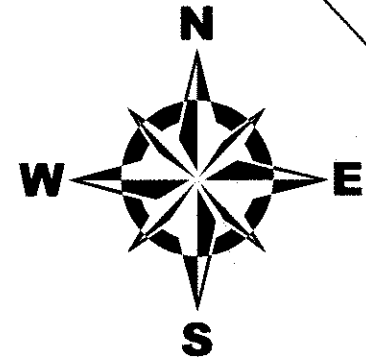


EXHIBIT SHOWING
OPEN SPACE AREAS
TO BE TRANSFERRED FROM
POWHATAN ENTERPRISES, INC.
TO THE
POWHATAN COMMUNITY
SERVICES ASSOCIATION
SCALE: 1"=400' DATE: 11-30-06

**LANDMARK
DESIGN GROUP**
Engineers • Planners • Surveyors
Landscape Architects • Environmental Consultants
4029 IRONBOUND ROAD
SUITE 100
WILLIAMSBURG, VA 23188
757-253-2975

- References:
- 3740100002 - PB.55 PG.63/DB. 556 PG. 658
 - 3740900001A - COMMON AREAS PH.4A & PH.4B POW SEC./PB.63 PG.32
 - 3740800001A - COMMON AREA PH. 5A POW SEC./PB.63 PG.31
 - 3740700001A - COMMON AREA PH. 1A POW SEC./PB.63 PG.33
 - 3740600001A - COMMON AREA PH. 3 POW SEC./PB.57 PG.98
- Limited access area for the adjoining parcels (Lot 17 & Lot 18).
Each area to extend from drainage centerline to adjoining property boundary. (Lot 17 - 0.34[±] ac/ Lot 18 - 0.23[±] ac)
 - 3830100009 - PARCEL A CROFTON - RESIDUAL AREAS
*0.05 ac to be excluded from transfer
 - 3830100012 - PARCEL C ADJ. POW. ENTER/PB.57 PG.98
 - 3830100021 - PARCEL B ADJ POW. FARMS -RESIDUAL AREAS
 - 3830100032 - PARCEL C POW. ENTER. - RESIDUAL AREAS
**2.53 ac to be excluded from transfer
 - 3830800001A - COMMON AREA -CLUSTERS/PB.59 PG. 63-65
 - 3830800001B - LIMITED COMMON AREA CLUSTERS (R/W)/PB.59 PG.63-65
 - 3831600001A - COMMON AREA PH. 6A POW SEC./PB.84 PG. 44-47

at 11:08 AM on 12-22-2006
DOCUMENT # 060031464
BETSY B. WOOLRIDGE, CLERK
Betsy B. Woolridge Clerk
City of Williamsburg & County of James City
Circuit Court: This PLAT was recorded on 12-22-2006

** Portion of 3830100032 to be excluded from transfer (2.53 Ac.)

* Portion of 3830100009 to be excluded from transfer (0.05 Ac.)