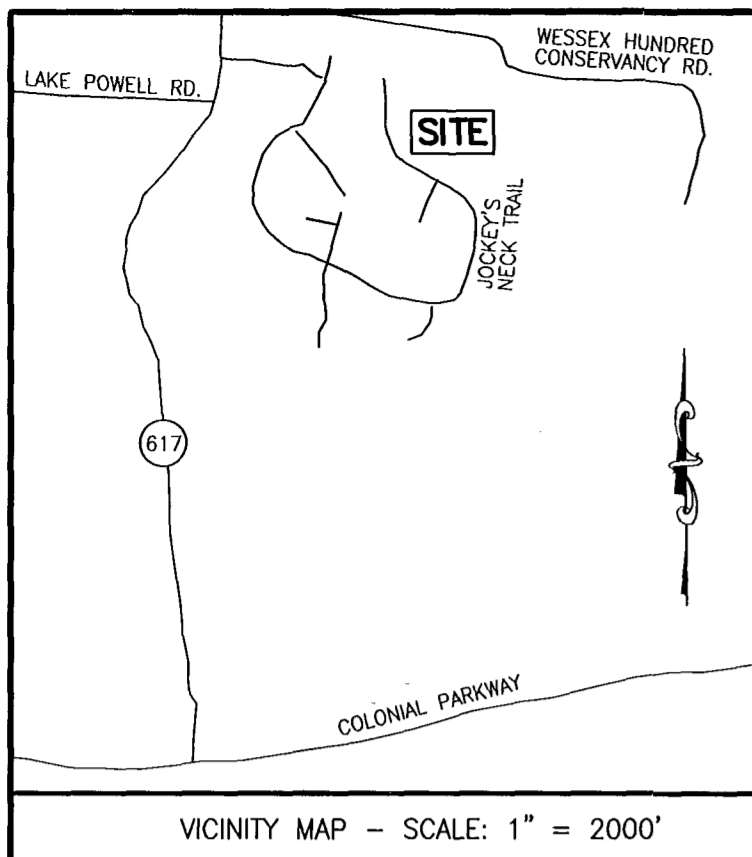
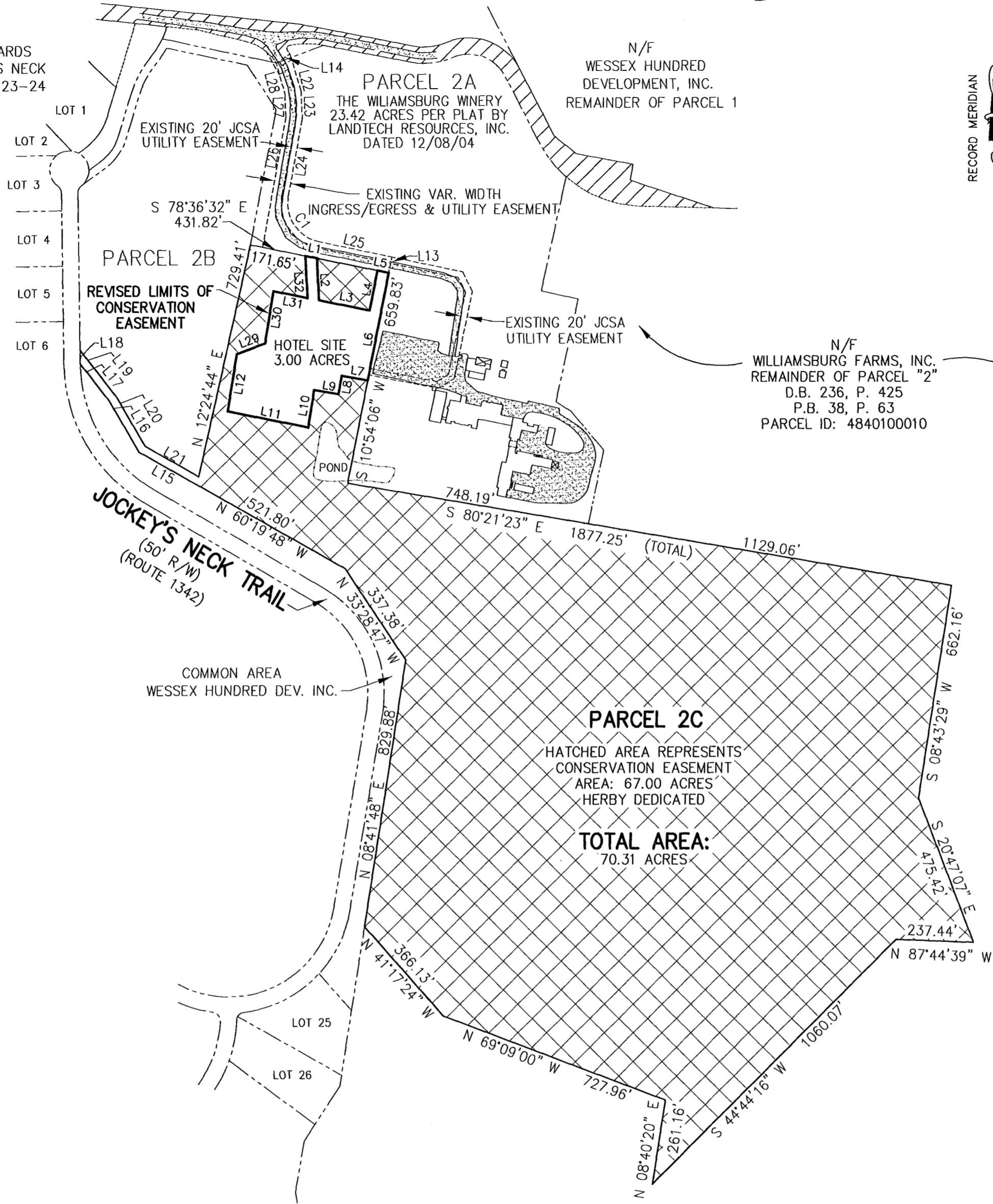


#060030018



THE VINEYARDS
AT JOCKEY'S NECK
P.B. 55 PG. 23-24



RECORD MERIDIAN
INSTRUMENT NO. 040007385

GENERAL NOTES

1. THIS PLAT WAS PRODUCED WITHOUT THE BENEFIT OF A TITLE REPORT.
2. BOUNDARY INFORMATION SHOWN ON THIS PLAT TAKEN FROM RECORD SUBDIVISION PLAT IN INSTRUMENT #040032415.

CURVE DATA

NUMBER	DELTA	CHORD BEARING	TAN	RADIUS	ARC	CHORD
C1	88°09'44"	S 34°00'36" E	116.21	120.00	184.65	166.96

LINE TABLE

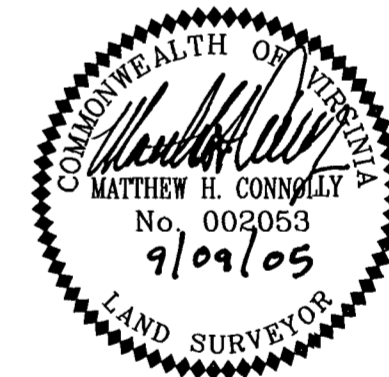
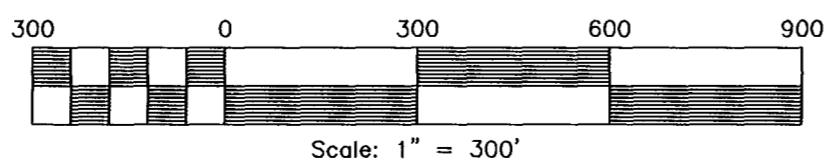
NUMBER	DIRECTION	DISTANCE
L1	S 78°36'32" E	36.12'
L2	S 02°54'52" E	129.00'
L3	S 78°36'32" E	158.25'
L4	N 10°54'06" E	125.00'
L5	S 78°36'32" E	35.00'
L6	S 10°54'06" W	336.00'
L7	N 80°59'05" W	81.35'
L8	S 09°00'55" W	55.97'
L9	N 80°59'05" W	75.86'
L10	S 09°00'55" W	116.67'
L11	N 78°36'32" W	251.27'
L12	N 08°55'47" E	178.65'
L13	N 11°23'28" E	50.00'
L14	S 57°07'07" W	50.00'
L15	N 60°19'48" W	203.68'
L16	N 30°08'44" W	186.01'
L17	N 37°52'36" W	141.68'
L18	N 00°51'31" W	41.52'
L19	S 37°52'36" E	176.52'
L20	S 30°08'44" E	180.96'
L21	S 60°19'48" E	189.18'
L22	N 16°21'52" W	120.88'
L23	N 02°06'32" W	82.27'
L24	S 10°04'15" W	243.42'
L25	S 78°05'28" E	228.36'
L26	S 10°04'15" W	405.63'
L27	N 02°06'32" W	70.68'
L28	N 15°11'14" W	100.43'
L29	N 68°55'40" E	92.79'
L30	N 08°56'07" E	161.86'
L31	S 78°36'32" E	106.34'
L32	N 02°54'52" W	129.00'

City of Williamsburg & County of James City
Circuit Court: This PLAT was recorded on
13 December 2006
at 12:20 AM/PM, PB 1 PG 1
DOCUMENT # 060030018
BETSY B. WOOLRIDGE, CLERK
Betsy B. Woolridge Clerk

STATE OF VIRGINIA, JAMES CITY COUNTY

IN THE CLERKS OFFICE OF THE CIRCUIT COURT FOR THE COUNTY OF
JAMES CITY THE 13 DAY OF December, 2006
THIS MAP WAS PRESENTED AND ADMITTED TO RECORD AS THE LAW
DIRECTS IN PLAT BOOK _____ PAGE _____
TESTE Betsy B. Woolridge, Clerk
BY Claudia H. Binkley, Dep CLERK

Large/Small Plat(s) Recorded
herewith as # 060030018



REVISED
CONSERVATION EASEMENT PLAT
STANDING IN THE NAME OF
WEDMORE PLACE, LLC
LOCATED IN THE ROBERTS DISTRICT
JAMES CITY COUNTY, VIRGINIA

SCALE 1" = 300' DATE: 09/09/05 JOB #04-629

LandTech
Resources, Inc.
Surveying • GPS • Engineering
5810-F Mooretown Road, Williamsburg, VA 23188
Phone: (757) 565-1677 Fax: (757) 565-0782
web: landtechresources.com