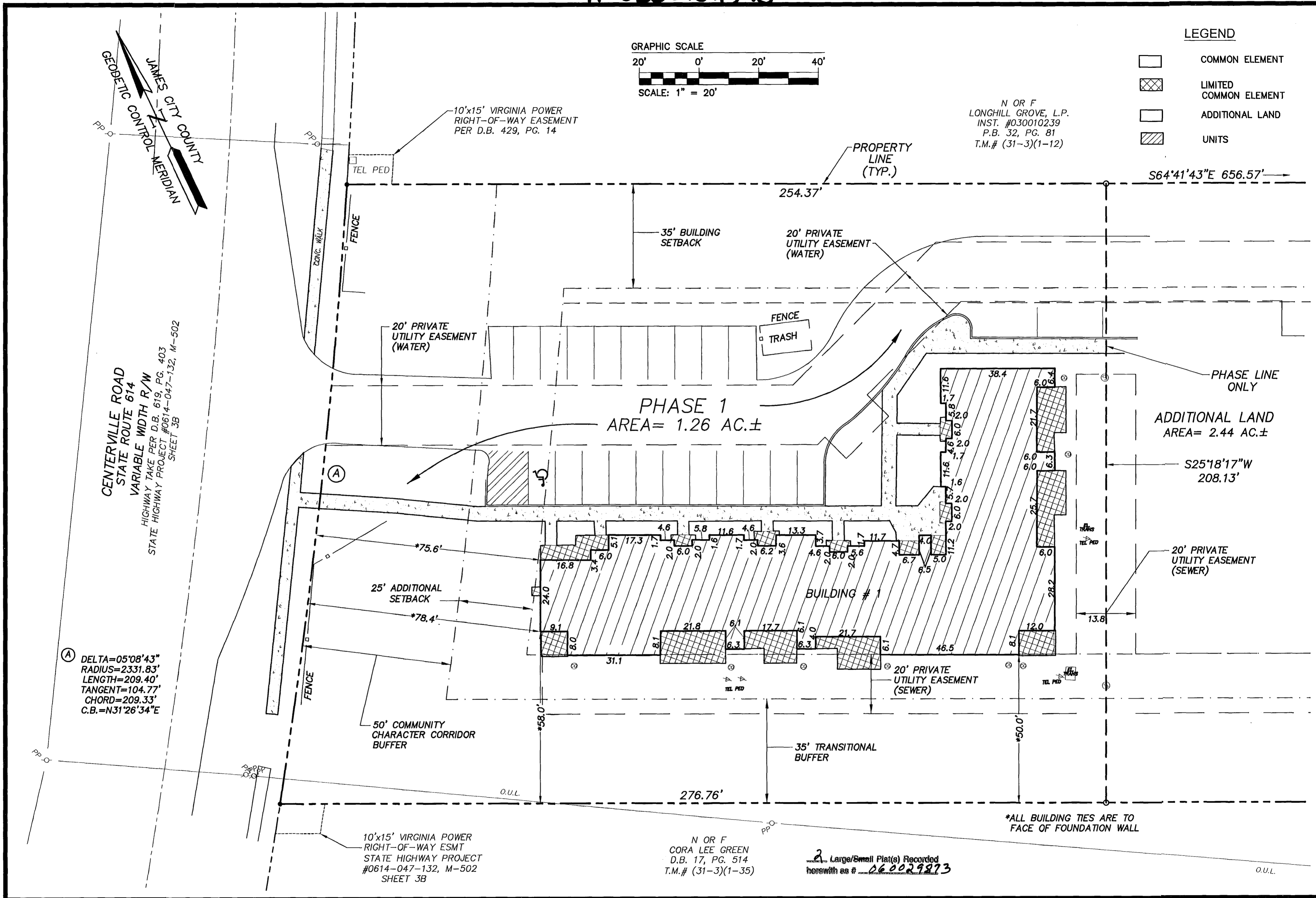


#060029873



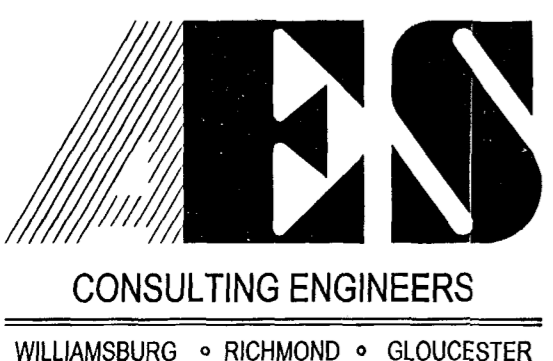
(A) DELTA=05°08'43"
RADIUS=2331.83'
LENGTH=209.40'
TANGENT=104.77'
CHORD=209.33'
C.B.=N31°26'34\"/>

N OR F
LONGHILL GROVE, L.P.
INST. #030010239
P.B. 32, PG. 81
T.M.# (31-3)(1-12)

N OR F
CORA LEE GREEN
D.B. 17, PG. 514
T.M.# (31-3)(1-35)

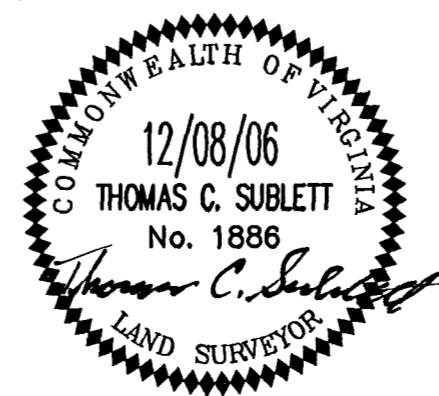
2 Large/Small Plat(s) Recorded
herewith as # 060029873

*ALL BUILDING TIES ARE TO
FACE OF FOUNDATION WALL



5248 Olde Towne Road, Suite 1
Williamsburg, Virginia 23188
(757) 253-0040
Fax (757) 220-8994

"EXHIBIT B"
PLAT OF CONDOMINIUM
WAR HILL GREEN
CONDOMINIUM
PHASE 1
POWHATAN DISTRICT COUNTY OF JAMES CITY VIRGINIA



City of Williamsburg & County of James City		
Circuit Court:	This PLAT was recorded on	
at 11:28 AM/P.M. PG.	12 December 2006	
DOCUMENT #	060029873	
BETSY B. WOOLRIDGE, CLERK		
Betsy B. Woolridge	Clerk	TCS
No.	DATE	REVISION / COMMENT / NOTE
		BY

Designed AES	Drawn RMP
Scale 1"=20'	Date 12/08/06
Project No. 9427	
Drawing No. 2 of 2	