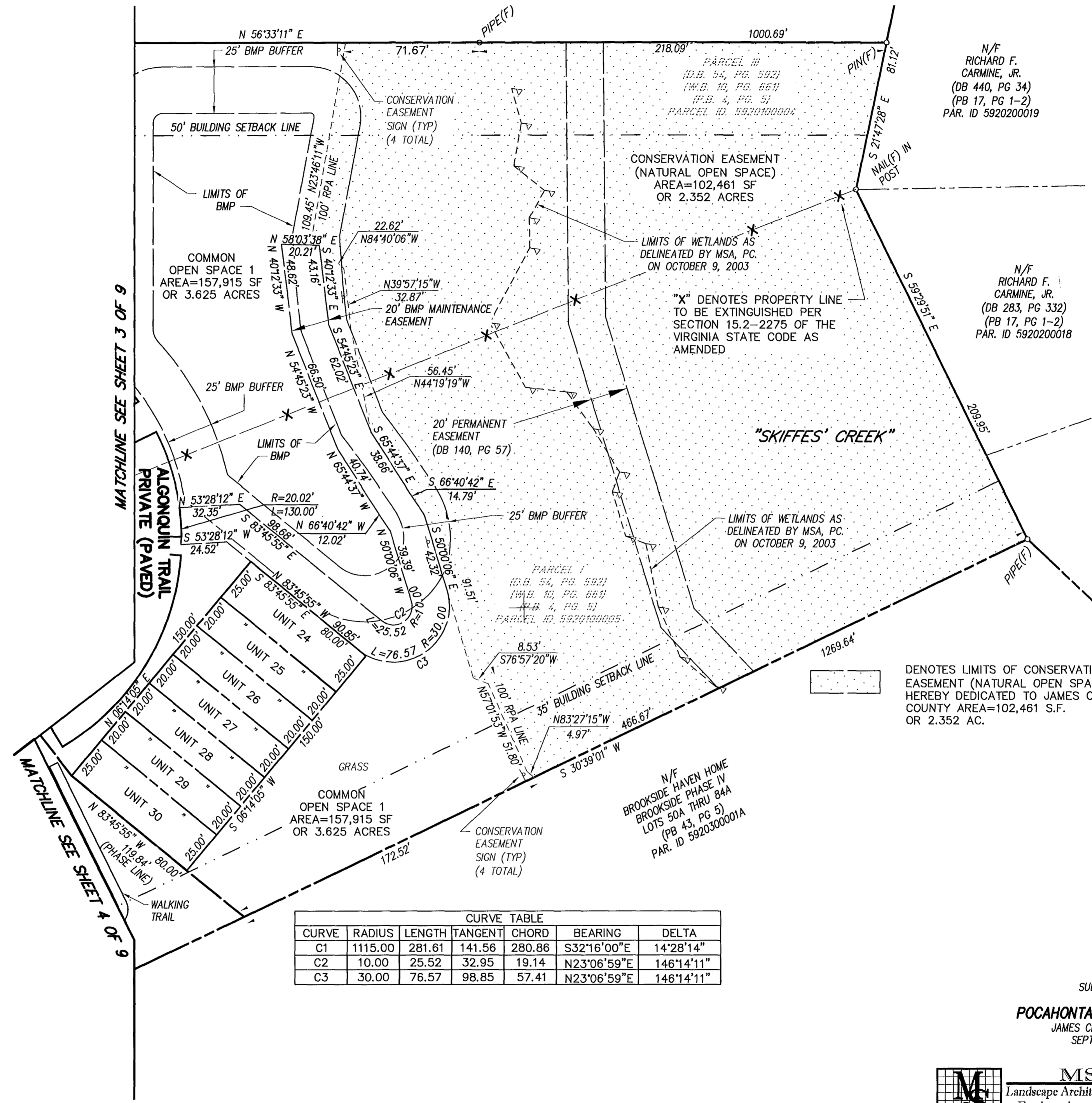


#060029377

VIRGINIA STATE PLANE COORDINATE SYSTEM, SOUTH ZONE, NAD 83/86



N/F RICHARD F. CARMINE, JR. (DB 440, PG 34) (PB 17, PG 1-2) PAR. ID 5920200019

POPLAR HALL PLANTATION SECTION NO. 1 (PB 17, PG 1-2)

N/F RICHARD F. CARMINE, JR. (DB 283, PG 332) (PB 17, PG 1-2) PAR. ID 5920200018

N/F JOHN N EDWARDS (DB 471, PG 102) (PB 17, PG 1-2) PAR. ID 5920200017

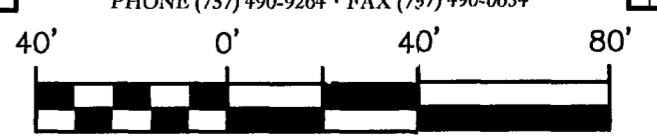
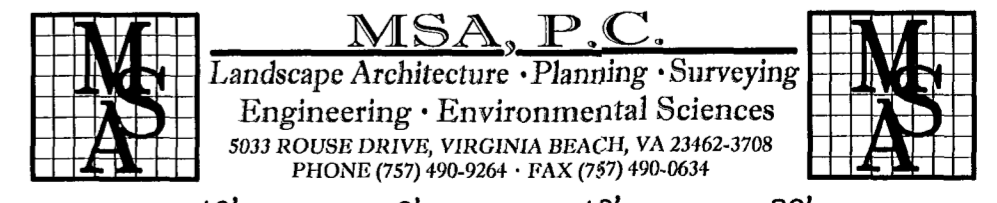
N/F BROOKSIDE HAVEN HOME BROOKSIDE PHASE IV LOTS 50A THRU 84A (PB 43, PG 5) PAR. ID 5920300001A

DENOTES LIMITS OF CONSERVATION EASEMENT (NATURAL OPEN SPACE) HEREBY DEDICATED TO JAMES CITY COUNTY AREA=102,461 S.F. OR 2.352 AC.



CURVE TABLE						
CURVE	RADIUS	LENGTH	TANGENT	CHORD	BEARING	DELTA
C1	1115.00	281.61	141.56	280.86	S32°16'00"E	14°28'14"
C2	10.00	25.52	32.95	19.14	N23°06'59"E	146°14'11"
C3	30.00	76.57	98.85	57.41	N23°06'59"E	146°14'11"

SUBDIVISION PLAT OF POCAHONTAS SQUARE, PHASE 1 JAMES CITY COUNTY, VIRGINIA SEPTEMBER 14, 2006



GRAPHIC SCALE 1" = 40'

9 Large Small Plat(s) Recorded with as # 060029377

City of Williamsburg & County of James City Circuit Court: This PLAT was recorded on 7 December 2006 at 10:50 AM/PM, PB PG DOCUMENT # 060029377 BETSY B. WOOLRIDGE, CLERK