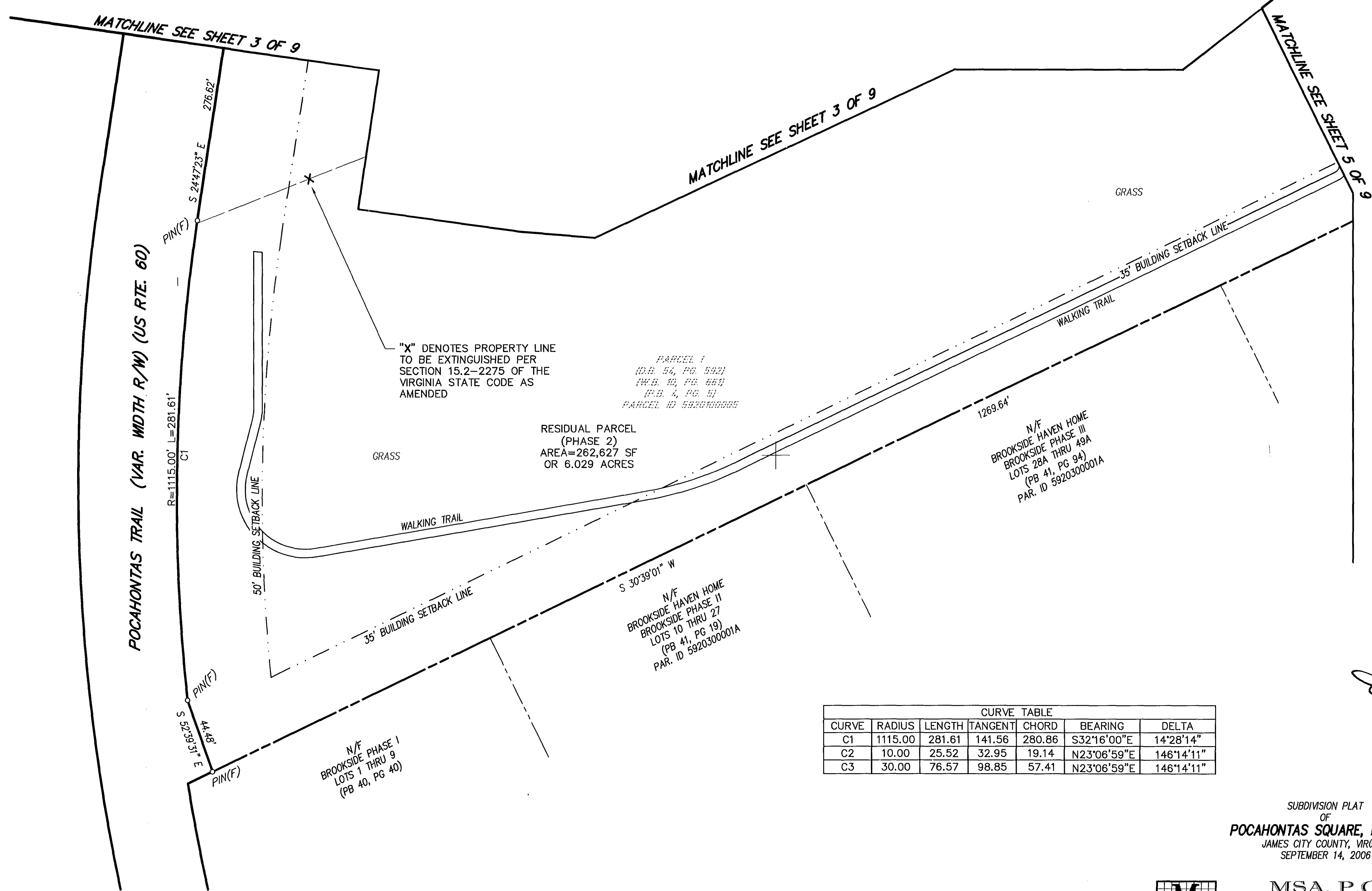


#060029377



VIRGINIA STATE PLANE COORDINATE SYSTEM, SOUTH ZONE, NAD 83/86

PARCEL 1  
 (D.B. 54, PG. 592)  
 (I.W.B. 10, PG. 661)  
 (P.B. 4, PG. 5)  
 PARCEL ID 5920100005

RESIDUAL PARCEL  
 (PHASE 2)  
 AREA=262,627 SF  
 OR 6.029 ACRES

N/F  
 BROOKSIDE HAVEN HOME  
 BROOKSIDE PHASE III  
 LOTS 28A THRU 49A  
 (PB 41, PG 94)  
 PAR. ID 5920300001A

N/F  
 BROOKSIDE HAVEN HOME  
 BROOKSIDE PHASE II  
 LOTS 10 THRU 27  
 (PB 41, PG 19)  
 PAR. ID 5920300001A

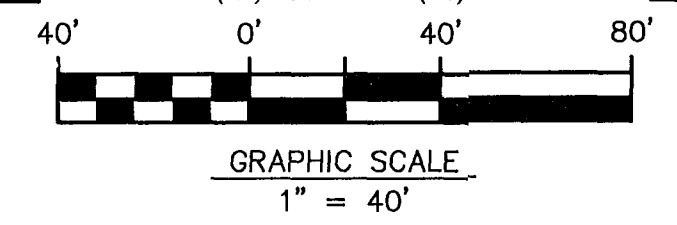
N/F  
 BROOKSIDE PHASE I  
 LOTS 1 THRU 9  
 (PB 40, PG 40)

CURVE TABLE						
CURVE	RADIUS	LENGTH	TANGENT	CHORD	BEARING	DELTA
C1	1115.00	281.61	141.56	280.86	S32°16'00"E	14°28'14"
C2	10.00	25.52	32.95	19.14	N23°06'59"E	146°14'11"
C3	30.00	76.57	98.85	57.41	N23°06'59"E	146°14'11"



SUBDIVISION PLAT  
 OF  
**POCAHONTAS SQUARE, PHASE 1**  
 JAMES CITY COUNTY, VIRGINIA  
 SEPTEMBER 14, 2006

**MSA, P.C.**  
 Landscape Architecture • Planning • Surveying  
 Engineering • Environmental Sciences  
 5033 ROUSE DRIVE, VIRGINIA BEACH, VA 23462-3708  
 PHONE (757) 490-9264 • FAX (757) 490-0634



9 Large/Small Plat(s) Recorded  
 herewith as # 060029377

City of Williamsburg & County of James City  
 Circuit Court: This PLAT was recorded on  
 7 December 2006  
 at 10:50 AM/PM: PG -  
 DOCUMENT # 060029377  
 BETSY B. WOOLRIDGE, CLERK  
 Betsy B. Woolridge Clerk

SEE SHEET 1 OF 9 FOR NOTES AND CERTIFICATES  
 SEE SHEETS 6, 7 & 8 OF 9 FOR JCSA EASEMENT