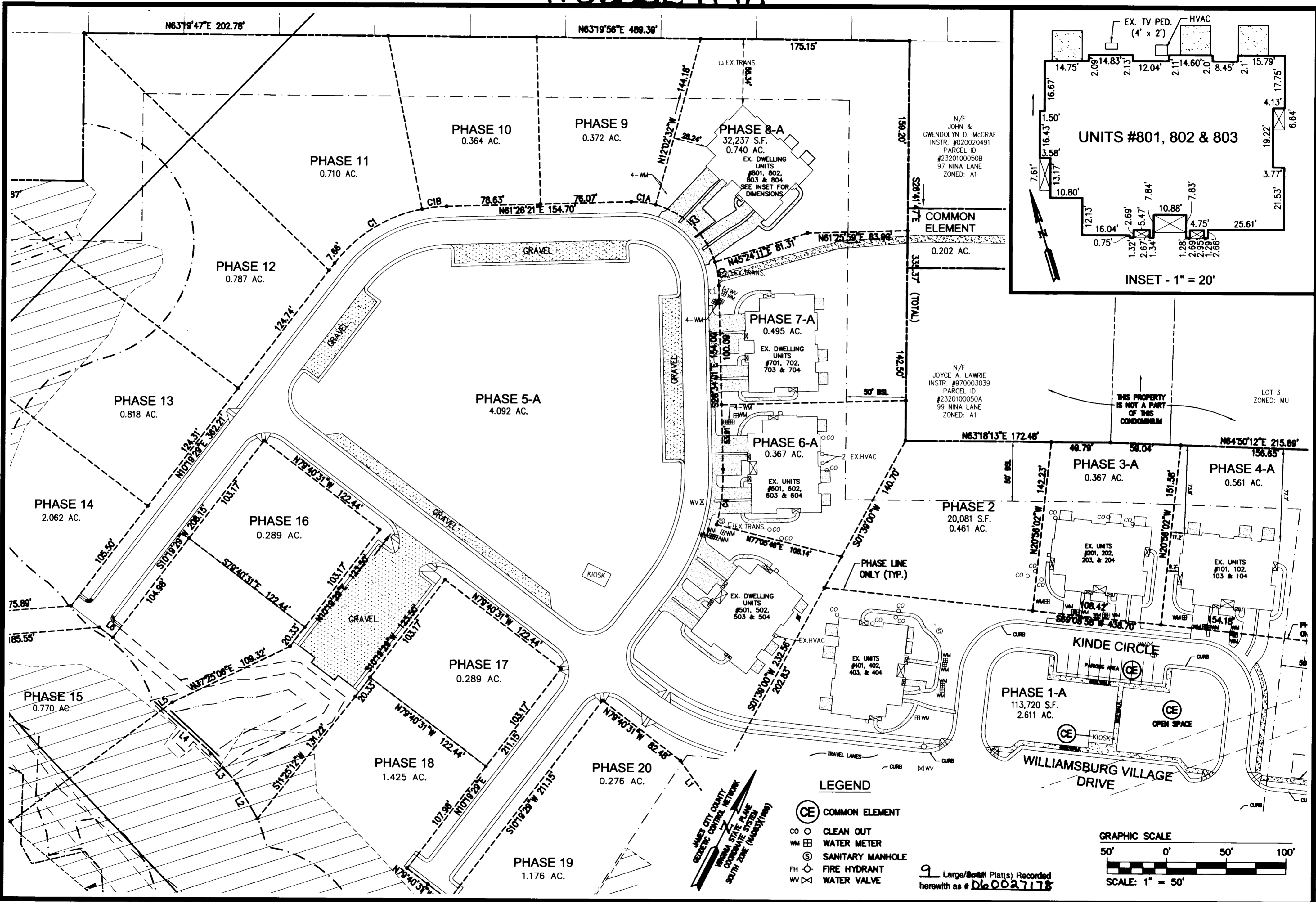
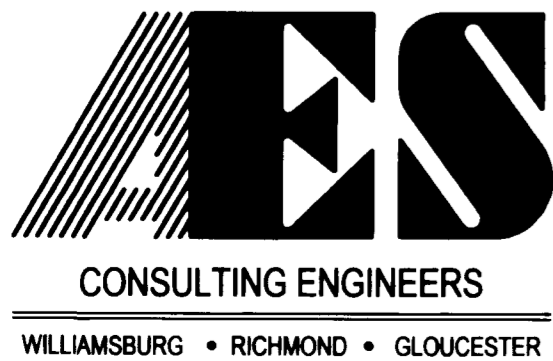


#060027178



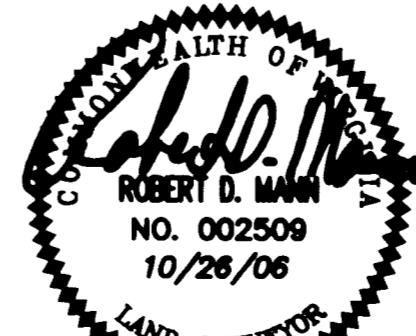
S:\Jobs\9286\02-Norge Condo Plats\dwg\Plats\Record\Phase 8\Final Condo Plat PH 8-A\928602Condo Phase 8-A Sh 02.dwg, 10/30/2006 9:24:57 AM, bobby sanders

"EXHIBIT 1"



5248 Olde Towne Road, Suite 1
Williamsburg, Virginia 23188
(757) 253-0040
Fax (757) 220-8994

PLAT OF CONDOMINIUM
WILLIAMSBURG VILLAGE AT NORGE CONDOMINIUM
PHASE 8-A
UNITS #801, 802, 803, AND 804
STONEHOUSE DISTRICT COUNTY OF JAMES CITY VIRGINIA



City of Williamsburg & County of James City Circuit Court: This PLAT was recorded on 11-6-2006 at 1:39 AM/PM, PG _____ DOCUMENT # 060027178 BETSY B. WOOLRIDGE, CLERK <i>Betsy B. Woolridge</i> Clerk			
No.	DATE	REVISION / COMMENT / NOTE	BY

Designed VMB/JAG	Drawn AWT/MLH
Scale 1"=50'	Date 10/26/06
Project No. 9286-2	
Drawing No. 2 of 9	