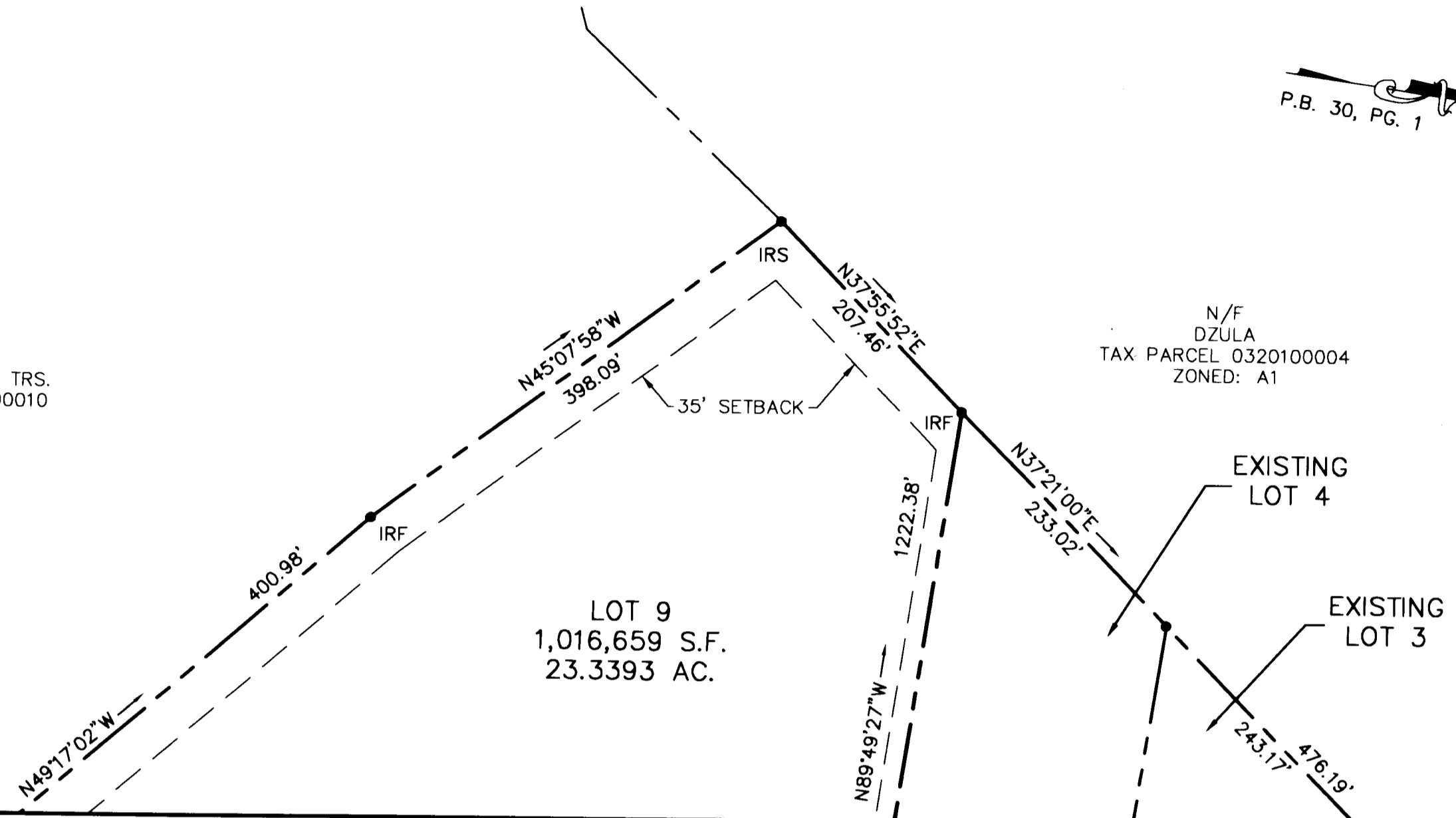


#060026740

P.B. 30, PG. 1

N/F
JOHNATHAN KINNEY, TRS.
TAX PARCEL 0410100010
ZONED: A1

N/F
DZULA
TAX PARCEL 0320100004
ZONED: A1



LOT 9
1,016,659 S.F.
23.3393 AC.

EXISTING
LOT 4

EXISTING
LOT 3

MATCHLINE SEE SHEET 4

SUBDIVISION OF
 LOTS 5, 6, 7, 8 & 9
 BEING A SUBDIVISION OF
 LOT 5
 PROPERTY OF
 TOANO BUSINESS CENTRE, L.L.C.

STONEHOUSE DISTRICT,
 JAMES CITY COUNTY, VIRGINIA
 DATE: SEPT. 11, 2006
 SCALE: 1"=100'
 SHEET 5 OF 5



5 Large/Small Plats Recorded
 herewith as # 060026740

City of Williamsburg & County of James City
 Circuit Court: This PLAT was recorded on
 31 October 2006
 at 11:31 AM/PM: PB PG
 DOCUMENT # 060026740
 BETSY B. WOOLRIDGE, CLERK
 Betsy B. Woolridge Clerk

LANDMARK
DESIGN GROUP
 Engineers • Planners • Surveyors
 Landscape Architects • Environmental Consultants

4029 Ironbound Road
 Suite 100
 Williamsburg, VA 23188
 Tel. (757) 253-2975
 Fax (757) 229-0049
 Email: lmdg@landmarkdg.com

5544 Greenwich Road
 Suite 200
 Virginia Beach, VA 23462
 Tel. (757) 473-2000
 Fax (757) 497-7933
 Email: lmdg@landmarkdg.com

GRAPHIC SCALE



(IN FEET)
 1 inch = 100 ft.

DRAWN BY: PF
 CHKD. BY: AST

PROJ. NO.: 2004085-100.08
 DWG. NO.: 15611W

2004085-100.03 Brown-Cowles Boundary Survey\Cowles-SECOND-SUBD