

#060026740

MATCHLINE SEE SHEET 5

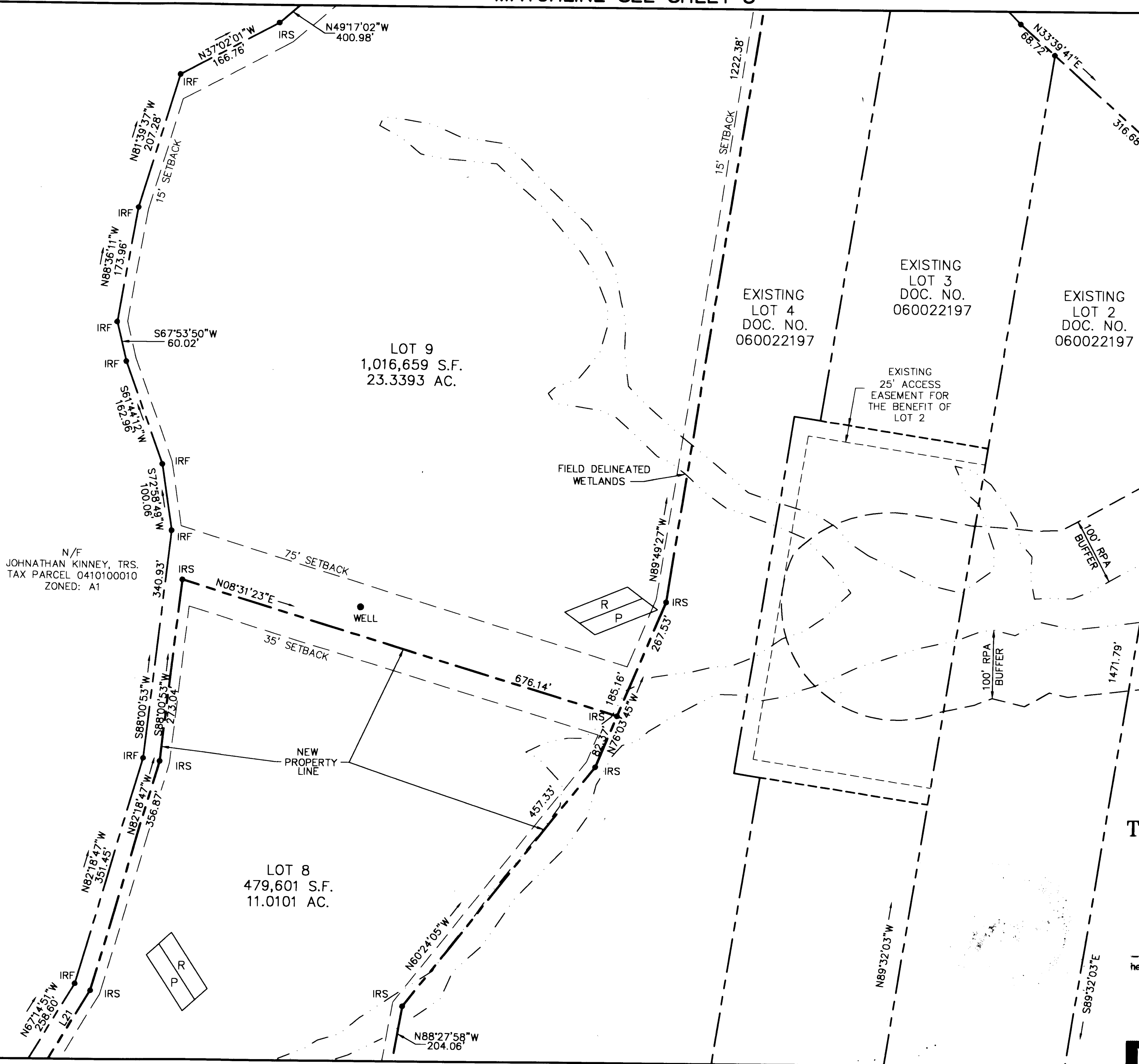
GRAPHIC SCALE



( IN FEET )  
1 inch = 100 ft.



P.B. 30, PG. 1



N/F  
JOHNATHAN KINNEY, TRS.  
TAX PARCEL 0410100010  
ZONED: A1

N/F  
DZULA  
TAX PARCEL 0410100003  
ZONED: A1

City of Williamsburg & County of James City  
Circuit Court: This PLAT was recorded on  
31 October 2006  
at 11:31 AM/PM, PB      PG       
DOCUMENT # 060026740  
BETSY B. WOOLRIDGE, CLERK  
*Betsy B. Woolridge* Clerk



SUBDIVISION OF  
LOTS 5, 6, 7, 8 & 9  
BEING A SUBDIVISION OF  
LOT 5  
PROPERTY OF  
TOANO BUSINESS CENTRE, L.L.C.

STONEHOUSE DISTRICT,  
JAMES CITY COUNTY, VIRGINIA  
DATE: SEPT. 11, 2006  
SCALE: 1"=100'  
SHEET 4 OF 5

5 Large/Small Plat(s) Recorded  
herewith as # 060026740

**LANDMARK**  
**DESIGN GROUP**

Engineers • Planners • Surveyors  
Landscape Architects • Environmental Consultants

4029 Ironbound Road  
Suite 100  
Williamsburg, VA 23188  
Tel. (757) 253-2975  
Fax (757) 229-0049  
Email: lmdg@landmarkdg.com

5544 Greenwich Road  
Suite 200  
Virginia Beach, VA 23462  
Tel. (757) 473-2000  
Fax (757) 497-7933  
Email: lmdg@landmarkdg.com

MATCHLINE SEE SHEET 3

DRAWN BY: PF  
CHKD. BY: AST

PROJ. NO.: 2004085-100.08  
DWG. NO.: 15612W

2004085-100.03 Brown-Cowles Boundary Survey\Cowles-SECOND-SUBD