

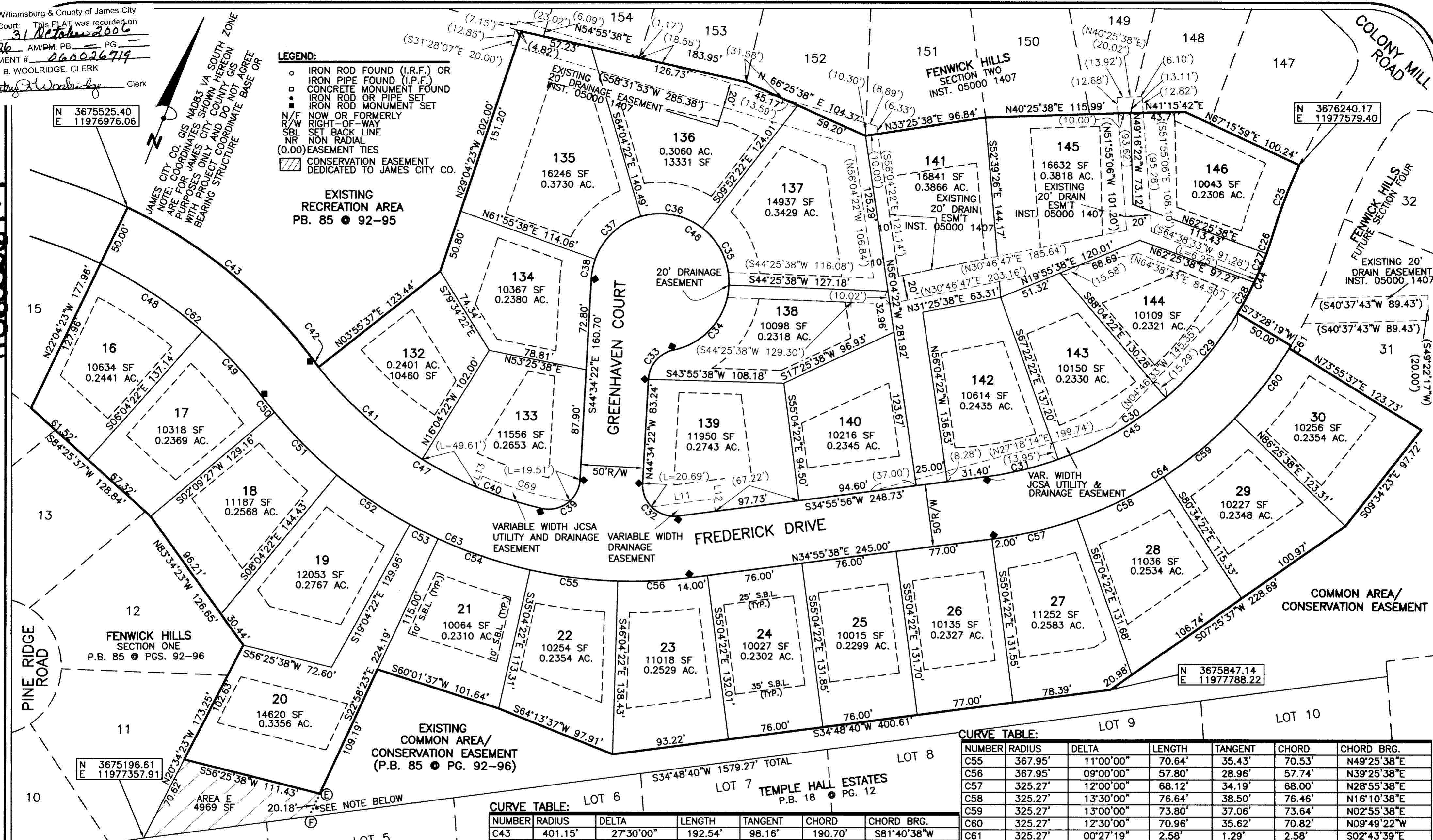
City of Williamsburg & County of James City
 Circuit Court: This PLAT was recorded on
 31 October 2006
 at 9:26 AM/PM. PG. 1
 DOCUMENT # 060026719
 BETSY B. WOOLRIDGE, CLERK
 Betsy B. Woolridge Clerk

#060026719

CAD: RC/ACV CHECK: RC/SLU
 DWG. NO.: 096091SUB2SEC3 JOB NO.: 96091-07
 COMPS: CB

PLAT # 060026719

PLAT # 060026719



LEGEND:
 ○ IRON ROD FOUND (I.R.F.) OR IRON PIPE FOUND (I.P.F.)
 □ CONCRETE MONUMENT FOUND
 ● IRON ROD OR PIPE SET
 ■ IRON ROD MONUMENT SET
 N/F NOW OR FORMERLY
 R/W RIGHT-OF-WAY
 SBL SET BACK LINE
 NR NON RADIAL
 (0.00) EASEMENT TIES
 ▨ CONSERVATION EASEMENT DEDICATED TO JAMES CITY CO.
 EXISTING RECREATION AREA PB. 85 ● 92-95

CURVE TABLE:

NUMBER	RADIUS	DELTA	LENGTH	TANGENT	CHORD	CHORD BRG.
C29	275.27'	18°27'19"	88.67'	44.72'	88.28'	S07°18'02"E
C30	275.27'	20°42'00"	99.45'	50.27'	98.91'	S12°16'38"W
C31	275.27'	12°18'00"	59.09'	29.66'	58.98'	N28°46'38"E
C32	25.00'	99°49'38"	43.56'	29.70'	38.25'	N85°30'49"E
C33	25.00'	75°31'21"	32.95'	19.36'	30.62'	N06°48'41"W
C34	55.00'	76°31'21"	73.46'	43.38'	68.12'	N07°18'42"W
C35	55.00'	54°18'00"	52.12'	28.21'	50.20'	N72°43'22"W
C36	55.00'	54°12'00"	52.03'	28.14'	50.11'	N53°01'38"E
C37	55.00'	54°00'00"	51.84'	28.02'	49.94'	N01°04'22"W
C38	55.00'	16°30'00"	15.84'	7.97'	15.78'	S36°19'22"E
C39	25.00'	99°49'39"	43.56'	29.70'	38.25'	S05°20'28"W
C40	317.95'	18°40'21"	103.62'	52.27'	103.16'	N64°35'28"E
C41	317.95'	20°00'00"	110.99'	56.06'	110.42'	S83°55'38"W
C42	317.95'	01°30'00"	8.32'	4.16'	8.32'	S71°45'00"E

CURVE TABLE: LOT 6

NUMBER	RADIUS	DELTA	LENGTH	TANGENT	CHORD	CHORD BRG.
C43	401.15'	27°30'00"	192.54'	98.16'	190.70'	S81°40'38"W
C44	275.27'	14°32'41"	69.88'	35.13'	69.69'	S10°13'39"E
C45	275.27'	51°27'19"	247.21'	132.64'	238.99'	N09°11'58"E
C46	55.00'	255°31'21"	245.28'	—	86.96'	S83°11'19"W
C47	317.95'	40°10'21"	222.93'	116.27'	218.39'	S75°20'28"W
C48	351.15'	16°00'00"	98.06'	49.35'	97.74'	S75°55'38"W
C49	351.15'	11°30'00"	70.48'	35.36'	70.36'	N89°40'38"E
C50	367.95'	02°30'00"	16.05'	8.03'	16.05'	S85°49'22"E
C51	367.95'	11°00'00"	70.64'	35.43'	70.53'	N87°25'38"E
C52	367.95'	11°00'00"	70.64'	35.43'	70.53'	N76°25'38"E
C53	367.95'	03°54'00"	25.05'	12.53'	25.04'	S68°58'38"W
C54	367.95'	12°06'00"	77.71'	39.00'	77.56'	N60°58'38"E

CURVE TABLE:

NUMBER	RADIUS	DELTA	LENGTH	TANGENT	CHORD	CHORD BRG.
C55	367.95'	11°00'00"	70.64'	35.43'	70.53'	N49°25'38"E
C56	367.95'	09°00'00"	57.80'	28.96'	57.74'	N39°25'38"E
C57	325.27'	12°00'00"	68.12'	34.19'	68.00'	N28°55'38"E
C58	325.27'	13°30'00"	76.64'	38.50'	76.46'	N16°10'38"E
C59	325.27'	13°00'00"	73.80'	37.06'	73.64'	N02°55'38"E
C60	325.27'	12°30'00"	70.96'	35.62'	70.82'	N09°49'22"W
C61	325.27'	00°27'19"	2.58'	1.29'	2.58'	S02°43'39"E
C62	351.15'	27°30'00"	168.54'	85.93'	166.93'	S81°40'38"W
C63	367.95'	60°30'00"	388.53'	214.58'	370.73'	N65°10'38"E
C64	325.27'	51°27'19"	292.11'	156.74'	282.40'	S09°11'59"E

PLAT
 SHOWING LOTS 16-30, 110-128, & 132-146
 SECTION THREE
 "FENWICK HILLS"
 LOCATED IN THE STONEHOUSE DISTRICT OF
 JAMES CITY COUNTY,
 VIRGINIA
 MARCH 10, 2006

*NOTE: BOUNDARY LINE PER PB 85 ● PGS. 92-96 SHOWN HEREON AS A TO B, C TO D, AND E TO F IS HEREBY VACATED

3-10-2006
 GORDON L. JONES
 No. 001774
 LAND SURVEYOR

BAY DESIGN GROUP
 Engineering, Surveying & Land Planning
 www.baydesigngroup.com

Scale: 1" = 50'

SHEET 3 OF 4