

#060026718

LINE	BEARING	LENGTH
L1	S101°3'30"W	198.15'
L2	S79°27'00"E	55.66'
L3	N17°38'09"E	7.85'
L4	N10°29'45"W	13.64'
L5	N11°56'07"E	39.55'
L6	N25°47'32"E	20.00'
L7	N08°05'37"E	41.45'
L8	N23°49'07"E	78.79'
L9	N14°15'30"E	24.17'
L10	N53°02'33"W	8.39'
L11	N06°34'00"W	12.04'
L12	N22°04'09"E	21.99'
L13	N64°33'42"W	49.35'
L14	N28°12'17"E	75.50'
L15	N33°29'50"E	30.20'
L16	N57°35'34"E	25.56'
L17	N50°54'33"E	38.17'
L18	N35°47'26"E	24.90'
L19	N26°30'12"E	8.99'
L20	N02°59'28"E	9.09'
L21	N41°25'50"E	45.80'
L22	N51°11'41"E	31.00'
L23	N60°38'58"E	33.80'
L24	N66°57'59"E	33.34'
L25	N46°55'56"E	71.21'
L26	N35°05'36"E	32.55'
L27	N19°09'25"W	49.26'
L28	N64°08'23"W	11.11'
L29	S64°08'23"E	10.19'
L30	S19°08'23"E	46.98'
L31	N53°08'27"E	80.65'

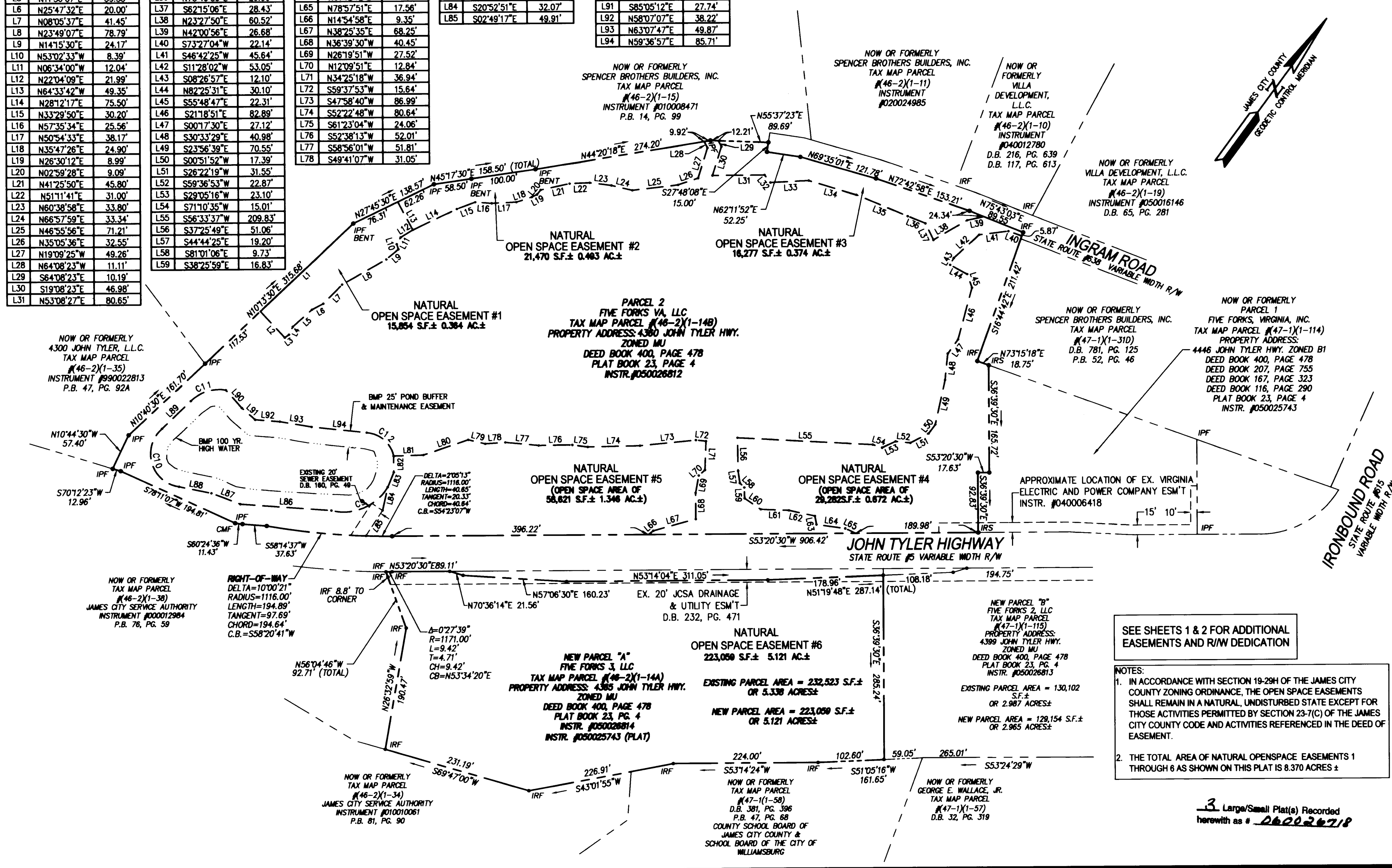
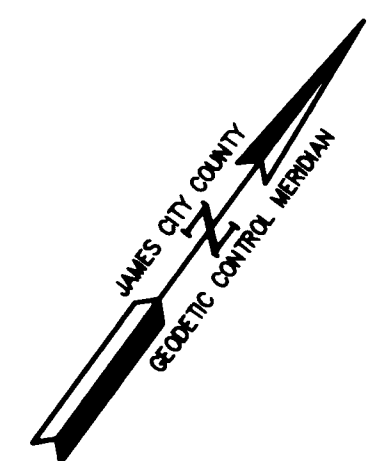
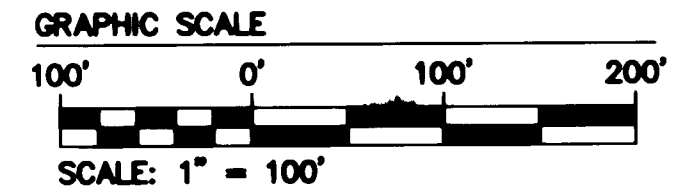
LINE	BEARING	LENGTH
L32	S73°58'44"E	14.79'
L33	N50°47'16"E	59.39'
L34	N70°13'28"E	77.02'
L35	N76°16'10"E	85.95'
L36	N75°46'59"E	29.66'
L37	S62°15'06"E	28.43'
L38	N23°27'50"E	60.52'
L39	N42°00'56"E	26.68'
L40	S73°27'04"W	22.14'
L41	S46°42'25"W	45.64'
L42	S11°28'02"W	53.05'
L43	S08°26'57"E	12.10'
L44	N82°25'31"E	30.10'
L45	S55°48'47"E	22.31'
L46	S21°18'51"E	82.89'
L47	S00°17'30"E	27.12'
L48	S30°33'29"E	40.98'
L49	S23°56'39"E	70.55'
L50	S00°51'52"W	17.39'
L51	S26°22'19"W	31.55'
L52	S59°36'53"W	22.87'
L53	S29°05'16"W	23.10'
L54	S71°10'35"W	15.01'
L55	S56°33'37"W	209.83'
L56	S37°25'49"E	51.06'
L57	S44°44'25"E	19.20'
L58	S81°01'06"E	9.73'
L59	S38°25'59"E	16.83'

LINE	BEARING	LENGTH
L60	N88°08'27"E	30.16'
L61	N55°51'44"E	43.64'
L62	N65°43'01"E	41.13'
L63	S46°58'01"E	13.40'
L64	N61°12'12"E	44.85'
L65	N78°52'51"E	17.56'
L66	N14°54'58"E	9.35'
L67	N38°25'35"E	68.25'
L68	N36°39'30"W	40.45'
L69	N26°19'51"W	27.52'
L70	N12°09'51"E	12.84'
L71	N34°25'18"W	36.94'
L72	S59°37'53"W	15.64'
L73	S47°58'40"W	86.99'
L74	S52°22'48"W	80.64'
L75	S61°23'04"W	24.06'
L76	S52°38'13"W	52.01'
L77	S58°56'01"W	51.81'
L78	S49°41'07"W	31.05'

LINE	BEARING	LENGTH
L79	S67°02'37"W	26.94'
L80	S34°53'27"W	73.36'
L81	S51°55'40"W	46.00'
L82	S36°58'07"E	25.00'
L83	S14°26'07"E	24.99'
L84	S20°52'51"E	32.07'
L85	S02°49'17"E	49.91'

LINE	BEARING	LENGTH
L86	S57°38'38"W	141.07'
L87	S74°30'01"W	47.99'
L88	S65°00'24"W	51.06'
L89	N09°56'06"E	61.59'
L90	S77°58'39"E	36.87'
L91	S85°05'12"E	27.74'
L92	N58°07'07"E	38.22'
L93	N63°07'47"E	49.87'
L94	N59°36'57"E	85.71'

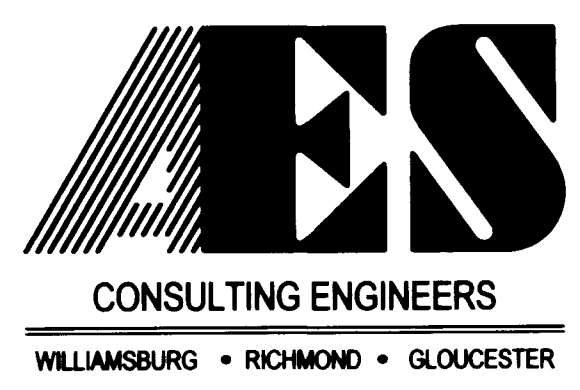
CURVE	DELTA	RADIUS	ARC	TANGENT	CHORD	CHORD BEARING
C9	73°12'10"	79.09	101.05	58.74	94.32	S31°08'44"W
C10	130°53'44"	51.56	117.80	112.87	93.80	N52°40'08"W
C11	55°04'12"	61.47	59.09	32.05	56.84	N36°18'40"E
C12	73°51'13"	45.89	59.15	34.49	55.14	S85°14'24"E



SEE SHEETS 1 & 2 FOR ADDITIONAL EASEMENTS AND R/W DEDICATION

- NOTES:
- IN ACCORDANCE WITH SECTION 19-29H OF THE JAMES CITY COUNTY ZONING ORDINANCE, THE OPEN SPACE EASEMENTS SHALL REMAIN IN A NATURAL, UNDISTURBED STATE EXCEPT FOR THOSE ACTIVITIES PERMITTED BY SECTION 23-7(C) OF THE JAMES CITY COUNTY CODE AND ACTIVITIES REFERENCED IN THE DEED OF EASEMENT.
 - THE TOTAL AREA OF NATURAL OPENSACE EASEMENTS 1 THROUGH 6 AS SHOWN ON THIS PLAT IS 8.370 ACRES ±

3 Large/Small Plat(s) Recorded herewith as # **060026718**



5248 Olde Towne Road, Suite 1
 Williamsburg, Virginia 23188
 (757) 253-0040
 Fax (757) 220-8994

PLAT TO ACCOMPANY
 RIGHT-OF-WAY DEDICATION TO VIRGINIA DEPARTMENT OF TRANSPORTATION FROM FIVE FORKS 2, LLC AND FIVE FORKS 3, LLC AND UTILITY EASEMENT FOR CONVEYANCE TO THE JAMES CITY SERVICE AUTHORITY FROM FIVE FORKS VA, LLC AND OPEN SPACE EASEMENTS FOR CONVEYANCE TO THE COUNTY OF JAMES CITY FROM FIVE FORKS VA, LLC AND FIVE FORKS 3, LLC AND PUBLIC USE EASEMENT FOR CONVEYANCE TO THE COUNTY OF JAMES CITY FROM FIVE FORKS VA, LLC, FIVE FORKS 2, LLC, AND FIVE FORKS 3, LLC

BERKELEY DISTRICT JAMES CITY COUNTY VIRGINIA



City of Williamsburg & County of James City				
Circuit Court:	This PLAT was recorded on 31 October 2006			
at 4:40 AM/PM:	PG 1			
DOCUMENT #	060026718			
BETSY B. WOOLRIDGE, CLERK				
<i>Betsy B. Woolridge</i> Clerk				
No.	DATE	REVISION / COMMENT / NOTE	AWT	GTW
1	9/12/06	REVISED PER JCC 7/21/06 & JCSA 7/19/06 COMMENTS	AWT	GTW
			REVIEWED BY	REVIEWED BY

Designed	AWP	Drawn	AWT
Scale	1"=100'	Date	6/8/06
Project No.	9263-4		
Drawing No.	3 of 3		

S:\luba\2006\104-GovGroveCondost\dwg\SunPlat\060026718.DWG, 10/05/2006 9:56:36 AM, mlke.morell