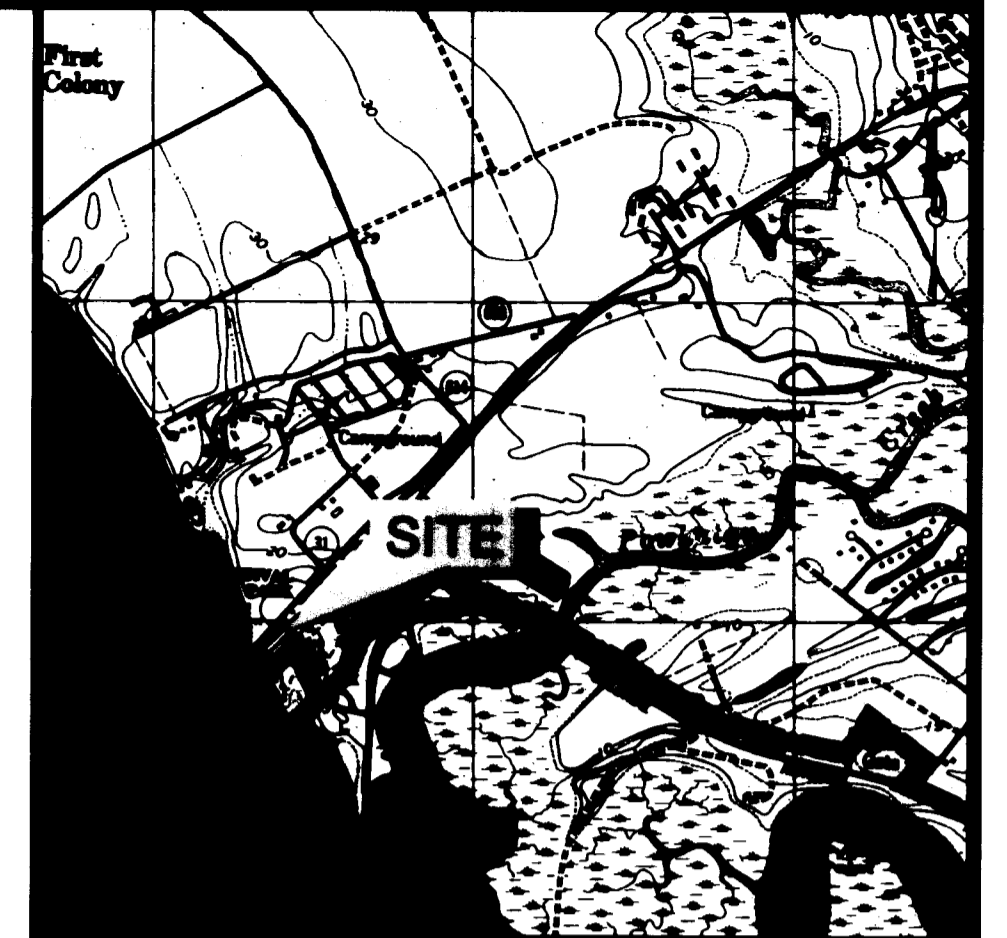


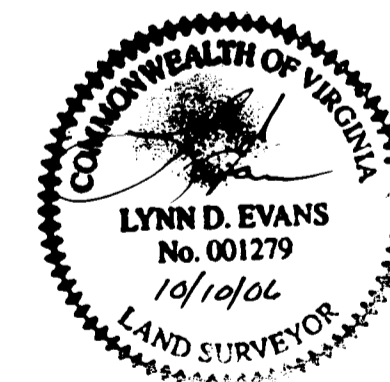
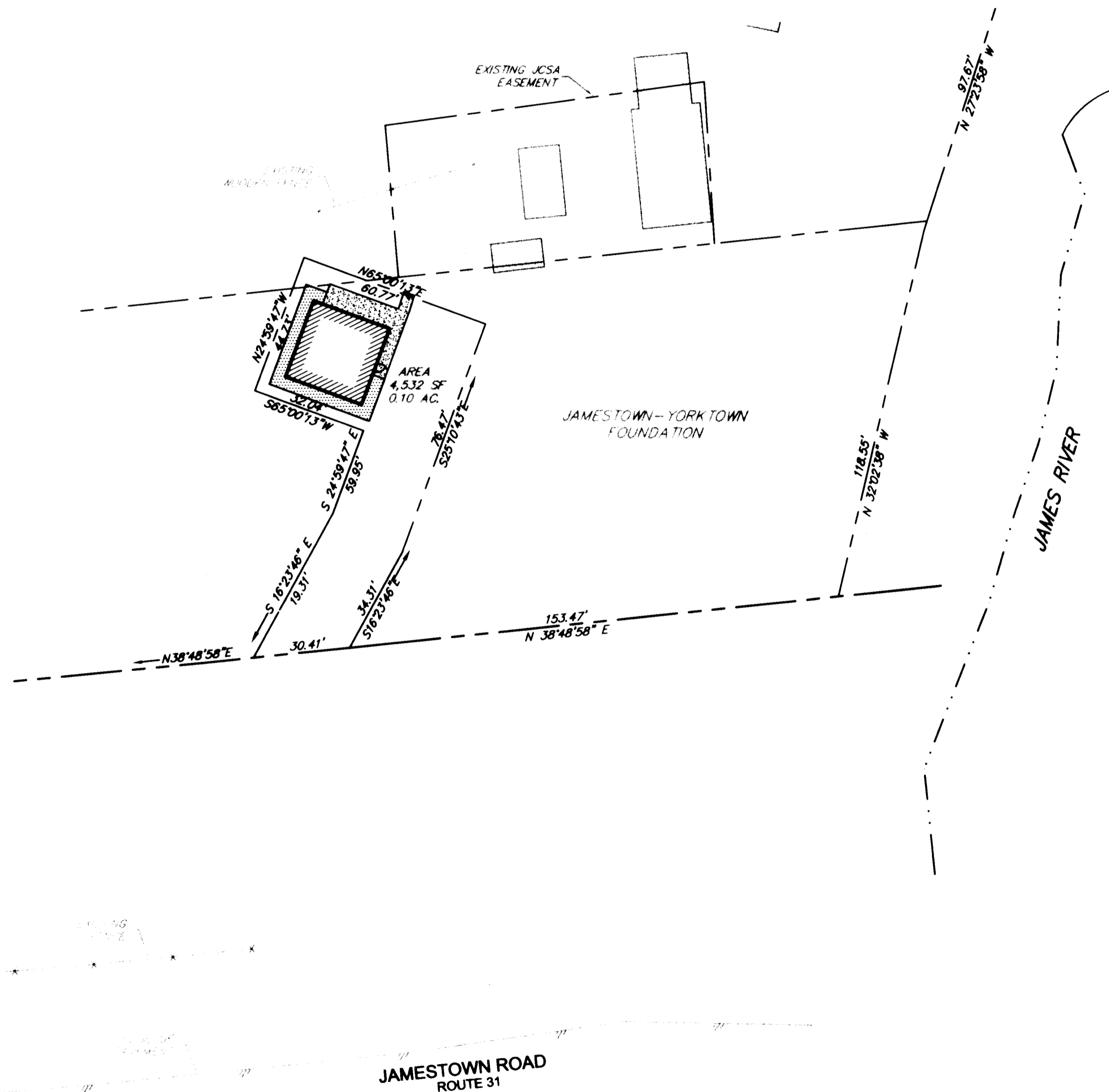
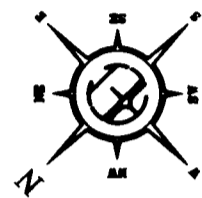
#060025418

PLAT OF EASEMENT TO BE DEDICATED TO JAMES CITY SERVICE AUTHORITY

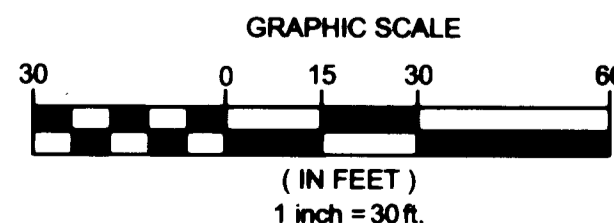
BY JAMESTOWN - YORKTOWN FOUNDATION
JAMES CITY COUNTY, VIRGINIA



VICINITY MAP
SCALE: 1" = 2000'



Large/Small Plat(s) Recorded
herewith as # 060025418



City of Williamsburg & County of James City
Circuit Court: This PLAT was recorded on
12 October 2006
at 8:50 AM/PM, PG. 1
DOCUMENT # 060025418
BETSY B. WOOLRIDGE, CLERK
Betsy B. Woolridge Clerk

Bury+Partners
ENGINEERING SOLUTIONS
4095 Ironbound Road, Suite 200
Williamsburg, Virginia 23185
Tel. (757) 229-1776 Fax (757) 229-4683
Bury+Partners, Inc. ©Copyright 2006

Checked By: LDE	Drawn By: DRD	Scale: 1"=30'	Date: 2/24/06	Project No.: 04149
--------------------	------------------	------------------	------------------	-----------------------