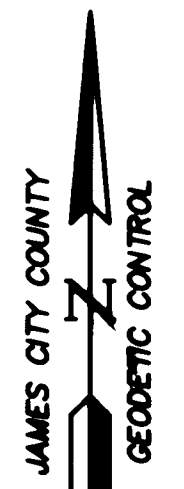
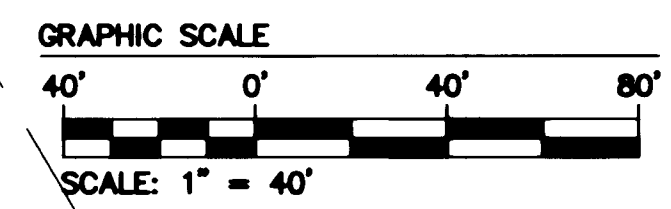
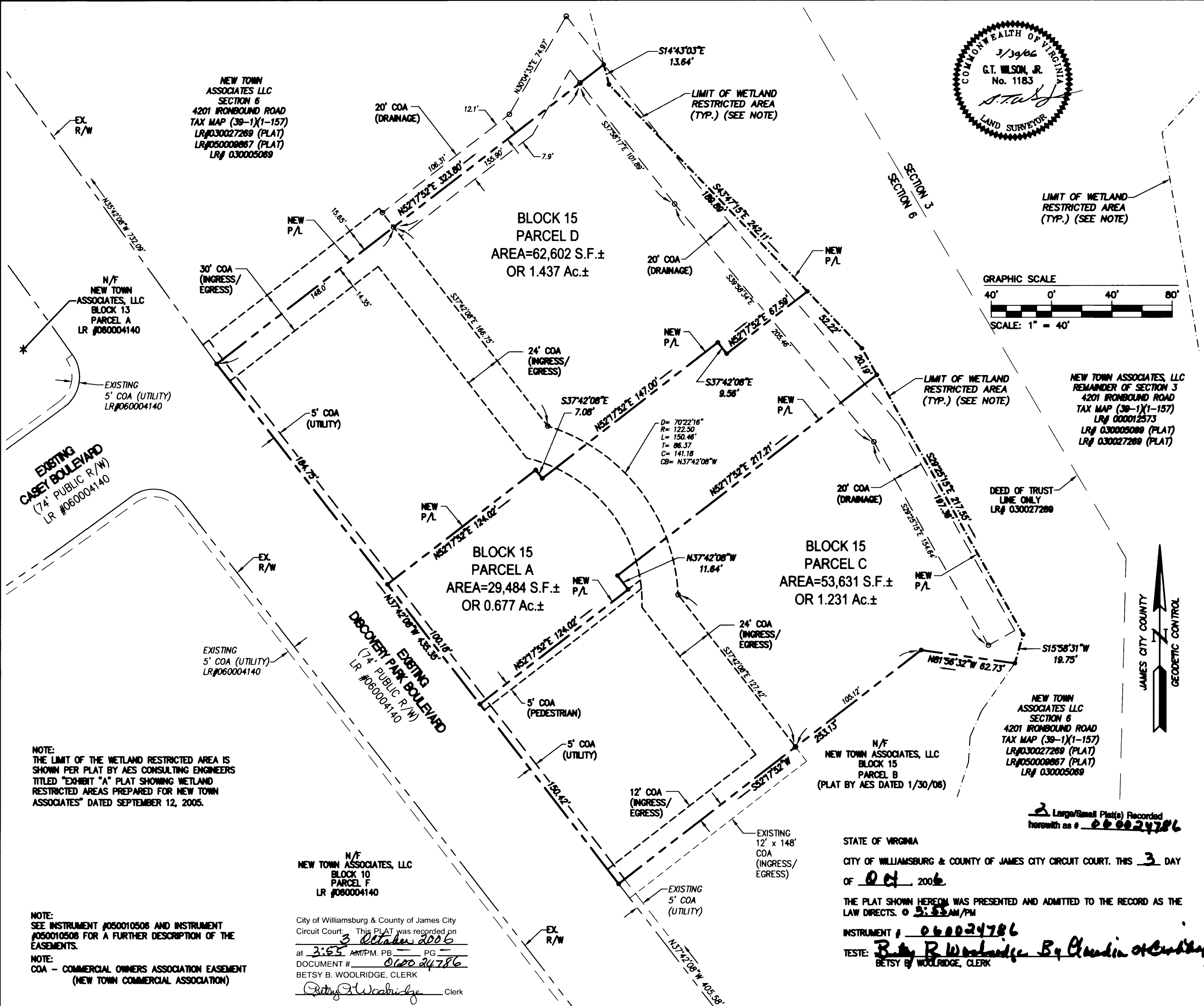


#060024786



NOTE: THE LIMIT OF THE WETLAND RESTRICTED AREA IS SHOWN PER PLAT BY AES CONSULTING ENGINEERS TITLED "EXHIBIT "A" PLAT SHOWING WETLAND RESTRICTED AREAS PREPARED FOR NEW TOWN ASSOCIATES" DATED SEPTEMBER 12, 2005.

NOTE: SEE INSTRUMENT #050010506 AND INSTRUMENT #050010508 FOR A FURTHER DESCRIPTION OF THE EASEMENTS.
NOTE: COA - COMMERCIAL OWNERS ASSOCIATION EASEMENT (NEW TOWN COMMERCIAL ASSOCIATION)

N/F NEW TOWN ASSOCIATES, LLC
BLOCK 10
PARCEL F
LR #060004140

City of Williamsburg & County of James City
Circuit Court: This PLAT was recorded on
3 October 2006
at 3:55 AM/PM. PB _____ PG _____
DOCUMENT # 060024786
BETSY B. WOOLRIDGE, CLERK
Betsy B. Woolridge Clerk

STATE OF VIRGINIA
CITY OF WILLIAMSBURG & COUNTY OF JAMES CITY CIRCUIT COURT. THIS 3 DAY
OF Oct 2006

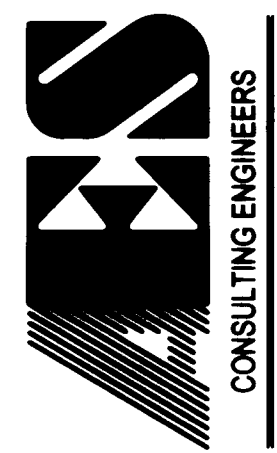
THE PLAT SHOWN HEREON WAS PRESENTED AND ADMITTED TO THE RECORD AS THE
LAW DIRECTS. @ 3:55 AM/PM

INSTRUMENT # 060024786
TESTE: Betsy B. Woolridge By Chandia H. Woolridge
BETSY B. WOOLRIDGE, CLERK

2 Large/Small Plat(s) Recorded
herewith as # 060024786

No.	DATE	REVISION / COMMENT / NOTE	JFS	BY
1	8/7/06			

5248 Olde Towne Road, Suite 1
Williamsburg, Virginia 23188
(757) 253-0040
Fax (757) 220-8994



CONSULTING ENGINEERS
WILLIAMSBURG • RICHMOND • GLOUCESTER

PLAT OF SUBDIVISION
BLOCK 15 PARCELS A, C, AND D
BEING A PORTION OF SECTION 6
NEW TOWN
OWNED BY NEW TOWN ASSOCIATES, LLC
BERKELEY DISTRICT COUNTY OF JAMES CITY VIRGINIA

Designed AES	Drawn JFS
Scale 1"=40'	Date 3/30/06
Project No. 6632-S6-15	
Drawing No. 2 OF 2	