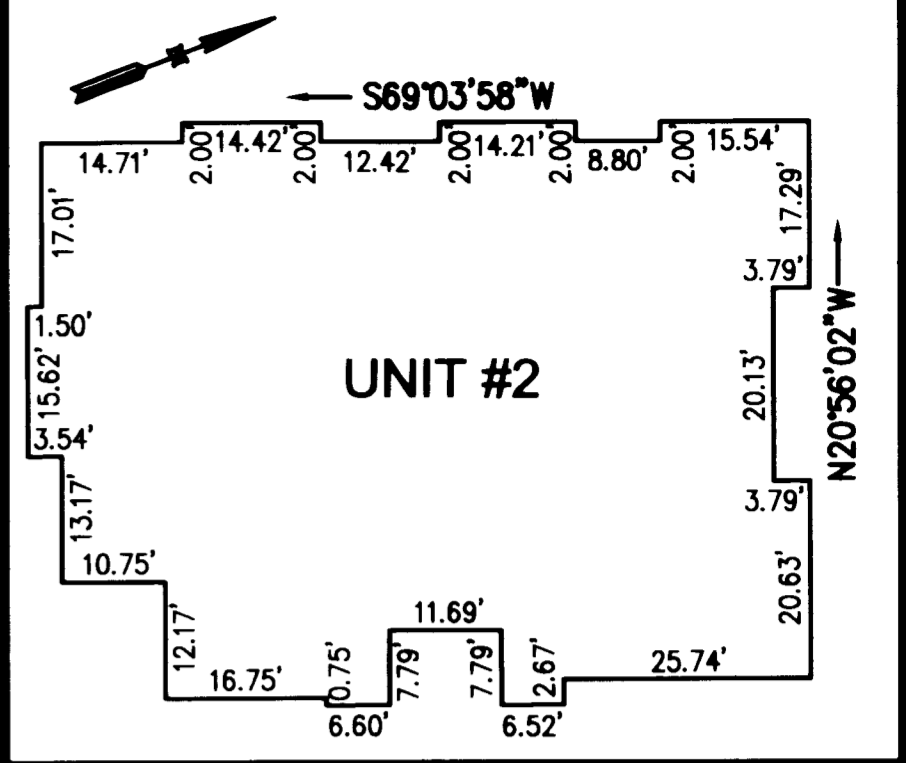
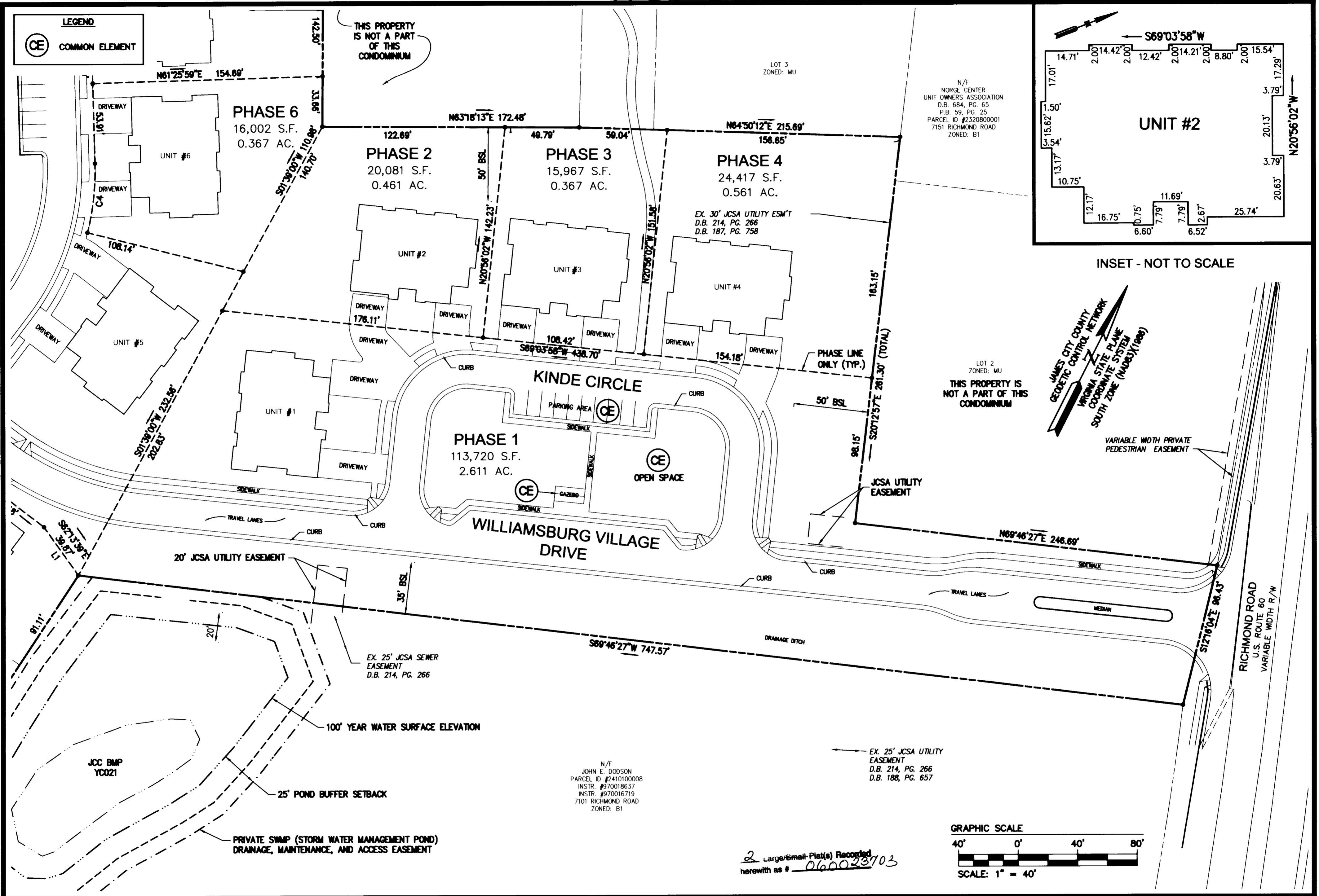
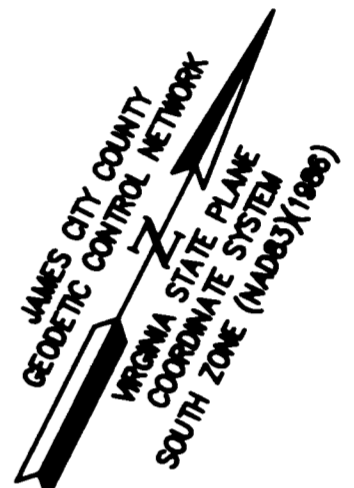


#060023703



INSET - NOT TO SCALE



VARIABLE WIDTH PRIVATE PEDESTRIAN EASEMENT

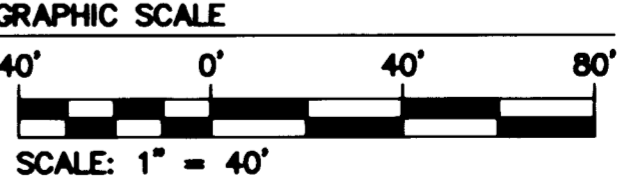
LOT 2 ZONED: MU THIS PROPERTY IS NOT A PART OF THIS CONDOMINIUM

N/E NORGE CENTER UNIT OWNERS ASSOCIATION D.B. 684, PG. 65 P.B. 59, PG. 25 PARCEL ID #2320800001 7151 RICHMOND ROAD ZONED: B1

JCSA UTILITY EASEMENT

EX. 25' JCSA UTILITY EASEMENT D.B. 214, PG. 266 D.B. 188, PG. 657

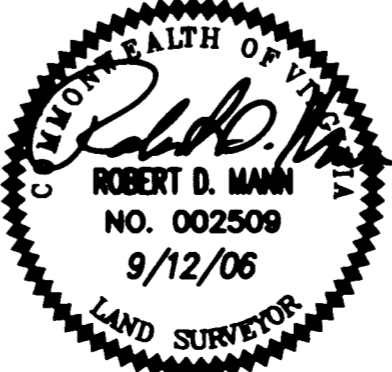
N/F JOHN E. DODSON PARCEL ID #2410100008 INSTR. #970018637 INSTR. #970016719 7101 RICHMOND ROAD ZONED: B1



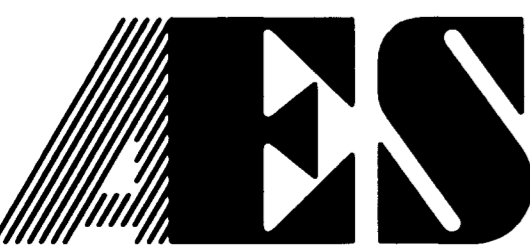
2 Large/Small Plat(s) Recorded herewith as # 060023703

"EXHIBIT 1"

PLAT OF CONDOMINIUM
WILLIAMSBURG VILLAGE AT NORGE CONDOMINIUM
 PHASE 2, UNIT #2
 STONEHOUSE DISTRICT COUNTY OF JAMES CITY VIRGINIA



No.	DATE	REVISION / COMMENT / NOTE	REVIEWED BY	REVIEWED BY



CONSULTING ENGINEERS

5248 Olde Towne Road, Suite 1
Williamsburg, Virginia 23188
(757) 253-0040
Fax (757) 220-8994

Designed VMB/JAG/aw	Drawn JAG/aw
Scale 1" = 40'	Date 9/12/06
Project No. 9286-2	
Drawing No. 2 of 2	