

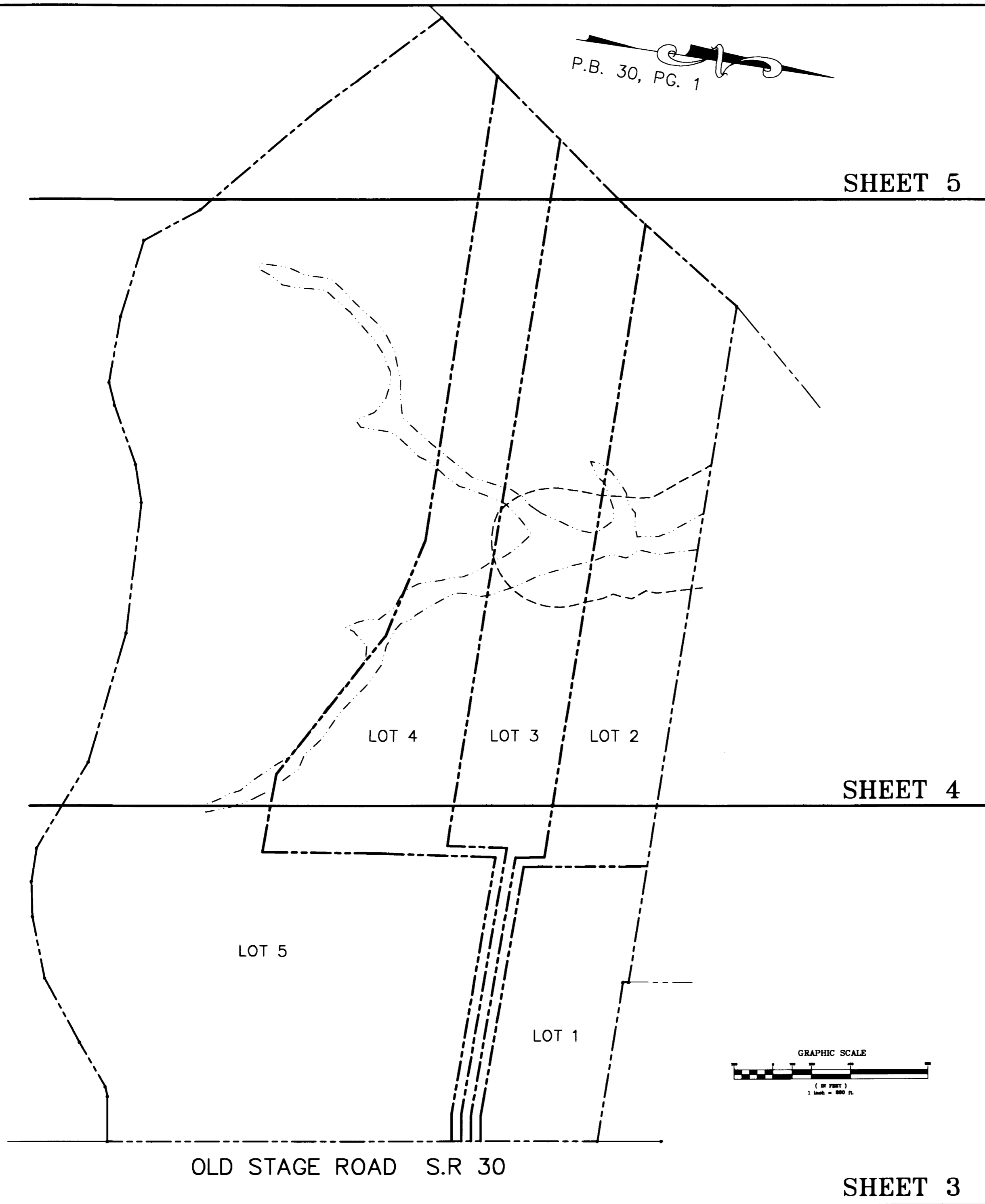
#060022197

P.B. 30, PG. 1

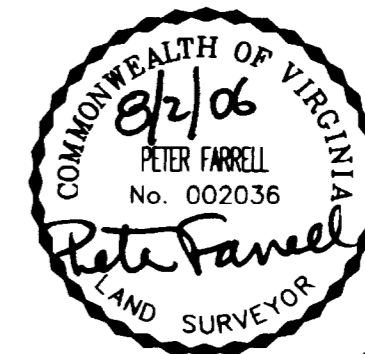
SHEET 5

SHEET 4

SHEET 3



THIS PLAT CORRECTS THE EXISTING PROPERTY LINE FROM POINT "A" TO "B" BETWEEN LOT 5 AND THE PROPERTY NOW OR FORMERLY JOHNATHAN KINNEY, TRS. THE AREA OF LOT 5 IS REVISED ACCORDINGLY.



City of Williamsburg & County of James City  
 Circuit Court: This PLAT was recorded on 31 August 2006  
 at 10:44 AM/PM, PG. 5  
 DOCUMENT # 060022197  
 BETSY B. WOOLRIDGE, CLERK  
*Betsy B. Woolridge* Clerk

**PLAT OF CORRECTION**  
**SUBDIVISION OF**  
**LOTS 1, 2, 3, 4 & 5**  
**BEING THE PROPERTY OF**  
**TOANO BUSINESS CENTRE, L.L.C.**  
**RECORDED AS DOC. NO. 050008445**

**STONEHOUSE DISTRICT,**  
**JAMES CITY COUNTY, VIRGINIA**  
**DATE: AUG. 2, 2006 SCALE: 1"=200'**  
**SHEET 2 OF 5**

**5** Large/Small Plat(s) Recorded  
 herewith as # **060022197**

**LANDMARK**  
**DESIGN GROUP**  
 Engineers • Planners • Surveyors  
 Landscape Architects • Environmental Consultants

4029 Ironbound Road  
 Suite 100  
 Williamsburg, VA 23188  
 Tel. (757) 253-2975  
 Fax (757) 229-0049  
 Email: [imd@landmarkdg.com](mailto:imd@landmarkdg.com)

5544 Greenwich Road  
 Suite 200  
 Virginia Beach, VA 23462  
 Tel. (757) 473-2000  
 Fax (757) 497-7933  
 Email: [imd@landmarkdg.com](mailto:imd@landmarkdg.com)

SHEET INDEX

DRAWN BY : AST  
CHKD. BY : PF

PROJ. NO. : 2004085-100.03  
DWG. NO. : 15610DW