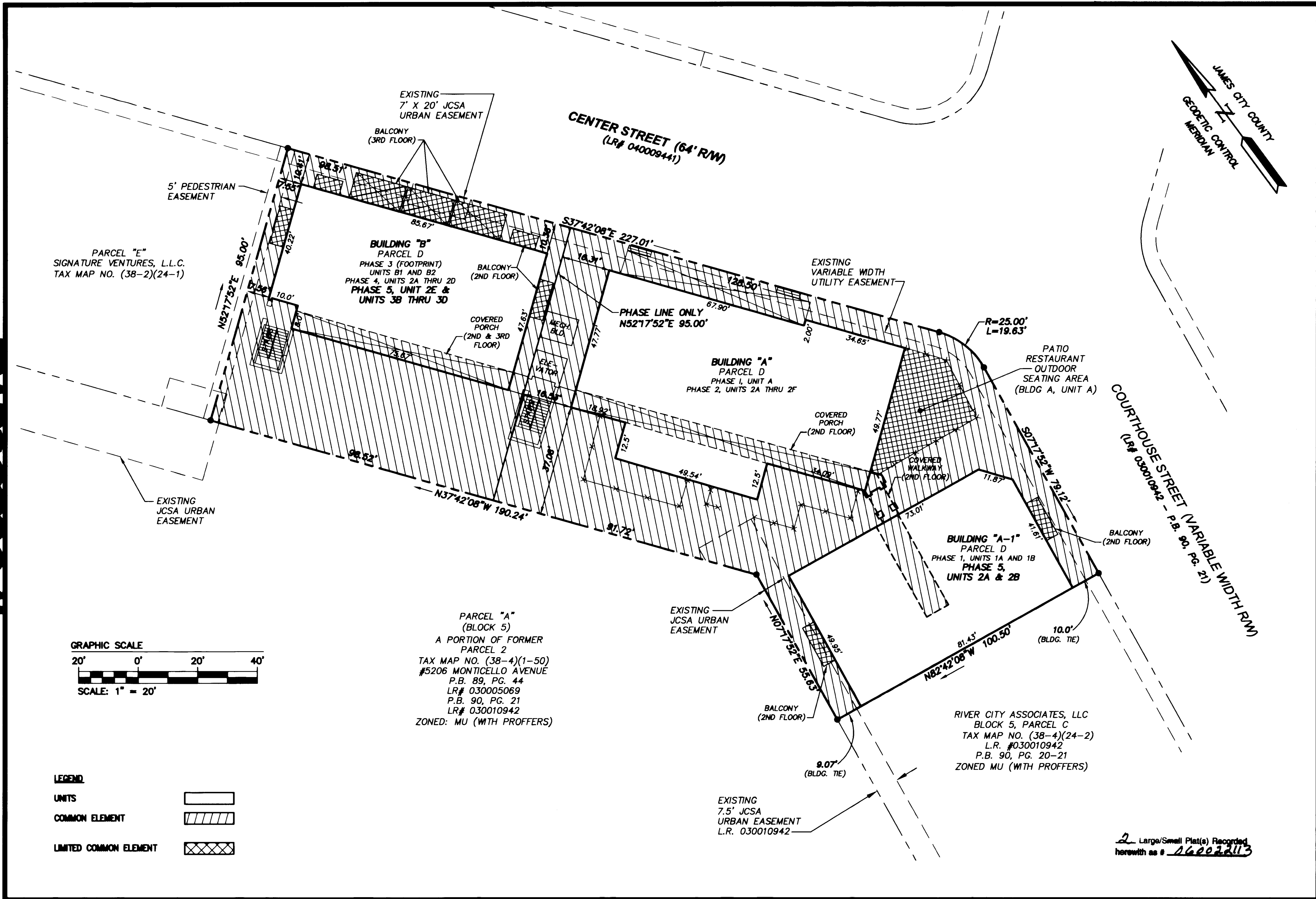
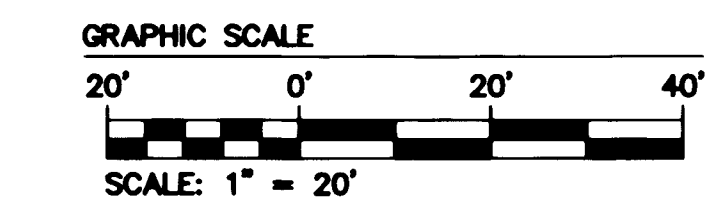


#060022113



PARCEL "E"
SIGNATURE VENTURES, L.L.C.
TAX MAP NO. (38-2)(24-1)



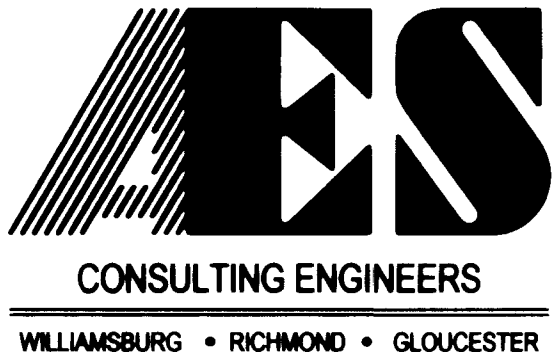
PARCEL "A"
(BLOCK 5)
A PORTION OF FORMER
PARCEL 2
TAX MAP NO. (38-4)(1-50)
#5206 MONTICELLO AVENUE
P.B. 89, PG. 44
LR# 030005069
P.B. 90, PG. 21
LR# 030010942
ZONED: MU (WITH PROFFERS)

RIVER CITY ASSOCIATES, LLC
BLOCK 5, PARCEL C
TAX MAP NO. (38-4)(24-2)
L.R. #030010942
P.B. 90, PG. 20-21
ZONED MU (WITH PROFFERS)

LEGEND

UNITS	
COMMON ELEMENT	
LIMITED COMMON ELEMENT	

2 Large/Small Plat(s) Recorded
herewith as # 060022113



5248 Olde Towne Road, Suite 1
Williamsburg, Virginia 23188
(757) 253-0040
Fax (757) 220-8994

EXHIBIT B
PLAT OF CONDOMINIUM
NEW TOWN CENTER STREET CONDOMINIUMS
PHASE 5
BUILDING "B", UNIT 2E & UNITS 3B THRU 3D
AND BUILDING "A-1", UNITS 2A & 2B

BERKELEY DISTRICT JAMES CITY COUNTY VIRGINIA



City of Williamsburg & County of James City Circuit Court: This PLAT was recorded on <u>30 August 2006</u> at <u>11:54</u> AM/PM, PB <u>—</u> PG <u>—</u> DOCUMENT # <u>060022113</u> BETSY B. WOOLRIDGE, CLERK <u>Betsy B. Woolridge</u> Clerk			
No.	DATE	REVISION / COMMENT / NOTE	BY

Designed AES	Drawn AES/CMA
Scale 1"=20'	Date 8/14/06
Project No. 6632-E-10-3	
Drawing No. 2 OF 2	