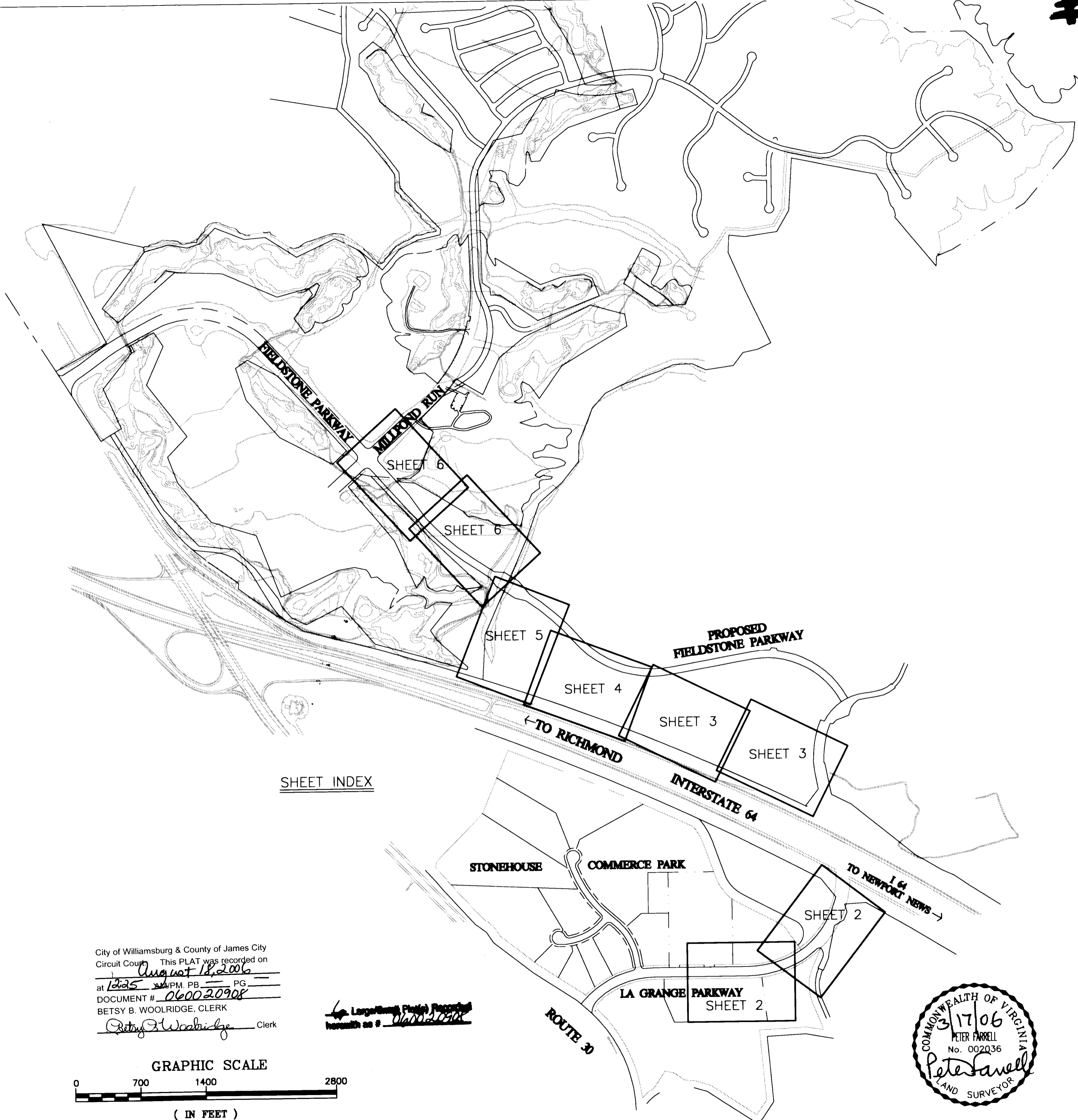


# #060020908



LIST OF OWNERS CONVEYING EASEMENT

SHEET#2	COMMERCE PARK AT STONEHOUSE, L.L.C.
SHEET#3	STONEHOUSE GLEN, L.L.C.
SHEET#4	STONEHOUSE GLEN, L.L.C.
SHEET#5	STONEHOUSE GLEN, L.L.C.
POINT 'A' TO 'B'	FIELDSTONE INVESTMENT, L.L.C.
POINT 'B' TO 'C'	FIELDSTONE INVESTMENT, L.L.C.
SHEET#6	FIELDSTONE INVESTMENT, L.L.C.

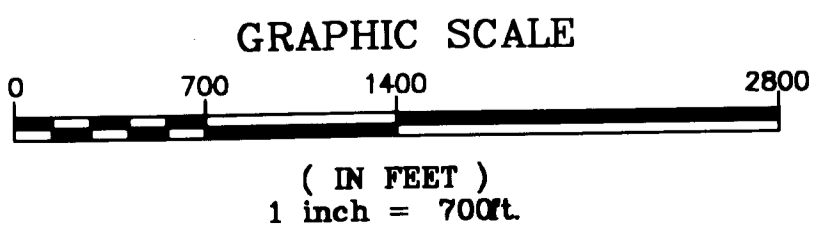
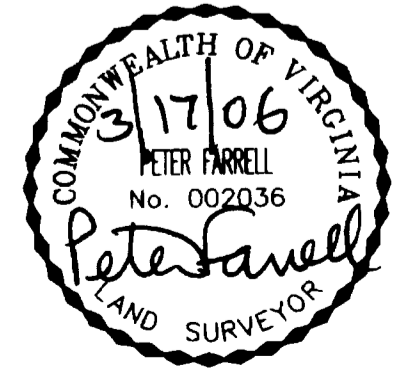
NOTE:  
 THE TERMS OF THE JCSA UTILITY EASEMENT SHOWN ON THIS PLAT SHALL BE IN ACCORDANCE WITH THE DEED OF EASEMENT, DATED APRIL 6, 2006 BY AND BETWEEN FIELDSTONE INVESTMENT, LLC, STONEHOUSE GLEN, LLC, COMMERCE PARK AT STONEHOUSE, LLC AND THE JAMES CITY SERVICE AUTHORITY RECORDED SIMULTANEOUSLY WITH THIS PLAT.

CURVE TABLE						
CURVE	LENGTH	RADIUS	TANGENT	CHORD	CHORD BEARING	DELTA
C1	1007.20'	24811.33'	503.67'	1007.13'	N64°29'12"W	2°19'33"
C2	1102.13'	24811.33'	551.15'	1102.03'	N66°55'20"W	2°32'42"
C3	1076.22'	24811.33'	538.19'	1076.13'	N69°26'15"W	2°29'07"
C4	309.10'	24811.33'	154.55'	309.10'	N71°02'13"W	0°42'50"
C5	279.92'	966.00'	140.95'	278.94'	N80°10'45"E	16°36'10"

PLAT SHOWING  
 UTILITY EASEMENT  
 TO BE DEDICATED TO  
 JAMES CITY SERVICE  
 AUTHORITY  
 STONEHOUSE DISTRICT  
 JAMES CITY COUNTY, VIRGINIA  
 DATE: 3/17/06 SCALE 1"=700'  
 SHEET 1 OF 6

City of Williamsburg & County of James City  
 Circuit Court This PLAT was recorded on  
 August 18, 2006  
 at 10:25 AM, P.M. PG. 1  
 DOCUMENT # 060020908  
 BETSY B. WOOLRIDGE, CLERK  
 Betsy B. Woolridge Clerk

Large-Scale Plats Recorded  
 hereunder as # 060020908

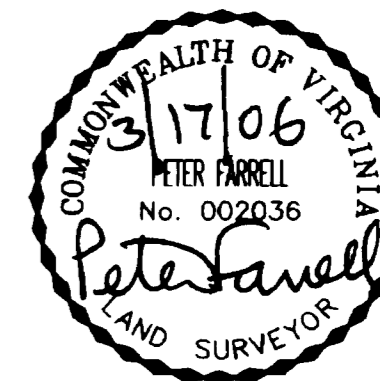


**LANDMARK**  
**DESIGN GROUP**  
 Engineers • Planners • Surveyors  
 Landscape Architects • Environmental Consultants

4029 Ironbound Road  
 Suite 100  
 Williamsburg, VA 23188  
 Tel. (757) 253-2975  
 Fax (757) 229-0049  
 Email: lmdg@landmarkdg.com

#060020908

PLAT SHOWING  
UTILITY EASEMENT  
TO BE DEDICATED TO  
JAMES CITY SERVICE AUTHORITY  
AT STONEHOUSE  
STONEHOUSE DISTRICT  
JAMES CITY COUNTY, VIRGINIA  
DATE: 3/17/06 SCALE 1"=50'  
SHEET 2 OF 6



ROUTE 30

N/F  
LA GRANGE HOLDINGS, L.L.C.  
PARCEL ID: 1210100042  
DOC: 040024595

N/F  
COMMERCE PARK AT STONEHOUSE, L.L.C.  
PARCEL ID: 0640100001  
DOC: 020030024

WEST R/W LINE  
OF STATE ROUTE 30

EXISTING 20'  
UTILITY EASEMENT  
P.B.62, PG. 94-96

1774'± TO STATE ROUTE 30  
1006'± TO WESTMONT DRIVE

704.82'  
S00°00'00"E 729.82'

VARIABLE  
WIDTH JCSA  
UTILITY EASEMENT

N 3677519.00  
E 11975611.37

N89°14'56"E

191.98'

S50°34'42"E  
14.11'

7.5'

65'

N 3677477.86  
E 11975133.64

EASEMENT BASELINE

LA GRANGE PARKWAY  
(100' R/W)

LA GRANGE PARKWAY  
(VARIABLE WIDTH R/W)

N/F  
LIBERTY PROPERTY LIMITED PARTNERSHIP  
PARCEL ID: 1220100026  
DOC: 040003209

N/F  
CITIZENS AND FARMERS BANK  
PARCEL ID: 1210100041  
DOC: 040025385

MATCHLINE SEE THIS SHEET

N 3677519.00  
E 11975611.37

N49°07'58"E  
99.70'

N51°00'49"E  
93.23'

N37°16'29"E

7.5'

15' JCSA UTILITY EASEMENT

651.89'

N48°31'29"E  
100.16'

22.64'

S38°18'38"E

232.39'

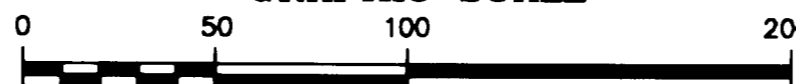
INTERSTATE 64  
(VARIABLE WIDTH R/W)

255.03'

N/F  
COMMERCE PARK AT STONEHOUSE L.L.C.  
PARCEL ID: 0640100001  
DOC: 020030024

LA GRANGE PARKWAY  
(VARIABLE WIDTH R/W)

GRAPHIC SCALE



( IN FEET )  
1 inch = 50 ft.

LANDMARK

DISCORPORATION  
Engineers • Planners • Surveyors  
Landscape Architects • Environmental Consultants

4029 Ironbound Road  
Suite 100  
Williamsburg, VA 23188  
Tel. (757) 253-2975  
Fax (757) 229-0049  
Email: lmdg@landmarkdkg.com

City of Williamsburg & County of James City  
Circuit Court: This PLAT was recorded on

August 18, 2006

at 12:25 P.M. P.B. PG.

DOCUMENT # 060020908

BETSY B. WOOLRIDGE, CLERK

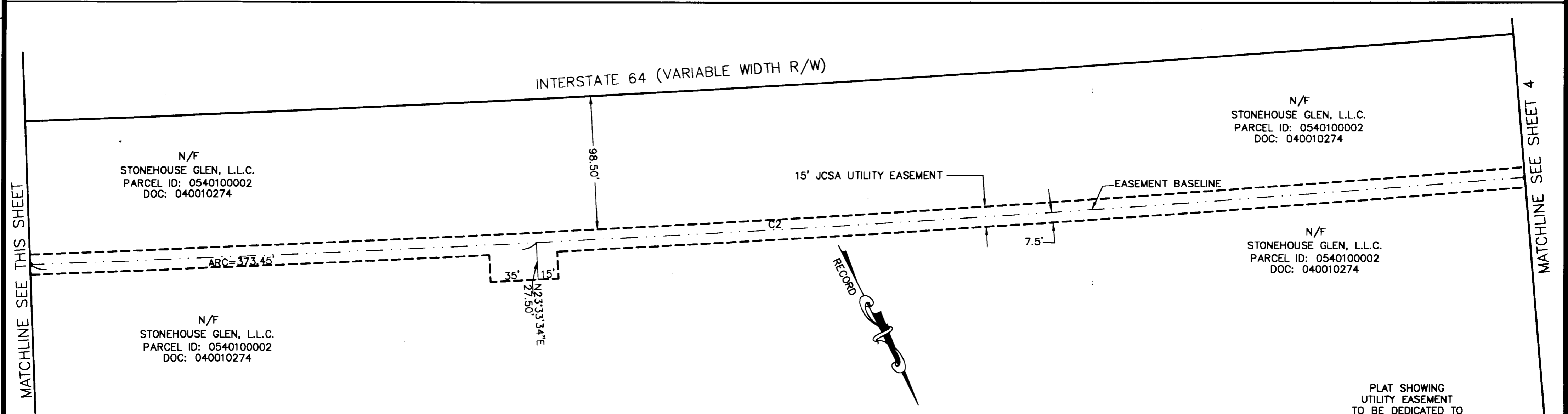
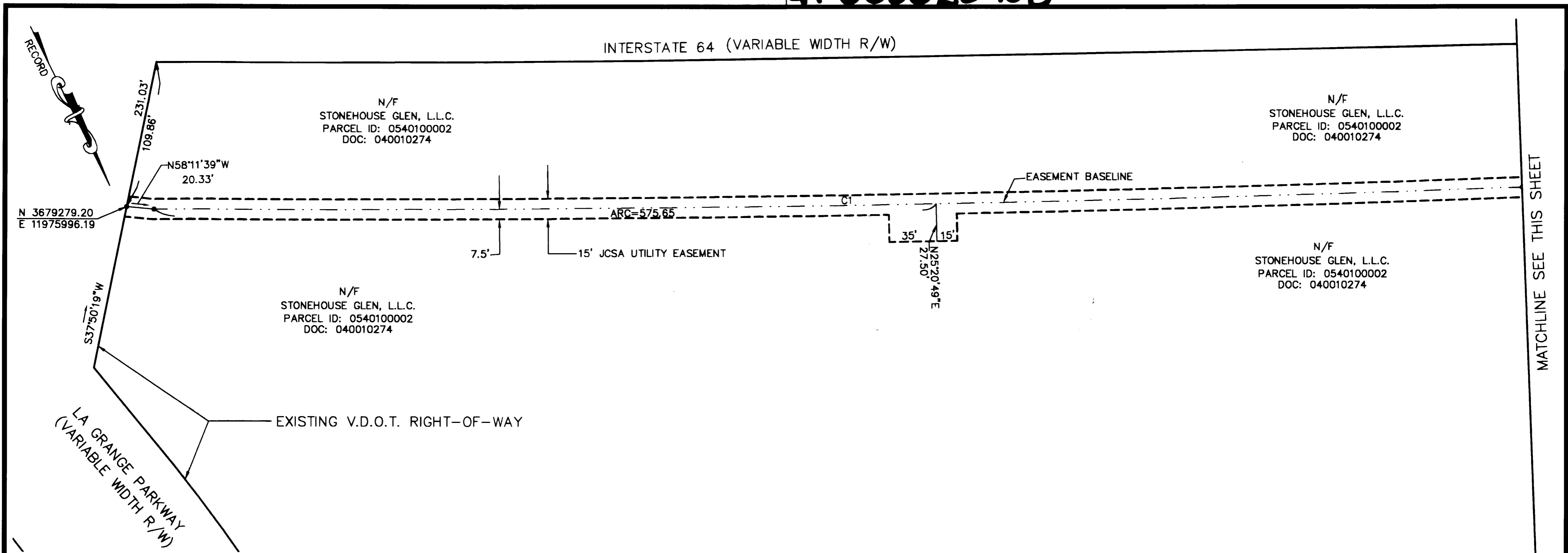
*Betsy B. Woolridge* Clerk

6 Large (Small Plats) Recorded  
herein as # 060020908

DRAWN BY: CRO  
CHKD BY: PF

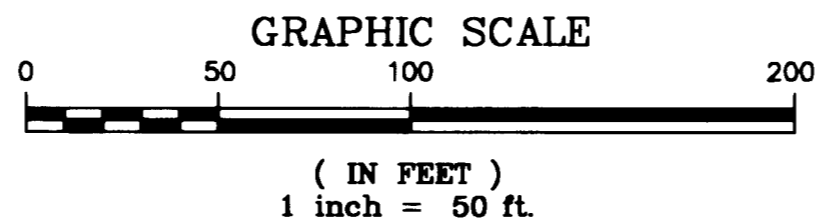
PROJ. NO.: 2002261-500.14  
DWG. NO.: 16305W

#060020908



City of Williamsburg & County of James City  
 Circuit Court: This PLAT was recorded on  
August 18, 2006  
 at 12:25 AM/PM, PB \_\_\_\_\_ PG \_\_\_\_\_  
 DOCUMENT # 060020908  
 BETSY B. WOOLRIDGE, CLERK  
*Betsy B. Woolridge* Clerk

6 Large/Small Plat(s) Recorded  
 herewith as # 060020908



PLAT SHOWING  
 UTILITY EASEMENT  
 TO BE DEDICATED TO  
 JAMES CITY SERVICE AUTHORITY  
 AT STONEHOUSE  
 STONEHOUSE DISTRICT  
 JAMES CITY COUNTY, VIRGINIA  
 DATE: 3/17/06 SCALE 1"=50'  
 SHEET 3 OF 6

**LANDMARK**  
 DESIGN GROUP  
 Engineers • Planners • Surveyors  
 Landscape Architects • Environmental Consultants  
 4029 Ironbound Road  
 Suite 100  
 Williamsburg, VA 23188  
 Tel. (757) 253-2975  
 Fax (757) 229-0049  
 Email: lmdg@landmarkdg.com

#060020908

INTERSTATE 64 (VARIABLE WIDTH R/W)

N/F  
STONEHOUSE GLEN, L.L.C.  
PARCEL ID: 0540100002  
DOC: 040010274

N/F  
STONEHOUSE GLEN, L.L.C.  
PARCEL ID: 0540100002  
DOC: 040010274

N/F  
STONEHOUSE GLEN, L.L.C.  
PARCEL ID: 0540100002  
DOC: 040010274

N/F  
STONEHOUSE GLEN, L.L.C.  
PARCEL ID: 0540100002  
DOC: 040010274

15' JCSA UTILITY EASEMENT

EASEMENT BASELINE

EXISTING LOCATION OF  
SANITARY FORCE MAIN

ARC=71.32'

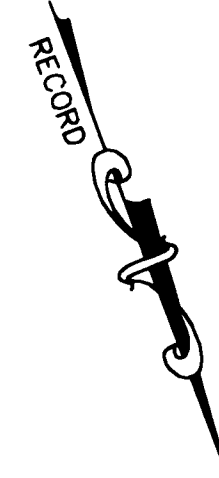
ARC=204.90'

35'  
27.50'  
N1°38'26"E

35'  
27.50'  
N1°47'35"E

MATCHLINE SEE SHEET 3

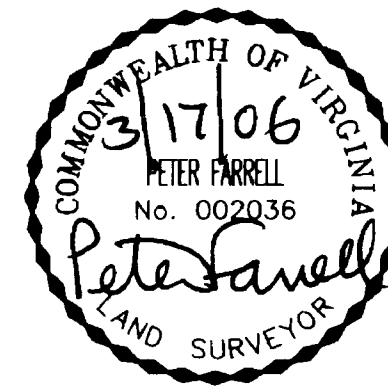
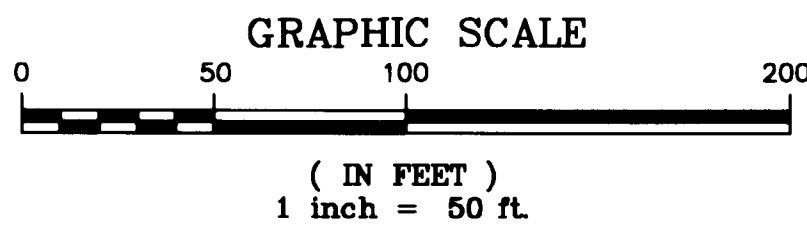
MATCHLINE SEE SHEET 5



PLAT SHOWING  
UTILITY EASEMENT  
TO BE DEDICATED TO  
JAMES CITY SERVICE AUTHORITY  
AT STONEHOUSE  
STONEHOUSE DISTRICT  
JAMES CITY COUNTY, VIRGINIA  
DATE: 3/17/06 SCALE 1"=50'  
SHEET 4 OF 6

City of Williamsburg & County of James City  
Circuit Court. This PLAT was recorded on  
August 18, 2006  
at 12:25 AM/PM, PG       
DOCUMENT # 060020908  
BETSY B. WOOLRIDGE, CLERK  
Betsy B. Woolridge Clerk

6 Large/Small Plats Registered  
herewith as # 060020908



**LANDMARK**  
DESIGN GROUP  
4029 Ironbound Road  
Suite 100  
Williamsburg, VA 23188  
Tel. (757) 253-2975  
Fax (757) 229-0049  
Email: lmdg@landmarkdg.com  
Engineers • Planners • Surveyors  
Landscape Architects • Environmental Consultants

DRAWN BY : CRO  
CHKD BY : PF  
PROJ. NO. : 2002261-500.14  
DWG. NO. : 16307W

#060020908

MATCHLINE SEE SHEET 6

N/F  
FIELDSTONE INVESTMENT, L.L.C.  
PARCEL ID: 0440100025  
DOC: 040010273

N/F  
STONEHOUSE GLEN, L.L.C.  
PARCEL ID: 0540100002  
DOC: 040010274

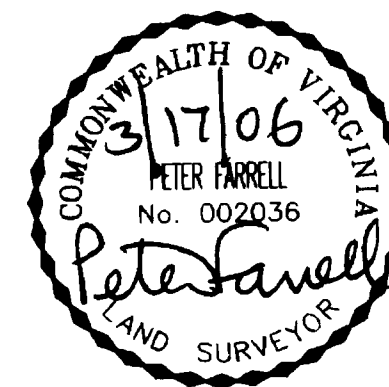
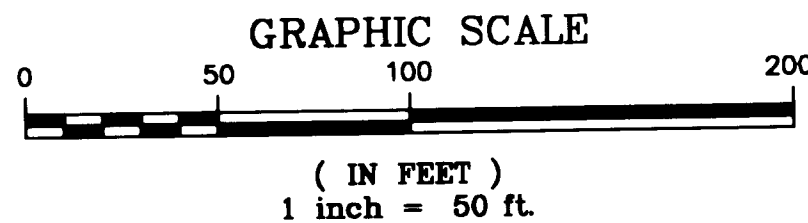
N/F  
STONEHOUSE GLEN, L.L.C.  
PARCEL ID: 0540100002  
DOC: 040010274

N/F  
STONEHOUSE GLEN, L.L.C.  
PARCEL ID: 0540100002  
DOC: 040010274

N/F  
STONEHOUSE GLEN, L.L.C.  
PARCEL ID: 0540100002  
DOC: 040010274

City of Williamsburg & County of James City  
Circuit Court: This PLAT was recorded on  
August 18, 2006  
at 12:25 AM/PM, PB \_\_\_\_\_ PG \_\_\_\_\_  
DOCUMENT # 060020908  
BETSY B. WOOLRIDGE, CLERK  
Betsy B. Woolridge Clerk

Large/Small Plat(s) Recorded  
herewith as # \_\_\_\_\_

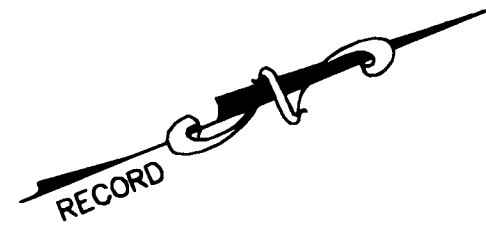


PLAT SHOWING  
UTILITY EASEMENT  
TO BE DEDICATED TO  
JAMES CITY SERVICE AUTHORITY  
AT STONEHOUSE  
STONEHOUSE DISTRICT  
JAMES CITY COUNTY, VIRGINIA  
DATE: 3/17/06 SCALE 1"=50'  
SHEET 5 OF 6

**LANDMARK**  
DESIGN GROUP  
Engineers • Planners • Surveyors  
Landscape Architects • Environmental Consultants  
4029 Ironbound Road  
Suite 100  
Williamsburg, VA 23188  
Tel. (757) 253-2975  
Fax (757) 229-0049  
Email: lmdg@landmarkdg.com

DRAWN BY : CRO  
CHKD. BY : PF

PROJ. NO. : 2002261-500.14  
DWG. NO. : 16392W



INTERSTATE 64 (VARIABLE WIDTH R/W)

N 3680634.09  
E 11972756.25

98.5'

MATCHLINE SEE SHEET 4

15' JCSA UTILITY EASEMENT

EASEMENT BASELINE

7.5'

324.01'

N26°56'25"E  
172.23'

N11°28'45"W  
33.25'

N57°34'49"W

216.83'

N07°41'58"W  
126.38'

N10°52'52"W  
19.43'

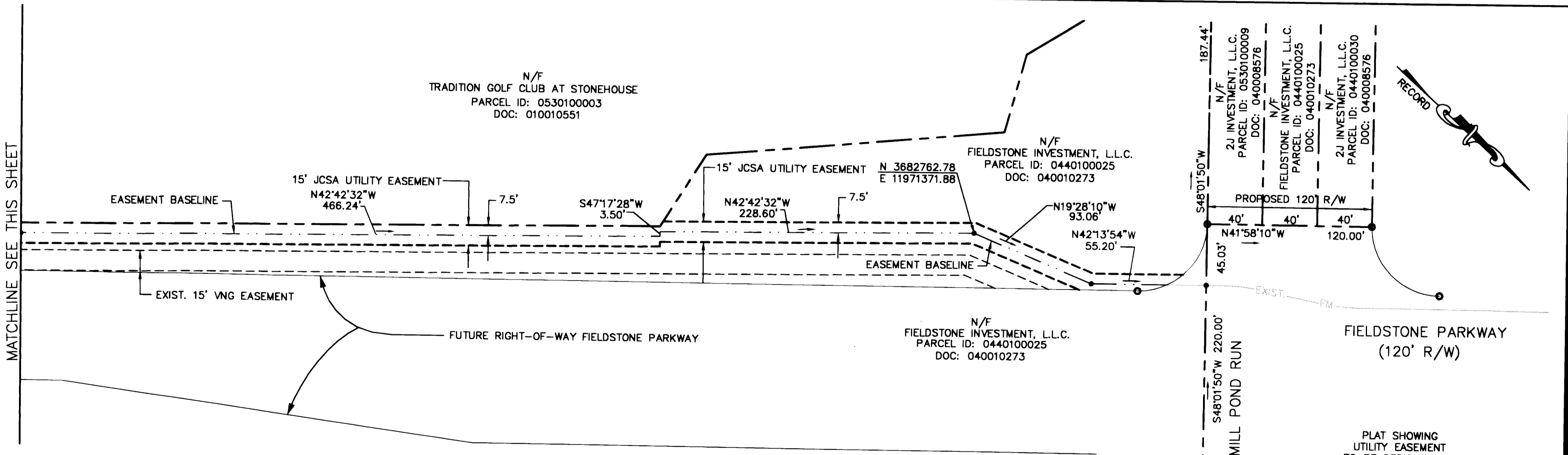
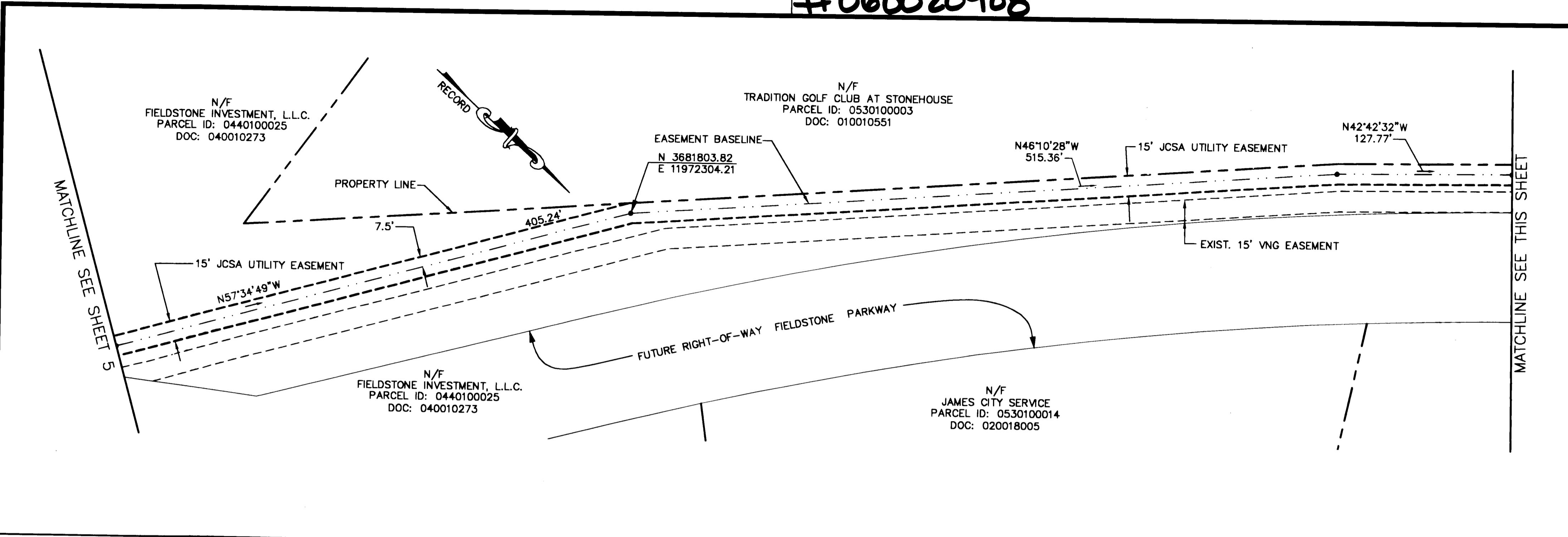
N06°55'48"W  
32.56'

N05°21'54"W  
44.42'

N08°15'40"W  
88.76'

N08°05'37"E

#060020908

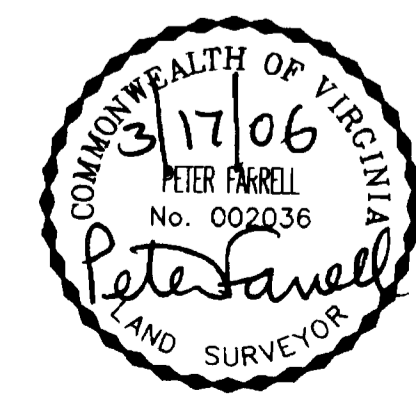
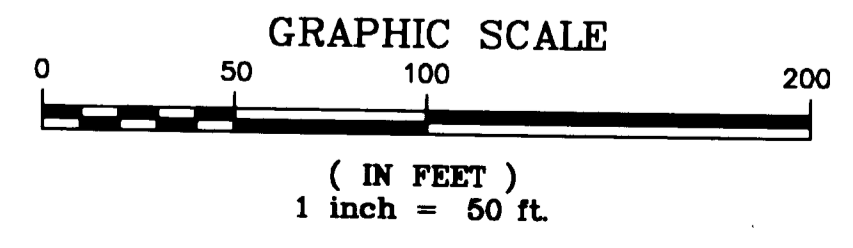


MATCHLINE SEE THIS SHEET

MATCHLINE SEE THIS SHEET

City of Williamsburg & County of James City  
Circuit Court. This PLAT was recorded on  
August 18, 2006  
at 12:25 AM/PM, PB \_\_\_\_\_ PG \_\_\_\_\_  
DOCUMENT # 060020908  
BETSY B. WOOLRIDGE, CLERK  
Betsy B. Woolridge Clerk

6 Large/Small Plat(s) Recorded  
herewith as # 060020908



PLAT SHOWING  
UTILITY EASEMENT  
TO BE DEDICATED TO  
JAMES CITY SERVICE AUTHORITY  
AT STONEHOUSE  
STONEHOUSE DISTRICT  
JAMES CITY COUNTY, VIRGINIA  
DATE: 3/17/06 SCALE 1"=50'  
SHEET 6 OF 6

**LANDMARK**  
DESIGN GROUP

Engineers • Planners • Surveyors  
Landscape Architects • Environmental Consultants

4029 Ironbound Road  
Suite 100  
Williamsburg, VA 23188  
Tel. (757) 253-2975  
Fax (757) 229-0049  
Email: lmdg@landmarkdg.com

DRAWN BY: CRO  
CHKD BY: DF

PROJ. NO.: 2002261-500.14  
DWG. NO.: 15301W