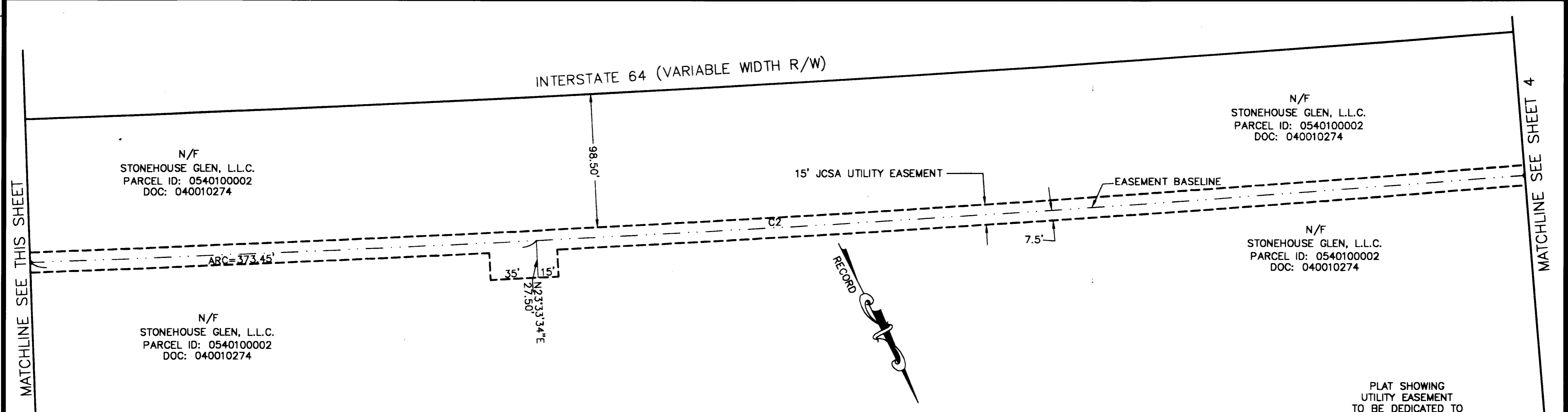
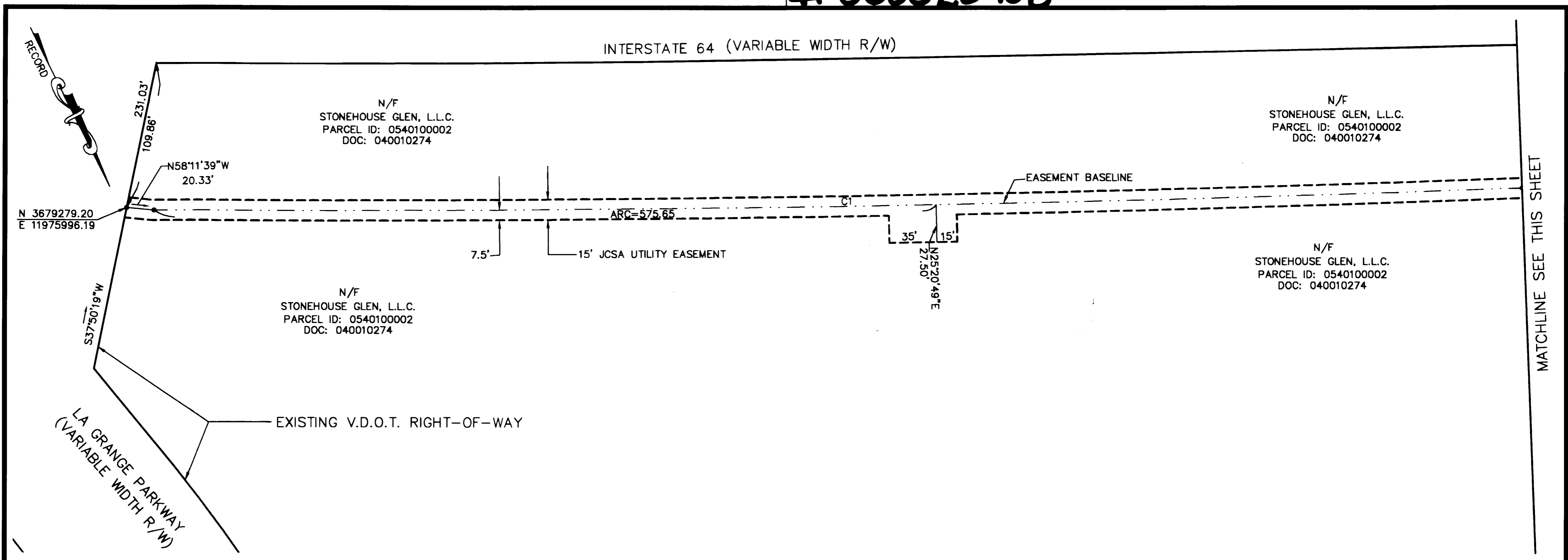
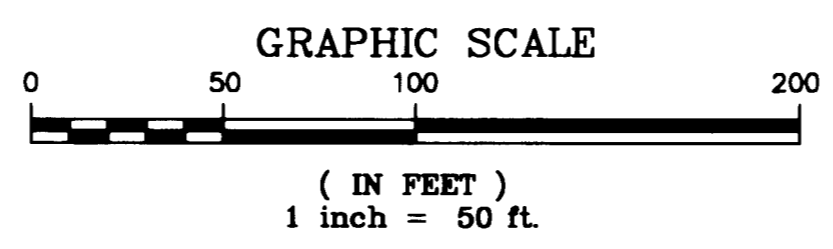


#060020908



City of Williamsburg & County of James City
 Circuit Court: This PLAT was recorded on
August 18, 2006
 at 12:25 AM/PM, PB _____ PG _____
 DOCUMENT # 060020908
 BETSY B. WOOLRIDGE, CLERK
Betsy B. Woolridge Clerk

6 Large/Small Plat(s) Recorded
 herewith as # 060020908



PLAT SHOWING
 UTILITY EASEMENT
 TO BE DEDICATED TO
 JAMES CITY SERVICE AUTHORITY
 AT STONEHOUSE
 STONEHOUSE DISTRICT
 JAMES CITY COUNTY, VIRGINIA
 DATE: 3/17/06 SCALE 1"=50'
 SHEET 3 OF 6

LANDMARK
 DESIGN GROUP
 Engineers • Planners • Surveyors
 Landscape Architects • Environmental Consultants

4029 Ironbound Road
 Suite 100
 Williamsburg, VA 23188
 Tel. (757) 253-2975
 Fax (757) 229-0049
 Email: lmdg@landmarkdg.com

DRAWN BY : CRO
 CHKD BY : PF
 PROJ. NO. : 2002261-500.14
 DWG. NO. : 16.394W