

#060020156

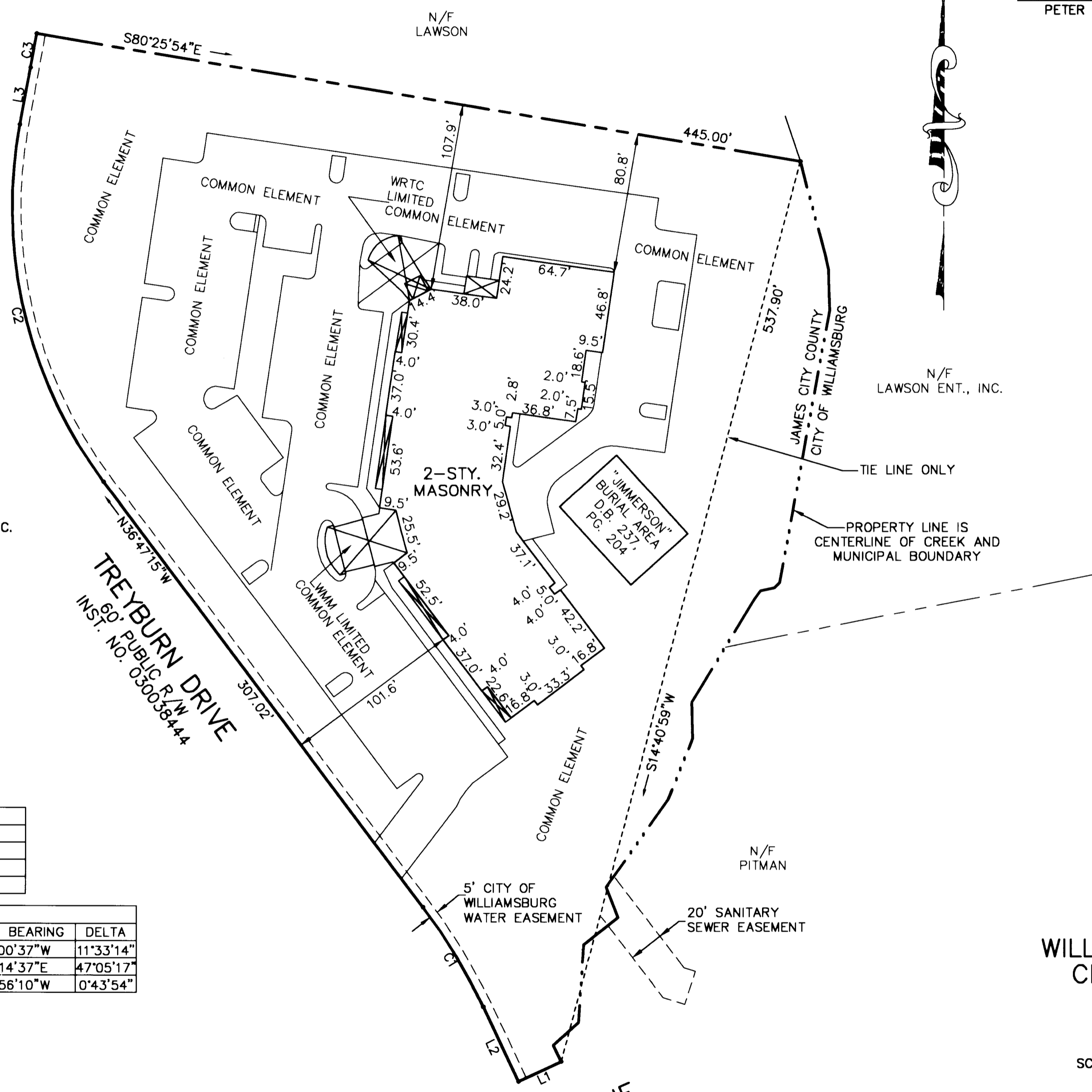
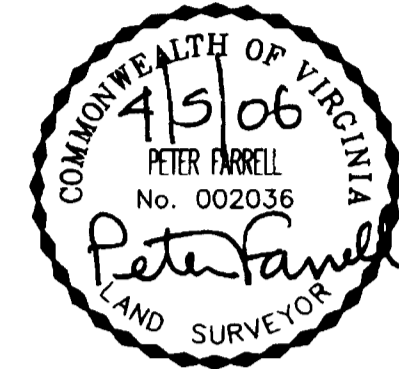
I CERTIFY THAT THIS PLAT IS ACCURATE AND COMPLIES WITH THE PROVISIONS OF SECTION 55-79.58(A) AND (B) OF THE CODE OF VIRGINIA AS AMENDED AND THAT ALL UNITS DEPICTED HEREON HAVE BEEN SUBSTANTIALLY COMPLETED.

Peter Farrell

4/5/06

PETER FARRELL, L.S.

DATE



REFERENCES:
P.B. 72, PG. 12-13
INST. NO. 030038443
INST. NO. 030038444

NOTES:
1. THESE PLATS AND PLANS ARE RECORDED SIMULTANEOUSLY WITH THE SECOND AMENDMENT TO THE CONDOMINIUM DECLARATION OF WILLIAMSBURG PHYSICIANS' CENTER CONDOMINIUM.
2. TOTAL AREA OF PROPERTY = 170,335 S.F., 3.9± AC.

LINE TABLE		
LINE	LENGTH	BEARING
L1	27.04'	S64°46'00"W
L2	47.78'	N25°14'00"W
L3	33.70'	N10°18'00"E

CURVE TABLE						
CURVE	LENGTH	RADIUS	TANGENT	CHORD	CHORD BEARING	DELTA
C1	67.56'	335.00'	33.89'	67.44'	N31°00'37"W	11°33'14"
C2	217.79'	265.00'	115.47'	211.71'	S13°14'37"E	47°05'17"
C3	20.00'	1565.96'	10.00'	20.00'	S09°56'10"W	0°43'54"

GRAPHIC SCALE



(IN FEET)
1 inch = 50 ft.

2 Large/Small Plat(s) Recorded herewith as # 060020156

UPDATED PLAT OF
WILLIAMSBURG PHYSICIANS' CENTER CONDOMINIUM

JAMES CITY COUNTY, VIRGINIA

SCALE: 1"=50' DATE: APRIL 5, 2006

SHEET 1 OF 2

MONTICELLO AVENUE
VARIABLE R/W

City of Williamsburg & County of James City
Circuit Court: This PLAT was recorded on
11 August 2006
at 3:03 AM P.M. PB — PG —
DOCUMENT # 060020156
BETSY B. WOOLRIDGE, CLERK
Betsy B. Woolridge Clerk

LANDMARK DESIGN GROUP
Engineers • Planners • Surveyors
Landscape Architects • Environmental Consultants

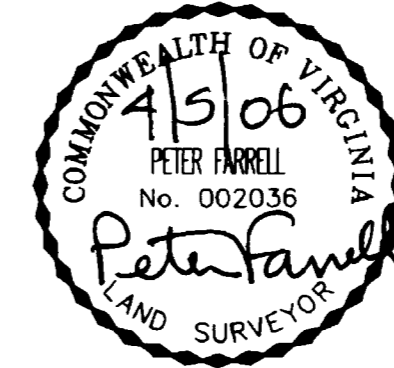
4029 Ironbound Road
Suite 100
Williamsburg, VA 23188
Tel. (757) 253-2975
Fax (757) 229-0049
Email: lmdg@landmarkdg.com

5544 Greenwich Road
Suite 200
Virginia Beach, VA 23462
Tel. (757) 473-2000
Fax (757) 497-7933
Email: lmdg@landmarkdg.com

DRAWN BY : PF
CHKD. BY : SAR

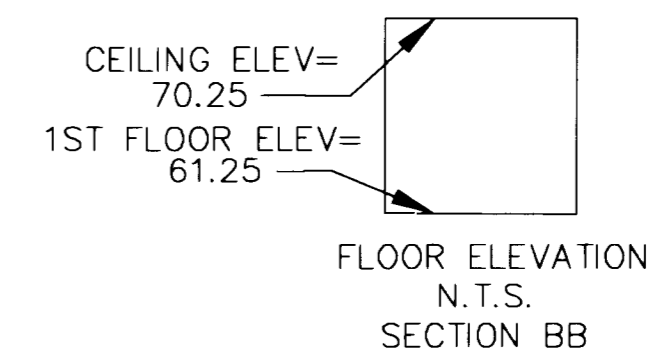
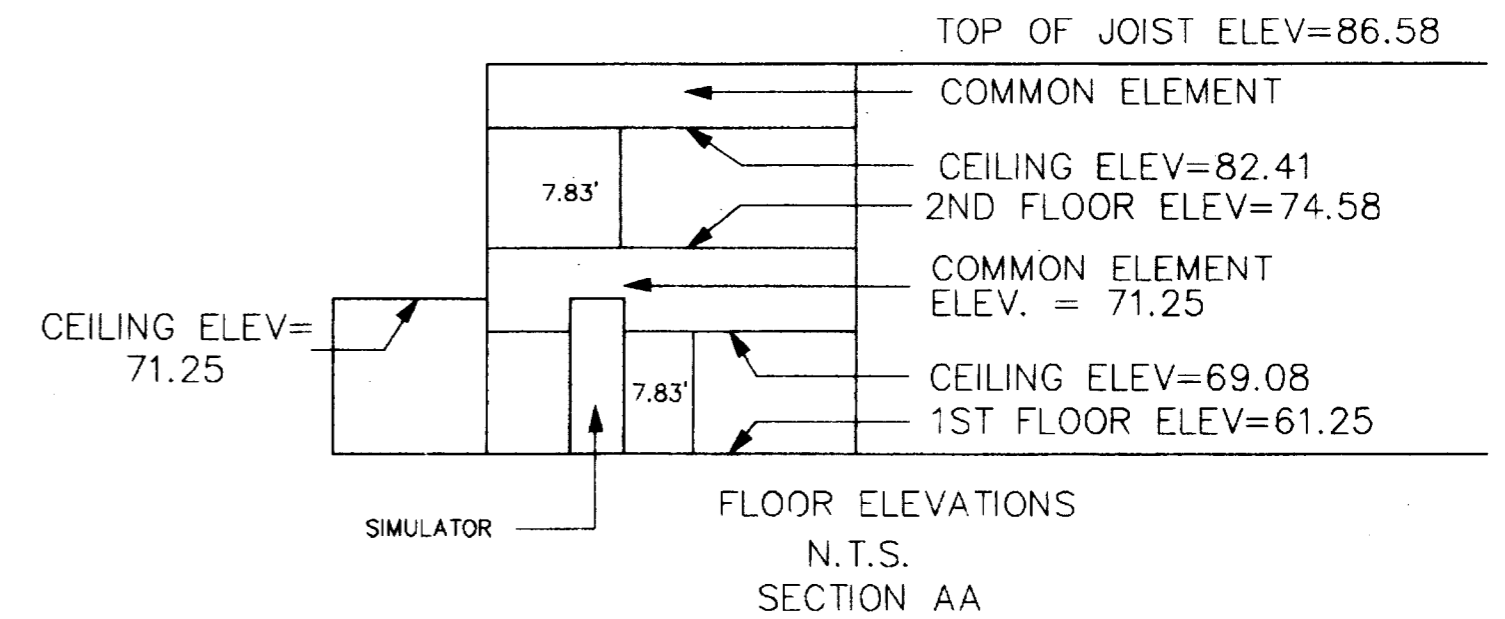
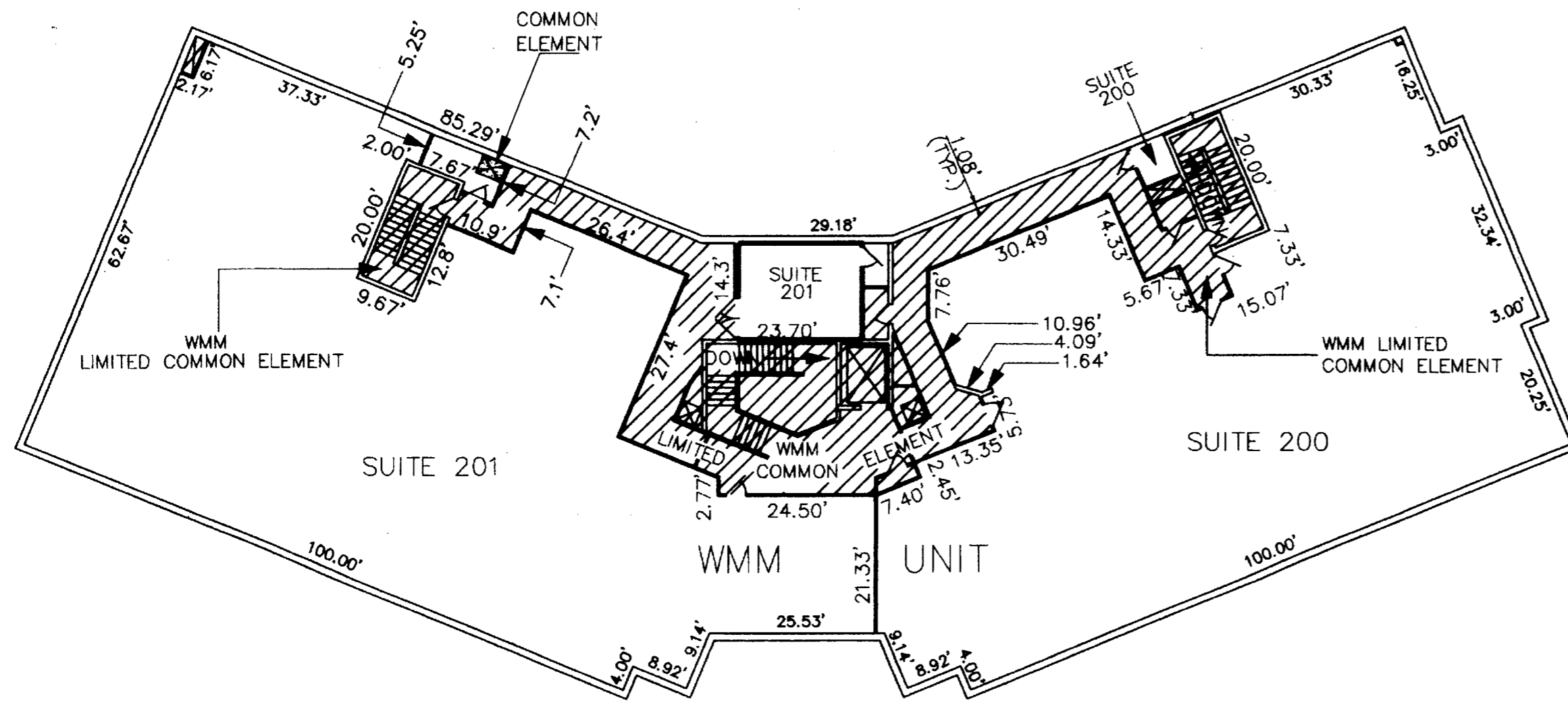
PROJ. NO. : 1940025-200.00
DWG. NO. : 16164W

#060020156



I CERTIFY THAT THIS PLAT IS ACCURATE AND COMPLIES WITH THE PROVISIONS OF SECTION 55-79.58(A) AND (B) OF THE CODE OF VIRGINIA AS AMENDED AND THAT ALL UNITS DEPICTED HEREON HAVE BEEN SUBSTANTIALLY COMPLETED.

Peter Farrell 4/5/06
PETER FARRELL, L.S. DATE



WMM UNIT

SUITE SQUARE FOOTAGE

SUITE 100	6266 sq.ft.
SUITE 101	2510 sq.ft.
SUITE 200	5983 sq.ft.
SUITE 201	6891 sq.ft.
WMM LIMITED COMMON ELEMENT	4,176 sq.ft.

WRTC UNIT

8,600 sq. ft.

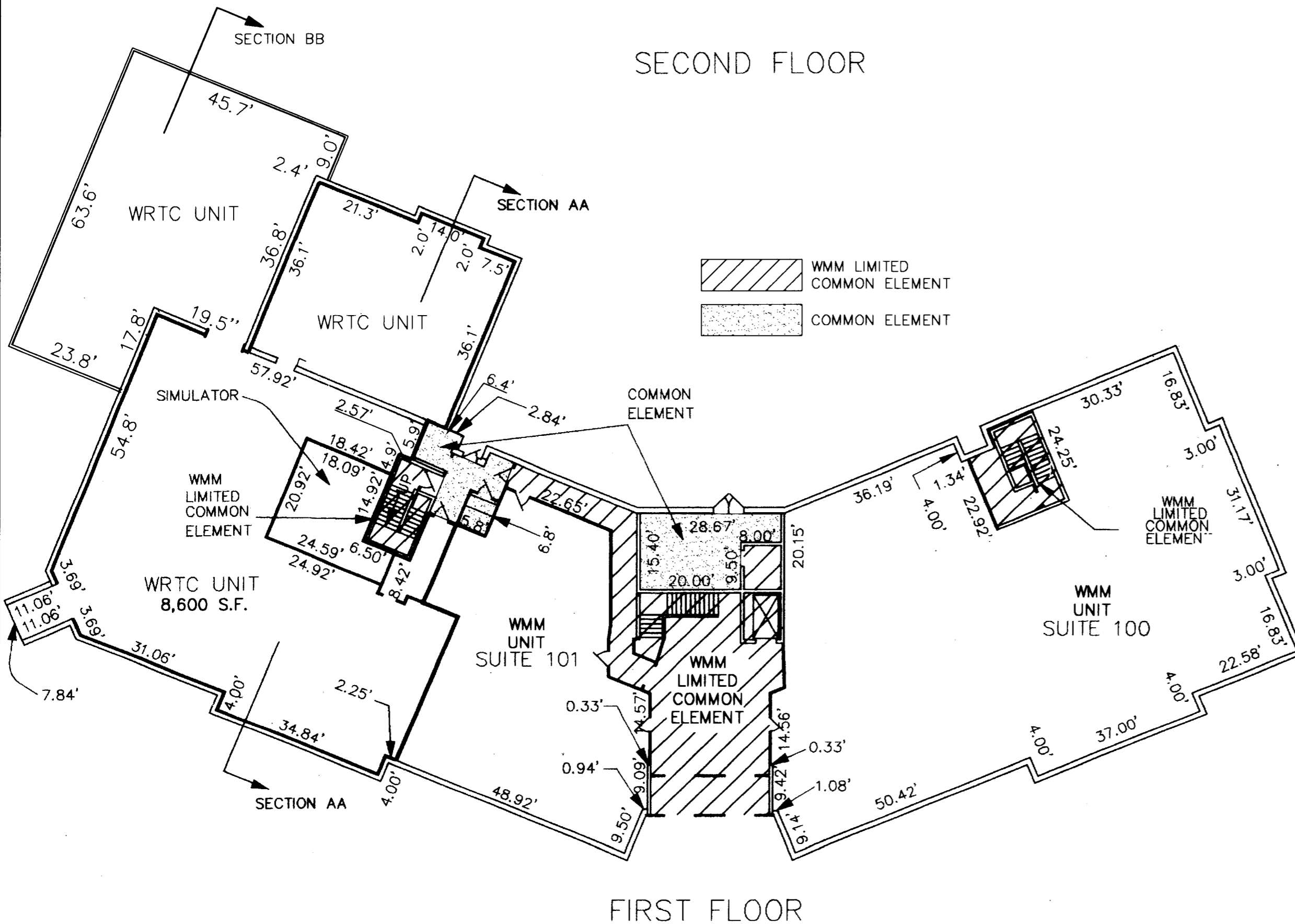
2 Large/Small Plat(s) Recorded herewith as # 060020156

UPDATED PLAT OF WILLIAMSBURG PHYSICIANS' CENTER CONDOMINIUM

JAMES CITY COUNTY, VIRGINIA

SCALE: 1"=50' DATE: APRIL 5, 2006

SHEET 2 OF 2



City of Williamsburg & County of James City Circuit Court: This PLAT was recorded on 11 August 2006 at 3:03 AM/PM, PG. — DOCUMENT # 060020156 BETSY B. WOOLRIDGE, CLERK Betsy B. Woolridge Clerk

LANDMARK DESIGN GROUP
Engineers • Planners • Surveyors
Landscape Architects • Environmental Consultants

4029 Ironbound Road Suite 100 Williamsburg, VA 23188 Tel. (757) 253-2975 Fax (757) 229-0049 Email: lmdg@landmarkdg.com
5544 Greenwich Road Suite 200 Virginia Beach, VA 23462 Tel. (757) 473-2000 Fax (757) 497-7933 Email: lmdg@landmarkdg.com