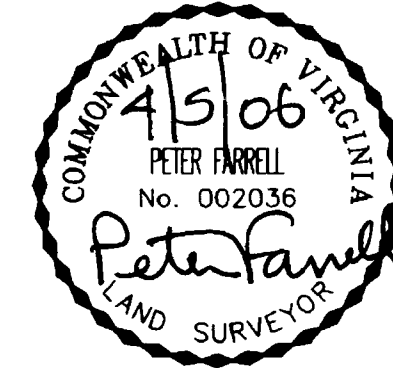
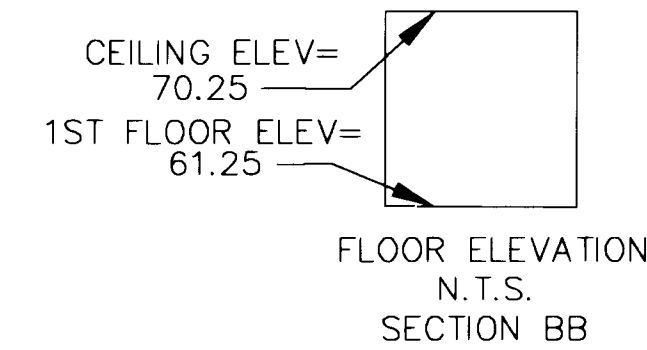
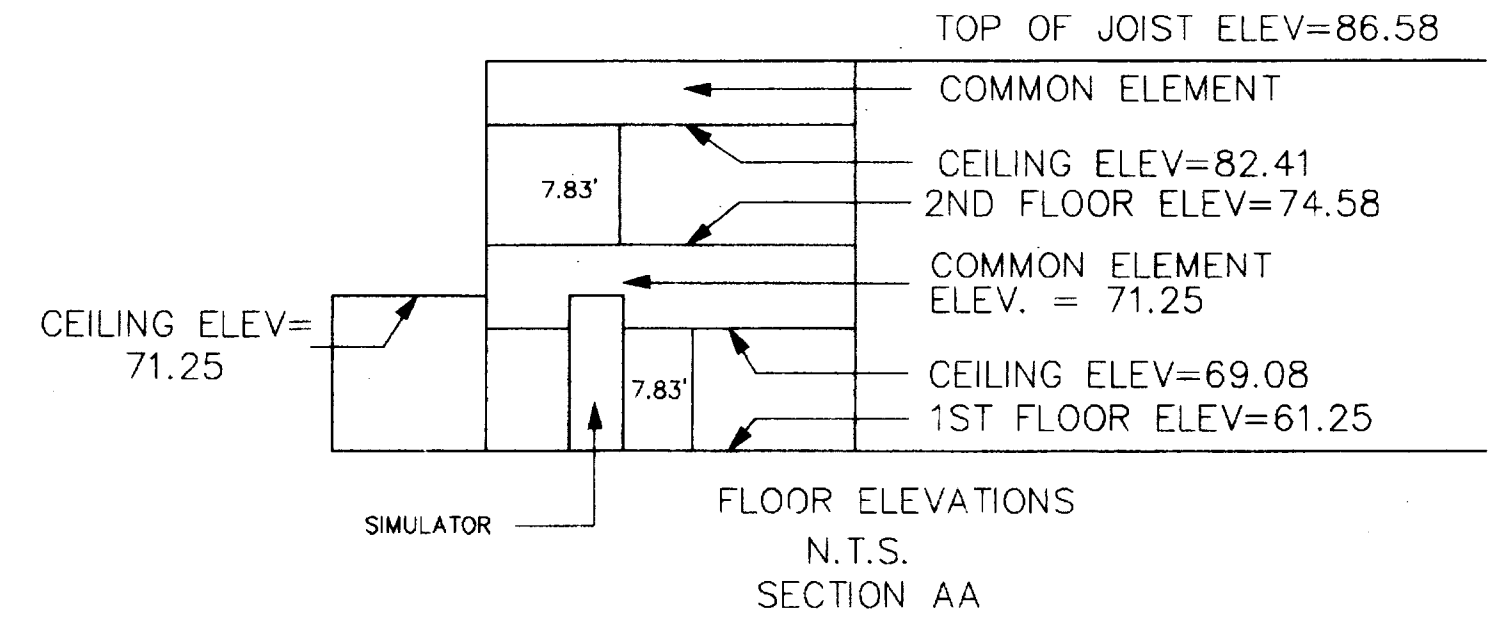
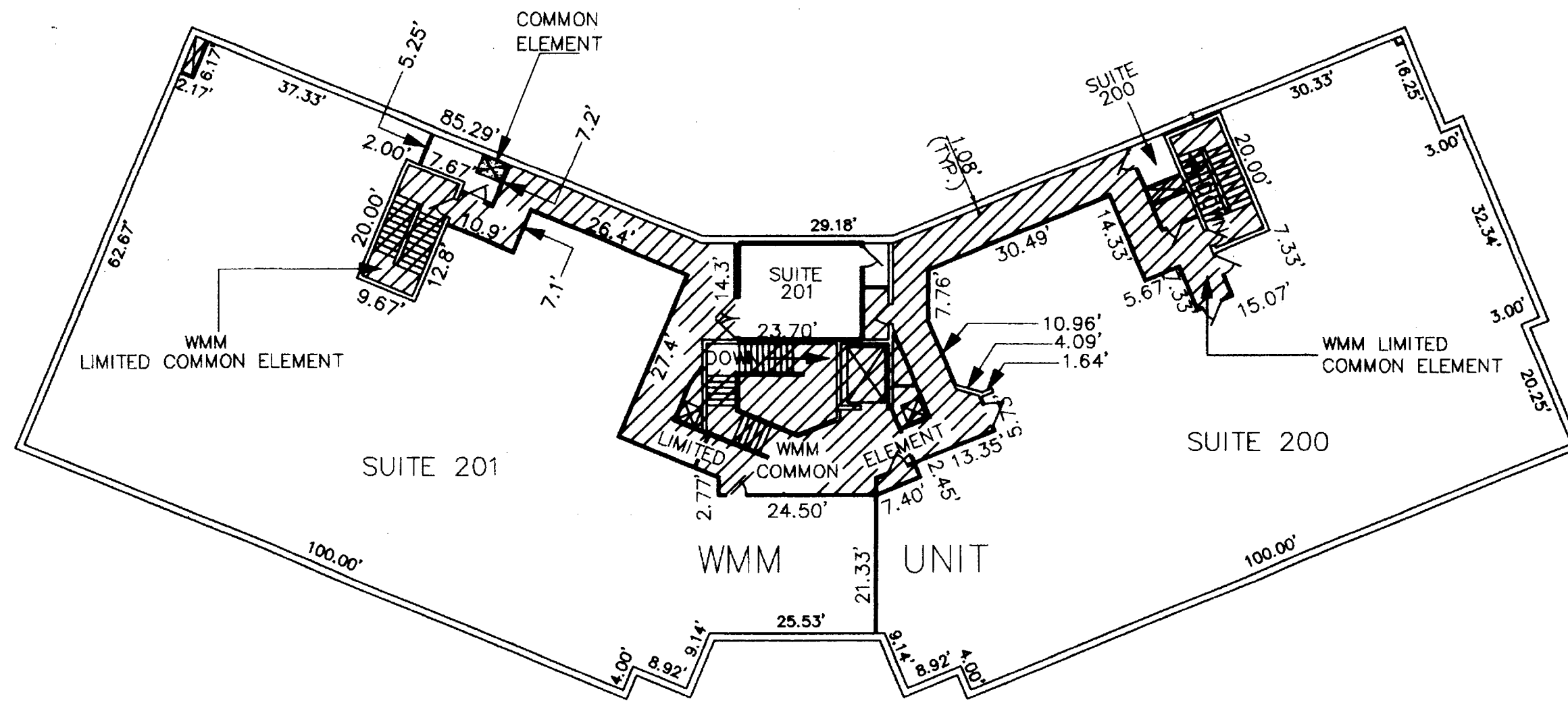


#060020156



I CERTIFY THAT THIS PLAT IS ACCURATE AND COMPLIES WITH THE PROVISIONS OF SECTION 55-79.58(A) AND (B) OF THE CODE OF VIRGINIA AS AMENDED AND THAT ALL UNITS DEPICTED HEREON HAVE BEEN SUBSTANTIALLY COMPLETED.

Peter Farrell 4/5/06
PETER FARRELL, L.S. DATE



SECOND FLOOR

WMM UNIT

SUITE SQUARE FOOTAGE

| | |
|----------------------------|--------------|
| SUITE 100 | 6266 sq.ft. |
| SUITE 101 | 2510 sq.ft. |
| SUITE 200 | 5983 sq.ft. |
| SUITE 201 | 6891 sq.ft. |
| WMM LIMITED COMMON ELEMENT | 4,176 sq.ft. |

WRTC UNIT

8,600 sq. ft.

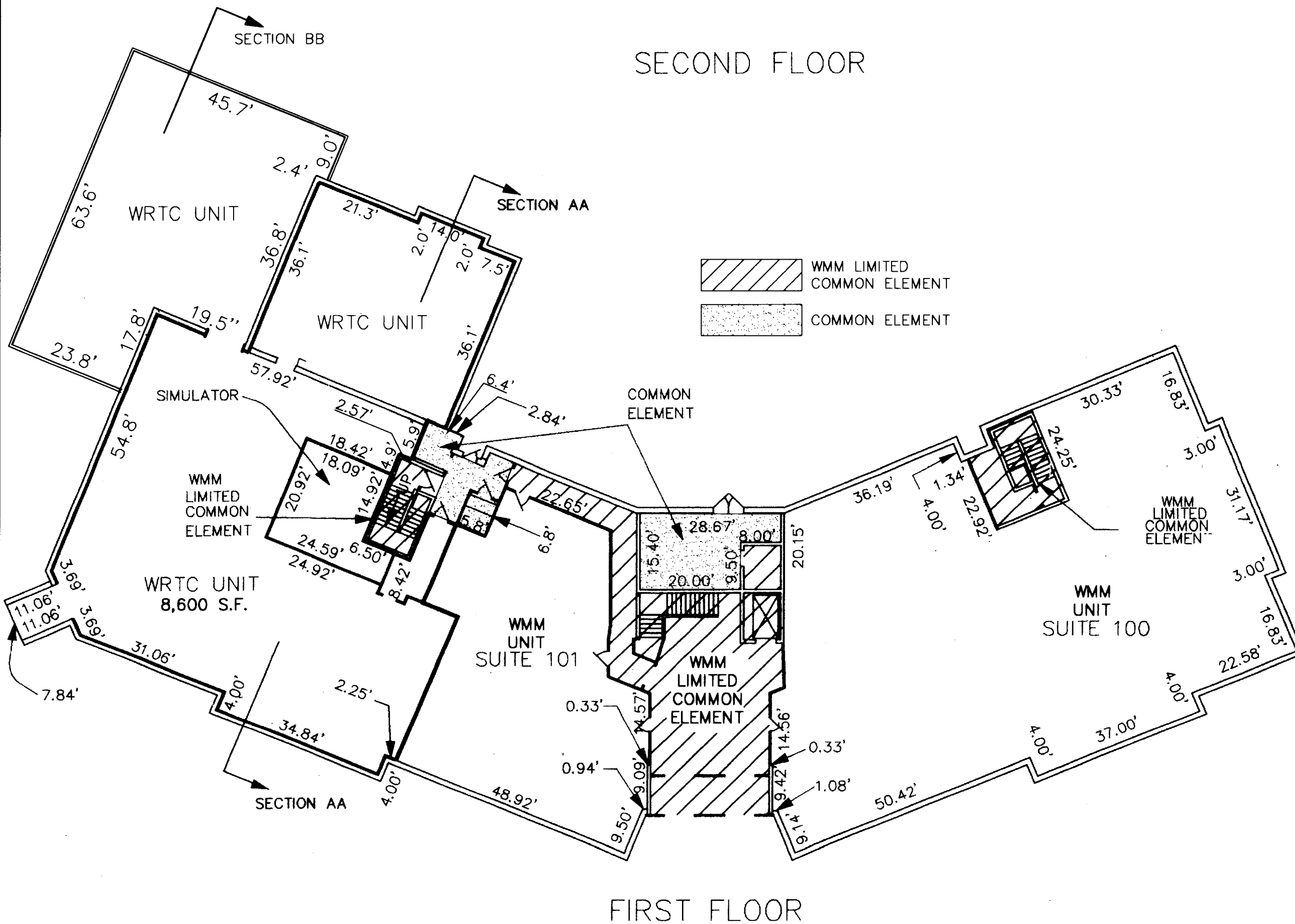
2 Large/Small Plat(s) Recorded herewith as # 060020156

UPDATED PLAT OF WILLIAMSBURG PHYSICIANS' CENTER CONDOMINIUM

JAMES CITY COUNTY, VIRGINIA

SCALE: 1"=50' DATE: APRIL 5, 2006

SHEET 2 OF 2



FIRST FLOOR

City of Williamsburg & County of James City Circuit Court: This PLAT was recorded on 11 August 2006 at 3:03 AM/PM, PG. — DOCUMENT # 060020156 BETSY B. WOOLRIDGE, CLERK Betsy B. Woolridge Clerk

LANDMARK DESIGN GROUP
Engineers • Planners • Surveyors
Landscape Architects • Environmental Consultants

4029 Ironbound Road Suite 100 Williamsburg, VA 23188 Tel. (757) 253-2975 Fax (757) 229-0049 Email: lmdg@landmarkdg.com
5544 Greenwich Road Suite 200 Virginia Beach, VA 23462 Tel. (757) 473-2000 Fax (757) 497-7933 Email: lmdg@landmarkdg.com