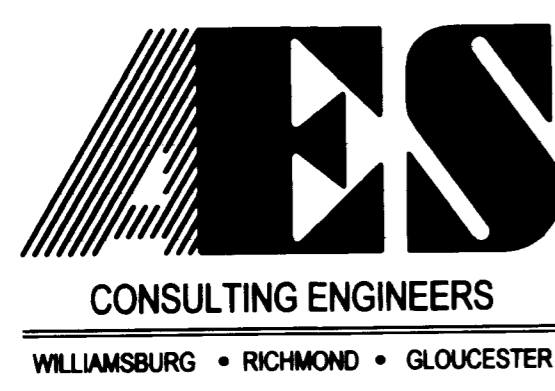
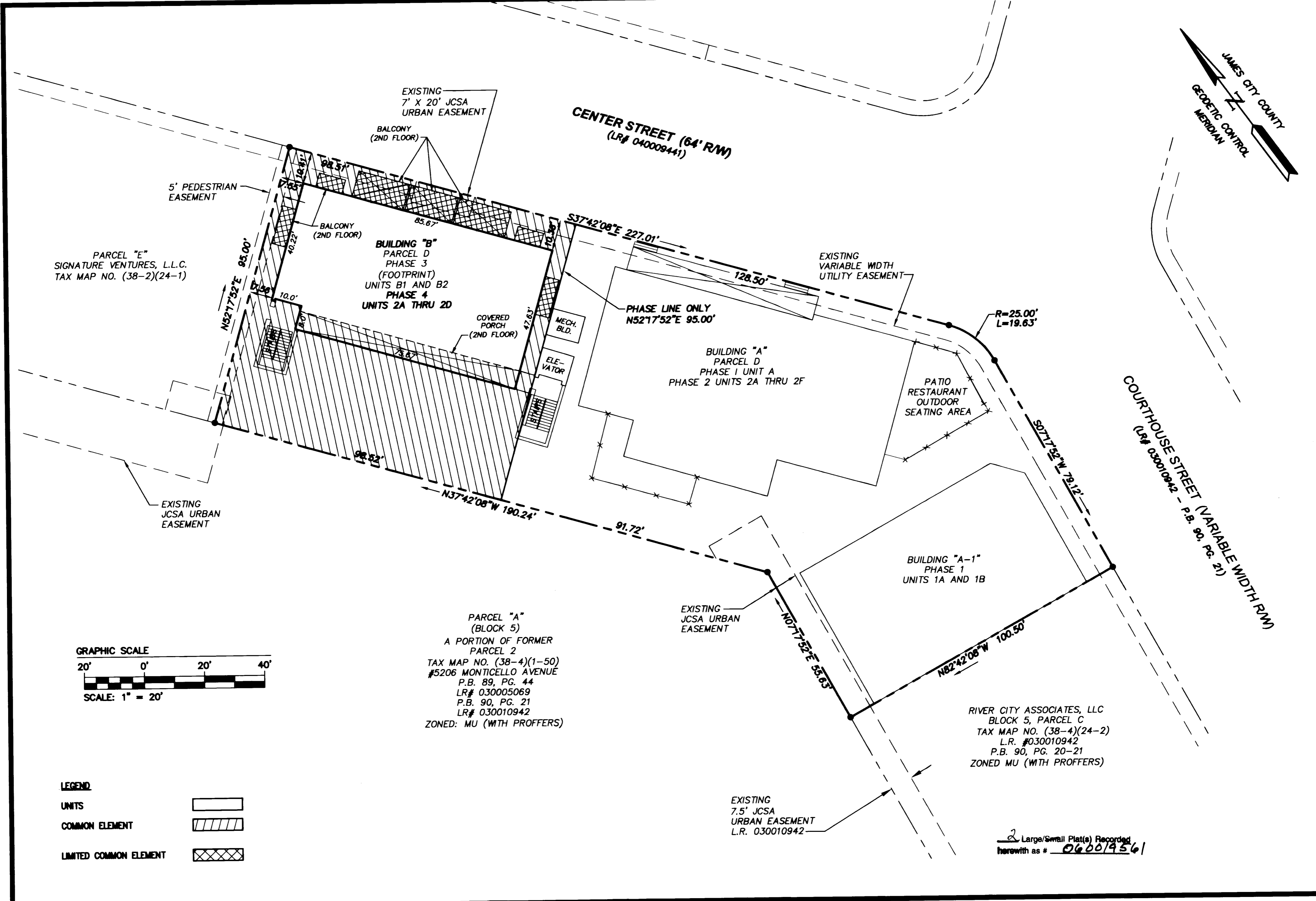
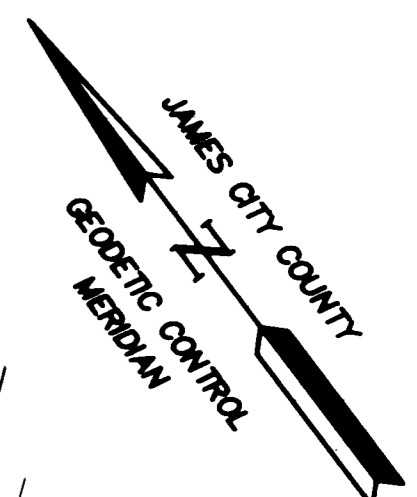


#060019561



5248 Olde Towne Road, Suite 1  
Williamsburg, Virginia 23188  
(757) 253-0040  
Fax (757) 220-8994

**EXHIBIT B**  
**PLAT OF CONDOMINIUM**  
**NEW TOWN CENTER STREET CONDOMINIUMS**  
**PHASE 4**  
**BUILDING "B"**  
**UNITS 2A THRU 2D**  
BERKELEY DISTRICT JAMES CITY COUNTY VIRGINIA



No.	DATE	REVISION / COMMENT / NOTE	BY

Designed AES	Drawn AES/CMA
Scale 1"=20'	Date 8/7/06
Project No. 6632-E-10-3	
Drawing No. 2 OF 2	

City of Williamsburg & County of James City  
Circuit Court: This PLAT was recorded on  
8 August 2008  
at 11:34 AM/PM/PB PG. 1  
DOCUMENT # 060019561  
BETSY B. WOOLRIDGE, CLERK  
Betsy B. Woolridge Clerk