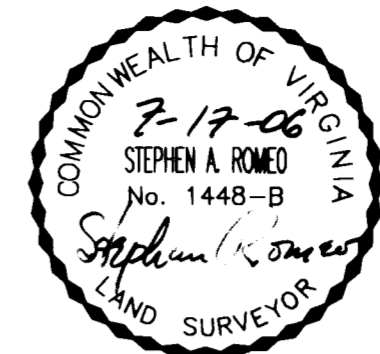
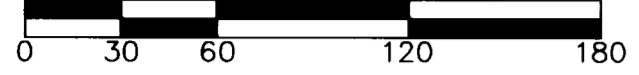


#060018285

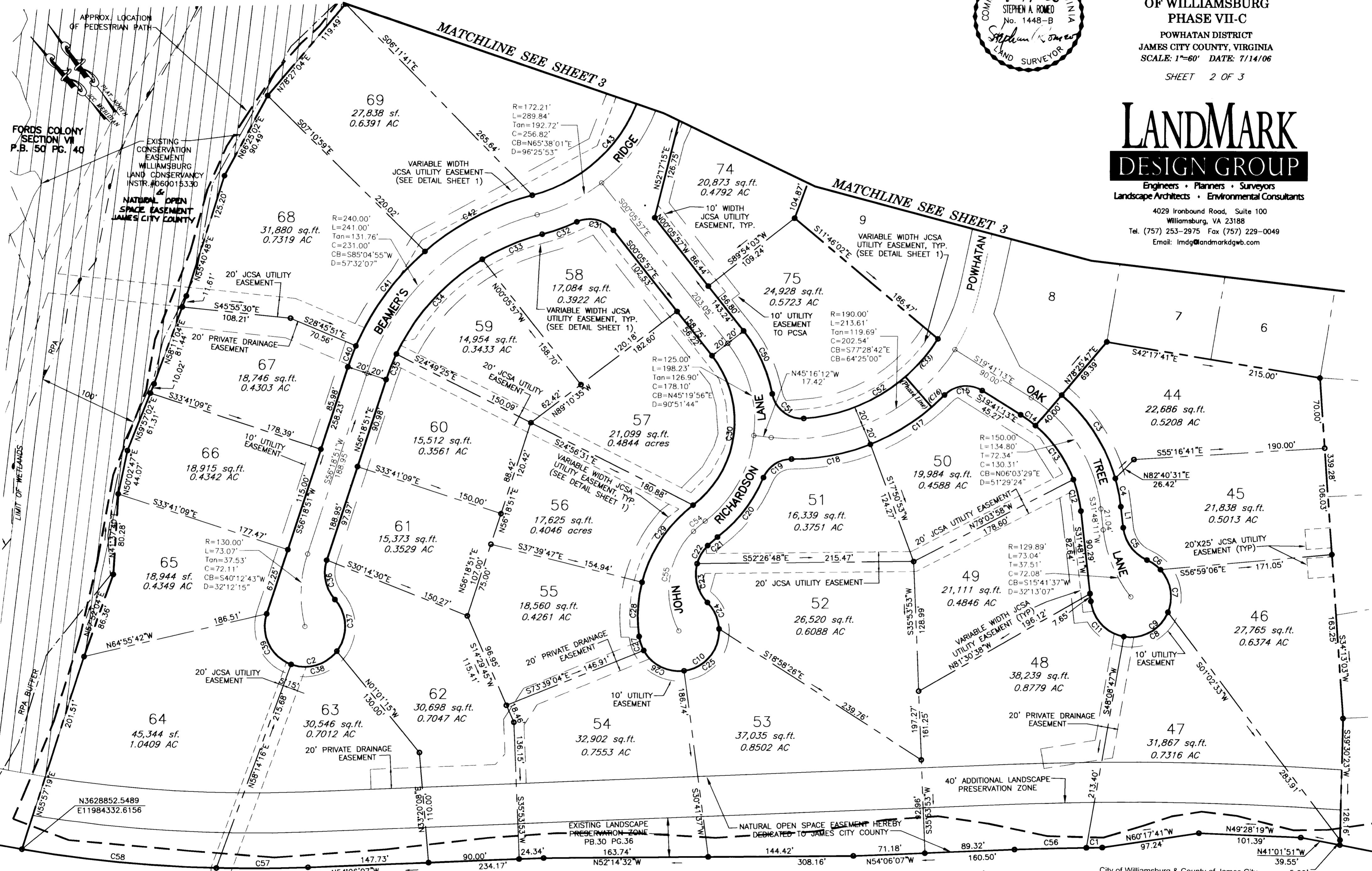
PLAN SCALE: 1"=60'
GRAPHIC SCALE IN FEET



**SUBDIVISION OF
POWHATAN SECONDARY
OF WILLIAMSBURG
PHASE VII-C**
POWHATAN DISTRICT
JAMES CITY COUNTY, VIRGINIA
SCALE: 1"=60' DATE: 7/14/06
SHEET 2 OF 3

LANDMARK DESIGN GROUP

Engineers • Planners • Surveyors
Landscape Architects • Environmental Consultants
4029 Ironbound Road, Suite 100
Williamsburg, VA 23188
Tel. (757) 253-2975 Fax (757) 229-0049
Email: lmdg@landmarkdgb.com



NEWS ROAD S.R. 613 VAR. WIDTH R/W

City of Williamsburg & County of James City
Circuit Court: This PLAT was recorded on
27 July 2006
at 9:39 AM/PM PB PG
DOCUMENT # 060018285
BETSY B. WOOLRIDGE, CLERK
Betsy B. Woolridge Clerk

3 Large/Small Plat(s) Recorded
herewith as # 060018285

DRAWN BY: LFW PROJ. NO.: 1980232-000.57
CHKD. BY: SAR DWG. NO.: 163.36W